

Purpose

All musicians know that learning to sing or play an instrument at an advanced level takes years of practice, assessment, and feedback. This is no less true for conducting, but most university programs cannot offer more than two conducting classes for undergraduates.

The purpose of the Minnesota Area Conducting Workshop is to provide music educators, community ensemble directors and church musicians with a forum in which they can practice their conducting skills, receive feedback from trained conductors, practice self-evaluation skills, discuss issues in music education, and network with other music educators in a musical and supportive environment.

Workshop Features

- Choral and instrumental conducting focuses in the same location
- Daily conducting opportunities with advanced ensembles
- High quality selections for middle school and high school ensembles
- Video taped conducting sessions
- Feedback and networking time with music educators from area colleges
- Time and resources for peer evaluations of conducting sessions
- Sessions on specific issues in conducting and music education (topics requested by the participants)
- Focus on both gestural proficiency and rehearsal pedagogy as well as score-study and preparation

Lodging

Southwest Minnesota State University Residential Life offers accommodations in the Foundation Resident Apartments for workshop participants. The apartments are located adjacent to the main campus. Units contain up to three bedrooms with a common gathering area. Workshop participants may use these facilities at a cost of \$30.00 per day per person. Please note that availability is limited. Contact Jessica Bentley at (507) 537-6460 to reserve space in the apartments.

In addition, two hotels are located within easy walking distance of campus:

- **EverSpring Inn & Suites** (507) 532-3221
- **Quality Inn** (507) 532-3070

Two additional hotels are a short distance from campus:

- **AmericInn** (507) 537-9424
- **Sleep Inn** (507) 337-0103

Contact

For more information on the Minnesota Area Conducting Workshop, contact:

Dr. John Ginocchio
(507) 537-7209
John.Ginocchio@SMSU.edu

Dr. Stephen Kingsbury
(507) 537-7247
Stephen.Kingsbury@SMSU.edu



www.SMSU.edu/go/music

ADA/Section 504: Individuals with a disability who need a reasonable accommodation to participate should call SMSU at 1-800-642-0684 or through the Minnesota Relay Service at 1-800-627-3529.

2024 Minnesota Area CONDUCTING WORKSHOP



FREE OF CHARGE

Application Deadline:
MAY 31, 2024

Choral & Instrumental
June 24-26, 2024



Clinicians



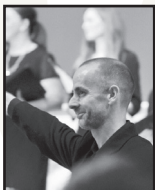
Dr. John Ginocchio
Director of Bands
Southwest Minnesota State University



Dr. Stephen Kingsbury
Director of Choral Activities
Southwest Minnesota State University



Dr. Mark Whitlock
Director of Bands
University of Minnesota, Duluth



Dr. Timothy Campbell
Associate Professor (Choirs)
University of South Dakota

Daily Schedule

8:00-11:30am	Conducting Session with Lab Ensembles
11:30am-1:00pm	Lunch (on your own)
1:00-2:30pm	Interest Session (Choral Track)
1:00-2:00pm	Peer Evaluations (Instrumental Track)
2:00-3:30pm	Interest Session (Instrumental Track)
2:30-3:30pm	Peer Evaluations (Choral Track)
3:30-3:45pm	Break
3:45-4:45pm	Combined Sessions

Evening activities will be planned for those who are interested. Schedule is subject to change.

Musical Selections

Lists of specific pieces for both choir and concert band will be compiled and distributed to participants around the middle of May. Conductors will select and prepare three pieces from one list to conduct with the Lab Ensemble. Pieces will range in difficulty from grade 1 to grade 4 so conductors can select pieces that may be appropriate for their own ensembles.

Professional Development

All participants will receive a certificate documenting professional development hours. For participants interested in receiving graduate credit, the workshop is now available for workshop credits at the rate of \$150 per credit. Contact Dr. Ginocchio for more information.

Participant Limits

All pre-service and in-service conductors are invited to attend the workshop; however, conducting participants will be limited to 15 instrumental and 15 choral conductors. Additional conductors are welcome to attend, observe, and/or participate in all activities.

Application

Application Deadline: May 31, 2024

Name _____

Address _____

City _____ State _____ Zip _____

Home Phone (_____) _____

Work Phone (_____) _____

Email _____

Current Employment _____

Years of Teaching Experience _____

Desired Workshop Focus:

- Choral Conducting
- Instrumental Conducting
- Instrumental & Choral (split by day)

Instrument(s) Played/Voice:

1. _____
2. _____

Suggested session topics:

Detach this form and mail to:

Minnesota Area Conducting Workshop
c/o Dr. John Ginocchio
Southwest Minnesota State University
1501 State Street
Marshall, MN 56258

2024 Minnesota Area CONDUCTING WORKSHOP