

SOUTHWEST MINNESOTA STATE UNIVERSITY

Civic Engagement Survey 2017

Analysis of data collected July 1, 2016 through June 30, 2017



Table of Contents

Background	2
Section I: General Information	3
Section II: SMSU Experience	13
Section III: Civic Minded Graduate Scale	24
CMG Subscale Scores	55
Knowledge Subscale	56
Skills Subscale	58
Dispositions Subscale	60
Behavioral Intentions Subscale	62
Section IV: Responsibility and Commitment	64
Responsibility and Commitment Comments	67
General Comments	82
Further Statistical Analysis	85
Reliability	86
Subscale Correlations	86
Cross-tabulations and Chi Squares	87
One-way ANOVAs	92
Appendix	104

Background

Civic engagement is an integral part of the Southwest Minnesota State University (SMSU) mission statement and a priority area in university strategic planning. Student involvement in civic-related activities is promoted by the campus Liberal Education Program, student clubs and organizations, academic departments and programs, and through a wide variety of course-related service-learning opportunities. Assessment of civic engagement on the SMSU campus is performed using the Civic Engagement Survey.

The Civic Engagement Survey was developed during the spring 2008 semester by SMSU faculty and staff and initially deployed as an online survey in April 2008. Graduating seniors are directed to complete this survey as part of their graduation requirements. Items on the survey measure students' demographics, their participation in volunteerism and other civic-oriented activities sponsored by SMSU, as well as their "civic-mindedness". Civic-mindedness is measured using the Civic Minded Graduate (CMG) Scale, adopted from the Center for Service and Learning at Indiana University – Purdue University at Indianapolis (IUPUI).

Data collected from spring 2008 and summer 2008 graduates (n=168) was reported in a poster presentation at the 2008 SMSU Undergraduate Research Conference and subsequently in a presentation at the 2009 SMSU Strategic Planning Day. For subsequent academic years, the data have been compiled and reported in a series of Civic Engagement Survey documents. Copies of all data files and report documents are maintained by the SMSU Center for Civic Engagement.

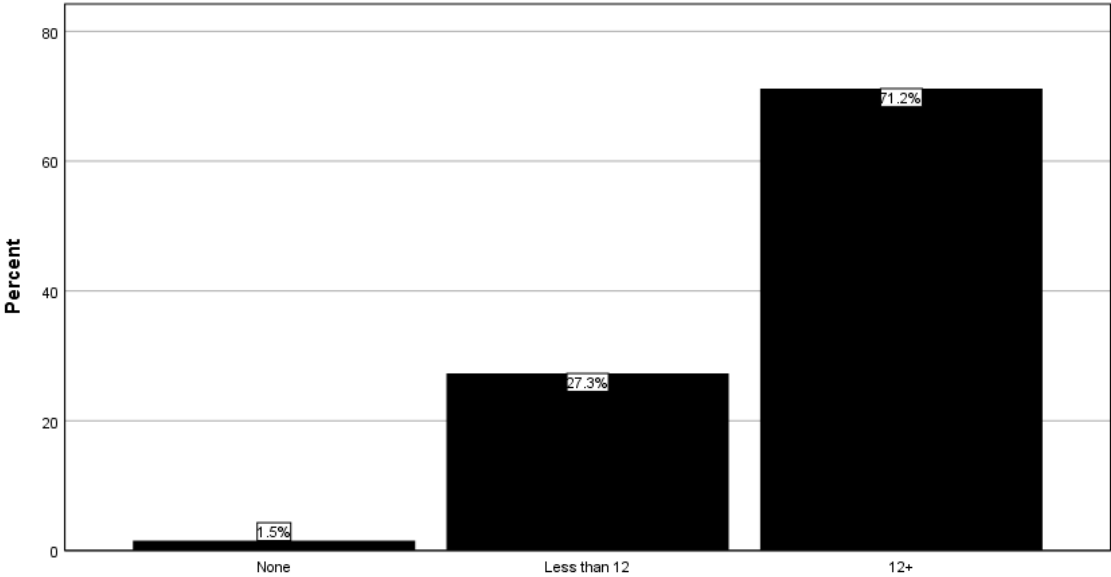
The present report summarizes data collected between July 1, 2016 and June 30, 2017. A total of 460 students completed the survey during this time period. In addition, this report includes trend analysis data for the last eight academic years: 2009-2010, 2010-2011, 2011-2012, 2012-2013, 2013-2014, 2014-2015, 2015-2016, and 2016-2017. Data collected prior to the 2009-2010 academic year were not included in the trend analysis because they were obtained using a previous version of the Civic Engagement Survey, which utilized significantly different response categories for many of the items. A copy of the current Civic Engagement Survey instrument can be found in the Appendix.

Section I: General Information

Section I of the Civic Engagement Survey asks students to report various demographic characteristics. Data collected for each survey item are presented on a separate page in this section. A summary table is presented at the end of the section providing a review of the demographic characteristics for the past eight academic years.

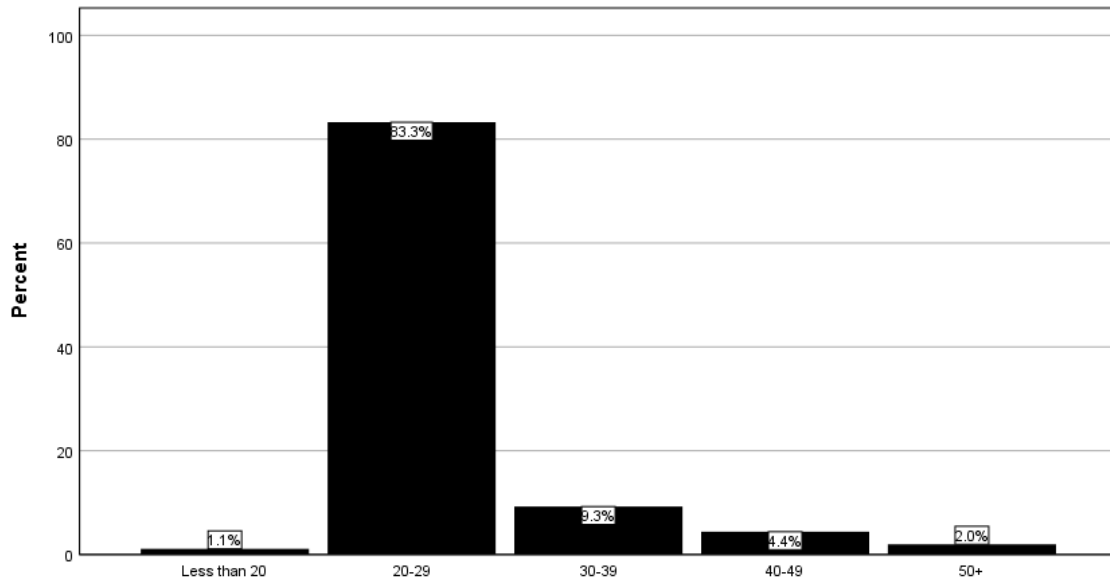
Current number of credit hours enrolled

		Frequency	Percent	Valid Percent
Valid	None	7	1.5	1.5
	Less than 12	125	27.2	27.3
	12+	326	70.9	71.2
	Total	458	99.6	100.0
Missing		2	.4	
Total		460	100.0	



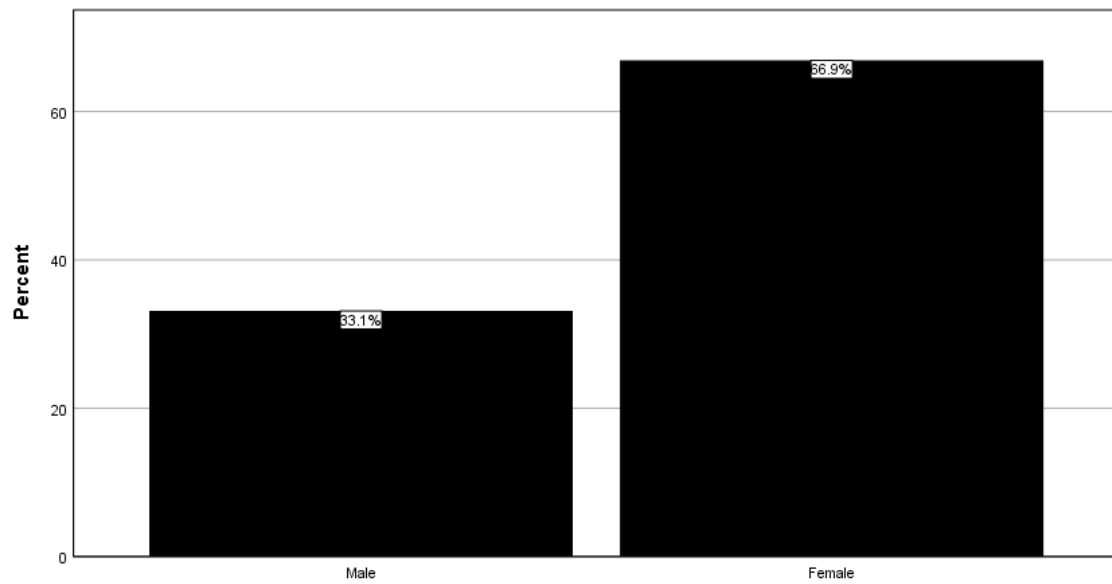
Age

		Frequency	Percent	Valid Percent
Valid	Less than 20	5	1.1	1.1
	20-29	378	82.2	83.3
	30-39	42	9.1	9.3
	40-49	20	4.3	4.4
	50+	9	2.0	2.0
	Total	454	98.7	100.0
Missing		6	1.3	
Total		460	100.0	



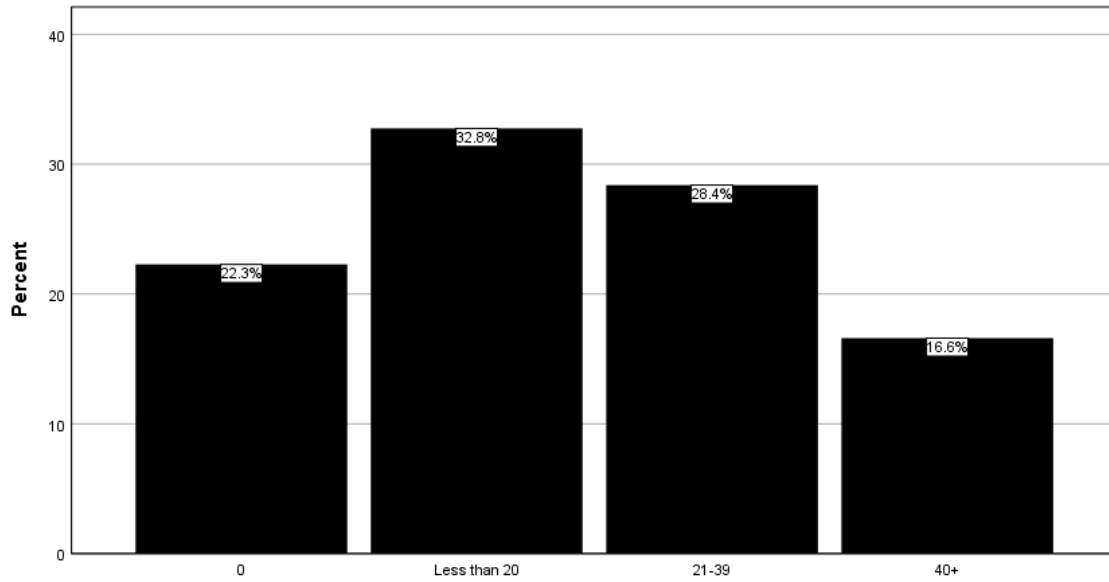
Gender

		Frequency	Percent	Valid Percent
Valid	Male	151	32.8	33.1
	Female	305	66.3	66.9
	Total	456	99.1	100.0
Missing		4	.9	
Total		460	100.0	



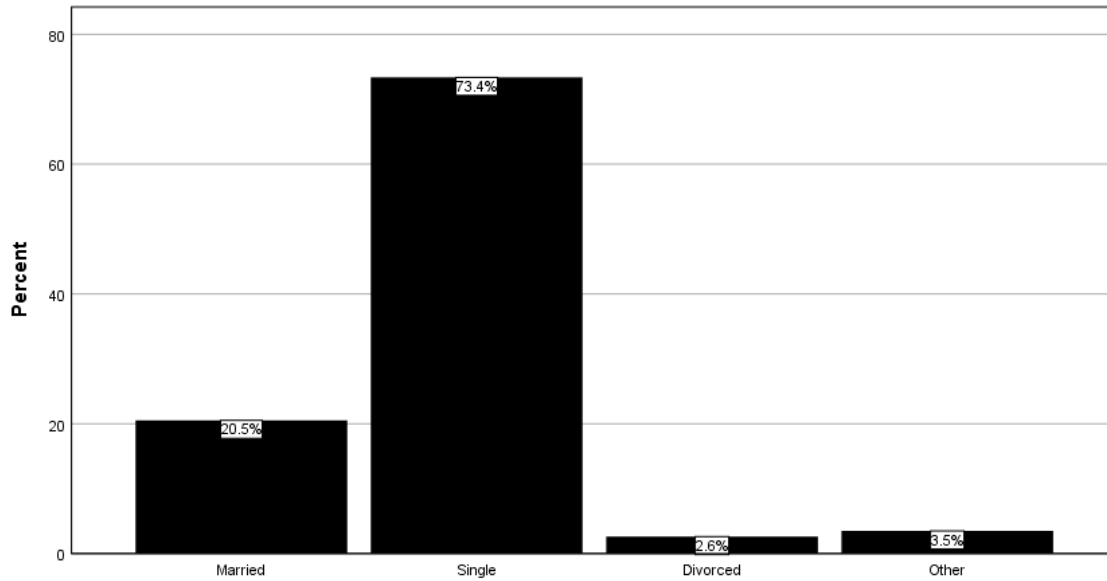
Number of Hours Currently Working in a Week

		Frequency	Percent	Valid Percent
Valid	0	102	22.2	22.3
	Less than 20	150	32.6	32.8
	21-39	130	28.3	28.4
	40+	76	16.5	16.6
	Total	458	99.6	100.0
Missing		2	.4	
Total		460	100.0	



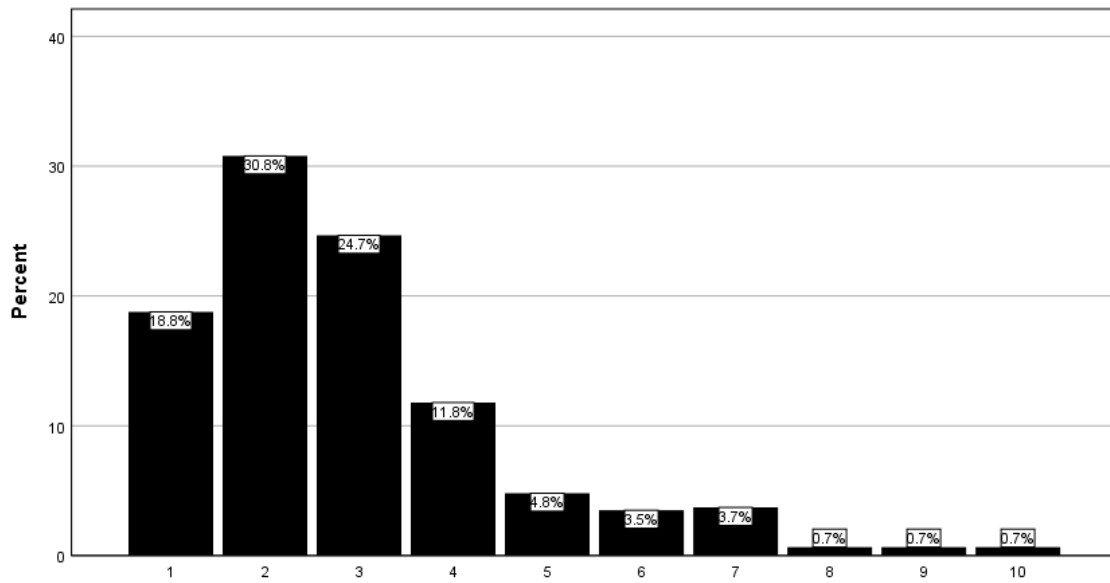
Marital Status

		Frequency	Percent	Valid Percent
Valid	Married	94	20.4	20.5
	Single	336	73.0	73.4
	Divorced	12	2.6	2.6
	Other	16	3.5	3.5
	Total	458	99.6	100.0
Missing		2	.4	
Total		460	100.0	



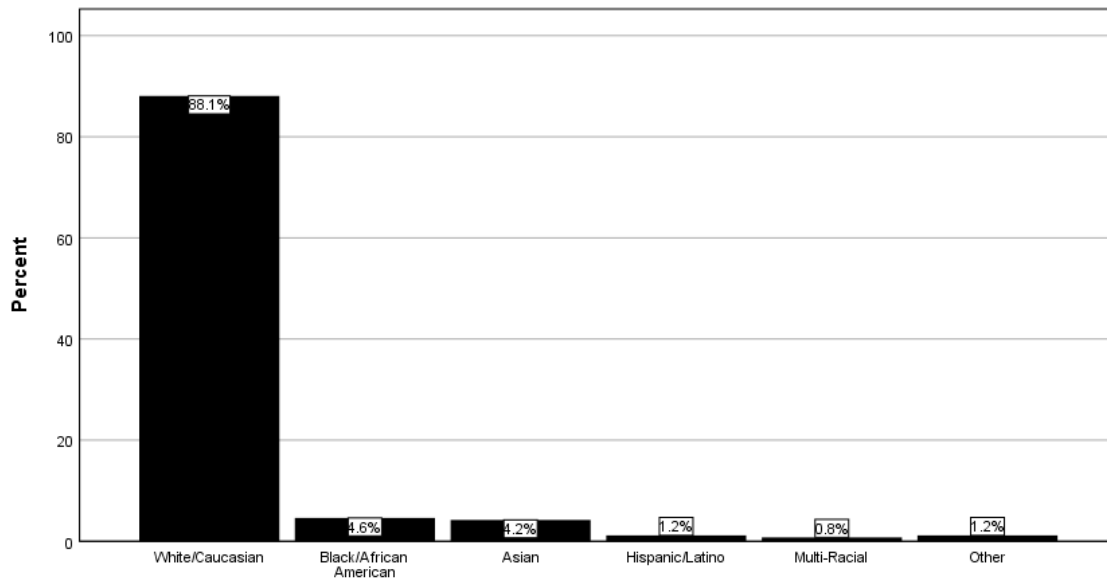
Number of children in your family

		Frequency	Percent	Valid Percent
Valid	1	86	18.7	18.8
	2	141	30.7	30.8
	3	113	24.6	24.7
	4	54	11.7	11.8
	5	22	4.8	4.8
	6	16	3.5	3.5
	7	17	3.7	3.7
	8	3	.7	.7
	9	3	.7	.7
	10	3	.7	.7
	Total	458	99.6	100.0
Missing		2	.4	
Total	460	100.0		



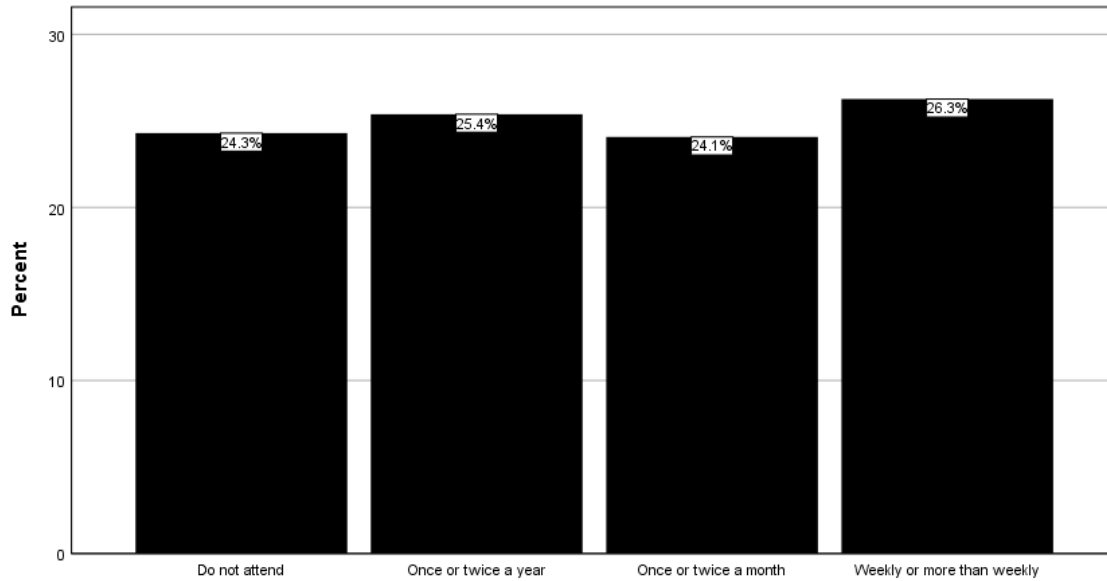
Race

		Frequency	Percent	Valid Percent
Valid	White/Caucasian	229	49.8	88.1
	Black/African American	12	2.6	4.6
	Asian	11	2.4	4.2
	Hispanic/Latino	3	.7	1.2
	Multi-Racial	2	.4	.8
	Other	3	.7	1.2
	Total	260	56.5	100.0
Missing		200	43.5	
Total		460	100.0	



How often do you attend religious activities?

		Frequency	Percent	Valid Percent
Valid	Do not attend	111	24.1	24.3
	Once or twice a year	116	25.2	25.4
	Once or twice a month	110	23.9	24.1
	Weekly or more than weekly	120	26.1	26.3
	Total	457	99.3	100.0
Missing		3	.7	
Total		460	100.0	



Demographic Trend Analysis

Demographic	Response	2010	2011	2012	2013	2014	2015	2016	2017
Number		474	469	443	454	481	530	496	460
Mean Age		24.8	25.1	24.8	25.3	24.8	24.6	25.0	25.3
Mean Number of Children in Your Family		2.9	2.7	2.9	2.8	2.9	2.9	3.0	2.9
Current Number of Hours Enrolled	None	4.6%	3.4%	2.5%	2.0%	2.5%	1.5%	0.6%	1.5%
	<12	24.7%	26.4%	24.5%	22.0%	26.4%	30.2%	27.6%	27.3%
	12+	70.7%	70.1%	72.9%	76.0%	71.1%	68.3%	71.8%	71.2%
Gender	Male	39.3%	42.9%	39.7%	37.7%	38.1%	41.3%	36.6%	33.1%
	Female	60.7%	57.1%	60.3%	62.3%	61.9%	58.7%	63.4%	66.9%
Number of Hours Currently Working in a Week	0	30.6%	31.8%	26.6%	28.9%	28.1%	25.1%	22.8%	22.3%
	1-10	12.7%	8.7%	10.8%	12.6%	13.9%	11.1%	15.7%	15.3%
	11-20	19.0%	16.6%	18.1%	17.8%	12.9%	17.9%	15.7%	17.5%
	21-30	14.3%	15.1%	15.8%	11.9%	13.5%	15.7%	14.9%	13.8%
	31-40	12.0%	14.1%	14.2%	14.1%	15.0%	13.2%	13.1%	14.8%
	40+	11.4%	13.6%	14.4%	14.8%	16.6%	17.0%	17.7%	16.4%
Marital Status	Married	19.1%	22.3%	17.7%	17.7%	17.0%	13.9%	18.8%	20.5%
	Single	75.5%	74.2%	78.0%	76.4%	79.2%	81.1%	77.1%	73.4%
	Divorced	2.1%	1.7%	1.8%	3.3%	1.9%	2.9%	1.4%	2.6%
	Other	3.2%	1.7%	2.5%	2.6%	1.9%	2.1%	2.6%	3.5%
Race	White/Caucasian	36.9%	37.7%	42.0%	42.7%	43.0%	51.1%	43.5%	49.8%
	Black/African American	2.1%	1.9%	1.4%	2.4%	1.0%	2.1%	2.0%	2.6%
	Asian	4.4%	2.8%	3.4%	2.0%	1.7%	1.7%	1.8%	2.4%
	Hispanic/Latino	0.8%	0.4%	0.2%	0.7%	0.6%	0.9%	2.2%	0.7%
	Multi-racial	0.4%	0.0%	0.9%	0.4%	0.4%	0.8%	0.6%	0.4%
	Native American	0.2%	0.2%	0.0%	0.9%	0.2%	0.4%	0.8%	0.0%
	Other	0.0%	0.0%	0.5%	0.4%	0.0%	1.1%	1.0%	0.7%
	Unspecified	55.1%	56.9%	51.7%	50.4%	53.0%	41.9%	47.0%	43.5%
How Often Do You Attend Religious Activities?	Do not attend	21.7%	21.6%	24.0%	24.7%	23.4%	19.7%	20.6%	24.3%
	Once or twice a year	21.7%	23.9%	26.1%	24.9%	25.9%	23.9%	27.1%	25.4%
	Once or twice a month	29.8%	30.3%	26.8%	27.6%	28.2%	33.0%	28.7%	24.1%
	Weekly or more than weekly	26.8%	24.1%	23.1%	22.7%	22.4%	23.5%	23.6%	26.3%

Percents do not include missing values, with the exception of "Race" where missing values are categorized as "Unspecified".

Section II: SMSU Experience

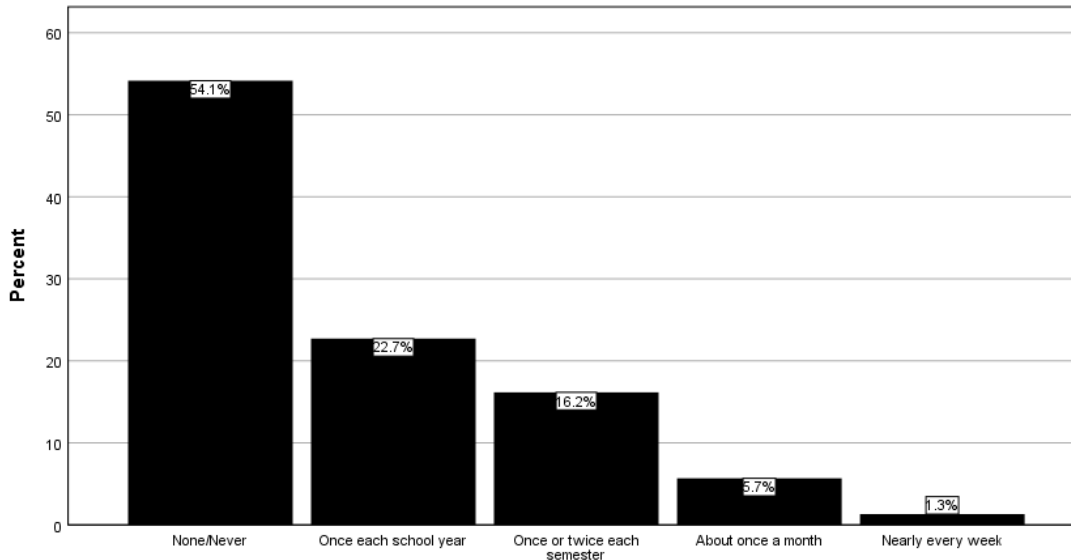
Section II of the Civic Engagement Survey asks students to report on the volunteering and community service experiences they have had while a student at SMSU. Data collected for each survey item are presented on a separate page in this section. For each item, current year data are reported followed immediately by the corresponding trend analysis data covering the past eight academic years.

All survey items in this section of the survey were preceded by the following prompt:

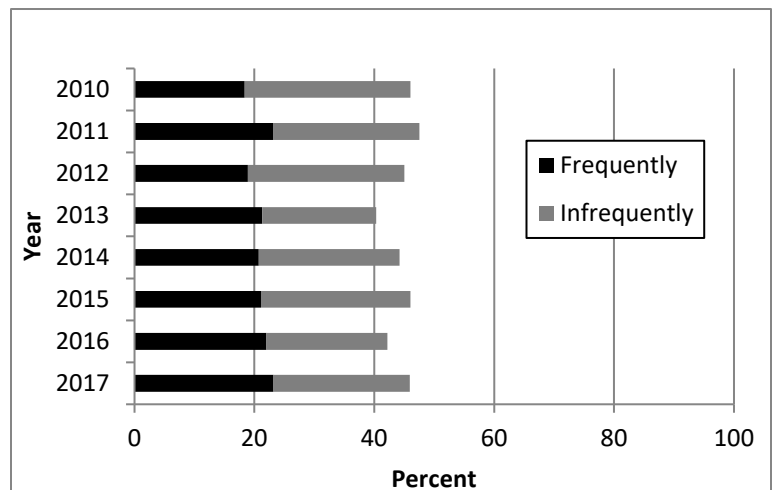
Please indicate how often you have participated in the following as part of your student experiences at SMSU: 1= None/Never 2= Once each school year 3= Once or twice each semester 4= About once a month 5= Nearly every week

Volunteering with others from SMSU for one-time service activities such as: helping out with a Habitat for Humanity project, being part of a food drive, or contributing to the Coats for Kids event

		Frequency	Percent	Valid Percent
Valid	None/Never	248	53.9	54.1
	Once each school year	104	22.6	22.7
	Once or twice each semester	74	16.1	16.2
	About once a month	26	5.7	5.7
	Nearly every week	6	1.3	1.3
	Total	458	99.6	100.0
	Missing	2	.4	
Total		460	100.0	



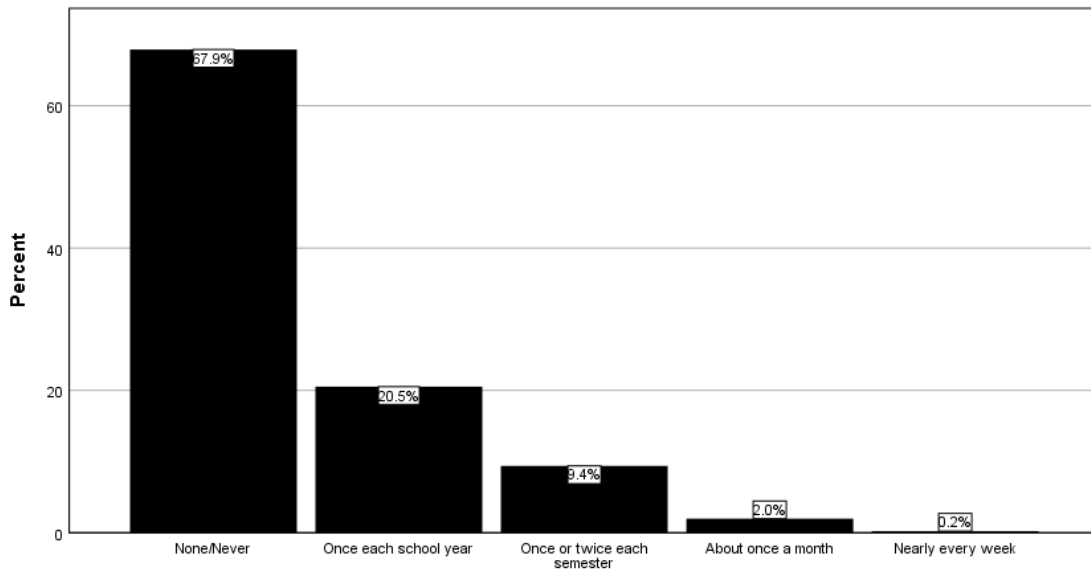
Year	Frequently	Infrequently	None/Never
2010	18.4%	27.6%	54.0%
2011	23.2%	24.3%	52.5%
2012	18.9%	26.1%	55.0%
2013	21.3%	19.0%	59.7%
2014	20.7%	23.5%	55.8%
2015	21.1%	24.9%	54.0%
2016	22.0%	20.2%	57.8%
2017	23.2%	22.7%	54.1%



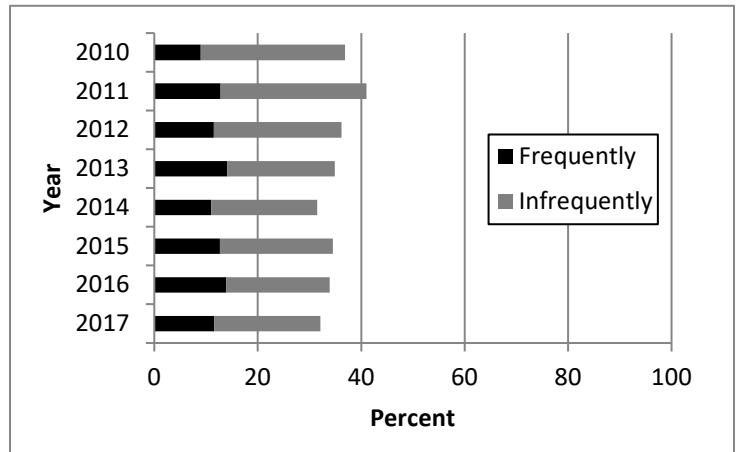
Frequently = Once or more per semester
 Infrequently = Less than once per semester

Volunteering for campus events such as Relay for Life or the annual Chili Feed Cook-off (to support the local food shelf)

		Frequency	Percent	Valid Percent
Valid	None/Never	311	67.6	67.9
	Once each school year	94	20.4	20.5
	Once or twice each semester	43	9.3	9.4
	About once a month	9	2.0	2.0
	Nearly every week	1	.2	.2
	Total	458	99.6	100.0
Missing		2	.4	
Total		460	100.0	



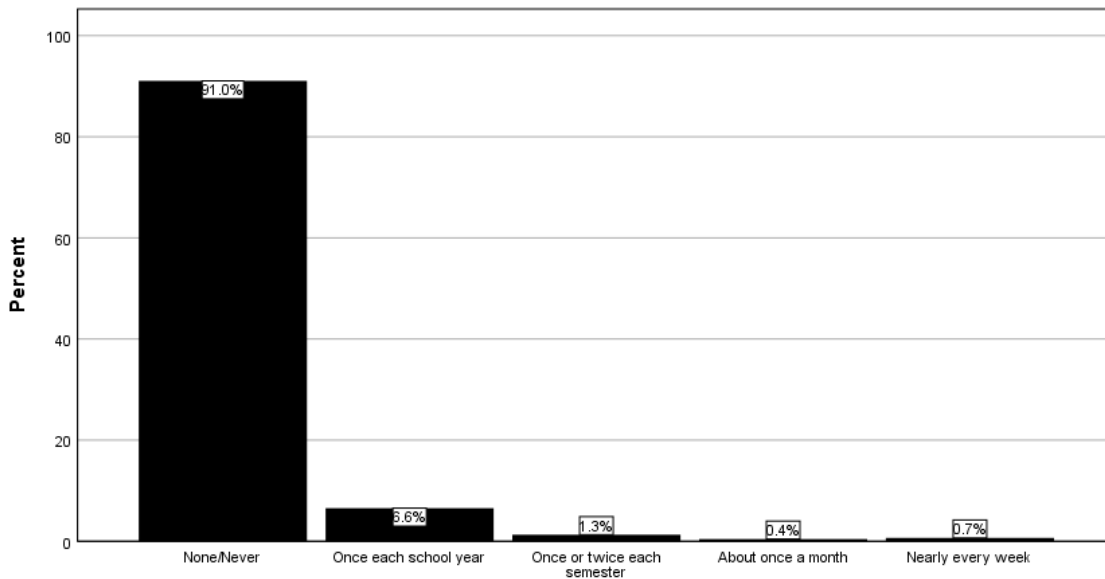
Year	Frequently	Infrequently	None/Never
2010	9.0%	27.9%	63.1%
2011	12.8%	28.2%	59.0%
2012	11.5%	24.7%	63.8%
2013	14.1%	20.8%	65.1%
2014	11.0%	20.5%	68.5%
2015	12.7%	21.8%	65.5%
2016	13.9%	20.0%	66.1%
2017	11.6%	20.5%	67.9%



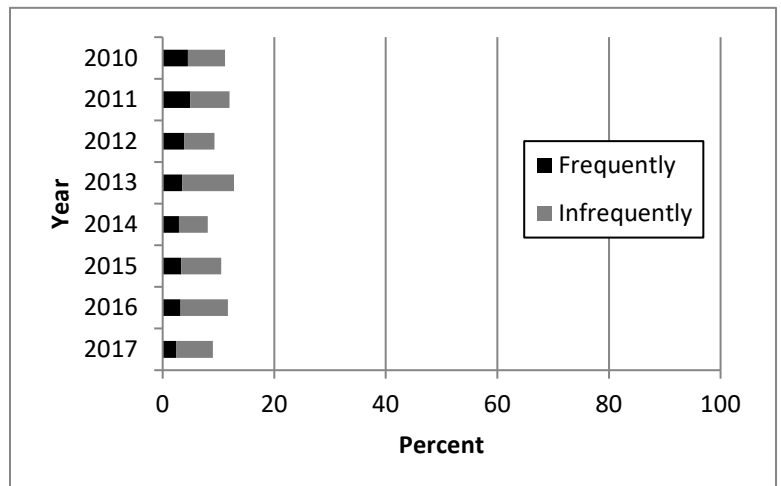
Frequently = Once or more per semester
 Infrequently = Less than once per semester

Participation in a public debate, working on a political campaign, or assisting with voter registration

		Frequency	Percent	Valid Percent
Valid	None/Never	417	90.7	91.0
	Once each school year	30	6.5	6.6
	Once or twice each semester	6	1.3	1.3
	About once a month	2	.4	.4
	Nearly every week	3	.7	.7
	Total	458	99.6	100.0
Missing		2	.4	
Total		460	100.0	



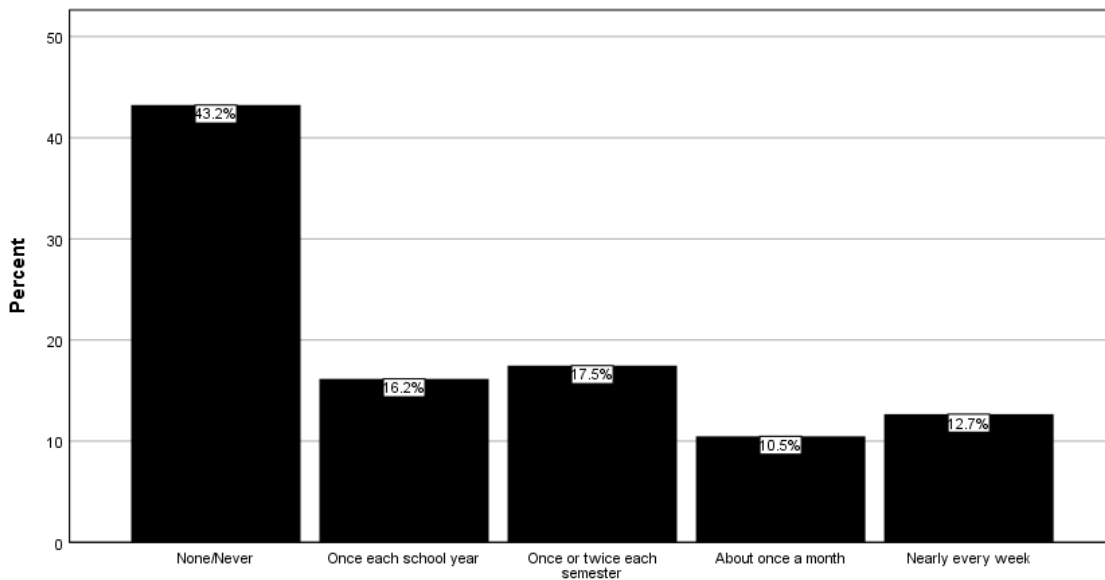
Year	Frequently	Infrequently	None/Never
2010	4.5%	6.7%	88.8%
2011	4.9%	7.1%	88.0%
2012	3.9%	5.4%	90.7%
2013	3.5%	9.3%	87.2%
2014	2.9%	5.2%	91.9%
2015	3.3%	7.2%	89.6%
2016	3.2%	8.5%	88.3%
2017	2.4%	6.6%	91.0%



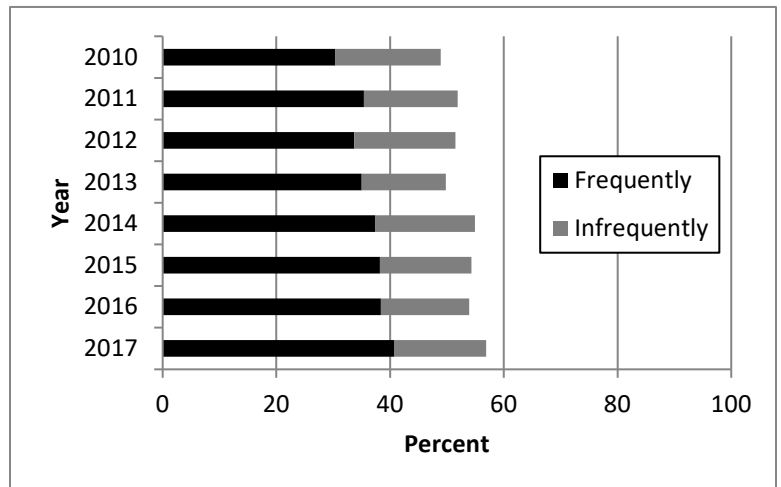
Frequently = Once or more per semester
 Infrequently = Less than once per semester

Community involvement through a campus organization or club

		Frequency	Percent	Valid Percent
Valid	None/Never	198	43.0	43.2
	Once each school year	74	16.1	16.2
	Once or twice each semester	80	17.4	17.5
	About once a month	48	10.4	10.5
	Nearly every week	58	12.6	12.7
	Total	458	99.6	100.0
	Missing	2	.4	
Total		460	100.0	



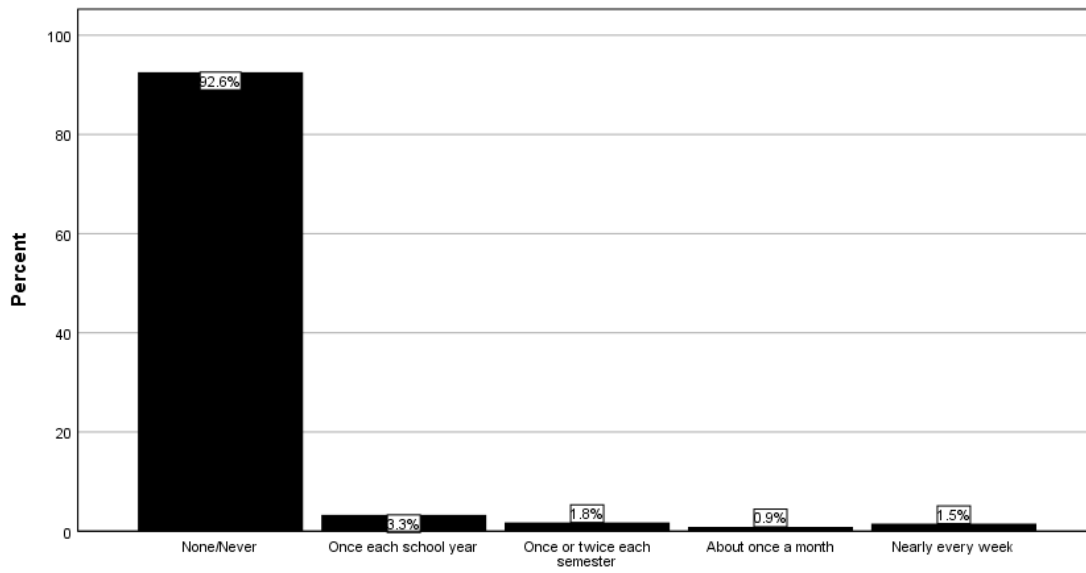
Year	Frequently	Infrequently	None/Never
2010	30.4%	18.5%	51.1%
2011	35.4%	16.5%	48.1%
2012	33.7%	17.8%	48.5%
2013	35.0%	14.8%	50.2%
2014	37.4%	17.5%	45.1%
2015	38.2%	16.1%	45.7%
2016	38.4%	15.5%	46.2%
2017	40.7%	16.2%	43.2%



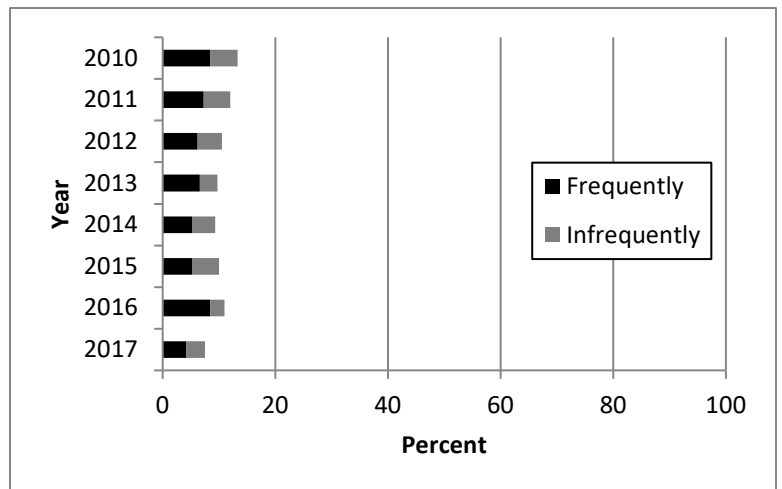
Frequently = Once or more per semester
 Infrequently = Less than once per semester

Have you participated in community service through Federal Work Study?

		Frequency	Percent	Valid Percent
Valid	None/Never	423	92.0	92.6
	Once each school year	15	3.3	3.3
	Once or twice each semester	8	1.7	1.8
	About once a month	4	.9	.9
	Nearly every week	7	1.5	1.5
	Total	457	99.3	100.0
Missing		3	.7	
Total		460	100.0	



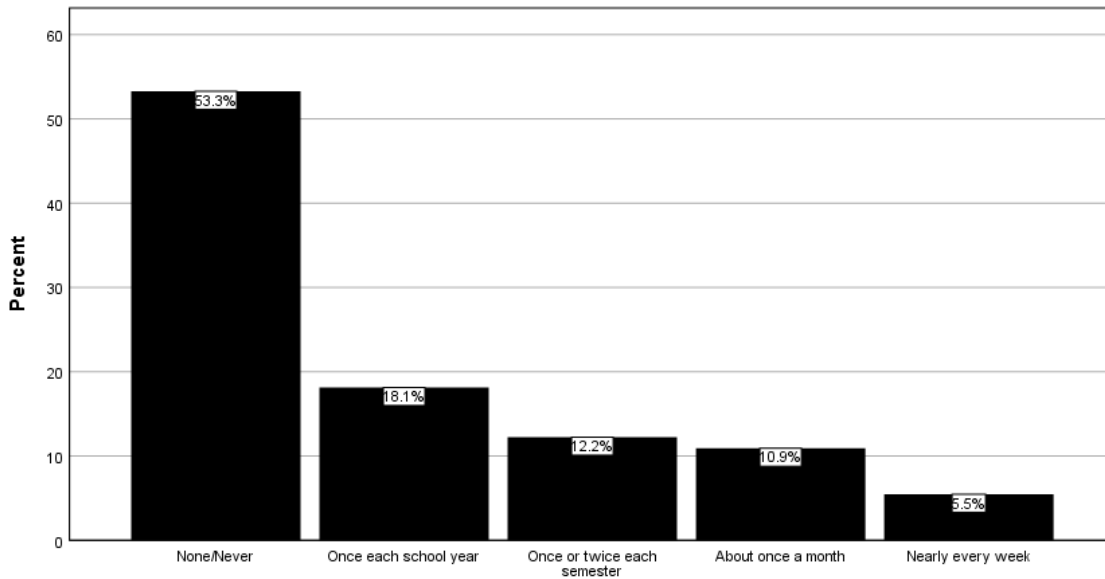
Year	Frequently	Infrequently	None/Never
2010	8.4%	4.9%	86.7%
2011	7.3%	4.7%	88.0%
2012	6.2%	4.3%	89.5%
2013	6.6%	3.1%	90.3%
2014	5.3%	4.0%	90.8%
2015	5.3%	4.7%	90.0%
2016	8.4%	2.6%	88.9%
2017	4.2%	3.3%	92.6%



Frequently = Once or more per semester
 Infrequently = Less than once per semester

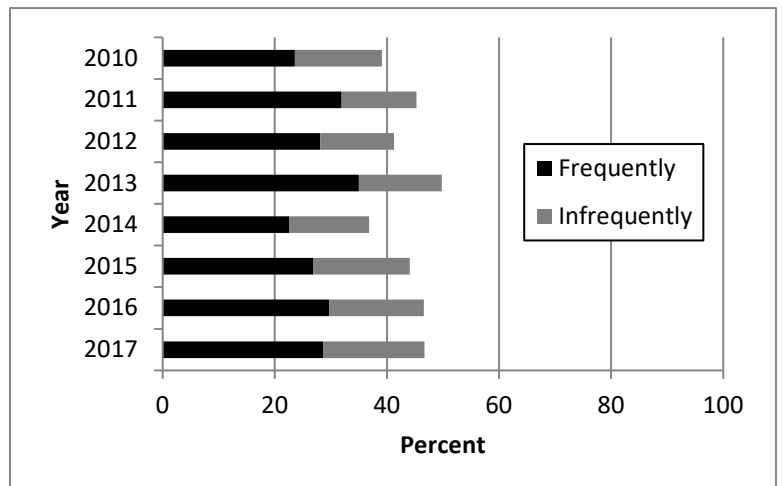
Have you participated in community service through an organization that was not connected to SMSU?

		Frequency	Percent	Valid Percent
Valid	None/Never	244	53.0	53.3
	Once each school year	83	18.0	18.1
	Once or twice each semester	56	12.2	12.2
	About once a month	50	10.9	10.9
	Nearly every week	25	5.4	5.5
	Total	458	99.6	100.0
Missing		2	.4	
Total		460	100.0	



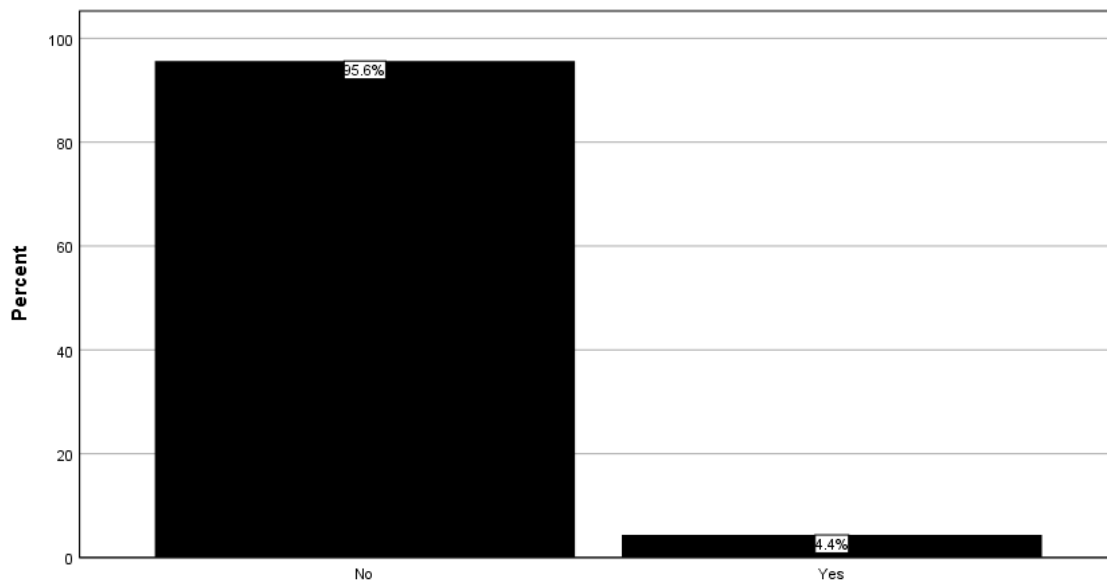
Year	Frequently	Infrequently	None/Never
2010	23.6%	15.5%	60.9%
2011	31.9%	13.4%	54.7%
2012	28.1%	13.2%	58.7%
2013	35.0%	14.8%	50.2%
2014	22.6%	14.2%	63.3%
2015	26.9%	17.2%	55.8%
2016	29.7%	16.9%	53.4%
2017	28.6%	18.1%	53.3%

Frequently = Once or more per semester
 Infrequently = Less than once per semester

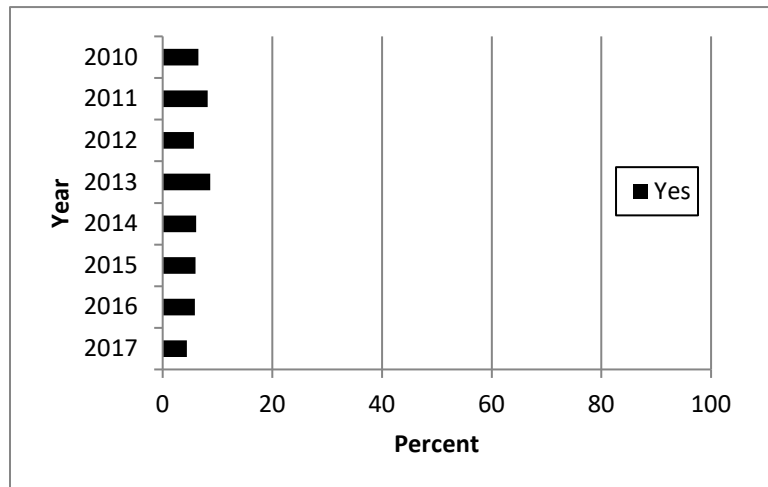


Have you ever participated in community service as part of a scholarship?

		Frequency	Percent	Valid Percent
Valid	No	438	95.2	95.6
	Yes	20	4.3	4.4
	Total	458	99.6	100.0
Missing		2	.4	
Total		460	100.0	

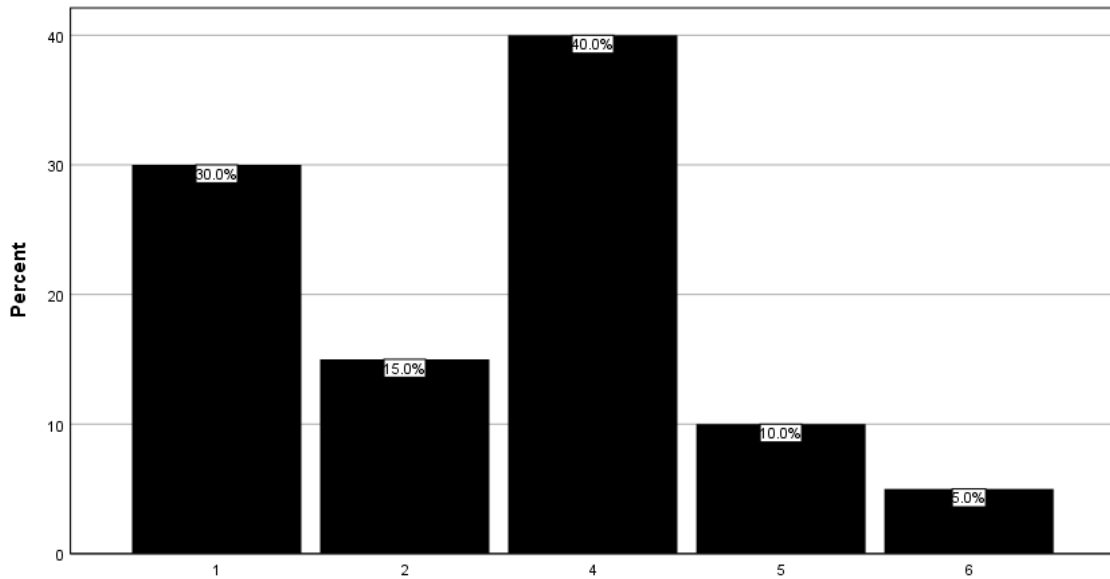


Year	Yes	No
2010	6.5%	93.5%
2011	8.2%	91.8%
2012	5.7%	94.3%
2013	8.7%	91.3%
2014	6.1%	93.9%
2015	6.0%	94.0%
2016	5.9%	94.1%
2017	4.4%	95.6%



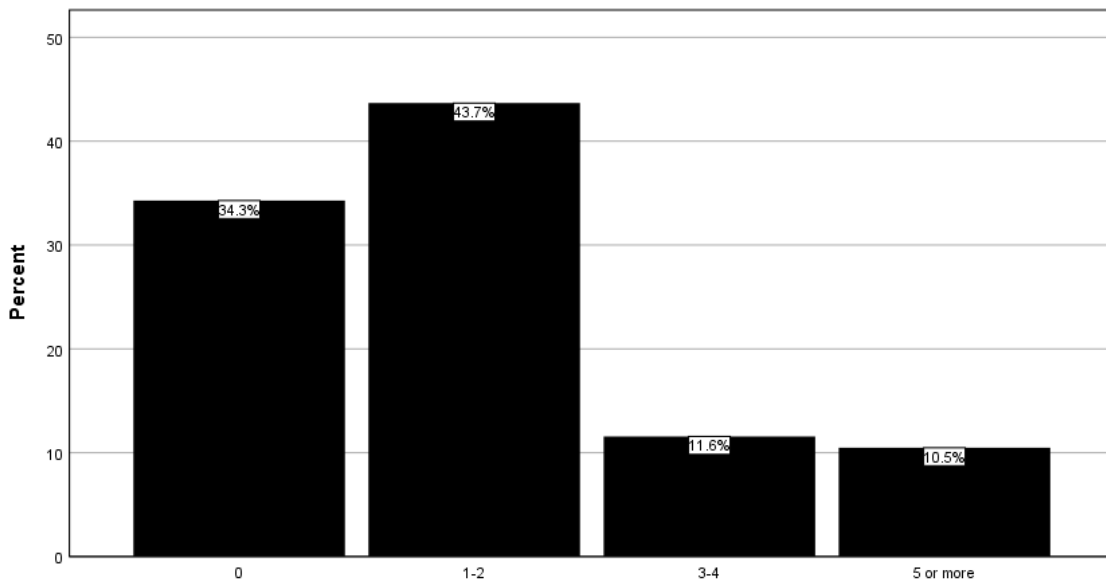
If involved in community service as part of a scholarship, for how many years?

		Frequency	Percent	Valid Percent
Valid	1	6	1.3	30.0
	2	3	.7	15.0
	4	8	1.7	40.0
	5	2	.4	10.0
	6	1	.2	5.0
	Total	20	4.3	100.0
Missing		440	95.7	
Total		460	100.0	

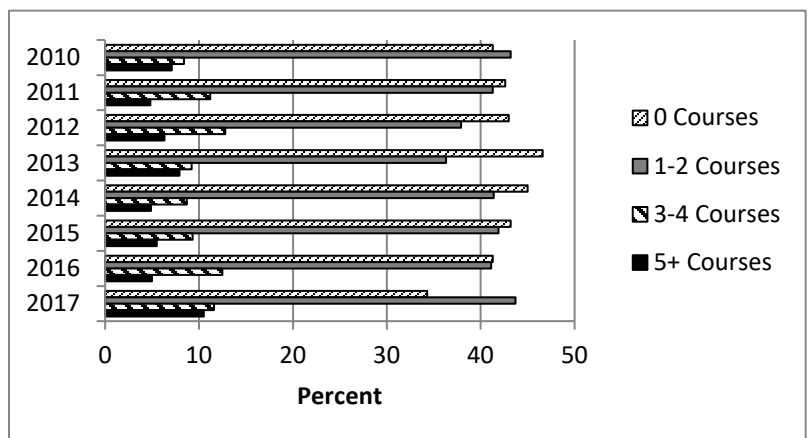


Please estimate the number of courses that you have taken at SMSU that have included community involvement such as volunteer service, community-based learning experiences, one-time service projects, or other service activities.

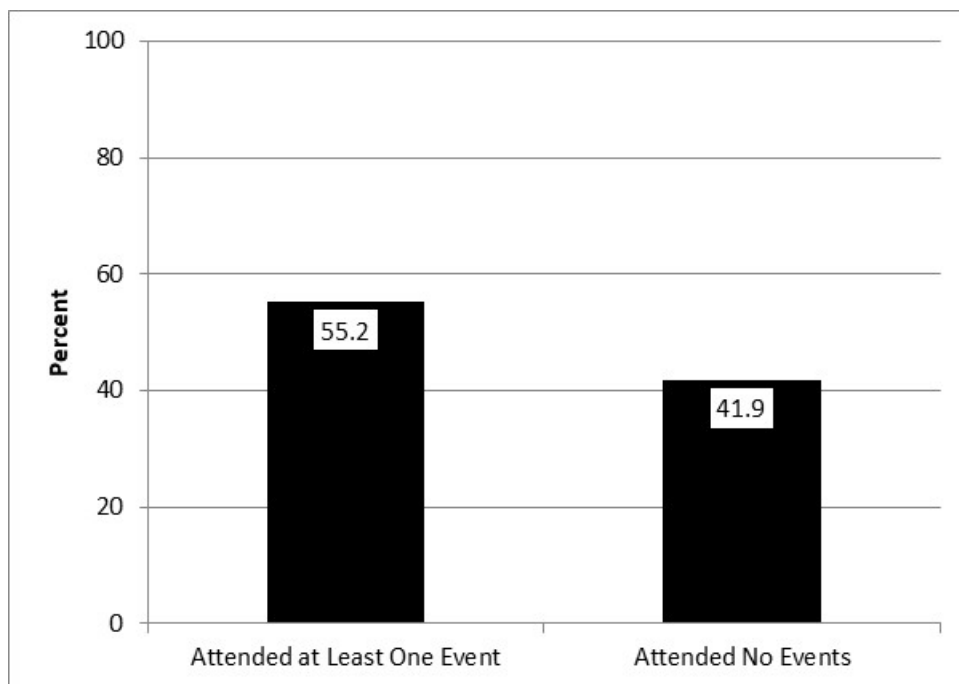
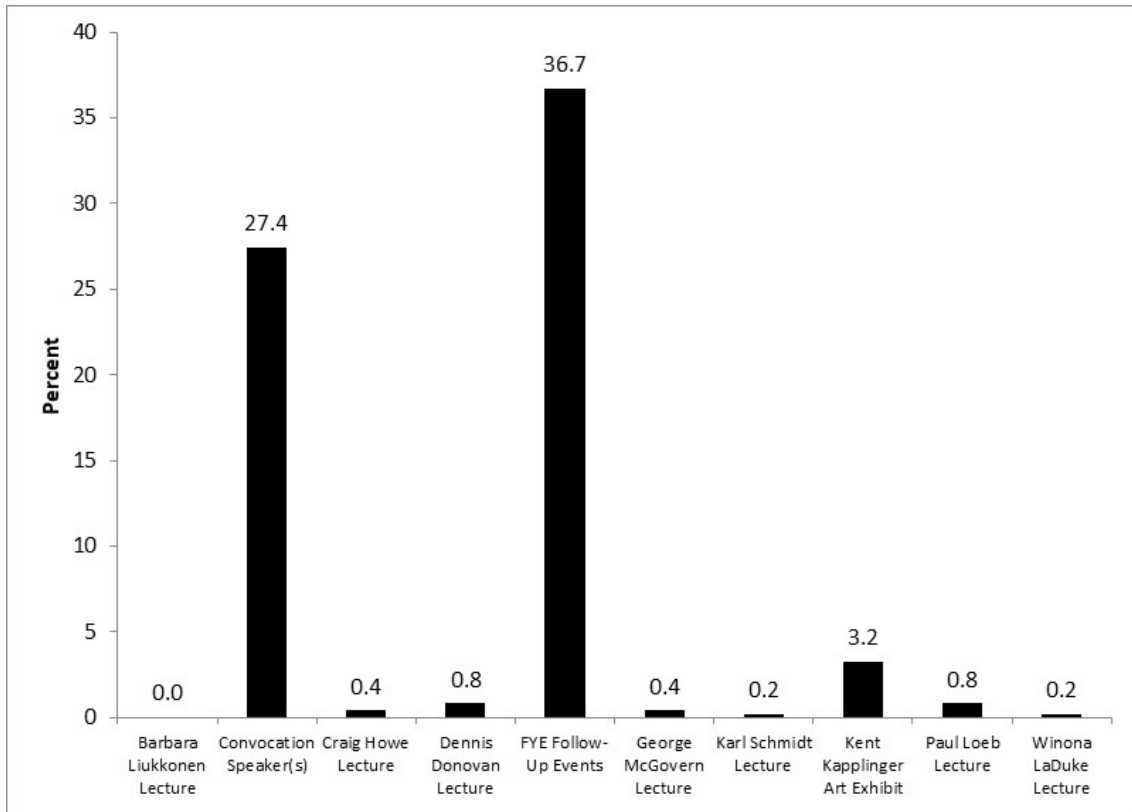
		Frequency	Percent	Valid Percent
Valid	0	157	34.1	34.3
	1-2	200	43.5	43.7
	3-4	53	11.5	11.6
	5 or more	48	10.4	10.5
	Total	458	99.6	100.0
Missing		2	.4	
Total		460	100.0	



Year	Number of Courses			
	0	1-2	3-4	5+
2010	41.3%	43.2%	8.4%	7.1%
2011	42.6%	41.3%	11.2%	4.8%
2012	43.0%	37.9%	12.8%	6.3%
2013	46.6%	36.3%	9.2%	7.9%
2014	45.0%	41.4%	8.7%	4.9%
2015	43.2%	41.9%	9.3%	5.5%
2016	41.3%	41.1%	12.5%	5.0%
2017	34.3%	43.7%	11.6%	10.5%



Which of the following First Year Experience events have you attended at SMSU?
(Check all that apply.)



Section III: Civic Minded Graduate Scale

Section III of the Civic Engagement Survey consisted of the 30-item Civic Minded Graduate [CMG] scale. This scale is used to measure students' knowledge, skills, attitudes, and behavioral intentions toward civic engagement. Data collected for each survey item are presented on a separate page in this section. At the end of the section, data for each of the subscales are compiled and are immediately followed by a trend analysis covering the past seven academic years.

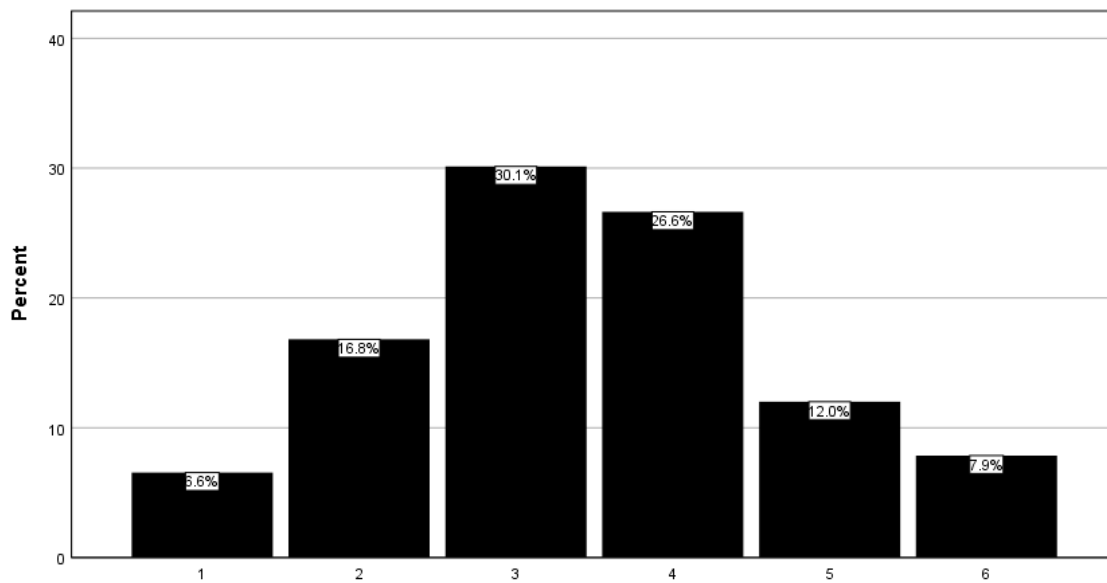
All survey items in this section of the survey were preceded by the following prompt:

Please indicate whether you agree or disagree with the following. 1= Strongly Disagree 6= Strongly Agree

[CMG1] My experiences at SMSU have helped me know a lot about opportunities to become involved in the community. (1=Strongly Disagree; 6=Strongly Agree)

N	Valid	458
	Missing	2
Mean		3.44
Std. Deviation		1.301

		Frequency	Percent	Valid Percent
Valid	1	30	6.5	6.6
	2	77	16.7	16.8
	3	138	30.0	30.1
	4	122	26.5	26.6
	5	55	12.0	12.0
	6	36	7.8	7.9
	Total	458	99.6	100.0
Missing		2	.4	
Total		460	100.0	

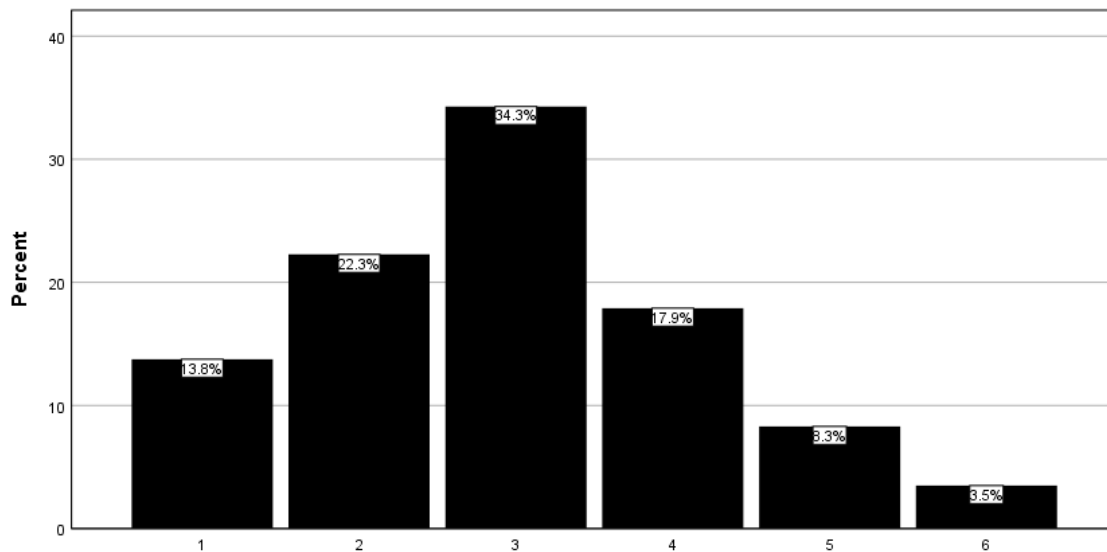


[CMG2] As a result of my experiences at SMSU, other students who know me well would describe me as a person who can discuss controversial social issues with civility and respect.

(1=Strongly Disagree; 6=Strongly Agree)

N	Valid	458
	Missing	2
Mean		2.95
Std. Deviation		1.265

		Frequency	Percent	Valid Percent
Valid	1	63	13.7	13.8
	2	102	22.2	22.3
	3	157	34.1	34.3
	4	82	17.8	17.9
	5	38	8.3	8.3
	6	16	3.5	3.5
	Total	458	99.6	100.0
Missing		2	.4	
Total		460	100.0	

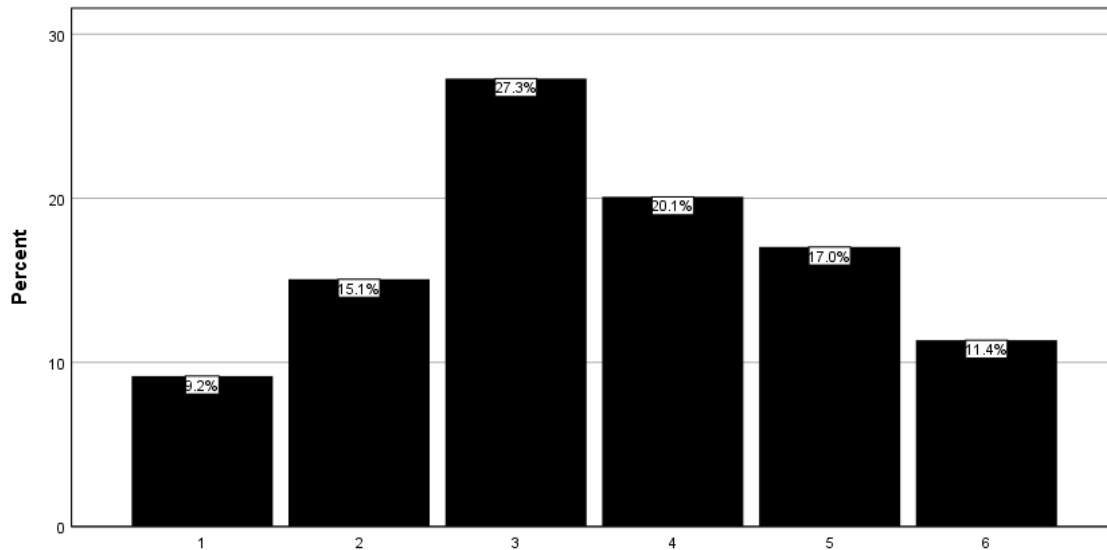


[CMG3] My experiences at SMSU have prepared me to write a letter to the newspaper or community leaders about a community issue.

(1=Strongly Disagree; 6=Strongly Agree)

N	Valid	458
	Missing	2
Mean		3.55
Std. Deviation		1.458

		Frequency	Percent	Valid Percent
Valid	1	42	9.1	9.2
	2	69	15.0	15.1
	3	125	27.2	27.3
	4	92	20.0	20.1
	5	78	17.0	17.0
	6	52	11.3	11.4
	Total	458	99.6	100.0
Missing		2	.4	
Total		460	100.0	

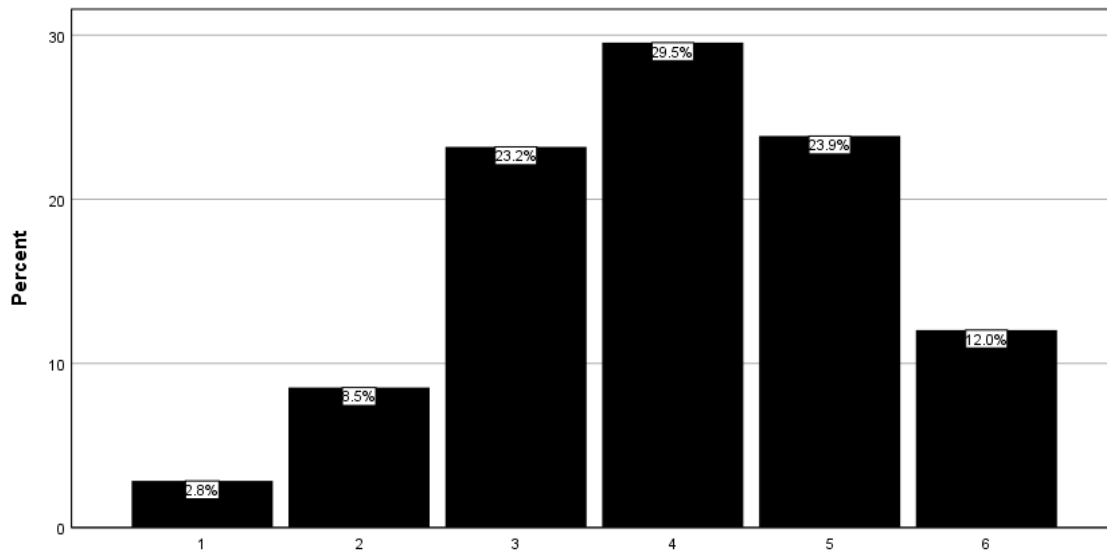


[CMG4] My SMSU education has given me the professional knowledge and skills that I need to help address community issues.

(1=Strongly Disagree; 6=Strongly Agree)

N	Valid	457
	Missing	3
Mean		3.99
Std. Deviation		1.246

		Frequency	Percent	Valid Percent
Valid	1	13	2.8	2.8
	2	39	8.5	8.5
	3	106	23.0	23.2
	4	135	29.3	29.5
	5	109	23.7	23.9
	6	55	12.0	12.0
	Total		457	99.3
Missing	System	3	.7	
Total		460	100.0	

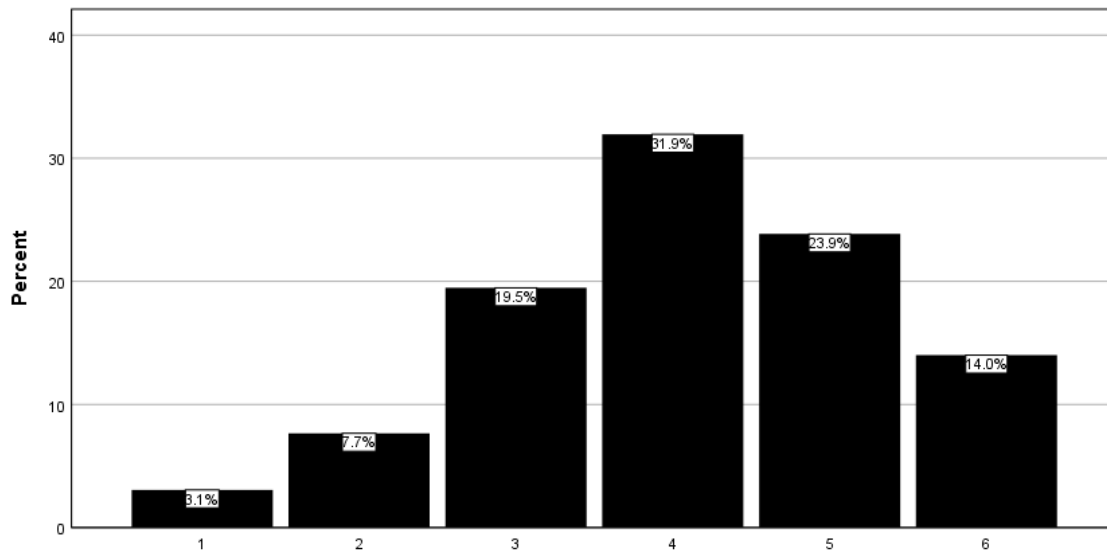


[CMG5] My experiences at SMSU have helped make me a good listener, even when peoples' opinions are different from mine.

(1=Strongly Disagree; 6=Strongly Agree)

N	Valid	457
	Missing	3
Mean		4.08
Std. Deviation		1.254

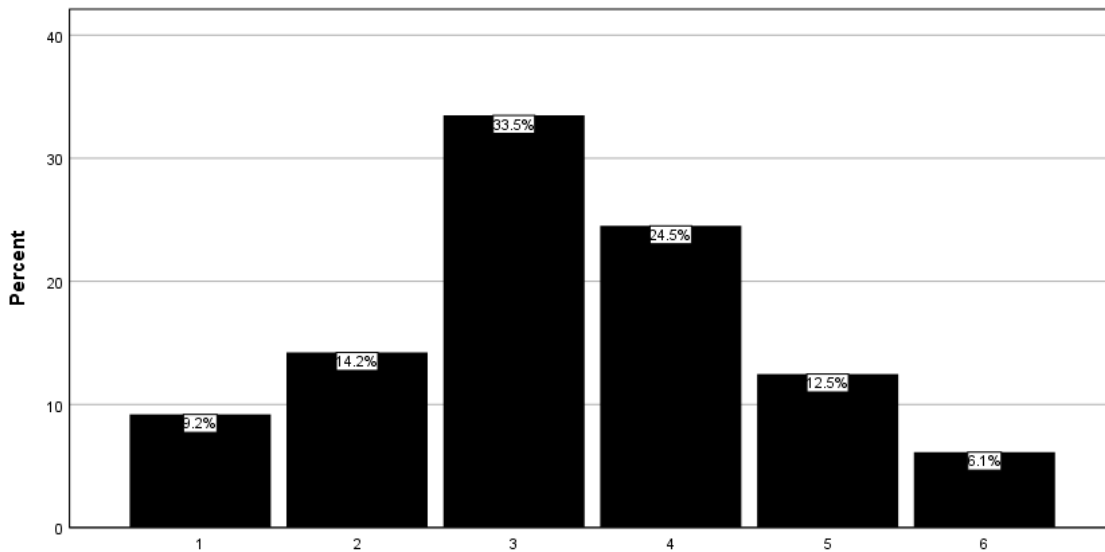
		Frequency	Percent	Valid Percent
Valid	1	14	3.0	3.1
	2	35	7.6	7.7
	3	89	19.3	19.5
	4	146	31.7	31.9
	5	109	23.7	23.9
	6	64	13.9	14.0
	Total		457	99.3
Missing	System	3	.7	
Total		460	100.0	



[CMG6] Based on my experiences at SMSU, I would say that most other students know less about community organizations and volunteer opportunities than I do.
 (1=Strongly Disagree; 6=Strongly Agree)

N	Valid	457
	Missing	3
Mean		3.35
Std. Deviation		1.298

		Frequency	Percent	Valid Percent
Valid	1	42	9.1	9.2
	2	65	14.1	14.2
	3	153	33.3	33.5
	4	112	24.3	24.5
	5	57	12.4	12.5
	6	28	6.1	6.1
	Total		457	99.3
Missing	System	3	.7	
Total		460	100.0	

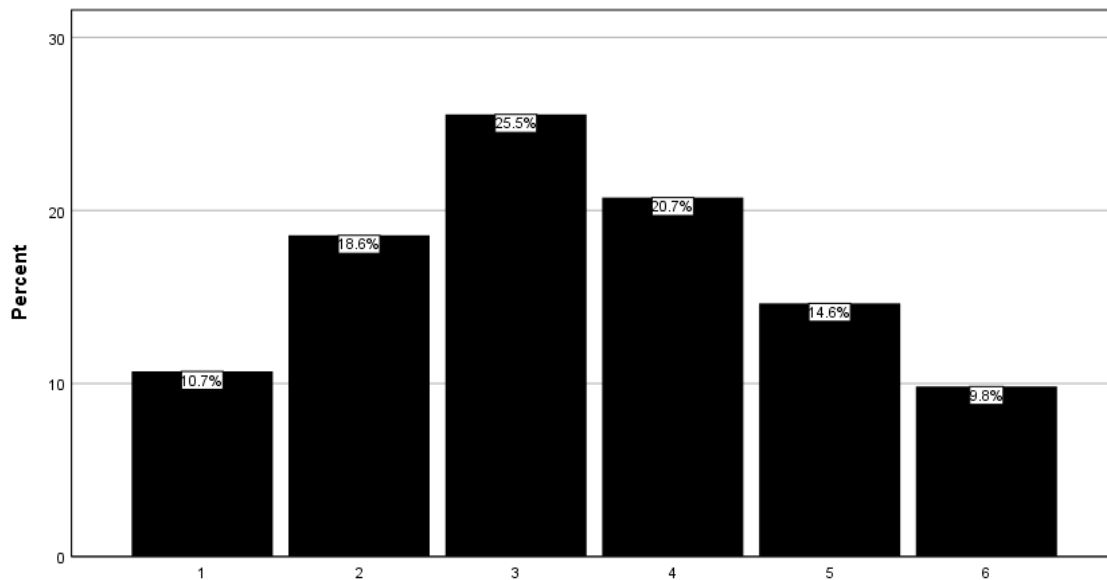


[CMG7] My experiences at SMSU have helped me realize that it is important for me to vote and be politically involved.

(1=Strongly Disagree; 6=Strongly Agree)

N	Valid	458
	Missing	2
Mean		3.40
Std. Deviation		1.462

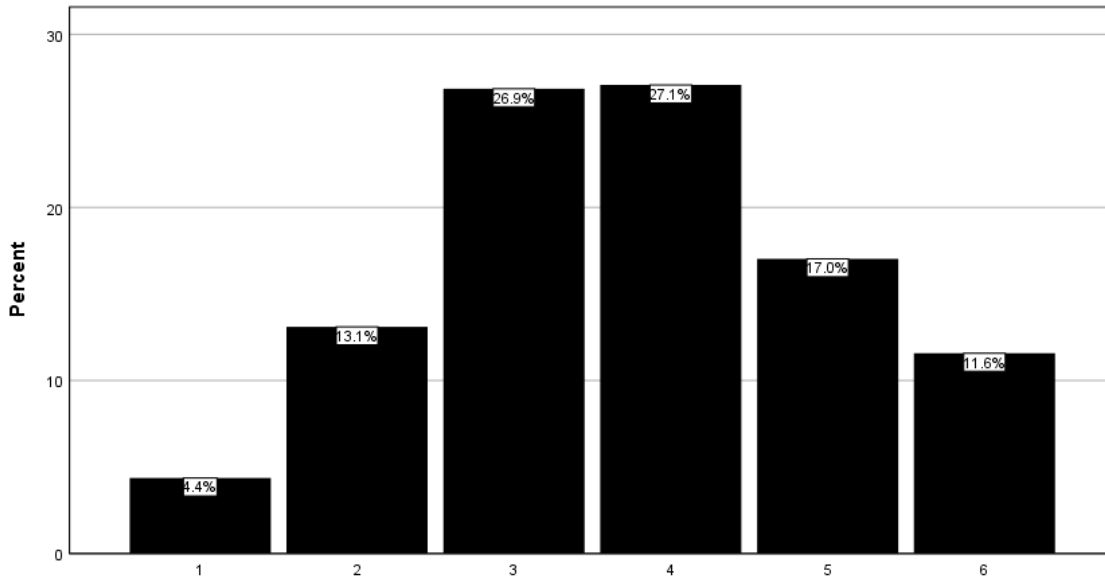
		Frequency	Percent	Valid Percent
Valid	1	49	10.7	10.7
	2	85	18.5	18.6
	3	117	25.4	25.5
	4	95	20.7	20.7
	5	67	14.6	14.6
	6	45	9.8	9.8
	Total		458	99.6
Missing	System	2	.4	
Total		460	100.0	



[CMG8] My education at SMSU has increased my confidence that I can contribute to improving life in my community.
 (1=Strongly Disagree; 6=Strongly Agree)

N	Valid	458
	Missing	2
Mean		3.74
Std. Deviation		1.325

		Frequency	Percent	Valid Percent
Valid	1	20	4.3	4.4
	2	60	13.0	13.1
	3	123	26.7	26.9
	4	124	27.0	27.1
	5	78	17.0	17.0
	6	53	11.5	11.6
	Total	458	99.6	100.0
Missing		2	.4	
Total		460	100.0	

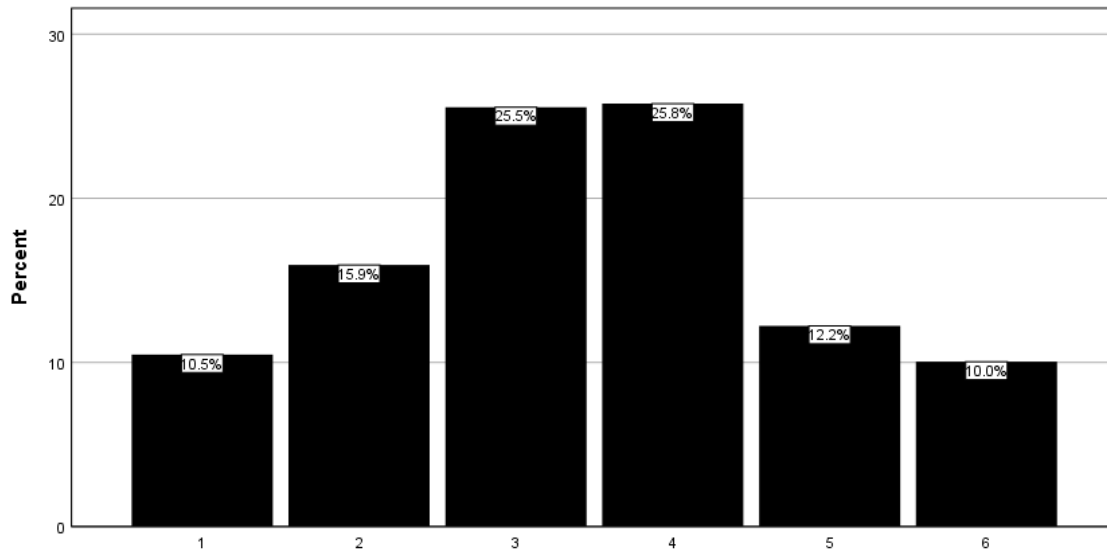


[CMG9] Because of my SMSU education, I believe that my community is enriched by having some cultural or ethnic diversity.

(1=Strongly Disagree; 6=Strongly Agree)

N	Valid	458
	Missing	2
Mean		3.43
Std. Deviation		1.430

		Frequency	Percent	Valid Percent
Valid	1	48	10.4	10.5
	2	73	15.9	15.9
	3	117	25.4	25.5
	4	118	25.7	25.8
	5	56	12.2	12.2
	6	46	10.0	10.0
	Total	458	99.6	100.0
Missing		2	.4	
Total		460	100.0	

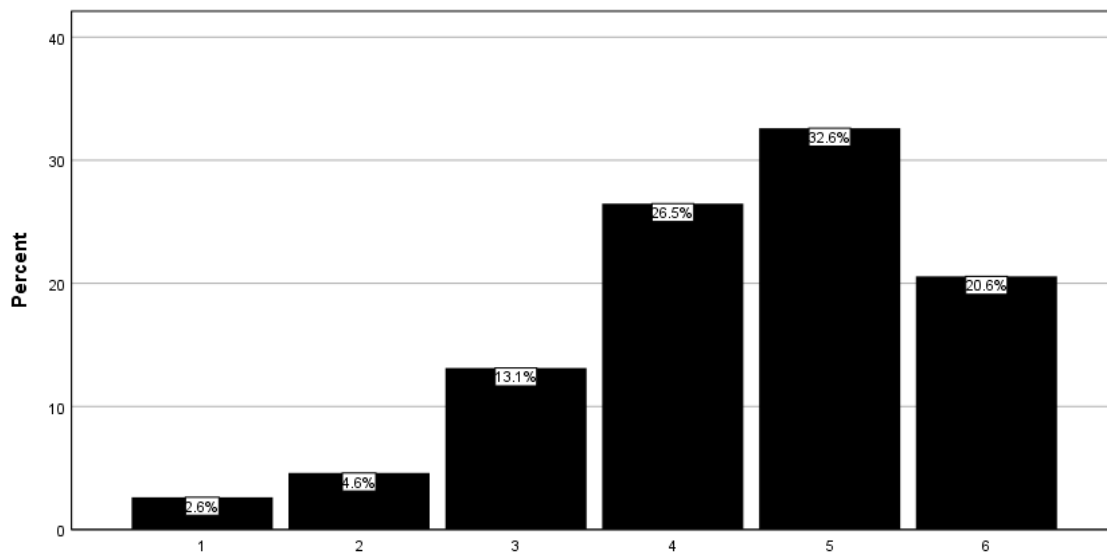


[CMG10] My experiences at SMSU have helped me realize that when members of my group disagree on how to solve a problem, I like to try to build consensus.

(1=Strongly Disagree; 6=Strongly Agree)

N	Valid	457
	Missing	3
Mean		4.44
Std. Deviation		1.230

		Frequency	Percent	Valid Percent
Valid	1	12	2.6	2.6
	2	21	4.6	4.6
	3	60	13.0	13.1
	4	121	26.3	26.5
	5	149	32.4	32.6
	6	94	20.4	20.6
	Total	457	99.3	100.0
Missing		3	.7	
Total		460	100.0	

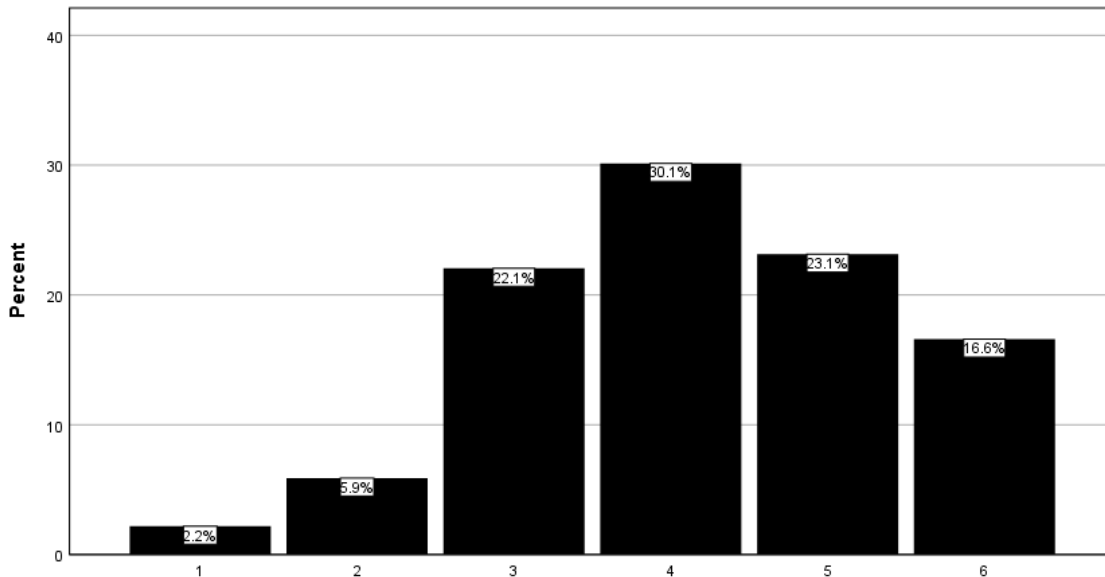


[CMG11] My education at SMSU has made me aware of a number of community issues that need to be addressed.

(1=Strongly Disagree; 6=Strongly Agree)

N	Valid	458
	Missing	2
Mean		4.16
Std. Deviation		1.235

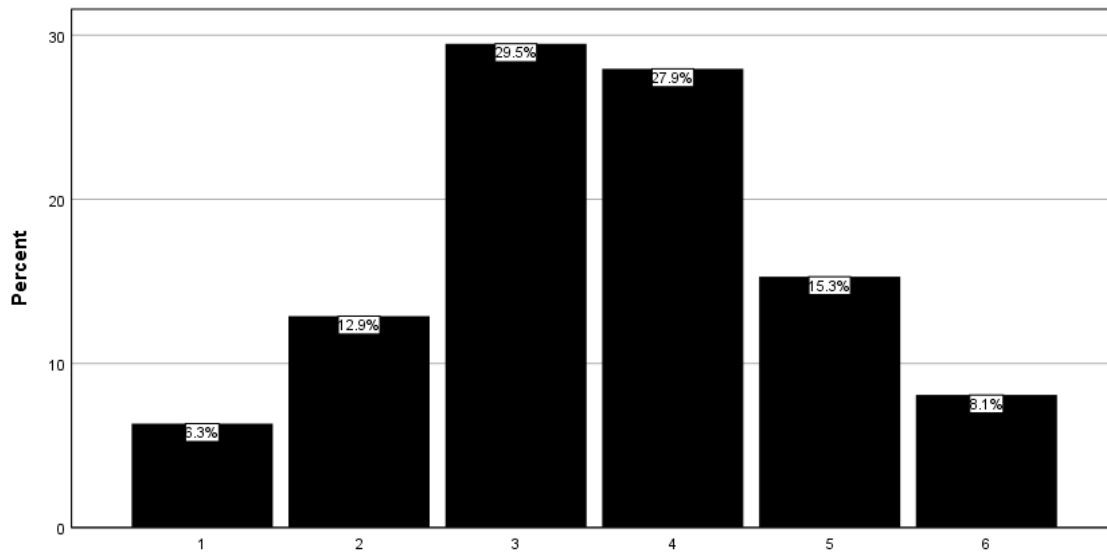
		Frequency	Percent	Valid Percent
Valid	1	10	2.2	2.2
	2	27	5.9	5.9
	3	101	22.0	22.1
	4	138	30.0	30.1
	5	106	23.0	23.1
	6	76	16.5	16.6
	Total	458	99.6	100.0
Missing		2	.4	
Total		460	100.0	



[CMG12] My experiences at SMSU have increased my motivation to participate in advocacy or political action groups after I graduate.
 (1=Strongly Disagree; 6=Strongly Agree)

N	Valid	458
	Missing	2
Mean		3.57
Std. Deviation		1.295

		Frequency	Percent	Valid Percent
Valid	1	29	6.3	6.3
	2	59	12.8	12.9
	3	135	29.3	29.5
	4	128	27.8	27.9
	5	70	15.2	15.3
	6	37	8.0	8.1
	Total	458	99.6	100.0
Missing		2	.4	
Total		460	100.0	

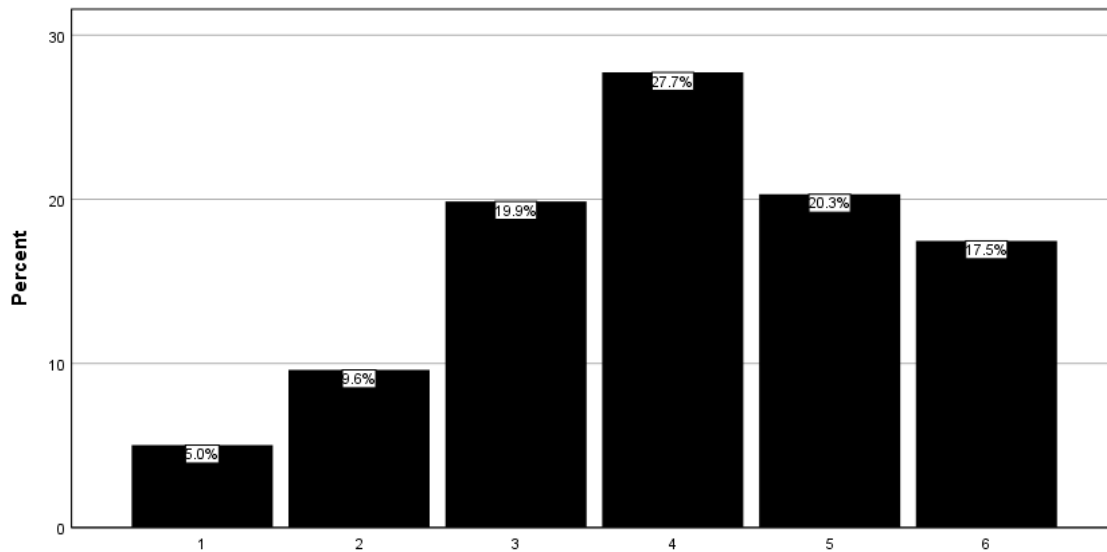


[CMG13] Through my experiences at SMSU, I am very familiar with clubs and organizations that encourage and support community involvement for college students.

(1=Strongly Disagree; 6=Strongly Agree)

N	Valid	458
	Missing	2
Mean		4.01
Std. Deviation		1.393

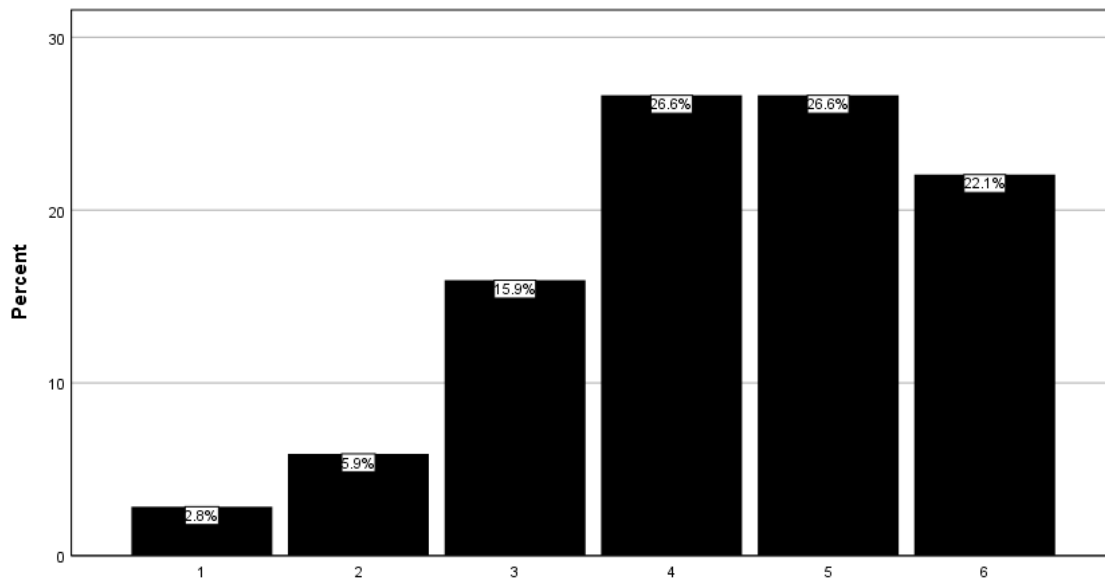
		Frequency	Percent	Valid Percent
Valid	1	23	5.0	5.0
	2	44	9.6	9.6
	3	91	19.8	19.9
	4	127	27.6	27.7
	5	93	20.2	20.3
	6	80	17.4	17.5
	Total	458	99.6	100.0
Missing		2	.4	
Total		460	100.0	



[CMG14] My SMSU experiences helped me realize that I like to be involved in addressing community issues.
 (1=Strongly Disagree; 6=Strongly Agree)

N	Valid	458
	Missing	2
Mean		4.34
Std. Deviation		1.298

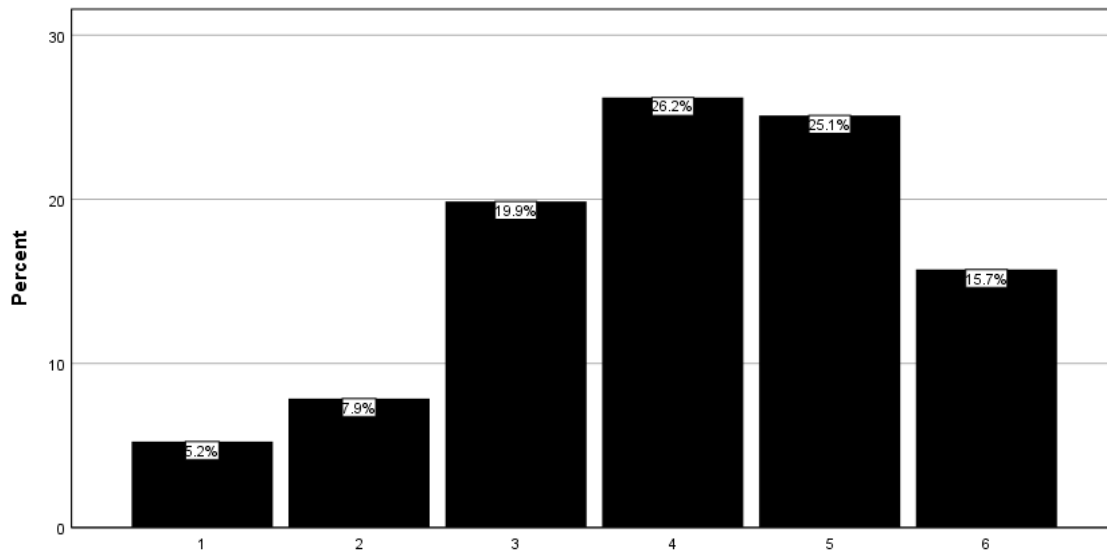
		Frequency	Percent	Valid Percent
Valid	1	13	2.8	2.8
	2	27	5.9	5.9
	3	73	15.9	15.9
	4	122	26.5	26.6
	5	122	26.5	26.6
	6	101	22.0	22.1
	Total		458	99.6
Missing		2	.4	
Total		460	100.0	



[CMG15] Because of the experiences at SMSU, I believe that having an impact on community problems is within my reach.
 (1=Strongly Disagree; 6=Strongly Agree)

N	Valid	458
	Missing	2
Mean		4.05
Std. Deviation		1.366

		Frequency	Percent	Valid Percent
Valid	1	24	5.2	5.2
	2	36	7.8	7.9
	3	91	19.8	19.9
	4	120	26.1	26.2
	5	115	25.0	25.1
	6	72	15.7	15.7
	Total		458	99.6
Missing		2	.4	
Total		460	100.0	

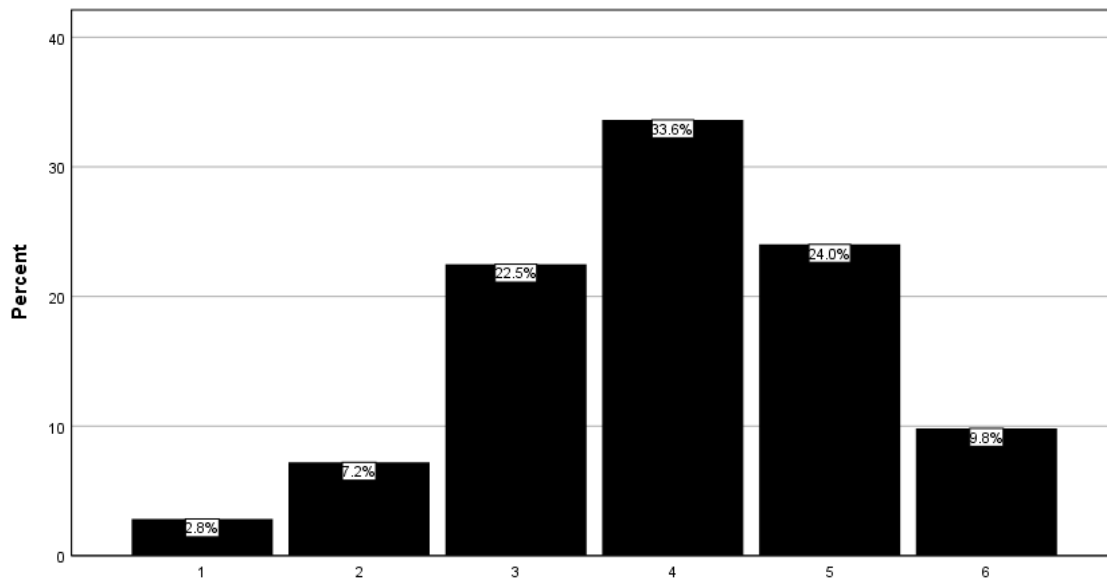


[CMG16] Because of my SMSU experiences, I plan to stay current with the local and national news after I graduate.

(1=Strongly Disagree; 6=Strongly Agree)

N	Valid	458
	Missing	2
Mean		3.98
Std. Deviation		1.185

		Frequency	Percent	Valid Percent
Valid	1	13	2.8	2.8
	2	33	7.2	7.2
	3	103	22.4	22.5
	4	154	33.5	33.6
	5	110	23.9	24.0
	6	45	9.8	9.8
	Total		458	99.6
Missing		2	.4	
Total		460	100.0	

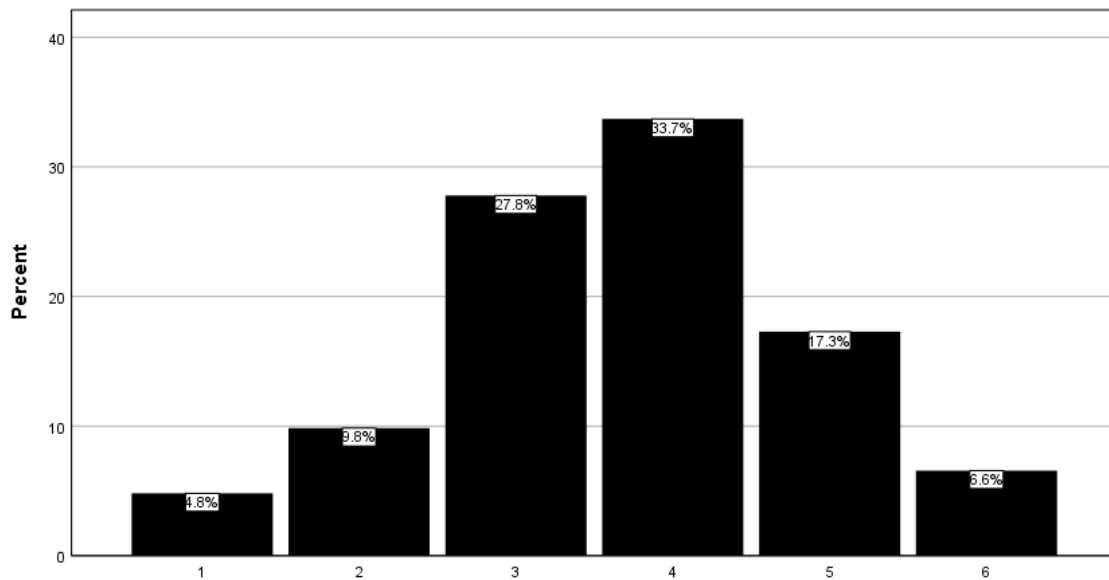


[CMG17] My experiences at SMSU have enabled me to plan or help implement an initiative that improves the community.

(1=Strongly Disagree; 6=Strongly Agree)

N	Valid	457
	Missing	3
Mean		3.68
Std. Deviation		1.202

		Frequency	Percent	Valid Percent
Valid	1	22	4.8	4.8
	2	45	9.8	9.8
	3	127	27.6	27.8
	4	154	33.5	33.7
	5	79	17.2	17.3
	6	30	6.5	6.6
	Total	457	99.3	100.0
Missing		3	.7	
Total		460	100.0	

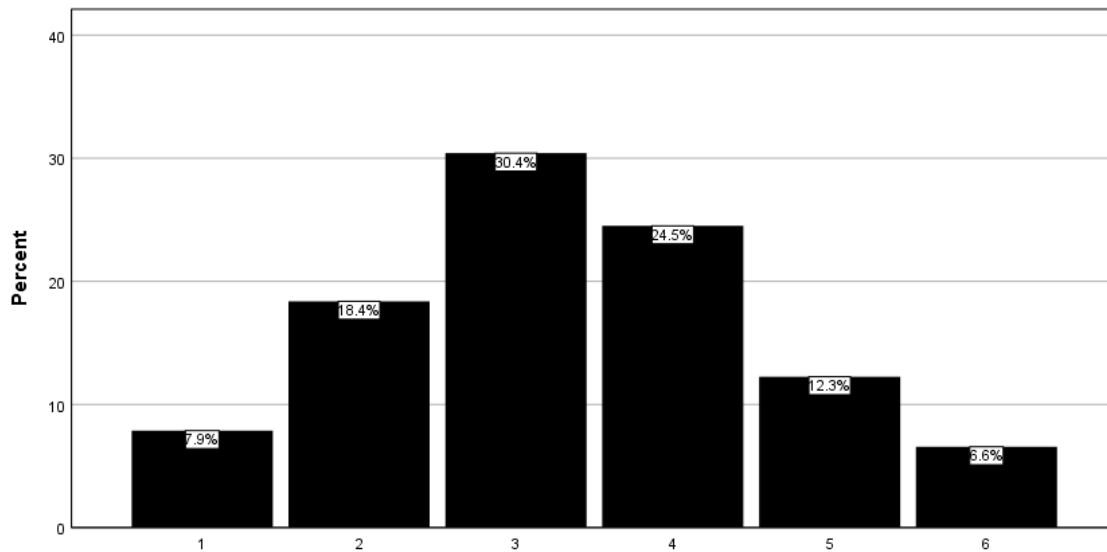


[CMG18] My experiences at SMSU have helped me realize that I prefer to work in settings in which I interact with people who are very different from me.

(1=Strongly Disagree; 6=Strongly Agree)

N	Valid	457
	Missing	3
Mean		3.35
Std. Deviation		1.307

		Frequency	Percent	Valid Percent
Valid	1	36	7.8	7.9
	2	84	18.3	18.4
	3	139	30.2	30.4
	4	112	24.3	24.5
	5	56	12.2	12.3
	6	30	6.5	6.6
	Total		457	99.3
Missing		3	.7	
Total		460	100.0	

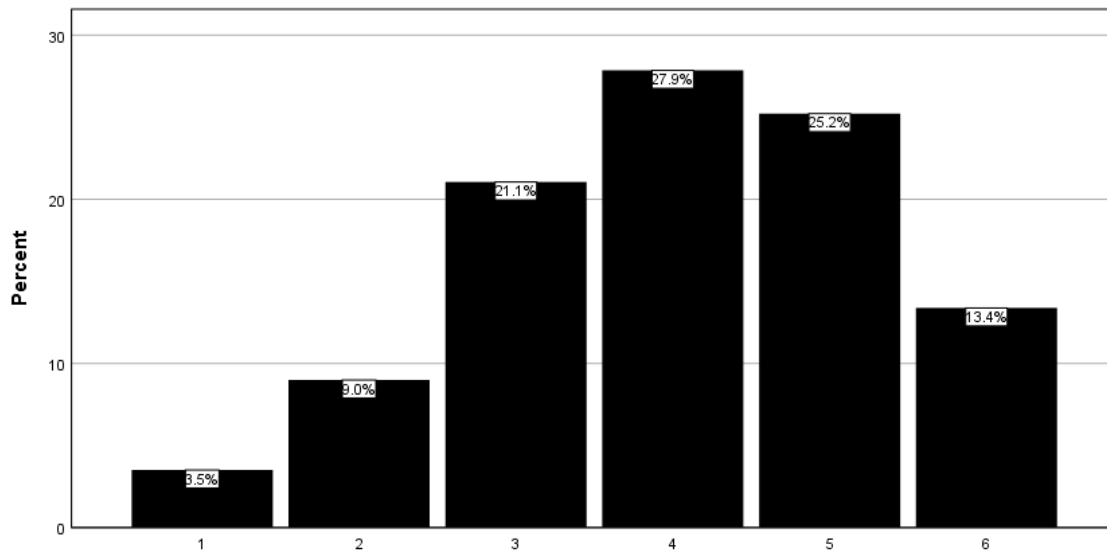


[CMG19] Because of the experiences I have had at SMSU, I feel a deep conviction in my career goals to achieve purposes beyond my own self-interest.

(1=Strongly Disagree; 6=Strongly Agree)

N	Valid	456
	Missing	4
Mean		4.02
Std. Deviation		1.295

		Frequency	Percent	Valid Percent
Valid	1	16	3.5	3.5
	2	41	8.9	9.0
	3	96	20.9	21.1
	4	127	27.6	27.9
	5	115	25.0	25.2
	6	61	13.3	13.4
	Total	456	99.1	100.0
Missing		4	.9	
Total		460	100.0	

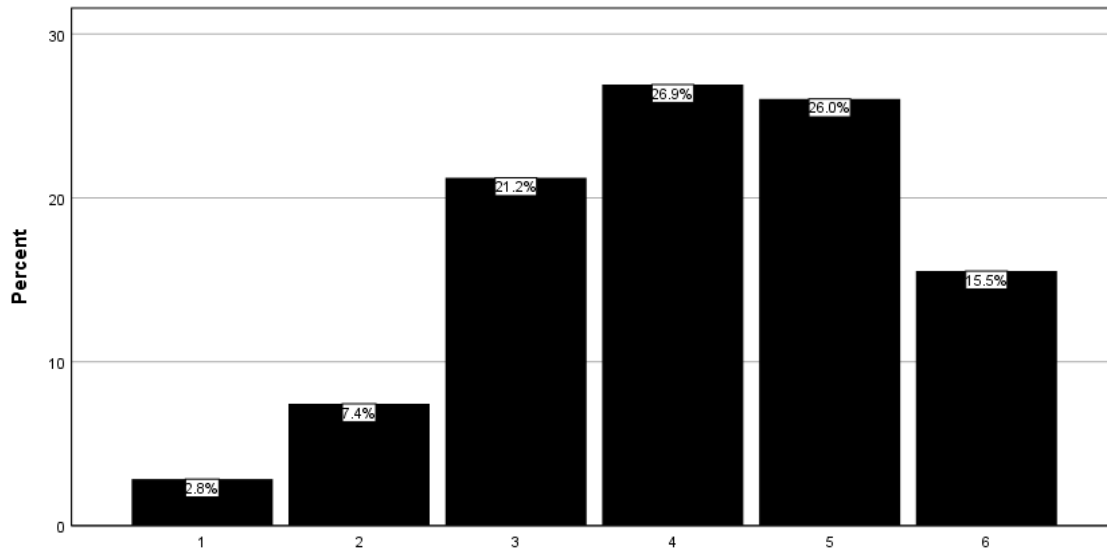


[CMG20] My experiences at SMSU have helped me develop my ability to respond to others with empathy, regardless of their backgrounds.

(1=Strongly Disagree; 6=Strongly Agree)

N	Valid	457
	Missing	3
Mean		4.12
Std. Deviation		1.279

		Frequency	Percent	Valid Percent
Valid	1	13	2.8	2.8
	2	34	7.4	7.4
	3	97	21.1	21.2
	4	123	26.7	26.9
	5	119	25.9	26.0
	6	71	15.4	15.5
	Total	457	99.3	100.0
Missing		3	.7	
Total		460	100.0	

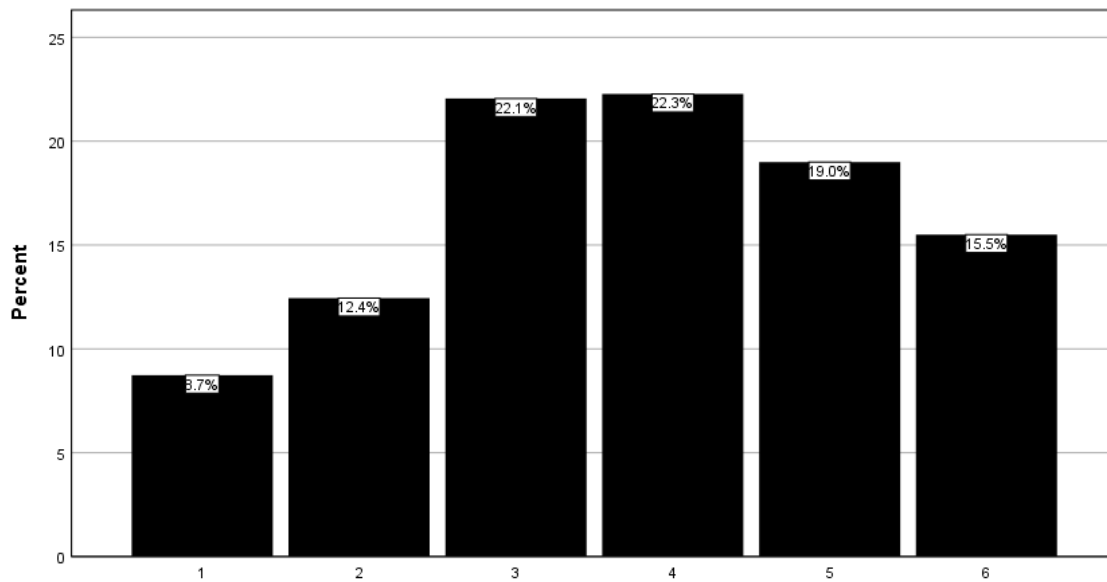


[CMG21] Because of my experiences at SMSU, I intend to be involved in volunteer service after I graduate.

(1=Strongly Disagree; 6=Strongly Agree)

N	Valid	458
	Missing	2
Mean		3.77
Std. Deviation		1.505

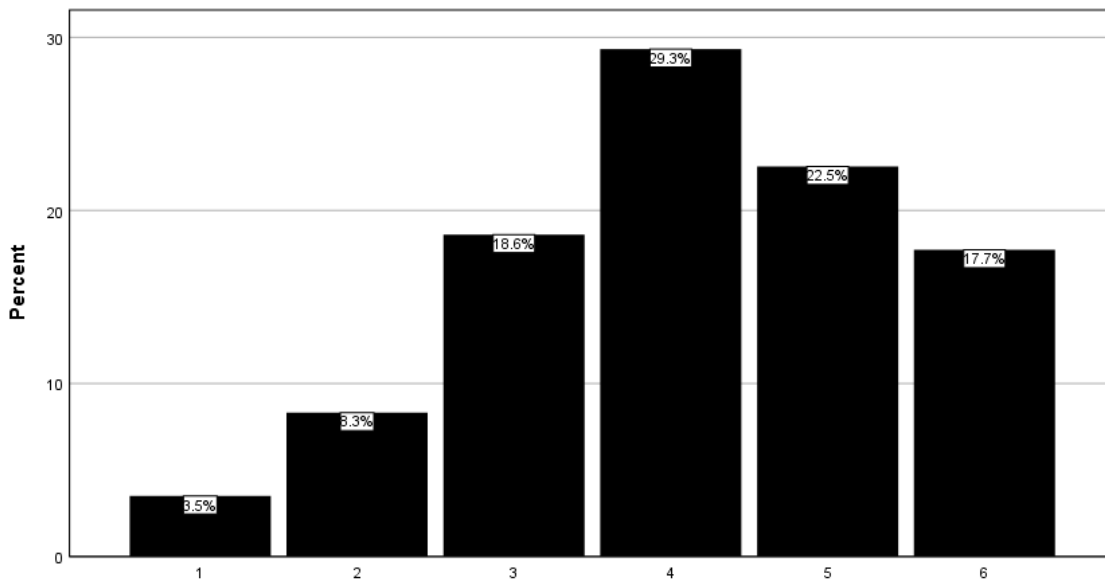
		Frequency	Percent	Valid Percent
Valid	1	40	8.7	8.7
	2	57	12.4	12.4
	3	101	22.0	22.1
	4	102	22.2	22.3
	5	87	18.9	19.0
	6	71	15.4	15.5
	Total		458	99.6
Missing		2	.4	
Total		460	100.0	



[CMG22] My education at SMSU has motivated me to stay up to date on the current political issues in the community.
 (1=Strongly Disagree; 6=Strongly Agree)

N	Valid	457
	Missing	3
Mean		4.12
Std. Deviation		1.325

		Frequency	Percent	Valid Percent
Valid	1	16	3.5	3.5
	2	38	8.3	8.3
	3	85	18.5	18.6
	4	134	29.1	29.3
	5	103	22.4	22.5
	6	81	17.6	17.7
	Total	457	99.3	100.0
Missing		3	.7	
Total		460	100.0	

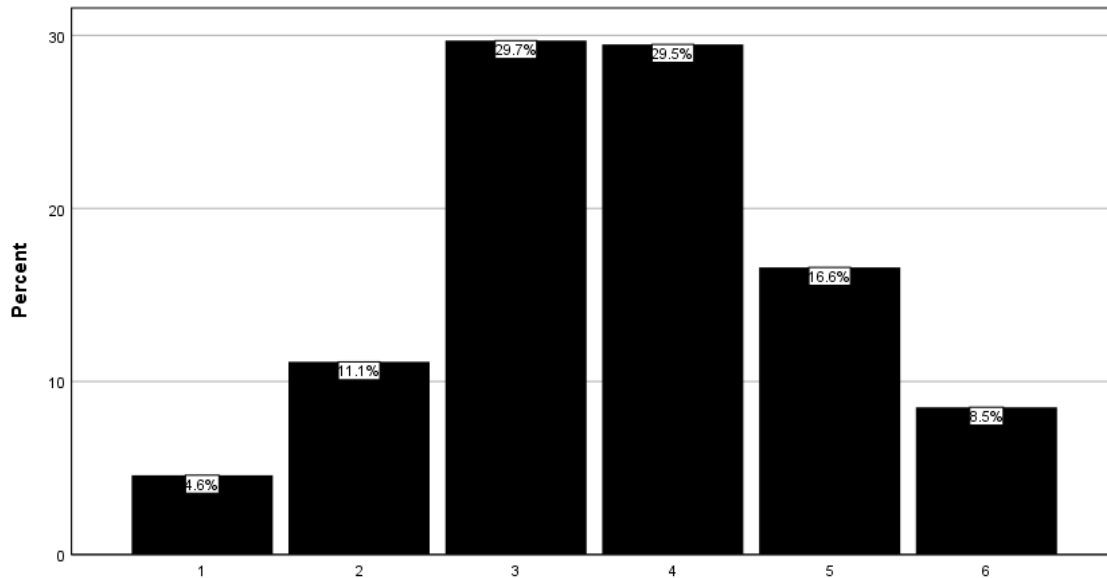


[CMG23] My SMSU education has convinced me that social problems are not too complex for me to help solve.

(1=Strongly Disagree; 6=Strongly Agree)

N	Valid	458
	Missing	2
Mean		3.68
Std. Deviation		1.250

		Frequency	Percent	Valid Percent
Valid	1	21	4.6	4.6
	2	51	11.1	11.1
	3	136	29.6	29.7
	4	135	29.3	29.5
	5	76	16.5	16.6
	6	39	8.5	8.5
	Total	458	99.6	100.0
Missing		2	.4	
Total		460	100.0	

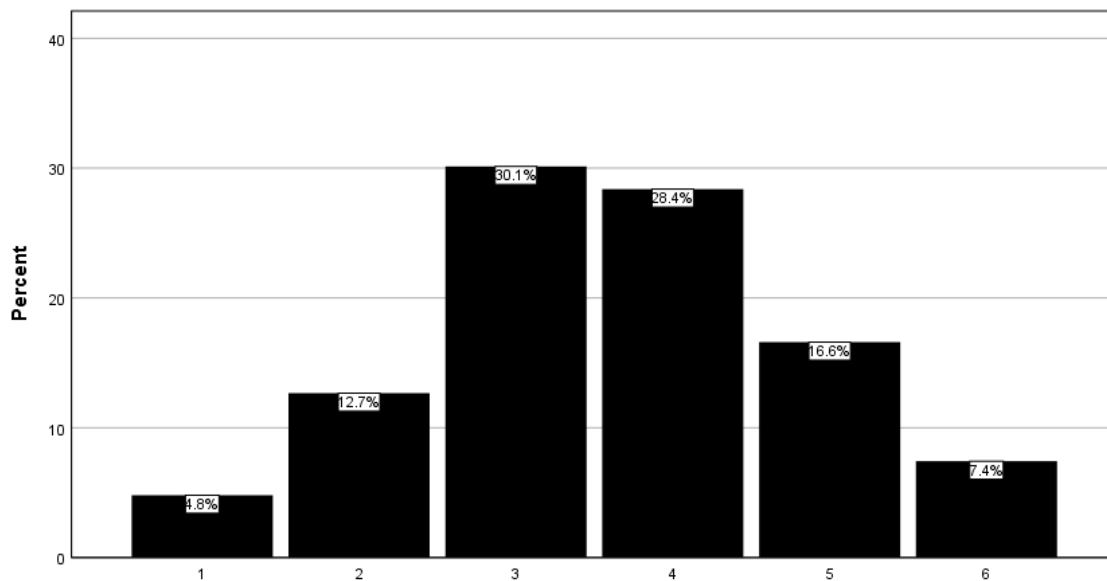


[CMG24] I believe that I have a responsibility to use the knowledge that I have gained at SMSU to serve others.

(1=Strongly Disagree; 6=Strongly Agree)

N	Valid	458
	Missing	2
Mean		3.62
Std. Deviation		1.249

		Frequency	Percent	Valid Percent
Valid	1	22	4.8	4.8
	2	58	12.6	12.7
	3	138	30.0	30.1
	4	130	28.3	28.4
	5	76	16.5	16.6
	6	34	7.4	7.4
	Total		458	99.6
Missing		2	.4	
Total		460	100.0	

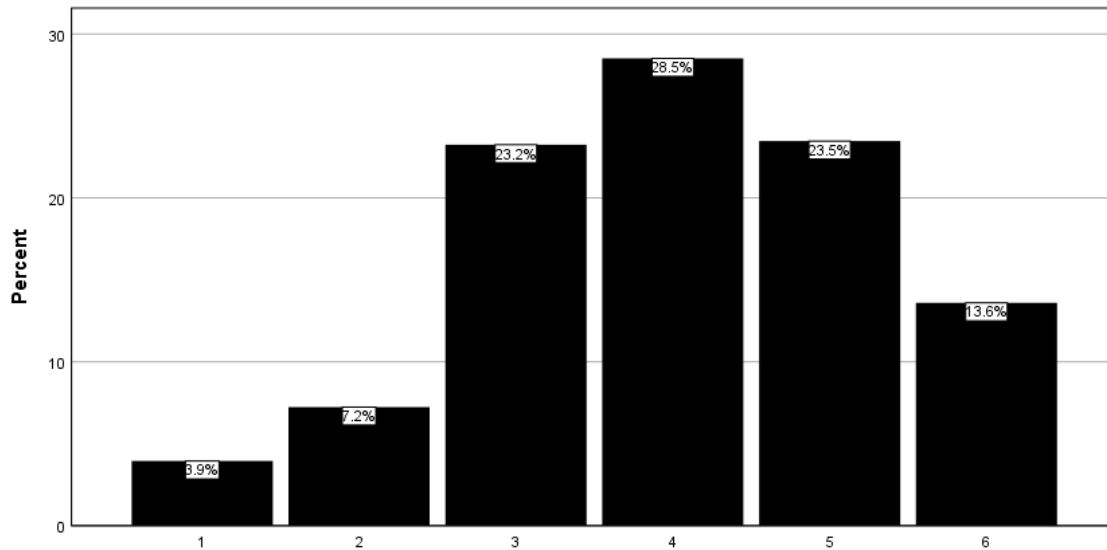


[CMG25] My SMSU education has prepared me to listen to others and understand their perspective on controversial issues.

(1=Strongly Disagree; 6=Strongly Agree)

N	Valid	456
	Missing	4
Mean		4.01
Std. Deviation		1.288

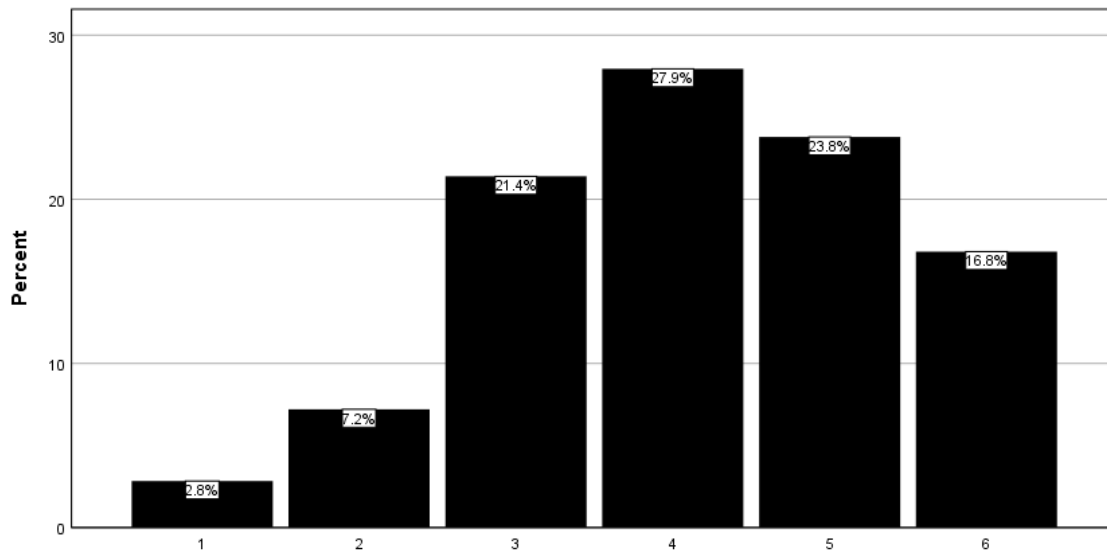
		Frequency	Percent	Valid Percent
Valid	1	18	3.9	3.9
	2	33	7.2	7.2
	3	106	23.0	23.2
	4	130	28.3	28.5
	5	107	23.3	23.5
	6	62	13.5	13.6
	Total	456	99.1	100.0
Missing		4	.9	
Total		460	100.0	



[CMG26] Based on my experiences at SMSU, I would say that the main purposes of work are to improve society through my career.
 (1=Strongly Disagree; 6=Strongly Agree)

N	Valid	458
	Missing	2
Mean		4.13
Std. Deviation		1.286

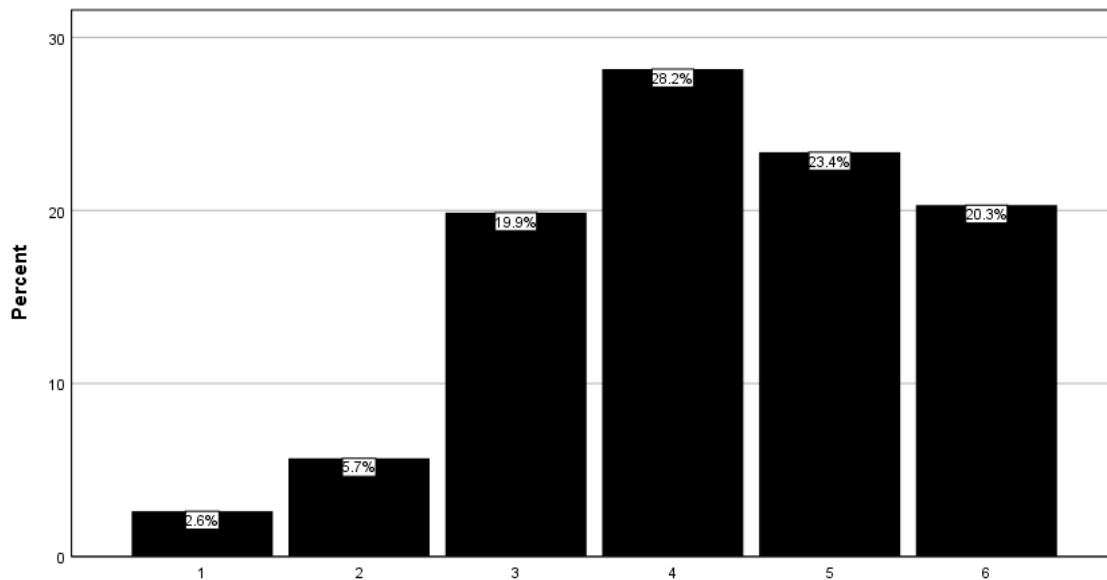
		Frequency	Percent	Valid Percent
Valid	1	13	2.8	2.8
	2	33	7.2	7.2
	3	98	21.3	21.4
	4	128	27.8	27.9
	5	109	23.7	23.8
	6	77	16.7	16.8
	Total		458	99.6
Missing		2	.4	
Total		460	100.0	



[CMG27] As a result of my experiences at SMSU, I want to dedicate my career to improving society.
 (1=Strongly Disagree; 6=Strongly Agree)

N	Valid	458
	Missing	2
Mean		4.25
Std. Deviation		1.284

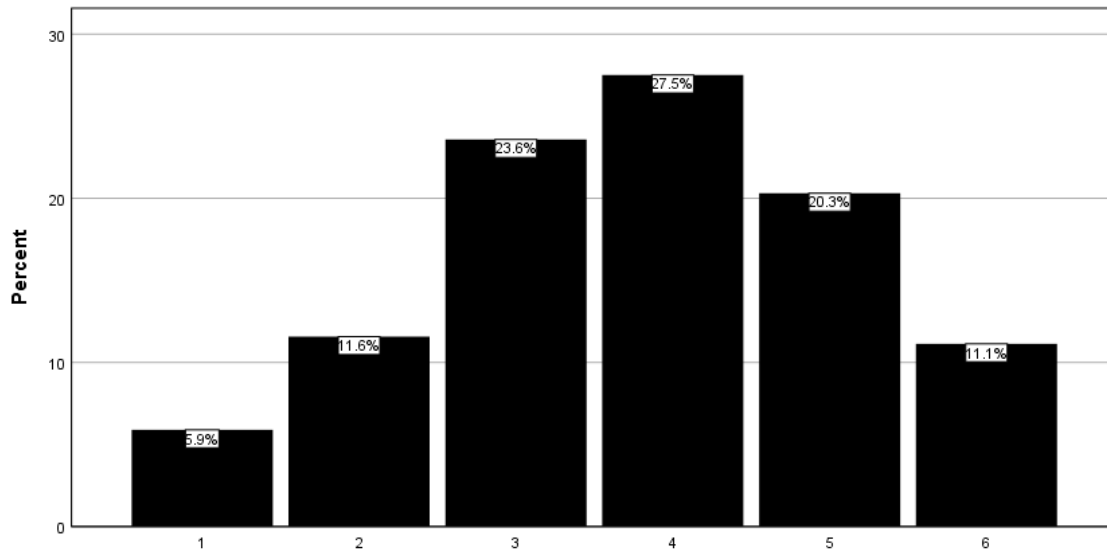
		Frequency	Percent	Valid Percent
Valid	1	12	2.6	2.6
	2	26	5.7	5.7
	3	91	19.8	19.9
	4	129	28.0	28.2
	5	107	23.3	23.4
	6	93	20.2	20.3
	Total		458	99.6
Missing		2	.4	
Total		460	100.0	



[CMG28] After being a student at SMSU, I feel confident that I will be able to apply what I have learned in my classes to solve real problems in society.
 (1=Strongly Disagree; 6=Strongly Agree)

N	Valid	458
	Missing	2
Mean		3.78
Std. Deviation		1.354

		Frequency	Percent	Valid Percent
Valid	1	27	5.9	5.9
	2	53	11.5	11.6
	3	108	23.5	23.6
	4	126	27.4	27.5
	5	93	20.2	20.3
	6	51	11.1	11.1
	Total		458	99.6
Missing		2	.4	
Total		460	100.0	

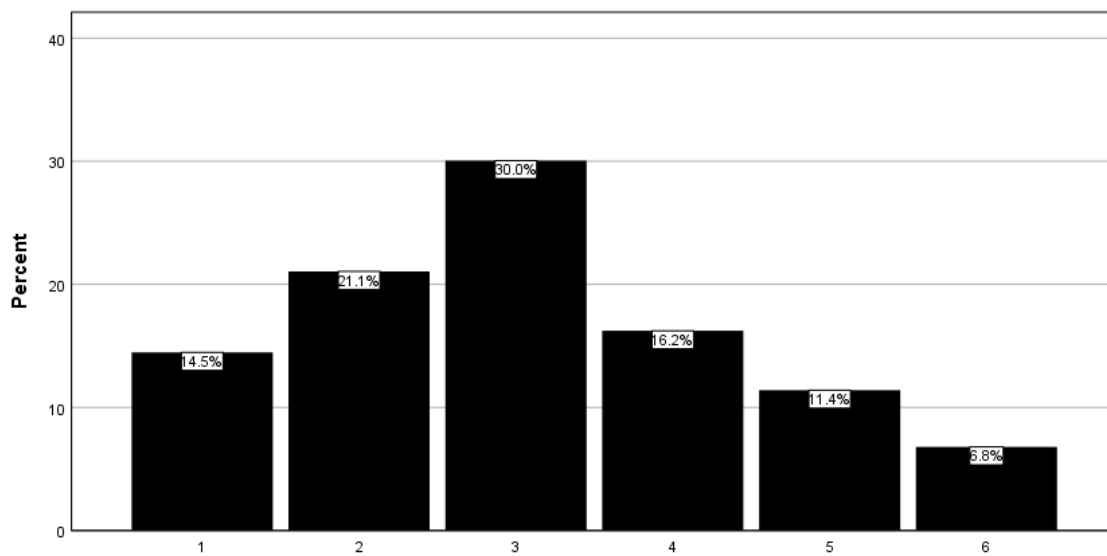


[CMG29] When discussing controversial social issues during my time at SMSU, I have often been able to persuade others to agree with my point of view.

(1=Strongly Disagree; 6=Strongly Agree)

N	Valid	456
	Missing	4
Mean		3.09
Std. Deviation		1.420

		Frequency	Percent	Valid Percent
Valid	1	66	14.3	14.5
	2	96	20.9	21.1
	3	137	29.8	30.0
	4	74	16.1	16.2
	5	52	11.3	11.4
	6	31	6.7	6.8
	Total	456	99.1	100.0
Missing		4	.9	
Total		460	100.0	

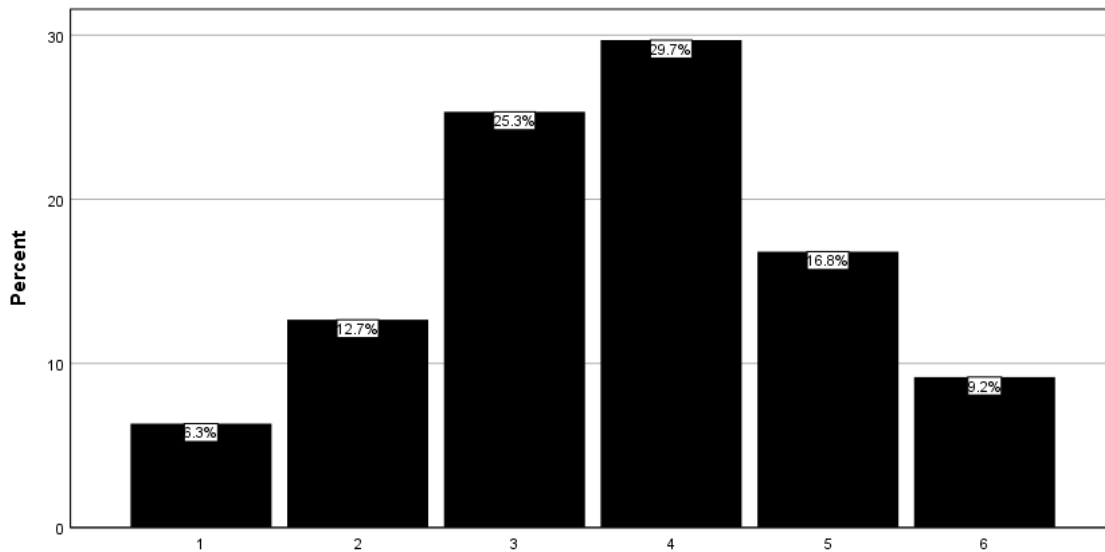


[CMG30] My SMSU experiences have helped me develop a sense of who I am, which now includes a sincere desire to be of service to others.

(1=Strongly Disagree; 6=Strongly Agree)

N	Valid	458
	Missing	2
Mean		3.66
Std. Deviation		1.323

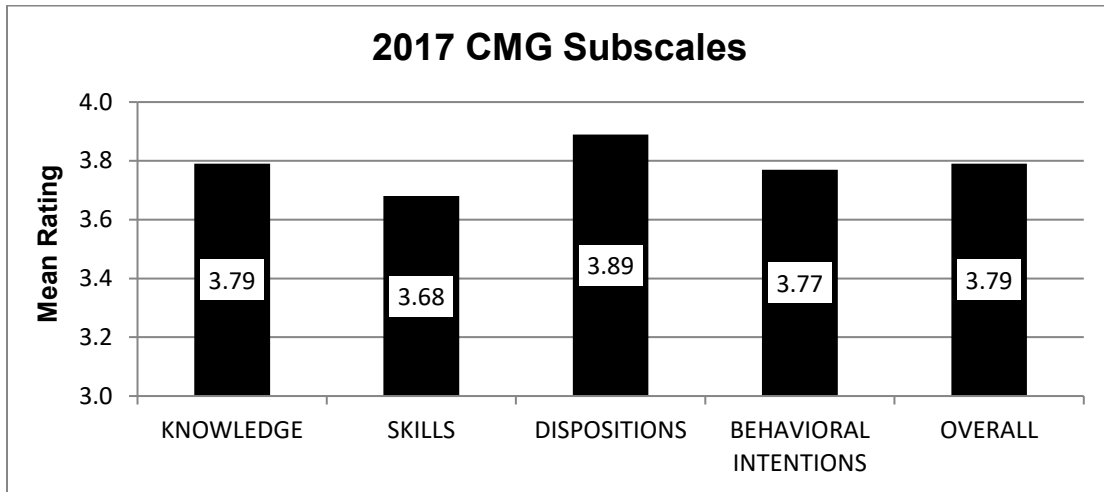
		Frequency	Percent	Valid Percent
Valid	1	29	6.3	6.3
	2	58	12.6	12.7
	3	116	25.2	25.3
	4	136	29.6	29.7
	5	77	16.7	16.8
	6	42	9.1	9.2
	Total	458	99.6	100.0
Missing		2	.4	
Total		460	100.0	



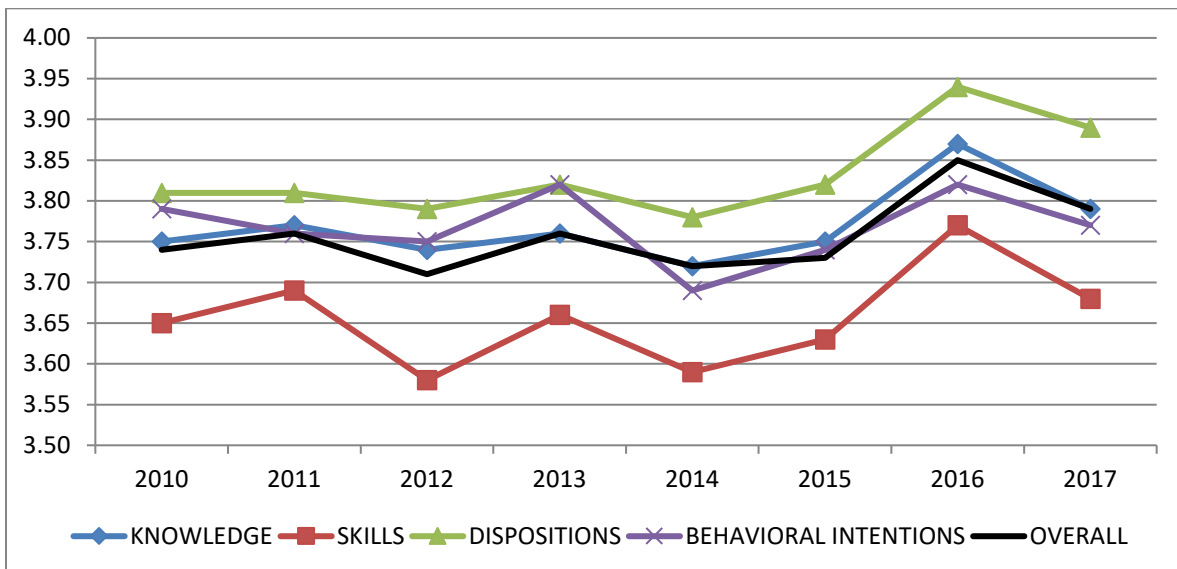
CMG Subscale Scores

Summary of Ratings and Trend Analysis

(1=Strongly Disagree; 6=Strongly Agree)



Subscale	2010	2011	2012	2013	2014	2015	2016	2017
KNOWLEDGE	3.75	3.77	3.74	3.76	3.72	3.75	3.87	3.79
SKILLS	3.65	3.69	3.58	3.66	3.59	3.63	3.77	3.68
DISPOSITIONS	3.81	3.81	3.79	3.82	3.78	3.82	3.94	3.89
BEHAVIORAL INTENTIONS	3.79	3.76	3.75	3.82	3.69	3.74	3.82	3.77
OVERALL	3.74	3.76	3.71	3.76	3.72	3.73	3.85	3.79



Components for each subscale are presented on subsequent pages. The Behavioral Intentions subscale has no components.

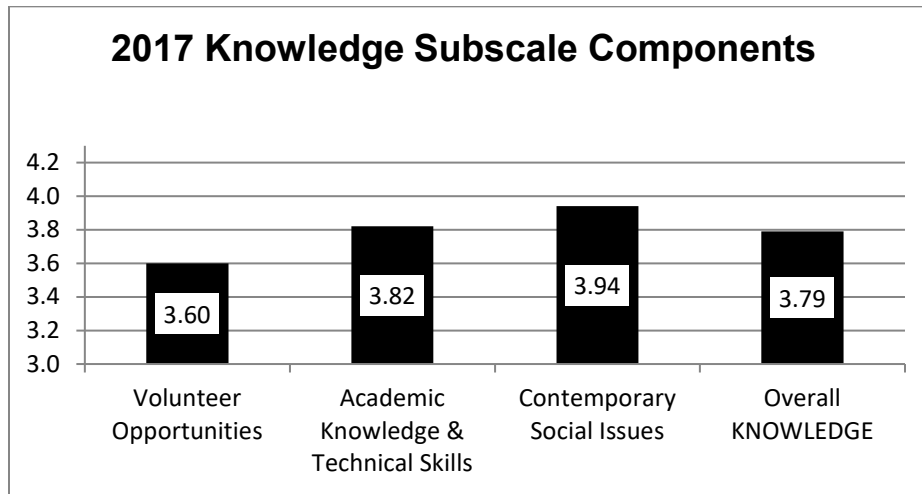
2017 Knowledge Subscale

(1=Strongly Disagree; 6=Strongly Agree)

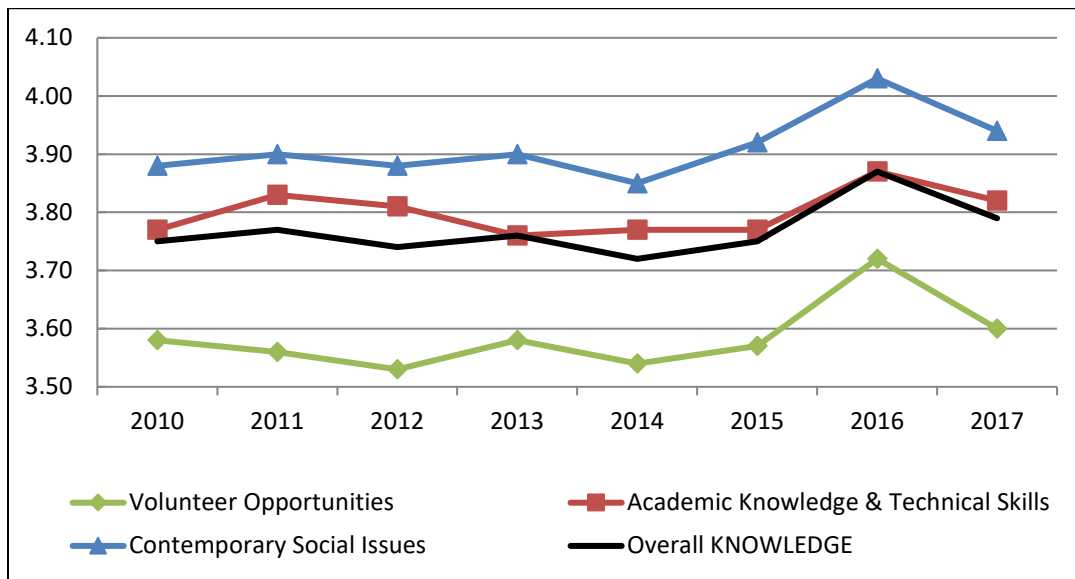
Survey Item	Mean
Volunteer Opportunities	
[CMG1] My experiences at SMSU have helped me know a lot about opportunities to become involved in the community.	3.44
[CMG6] Based on my experience at SMSU, I would say that most other students know less about community organizations and volunteer opportunities than I do.	3.35
[CMG13] Through my experiences at SMSU, I am very familiar with clubs and organizations that encourage and support community involvement for college students.	4.01
Academic Knowledge and Technical Skills	
[CMG4] My SMSU education has given me the professional knowledge and skills that I need to help address community issues.	3.99
[CMG17] My experiences at SMSU have enabled me to plan or help implement an initiative that improves the community.	3.68
[CMG28] After being a student at SMSU, I feel confident that I will be able to apply what I have learned in my classes to solve real problems in society.	3.78
Contemporary Social Issues	
[CMG3] My experiences at SMSU have prepared me to write a letter to the newspaper or community leaders about a community issue.	3.55
[CMG11] My education at SMSU has made me aware of a number of community issues that need to be addressed.	4.16
[CMG22] My education at SMSU has motivated me to stay up to date on the current political issues in the community	4.12

Knowledge Subscale Trend Analysis

(1=Strongly Disagree; 6=Strongly Agree)



Subscale Components	2010	2011	2012	2013	2014	2015	2016	2017
Volunteer Opportunities	3.58	3.56	3.53	3.58	3.54	3.57	3.72	3.60
Academic Knowledge and Technical Skills	3.77	3.83	3.81	3.76	3.77	3.77	3.87	3.82
Contemporary Social Issues	3.88	3.90	3.88	3.90	3.85	3.92	4.03	3.94
Overall KNOWLEDGE	3.75	3.77	3.74	3.76	3.72	3.75	3.87	3.79



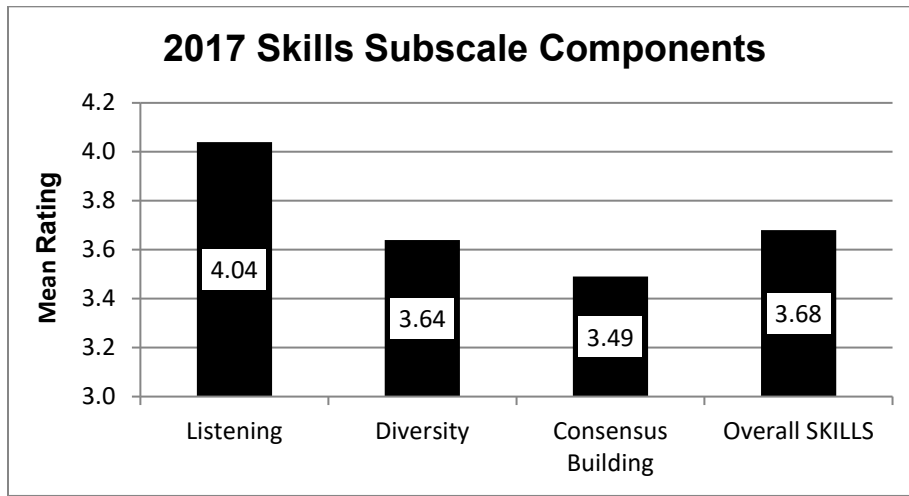
2017 Skills Subscale

(1=Strongly Disagree; 6=Strongly Agree)

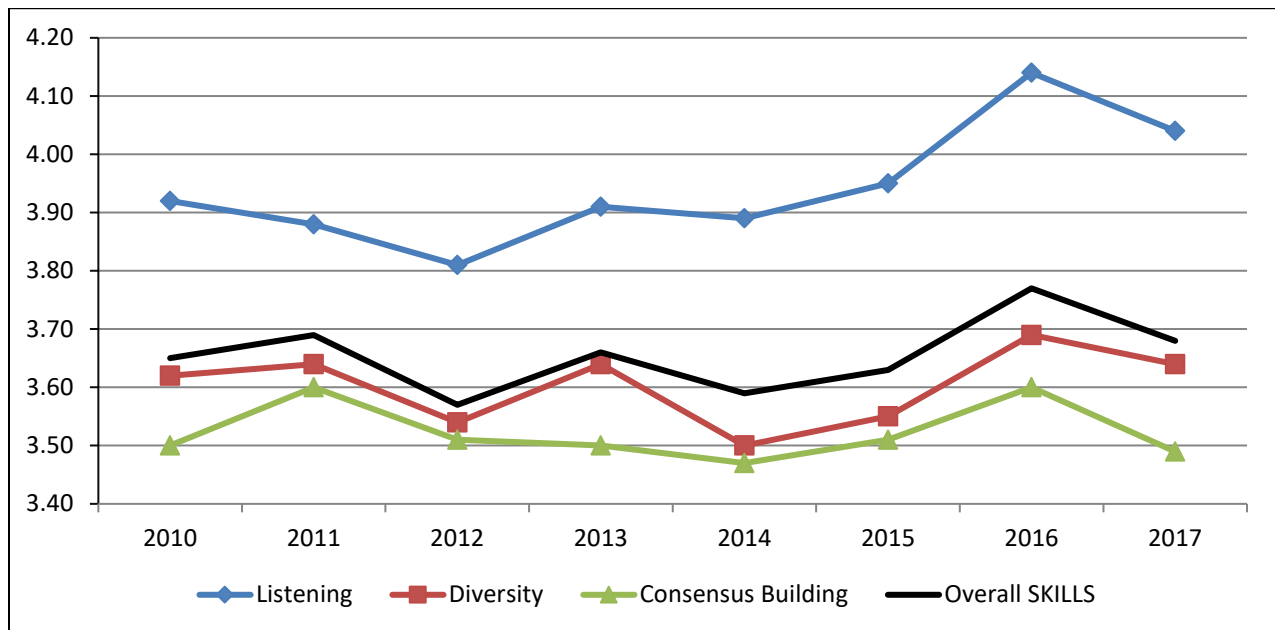
Survey Item	Mean
Listening	
[CMG5] My experiences at SMSU have helped make me a good listener, even when peoples' opinions are different from mine.	4.08
[CMG25] My SMSU education has prepared me to listen to others and understand their perspective on controversial issues.	4.01
Diversity	
[CMG9] My SMSU education has helped me appreciate how my community is enriched by having some cultural or ethnic diversity.	3.43
[CMG18] My experiences at SMSU have helped me realize that I prefer to work in settings in which I interact with people who are different from me.	3.35
[CMG20] My experiences at SMSU have helped me develop my ability to respond to others with empathy, regardless of their backgrounds.	4.12
Consensus Building	
[CMG2] As a result of my experiences at SMSU, other students who know me well would describe me as a person who can discuss controversial social issues with civility and respect.	2.95
[CMG10] My experiences at SMSU have helped me realize that when members of my group disagree on how to solve a problem, I like to try to build consensus.	4.44
[CMG29] When discussing controversial social issues at SMSU, I have often been able to persuade others to agree with my point of view.	3.09

Skills Subscale Trend Analysis

(1=Strongly Disagree; 6=Strongly Agree)



Subscale Components	2010	2011	2012	2013	2014	2015	2016	2017
Listening	3.92	3.88	3.81	3.91	3.89	3.95	4.14	4.04
Diversity	3.62	3.64	3.54	3.64	3.50	3.55	3.69	3.64
Consensus Building	3.50	3.60	3.51	3.50	3.47	3.51	3.60	3.49
Overall SKILLS	3.65	3.69	3.57	3.66	3.59	3.63	3.77	3.68



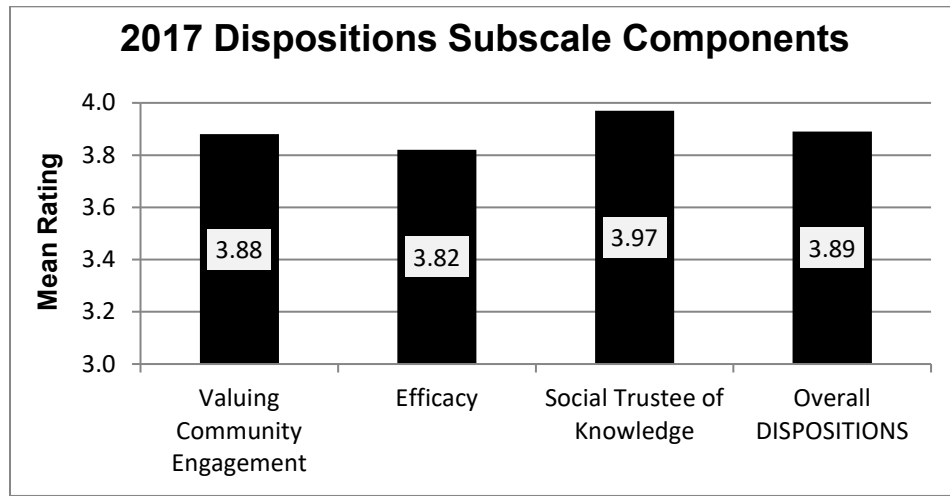
2017 Dispositions Subscale

(1=Strongly Disagree; 6=Strongly Agree)

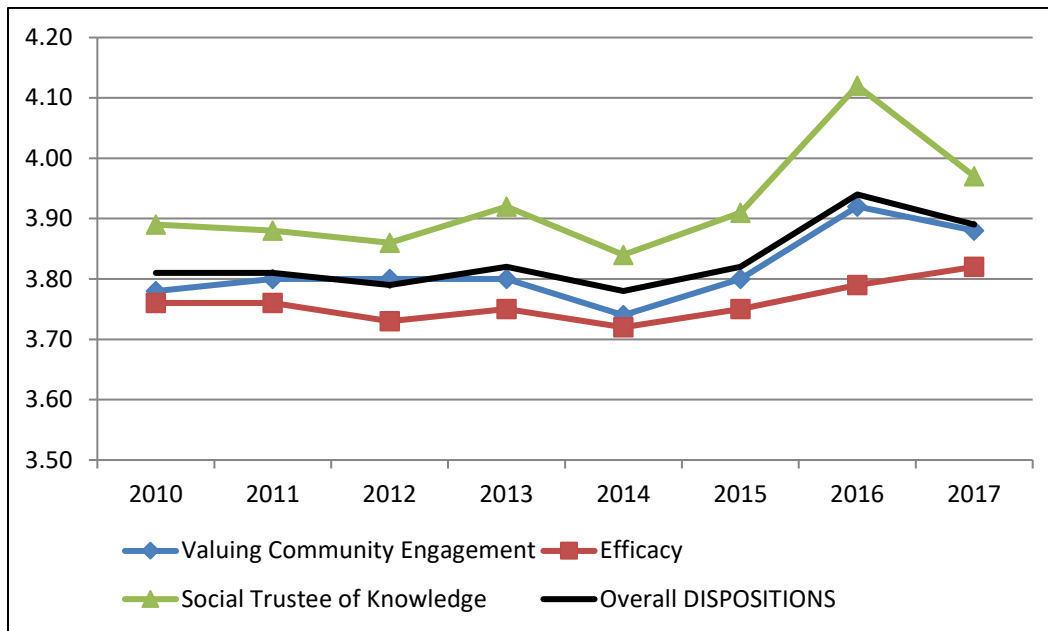
Survey Item	Mean
Valuing Community Engagement	
[CMG7] My experiences at SMSU have helped me realize that it is important for me to vote and be politically involved.	3.40
[CMG14] My SMSU experiences helped me to realize that I like to be involved in addressing community issues.	4.34
[CMG26] Based on my experiences at SMSU, I would say that the main purposes of work are to improve society through my career.	4.13
[CMG30] My SMSU experiences have helped me develop my sense of who I am, which now includes a sincere desire to be of service to others.	3.66
Efficacy	
[CMG8] My education at SMSU has increased my confidence that I can contribute to improving life in my community.	3.74
[CMG15] Because of my experiences at SMSU, I believe that having an impact on community problems is within my reach.	4.05
[CMG23] My SMSU education has convinced me that social problems are <u>not</u> too complex for me to help solve.	3.68
Social Trustee of Knowledge	
[CMG19] Because of the experiences I had at SMSU, I feel a deep conviction in my career goals to achieve purposes that are beyond my own self-interest.	4.02
[CMG24] I believe that I have a responsibility to use the knowledge I have gained at SMSU to serve others.	3.62
[CMG27] As a result of my experiences at SMSU, I want to dedicate my career to improving society.	4.25

Dispositions Subscale Trend Analysis

(1=Strongly Disagree; 6=Strongly Agree)



Subscale Components	2010	2011	2012	2013	2014	2015	2016	2017
Valuing Community Engagement	3.78	3.80	3.80	3.80	3.74	3.80	3.92	3.88
Efficacy	3.76	3.76	3.73	3.75	3.72	3.75	3.79	3.82
Social Trustee of Knowledge	3.89	3.88	3.86	3.92	3.84	3.91	4.12	3.97
Overall DISPOSITIONS	3.81	3.81	3.79	3.82	3.78	3.82	3.94	3.89



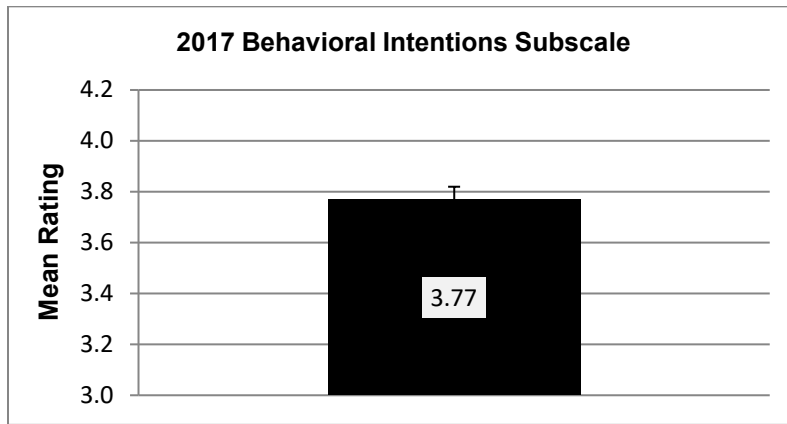
2017 Behavioral Intentions Subscale

(1=Strongly Disagree; 6=Strongly Agree)

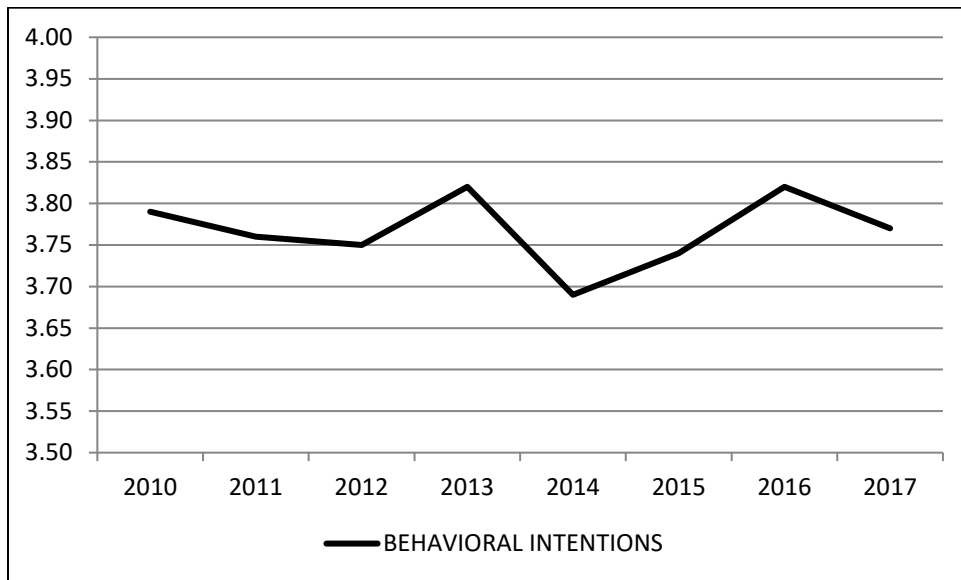
Survey Item	Mean
[CMG12] My experiences at SMSU have increased my motivation to participate in advocacy or political action groups after I graduate.	3.57
[CMG16] Because of my SMSU experiences, I plan to stay current with the local and national news after I graduate.	3.98
[CMG21] Because of my experiences at SMSU, I intend to be involved in volunteer service after I graduate.	3.77

Behavioral Intentions Subscale Trend Analysis

(1=Strongly Disagree; 6=Strongly Agree)



Subscale	2010	2011	2012	2013	2014	2015	2016	2017
BEHAVIORAL INTENTIONS	3.79	3.76	3.75	3.82	3.69	3.74	3.82	3.77



Section IV: Responsibility and Commitment

Section IV of the Civic Engagement Survey consisted of a single scale item and an open-ended prompt regarding students' feelings of responsibility and commitment to engage in civic engagement after leaving SMSU.

The scale item in this section of the survey was preceded by the following prompt:

Please indicate whether you agree or disagree with the following. 1= Strongly Disagree 6= Strongly Agree

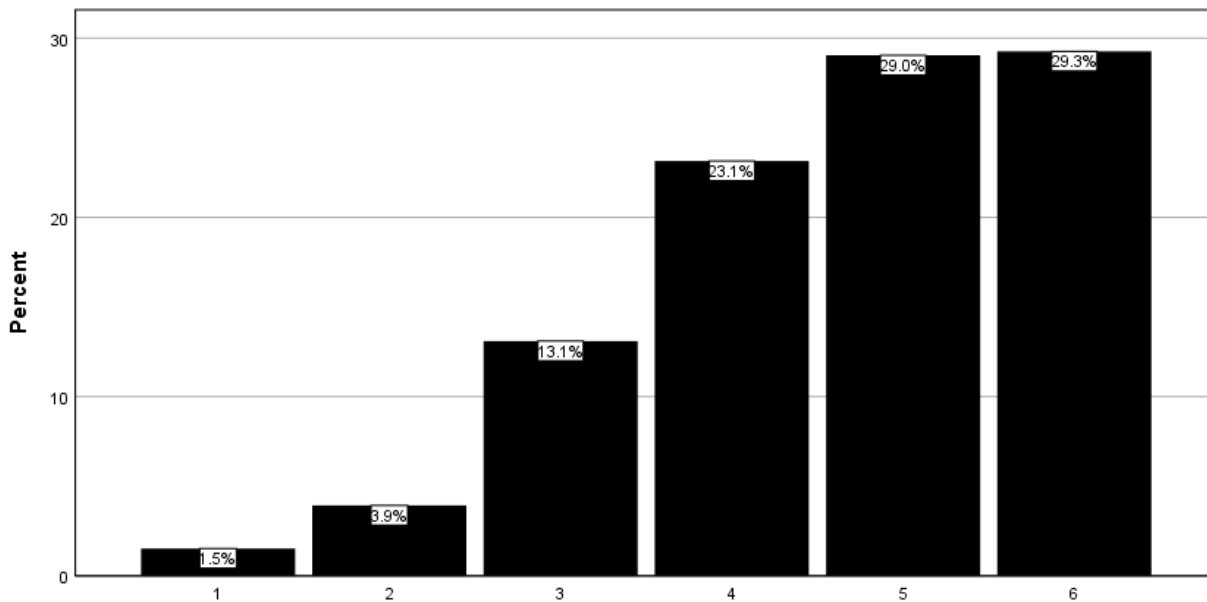
Data for the scale item are presented here along with a trend analysis covering the last seven academic years.

An additional prompt was included at the end of the survey to allow students to make other general comments.

I have the responsibility and commitment to use the knowledge and skills I have gained through my education to collaborate with others to improve society.
 (1=Strongly Disagree; 6=Strongly Agree)

N	Valid	458
	Missing	2
Mean		4.62
Std. Deviation		1.227

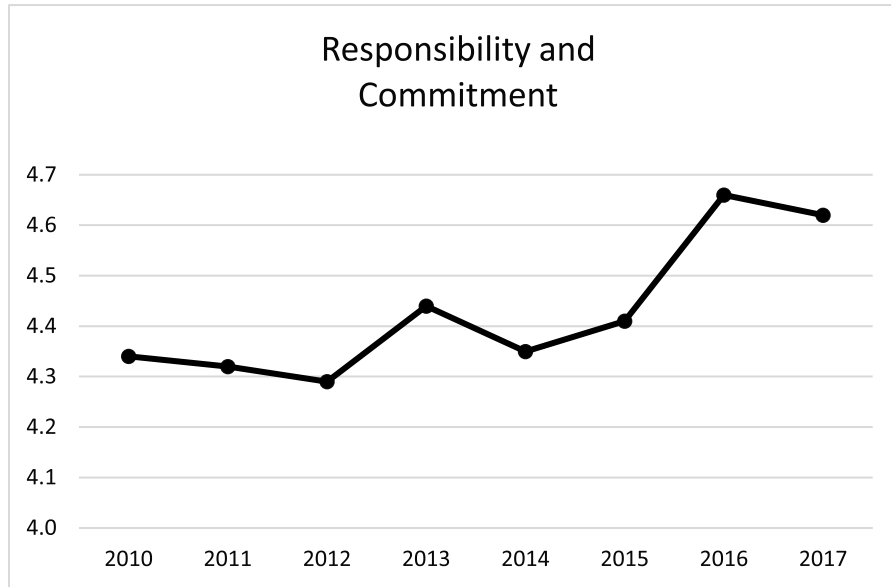
		Frequency	Percent	Valid Percent
Valid	1	9	1.8	1.8
	2	16	3.1	3.2
	3	58	11.4	11.7
	4	118	23.2	23.8
	5	145	28.5	29.2
	6	150	29.5	30.2
	Total	496	97.6	100.0



Responsibility and Commitment Trend Analysis

(1=Strongly Disagree; 6=Strongly Agree)

	2010	2011	2012	2013	2014	2015	2016	2017
Mean	4.34	4.32	4.29	4.44	4.35	4.41	4.66	4.62



Please describe the ways in which you agree or disagree with this statement and provide a clear explanation of your opinions.

Participant Responses
I owe nobody anything in life, I only owe myself happiness and effort in whatever it is of my choosing whether that is using my education or not.
I agree with what I think fit my experience during the time I have been a student at SMSU.
I agree with this statement, because knowledge is power, and the education we receive should be used to help others in order to help ourselves as a whole.
As members of society, it is an unspoken responsibility that we improve the world we live in today and the world we will live in tomorrow. I've never had a problem with understanding this concept, nor have I had a problem committing to it. I now feel like my educational background will help me to help others, whether singular or society as a whole.
I have been in the workforce for many years. My classes have helped me to enhance my skills and knowledge to articulate what I want to get across. I am not very politically involved but can see how politics influence. I also serve my community in other ways other just politically but not through the school it has been volunteer work through my community where I live and work. I volunteer through work.
SMSU has prepared me for a future as a teacher in the education world. Not only did I gain collaboration skills, but I also gained knowledge about how to apply my skills to improve my society.
I will be able to increase the lifespan of the employees I take care of for this mortgage company, therefore, increasing their happiness and productivity. Which will cause a snowball effect in their family lives?
I am currently working and have worked with people in poverty for the last 21 years. I am a member of the DELETED , Actively attend and serve as a member at the DELETED .
I have learned a lot in my field to be able to communicate well with others and know what they would like in return.
Made me have a broader view of management
I agree with this statement because working as a group is important and as a distance learner, it helped to rely on others for help when I needed it. I was also able to give my knowledge and skills set to others who may have needed it.
SMSU was a friendly environment which helps students learn how to collaborate.
SMSU taught me deadlines, prioritizing, collaborating with people from all sorts of backgrounds in order to get the job done. These are life skills that are priceless and beyond valuable throughout life
Being very conservative I have come to the conclusion that people who do not agree with me do not like to hear what I have to say.
It is important to get involved and help the community around you
I have based these agreements on the lab experiences that I have had through SMSU.
By contributing to groups within the education community I can make a difference with my views about the bettering education towards children.
I think that if something comes up that I believe strongly enough in then I would be able to help out.
Being a student at SMSU has made me realize there needs to be more diversity or that people need to get out and experience more than what they would find in a rural area. I've learned how to deal with others who disagree with me and how to communicate problems that I may have with another in order to collaborate and solve problems together that we can both agree on.

Participant Responses
I went to school to be an DELETED . I want to use the knowledge and skills that I gained from my schooling to better the lives of my future students. These students are the future to the world, and by incorporating technology, understanding how students learn and adhering to it, motivating the students and involving parents will help improve society's future.
I agree with the statement above because, throughout the course of my education here at SMSU, I have learned values that I believe are important to show society. I learned a lot about myself through my college years and I am eager to take what I have learned in my major and put in into action.
I think that SMSU has reconfirmed for me that even though people won't always agree, it doesn't mean that either person is wrong. We need to hear the person's opinion and work together by combining ideas and forming a better idea out of the collaboration.
The knowledge I have obtained through SMSU and my 21 years of experience working at DELETED has given me the confidence to work hard for the children and families that I serve.
We all live in a society and it is imperative that we all work together for the betterment of society. That's how a country starts to develop when the people living in it are willing to contribute their time and knowledge for the prosperity and enhancement which ultimately leads to the enrichment of the diverse community where people of different backgrounds with different ideas, perspective and techniques come together and work together as one to lead the nation on the path of success. Hence, It is my duty to enlighten others with the knowledge that I have acquired during these years here at SMSU.
Here at SMSU being a part of the DELETED club has helped me see that it is great to be a part of something that helps the community.
Working with groups and working with people who hold different viewpoints really help me to understand others and know that my point of view isn't the only point of view.
I am a non-traditional, returning student these questions do not relate to me as I have already been doing the majority of these items for my adult life. SMSU did not help develop those in me, SMSU was an institution that helped me earn a degree to continue with my passions. :)
I agree that holding a DELETED will enable me to enrich my community. I will be able to provide support to those in need. I will also be able to accept others and have empathy for others who are less fortunate than me.
I just feel that it is important to stay active in the community to help create a more positive community.
The knowledge and skills I have gained through my education were enhanced by some of my professors at SMSU. However, other professors were so incompetent that they actually reduced my knowledge and skills. I don't understand how there can be such good professors and such bad professors in the same school. Some of the professors at SMSU are so awful that they ought to get a new career, but they won't because they are using this one to glide through life at the expense of their students, and thereby, at the expense of the future of America.
As an DELETED major, I have the chance to touch a lot of lives and collaborate with different people. I want to make society a better place to be and also make an impact on each student.
I have developed a strong sense of skills to aid in my collaborative skills. I have learned that connecting with society is essential and can be achieved through any job in a specific community.
I do have the knowledge that will help to improve society in my community in which the majority are low-income families and children needing an accountable person who will help and encourage families and children to be the best they can. Helping them to find resources needed to complete their goals one day at a time.
We all have a responsibility to collaborate and improve society, to include diversity and inclusion for all.

Participant Responses
I agree with this statement because societal improvement is important. It's important to use my education to work with others and help others or the betterment of the community.
I have spent time and money here to earn a degree, I will make sure to put it to use to help others.
I am dedicated to educating young children in my community to the best of my ability.
I feel that people, such as myself, with the abilities to help others in their community (and society as a whole), should do so when able. In the future, I hope (at some point) to be able to put my education to use improving the lives of others, by whatever means are available at that point in time.
I intend to use my knowledge to benefit both myself and future employers which should, in turn, help the community.
I believe that every member of a society has an obligation to improve that society.
Taking DELETED courses has allowed me to look at issues from both sides and come up with a solution
I think it is important to share and use the skills an individual gains through both academic and life skills to improve society in any way they can.
I agree that those who have had the ability to go to a secondary school should use it to the best of their ability as well as share it with others. Not everyone is as lucky as us who get to have a liberal education where we learn not just one side of the whole story, but the whole concept.
Everything you learn throughout your whole life may impact how you view the future.
I intend to use the education I gained from SMSU in my field to help improve the medical field and help save more people's lives.
Improving society can mean just getting information out there. I think informing society about issues, regardless of what they are, can have a huge impact. Talking to people, networking, and making everyone feel useful can help society positively.
SMSU has not taught me the perspective and tools that I have gained through my field experiences. My field experiences have taught me that. However, the coursework was simply a necessary hoop to jump through to get my degree.
I have learned so many things from my major and I want to be able to use what I have learned to help others. I have already shown interest in this when I took my internship last summer and I want to continue after I graduate.
Many problems in the world have simple solutions that we overlook, and my education has given me the awareness to often look for the common solution to better help society. Working with others and expressing these motions could also help others identify the trends in solving such problems and hopefully have a cascading effect for improvement.
The DELETED courses have shown me that it is necessary to work with others effectively to teach others.
I agreed because I have the responsibility and the commitment to use my knowledge and skills that I have gained through my education to collaborate with others to improve society
Have any sort of higher education enables a person to think in a more rational matter. Have the ability to assess societal issue is a major step in generating change.
I was given the opportunity to pursue a Bachelor of Science degree in two programs that I'm truly passionate about at a university of high credibility. Throughout my four years here at Southwest as a student-athlete, I have endured many challenges and great memories which are opportunities that not everyone in this world are given. I feel like I have the duty and responsibility to give back to not only my friends and family that helped me get to this point in my life but also to the greater society and those individuals who may never know what it's like to be in my shoes.

Participant Responses
I agree with this statement without education society will not improve. With my education that I received at a university level, I will plan on being a well-rounded individual. I plan to help improve my community and schools for the next future in society.
I agree because it is my duty to commit to society as an educator.
I agree because being an educator it is important to be able to collaborate with others.
I believe that since I have the privilege and the ability to gain an education that I have the power and obligation to help to improve the society around me.
I will work with my students and their families if they need extra services.
I have a passion for education and I am working towards my bachelor's degree in DELETED . With this, the classes and education I have received will help me guide the students I teach and the adults I work alongside, to be the best they can be each and every day.
There are many different ways this could be done. The more people are educated and know more about a certain issue. The more people that can get involved to help solve this issue. For example, the issue of water resources. If you educated people on why not having water in certain areas of the world and why we need to help. The more people will know and the more they will be willing to help to end this issue.
I believe the education I received from SMSU has helped me become more confident with the knowledge of topics. I feel if I needed to apply the education to society I would have a great grasp to do so.
As a community and even has a nation. We have to do what is best for our nation, being selfish and acting in your own self-interest is not going to make the world a better place. We have to think not only about this generation but the future generation as well. With that being said, we need to work outside our own self-interest and continue to Make America the greatest nation.
I feel like I have developed qualities that have allowed me to use the skills I have gained at SMSU to improve society. Through learning, I have discovered that education is vital to the success of a society, and SMSU strives to help every student enhance their mind in hopes of preparing them for the future.
Society is not going to grow from me if I don't use my education (full or parts).
SMSU has to help me realize what this world is doing and the issues that will arise and how to voice my opinion so that I am heard.
Because of the knowledge and skills, I gained during my education I can now make an informative decision as well as take the appropriate steps to complete a task or become involved in any social issue.
I believe the career path I have chosen is a way to help others to improve our society in multiple ways like lowering crime rates.
As a future teacher, I will use the knowledge I have on a variety of topics and teach them to students and collaborate with my fellow staff members.
I agree because helping others will also make me feel good.
I disagree with this statement as I did not have many classes or experiences on how to improve society.
I do agree with the statement based on the fact that I have always been involved with my community before attending SMSU, while attending SMSU, and plan to remain involved in the future. Unfortunately, SMSU did not have much impact on my involvement or willingness to improve the community. That feeling came from my involvement in DELETED and pride in my hometown.
I have learned so much about working with others through my courses at SMSU. Looking at who I was as a freshman and who I am now as an almost graduate I am completely different. I have the knowledge and skills to work with any type of individuals to effectively and efficiently solve issues.

Participant Responses
Meh, overall I felt like I did more while in the Boy Scouts in high school. But being in the medical field it is my obligation to try and improve society's health.
The responsibility and commitment to using my knowledge and skills can be used to improve society. I think it depends on the person if they will apply these to make a difference in the workplace.
There is some responsibility, but not much commitment. I plan to do what I do, and hope it makes a difference.
I feel prepared to be the best teacher I can be. I am excited to begin my teaching career.
I agree that I have the responsibility and commitment to collaborate with others to improve society, but I disagree that I learned all of these skills through SMSU. These are things that I have learned from my family, peers, and role models, not through the classes that I have taken here.
I learned a lot of the above-mentioned skills before I attended SMSU.
It is up to each individual to do their part in order to contribute to society and to build a community that people want to be involved in.
While I agree that I have a want to do it. I also believe that I cannot commit to an overall statement of responsibility to society as a whole because my personal responsibilities to others, such as my family, friends, or church, may one day take priority over that. While many times these issues may become one and the same, there are scenarios where it would not be a responsibility of mine due to other responsibilities.
My student teaching experience required me to do it.
I agree that I will use the knowledge and skills I have gained through my education to collaborate with others when I am a teacher to serve my students, school, and community.
I agree with this statement because I was fortunate enough to be able to attend a 4-year university in which I have gained a plethora of knowledge. With this knowledge, I owe it to myself and society to help better the society by sharing my thoughts and ideas on how we can improve society. I know understanding other people's points of view is important in establishing a basis of relationships/friendships. I am responsible for using the knowledge I have learned in the past 4 years to improve relationships and society as a whole.
I plan on using specialized skills I have learned through my time at SMSU to better businesses, which in turn better society. I am specifically interested in healthcare management, and my interest is in helping people through good management.
I know the correct ways to teach children to be a better impact on society as they continue their educational journey.
Overall being a decent human being and building people to accept differences and celebrate them. Rather than push people down for being different.
I agree with the above statement because it is our duties as humans to come together and work together to make the world a better place. Small or huge, we all have a role in our society, so it's our job to use the knowledge we each have and help each other outgrow more.
I thought that this university seriously lacked in providing me a strong education and actually preparing me for my desired field.
It is my civic duty to be involved in society. I have every right to change our society for the better.
The classes I've taken have prepared me for it.
It's all contingent on the situations

Participant Responses
I agree with this statement because with the knowledge I have gained through my education I feel my opinion is useful. I may not agree with everyone else's opinion but I will always stand up for what I feel is right and work with people who feel differently than I do. I will continue to work towards getting better and learning more and more throughout my life. With that, I hope I can impact others for the better and make the world a better place through my career and daily routine.
I believe that now I that I have the proper education I am encouraged to put it to use and help others in any way that I know how to help make our society a better and more functional place to live
In just about every class I took throughout the DELETED major we were required to work within groups. This allowed us to not only learn how to work with other people to create a greater good, but also work with people different than ourselves.
What is this? An essay? Lol. Not happening. I do personally believe that no matter who you are or what your background is you should try to improve society. I'm excited to get into the real world and do just that.
My field of study, DELETED has been very heavily focused on community awareness and involvement of social issues and how to improve on them. I think it takes specific skills to become familiar with different situations relevant to society, and my time and classes here within the DELETED and much of the DELETED programs and professors have been very proficient in doing that for me as I ready myself for the real world and the real issues.
Throughout my classes at SMSU, I have had the opportunity to work with a variety of people, to learn valuable information, and to better myself. With all of that which I have gained, I feel that will help me to improve society. I just want to do my best and my part to help others and the community.
As an educator, I have a duty to use the skills and knowledge I have gained during my time at SMSU to help better society by impacting students' lives in positive ways and making it so that they as many opportunities as possible.
Working in DELETED will allow me to touch and help better the lives of other people.
I intend to be involved in advocacy. I want to work in a museum, which, while not directly affecting the community around me, preserves a heritage for those who come after.
I agree with this statement because I have been given the resources and knowledge to help improve society. Some of these include being open-minded to ideas and beliefs that other people have, to be a good listener to others, and just to value people especially for the ways that they are similar to you and that they differ from you. It is now my responsibility to use all that I have learned to commit to it and to use it daily.
I feel that I am able to work well with others in the field that I am interning and my hopeful career. I am able to have a discussion with my coworkers about issues and keep up with what is going on and what needs to be done.
With a DELETED degree, you have to be involved with the community along with also helping your clients along the way.
I have yet to figure out what I fully want to do after I graduate, I just know I like to work with people.
I would like to improve on society but I haven't learned a whole lot on my major since we got a new teacher that cannot speak English, pronounce easy words, and I feel like I was teaching them in class. Highly disappointed in my major after my freshman year here at Smsu
They teach us in college that it is our moral and ethical obligation to do what is right for society. This doesn't mean that you have to join an activist group and raise hell, it just means that whenever you have the change to do something to better society you should. When, or wherever it comes.
We never really discussed improving society through our major in my classes.
In education, teachers are always collaborating.

Participant Responses
As a DELETED I can help society with my knowledge acquired at SMSU
The education I received was horrible. Couldn't understand my professors who didn't speak English in my major and whenever they attempted to help students they would be discouraging and telling us the whole assignment was wrong and to do it a different way they never explained how to do.
I feel that with my degree, I can work with other educators to improve the education of children, especially younger ones. I've learned a lot about special needs, accommodations, different strategies, etc. I have also added resources that will help me keep up to date on what is going on in the education world.
I WAS ALREADY PROVIDING A SERVICE BEFORE ATTENDING SMSU.
I do not have a strong interest in community involvement or a mission to improve society. I am indifferent to the topic.
I went to college to further my education. I did this so I could put my stamp on the world, to help society. I plan to use my degree to do so
I have learned that anyone can make a difference and that together we can do something that can help or community
All DELETED must follow this statement as part of the scope, standards, and ethics of the profession.
The whole reason I'm going to school in the first place is to have a career that I love and to be able to help people at the same time. There is no greater reward than knowing you have helped someone or something, and I definitely want that to be a huge part of my career/future life.
All members of society have an obligation to do the best they can to support others. People who are fortunate enough to be educated are held to a higher expectation to advocate for those who are less fortunate or able.
As a DELETED , being open to collaborating with medical staff and clients improve society. Having the ability to advocate for patients is a big area I know. Can help
While we as human beings do have the responsibility to try and improve society, it can be done in simple ways. These included simple volunteering. There are ways to make a difference that involve our knowledge and skills from our educations but that is not the be all and end all way to improve society
With my DELETED major, I am able to help out others by sharing what is happening in our society through DELETED productions and telling stories to others.
By having a DELETED degree I am able to help those around me and help change society for the better. The classes I took were challenging and difficult, but with hard work and determination, I was able to do my best.
I am privileged to have had higher education as there are countless others out there in the world who aren't as lucky as I am. Therefore, I have a duty to be of service to others and educate those who are underprivileged -- to combat all the ignorance and hatred not only in our society but to all humankind. I would love to collaborate with those who know more than me so that we may be able to increase the well-being of the people around us.
I have always believed that my life's goal is to become a productive member of society. With the education provided by SMSU, I now have the means with which to accomplish this goal.
I have gained skills in being good at working on social problems, however, in my last semester, I felt like I did not gain any insight into important criteria in being a good DELETED . Taking a test based on memorization does not help get me to retain any knowledge.
I feel it is everyone's responsibility to collaborate with others to improve society or it won't change.
I have the responsibility and the commitment to use the knowledge and skills I have gained through my education to advance my career and provide a life for myself. I did it for myself and to get into a career where I could help people.

Participant Responses
I'm going to be a teacher, so I will need to use the skills that I learned to be able to teach the future of this country.
It is important to me to help others grow and succeed and I think that by volunteering or serving the community through my career can do that.
I feel I already had the ability to improve the community before I got to SMSU, but I never did anything about it before I got to SMSU.
My experience here has reinforced within me the idea that we are here to help each other out. When we only pursue selfish interests, it creates a society of selfish and apathetic individuals. I didn't get through this on my own I had help from professors and the state. Now I owe it to my professors and the state to work towards improving the community.
I disagree with this statement because I don't feel that I have learned much at all about improving our society. My classes were focused on improving student learning and finding ways to help my students succeed. Not finding ways to improve society. I don't feel like this applies at all to me.
Better communication with peers
I feel comfortable to use my skills of being able to research and learn more about topics and teach others about what I learned.
I believe that my education at SMSU has opened up new areas of interest for me that revolve around advocacy and social change. SMSU has motivated me to be a leader and use my skill set to better the community I am a part of.
I strongly agree with this statement because I can use the DELETED I learned to help advance further research in the real world.
I believe that because I have observed situations in which there need to be improvements at SMSU, that I have learned what needs to be better in communities like Marshall. The skills I have are not primarily gained through my education, it has been through my job, and volunteer experiences I sought out on my own.
I didn't learn much in my classes about how to be involved in my community. I learned a lot of things about being a part of the community outside the SMSU walls. What I learned in my classes is what I need to know within my career, not my community
Morally, I have always wanted to help society, and be a contributing member of my community. I wouldn't say that SMSU has changed my views, or made me more driven to do this, however. I feel that SMSU has taught me well in my chosen career path of DELETED , and I plan to use my degree to work in the business field in the future, and when necessary, help the community if I can. I don't feel that my main purpose is to change society. I feel like my purpose is to the best I possibly can in the field I find myself in, and ethically make the right decisions that won't impact the society in a negative way. And if I can, I will do my best to make the community/society a better place to live.
My education has provided essential critical thinking skills to apply for my work in the lab to real-world issues.
I agree with this because everyone affects society. Being a double major in DELETED I have become aware of the environmental issues that can help better a society. I feel that it is not only my responsibility but everyone's responsibility.
Personally, not using the knowledge and skills gained through education to collaborate with others to improve society would be a waste. We've all experienced working with others, even with differences aside from our own that have helped us accomplish a task for the better. It's good to use your knowledge and skills as well as others knowledge and skills to direct and improve society. I believe applying our knowledge and skills can do more than just improve society, but even the greater good.

Participant Responses
Not everything is about improving society. Based upon these questions, I would say that the writer subscribes to the philosophy that we should all sacrifice for the good of all. I do not agree with that. It should be left up to each individual. If some just want to make money after college, so be it. If some sacrifice their entire life, so be it.
Graduating college is a big accomplishment for us all, but we need to keep adding knowledge to ourselves through work. We need to use the tools and knowledge from college to help us in the work field and improve our work fields in a positive way. Help our companies grow and fix any issues from things that we learned.
I want to take what I learned and help others in any way that I can.
I feel strongly about having the responsibility and the commitment to use the knowledge and skills I have gained through my education to collaborate with others to improve society because it would be a disservice to the people who have supported me and helped me further my education to this point. Education needs and deserves to be spread to help our communities and societies.
I want to work with all kinds of people from different backgrounds because I've learned everyone has different ideas. These different ideas give the world a lot of diversity and the higher the likelihood for successful advancements in society.
With the skills and knowledge I have learned through the DELETED program I it important for me to use them to help others with my information and skills.
The education was of a high quality, but there was never a clear focus on using what was learned for the betterment of society.
This was a little difficult because I am a D2L student so I am not able to participate with on-campus type activities but I know that I am very active in my community and was before I started at SMSU but I will continue after graduation.
Through my education at SMSU, I have learned how to collaborate with future co-workers. I have also learned the commitment it takes to be in the field of education.
With the knowledge and skills I have gained with my education, I improve society by tutoring others and helping them gain knowledge and skills. By working with others and impacting everyone's lives by improving their education, I improve society in a positive way.
In my DELETED classes, we talked about real life situations which most to all relate to the community or society. Also throughout my classes, we had to find marketing related things in the local community within businesses.
Yes, my knowledge is very important to me and because of it, I am now able to lead others with a skill set that can help improve society.
I haven't learned anything or acquired any tools to improve society as a whole.
I volunteered at the local tax clinic in DELETED . This improved my skills in working with a client. This is improving society because some people cannot afford to have a public accountant do their taxes. With this tax clinic, we were able to provide tax knowledge to better our community and have more people come in to do their taxes.
I learned at SMSU how to treat people right no matter what their race is or anything else about them. I learned how to do the right thing always and try to get people around you to do that. That would help make society better. Understand that when we mess up there is consequences and when we doing something right there is a reward. Even if there isn't a reward, the feeling of doing something right is good.

Participant Responses
I agree with this statement because in some classes I did not always have a group that pulled their weight. I felt as though I was working alone, or herding cattle to get the group member what they needed to do. I was the DELETED and in that program we have over 70 students join the program every year. It is a goal from the national office for each chapter to get at least half of the members through the program and officially inducted into the society. Last year we got over that 50, and plan on getting that again this year. We will know for sure the beginning of April.
Yes, I do have the responsibility to use my education to make society better, however, I do not believe that my job should be my everything in life. I hope to engage in a community through a church and such.
I'm not really sure how I, myself, can improve society.
I agree that improving society is a noble and ambitious goal. However, I think that the improvement of the society we're thinking of starts with the improvement of the self, the family, and the communities in which we live. And that is what I feel I've been able to accomplish by being a part of SMSU.
I feel the responsibility to collaborate with others to improve society, and while I have learned some of the necessary skills at SMSU, I haven't had enough real-life experience to be able to collaborate effectively.
I did not receive a decent education at SMSU, so I cannot agree with any of these statements. The program I was enrolled in failed to provide competent professors and advisors.
I agree with this because I think that everyone has a voice and can change the world for the better. I want to leave the earth better than when I came. I want to know I have impacted people in a positive way and helped others who needed it. Not all have the opportunity to go to college and it's not easy. I want to use what I have learned to teach others. People learn from others and that's what I want to do.
I like to help those in my community in need.
I plan on utilizing the skills and knowledge I have gained through SMSU to continue to serve those around me. I will work to better my city and the lively-hood of those around me.
I agree that it is my responsibility to use what I learned in college and apply it to my new job after graduation. It is a commitment that I hold myself accountable. I also agree that it is my responsibility to collaborate with others in society and use the skills I have acquired during my time.
I believe that everyone has a responsibility and commitment to using their knowledge and skills to improve society. I think educating one's self is a great way to do that, but definitely not the only way.
I will work passionately towards achieving my lifelong goals.
Through smsu classes and volunteering for DELETED has taught me a lot about giving back and always being approachable
As a DELETED major, we spend much time learning about and discussing social problems that we can see around us in everyday life. While I have always had a desire to help others and find a career that allows me to make a difference, my major has helped direct where and how to do that.
As a DELETED , it is part of the expectations.
What I have learned at SMSU will definitely help me with my future career plans to serve others and help in any ways that I can.
From my education I earned at SMSU I can use it to better do my future and current jobs. I had experience interacting with people from different cultures and ethnic groups that I think in any setting I would be able to adapt and do my job effectively, confidently, and ethically. I can bring my knowledge to the workplace and spread it throughout in a way to give back to society.

Participant Responses
I want to improve society, but in light of recent activism events, I feel that it is easy said than done. The future seems very unknown to me. I would like to help my community, but I don't know if that will necessarily be with my career or more like volunteer groups.
Using my education and major to improve other people's lives.
I feel that since I have had the opportunity to gain a higher level of education, I should pass it on and inform as many people as I can about the topics and issues I have studied.
I agree with this statement because I have invested a significant amount of time, energy, and money into my education in order to be trained in the field of education. I came into school with the desire to become a great educator, and because of the training I have received, it is now my job to use it well, to the best of my ability.
I don't think I can say that it is all through my education here at SMSU that I will help others in the community. I already enjoyed helping others before coming here, and it is more my faith in God that makes me want to help others and improve my community and society. I would say that my church involvement has created this in me more than the school.
It is important to apply my education to daily life and my environment in whatever way I can. I want to continue to learn the rest of my life.
I will use my education to better myself and others around me.
Creativity is used in one entire half of the percentage of the brain that we consistently use. While doing music, it is the only thing that uses all parts of the brain at once. Music and art, have the power to heal. Reading music, is language in itself, and it's universal. I believe that I can contribute to change the world through the power of art and music.
I agree that I want to use all of the knowledge and skills I gained in my major to apply to my future career, which is a career to improve individual lives and improve society as a whole.
DELETED is always involved with society and is always a priority.
I agree with this statement because I believe that we all have an obligation to each other to improve society in any way we can.
I have found that by working with other and discussing an issue, more are able to get done.
As an DELETED major, I have dedicated much of my studies to the human body. My career goal is to become a nurse and improve the health status of the people in the society. Healthy people equals happy people equals improve society.
As a DELETED major I now have the responsibility to do my best at improving the health and overall knowledge of a healthy lifestyle for those who seek my help.
I agree with the statement in the fact that I believe my classes at SMSU have made me a well-rounded person. I believe I have learned valuable information that I can use towards my career and information I can use in real life situations.
I hope that in any workplace I am in sometime in the future, I am able to help and understand other people enough to listen and respond intelligently. I will also be able to voice my personal opinion and have the knowledge to make changes when changes need to be made in the workplace or society.
Classes I took strongly differ from each other as far as teacher expectations even within my major which made it difficult to stay on the same page.
I believe that my education in the DELETED program could be very helpful to the community. That's what DELETED is all about in my own book. Is reaching out and helping those in need. Marshall has become a very diverse town and I think we need to reach out to other ethnic groups, as SMSU has done, and help their transition into their new community to make them feel more welcome

Participant Responses
I agree that the education that I have gained at SMSU will help me in my future endeavors. I have already found that what I have been learning in my classes has been implemented in my daily life. I have noticed that people ask me on my views in psychology and sociology to clarify thoughts or situations they have come across. From my experiences so far I have confidence that SMSU has prepared me for my next step in graduate school.
I don't feel a need to go out and improve society.
I would strongly agree with the following statement even though teaching is difficult and not for everyone, learning is continually taking place no matter where life or chance takes you, the need to teach others new things remains important, and being able to teach goes hand-in-hand to collaborating with others to improve society when you are able to get them to understand the importance of such events.
My education at SMSU improved my knowledge and skills of educating students in my future career. We often had to collaborate with peers, students, mentor teachers, professors, etc. in order to improve the education of our students.
I know what I learned here will be applied to my job
I will always collaborate with other teachers to help better myself and others.
Personally, I don't believe it's my "responsibility" to use the knowledge I've gained to do anything. Of course, I agree that I can, and likely will, use said knowledge to contribute to the improvement of society but saying it's my responsibility like I have to or have no choice, I disagree with.
I will be able to use my interpersonal relationship skills combined with my education to better any social situation I find myself in. I am confident in my ability to collaborate with others based on what skills I have gained here.
I agree that my education will help me understand the problems of society and help improve them.
I agree. Cause I do have responsibilities to help the community and my education had something to do with that.
Having grown up in this region, I am dedicated to keeping this area thriving and moving forward with society. With the knowledge I gained at SMSU, I am able to make changes and make a difference in this community by becoming more involved as a productive citizen.
I will be able to use everything I learned in my DELETED classes and use them in my career and be able to go back to my school work and help me solve the real-world issues I have during my job.
I feel like a majority of the knowledge I have gained has been through my life experiences more so than what I have gained through my education.
I agree with this statement even though I will not know what I will be doing in the future because no matter what I will be doing, I will be providing a product or service to people in some way. And most likely it will benefit society because even if you're only helping one person out, it may cause a domino effect benefiting society.
I think it is the responsibility of each person to always try and improve the different situations we are put into.
I am going into DELETED , so I will be collaborating every day to improve society!
I agree with this as the people/staff I worked with instilled that in me as a student at SMSU.
I feel that if I didn't agree with this question, I would be graduating from the wrong field. Being a DELETED , it is my job to help improve society.

Participant Responses
Being a DELETED major, I am excited to establish myself as someone who has a passion for sharing DELETED with others. People who sing in any kind of choir understand the importance of collaborating and establishing a sense of community. I truly believe in this, and that there is nothing better than a group of people performing for an audience, and the bond that creates. It is an amazing experience, and it is what I am dedicated to.
As a teacher, I will be able to collaborate with teachers and parents to make our school a better place for kids to go and learn.
In my career, I want to help solve issues in society involving health. I am hoping my education can cause me to become an intelligent medical researcher in order to improve healthcare treatments.
I have gained immense knowledge and skills that I will choose to use in the future.
I now understand more of how the world around me functions and how to evaluate information and research. I plan on using these skills to make better decisions and to educate others who are unsure.
The point of education is to not find a job. The purpose is to help society become better, no matter how small.
No thank you. I am not one to make confrontation with an opinion.
I have already done this throughout most of my life, and my education at SMSU has only re-enforced that. I try and be nice to people and help out when I can, and a college education can only help me improve in that area.
I feel I can take a step back look at a situation and see what needs improving.
Since I will be a DELETED I'll collaborate with colleagues to best be able to meet the needs of all students in my class.
One of the benefits of receiving an education is that it helps to unlock a person's potential to contribute to society. This gives me a sense of duty that can be fulfilled either directly (for example, participating in community service) or indirectly (for example, finding a career that would allow me to use my knowledge to convince others of the value of learning and serving).
Learning is a key factor to be more aware and less ignorant. Education allows for more knowledge, creativity, and closeness, to work with others of all backgrounds to improve life for all. Being educated with my AA allows me to be passionate and motivated to work with others and to get experience. I want to improve life for others because I have a willingness to learn and help because I had opportunities from SMSU that expanded my ideas, opinions, and abilities.
As a member of any society, you have the obligation to make it a better place regardless of your level of education.
I believe I'm supposed to use what I learn to make the world a better place.
When people from different backgrounds and beliefs gather together, it is often wise to listen and see things from their own viewpoint. That could go a long way to help with brainstorming and developing ideas to make our society and world a better place.
I learned how to better work with my peers and see a different point of views and allow my views to be heard in a constructive manner.
I agreed more strongly because my major is social work, and our code of ethics promotes the advocacy to use our knowledge and skills to collaborate with others to improve society. We want to improve individuals and groups in society to the best of our abilities to improve their overall well-being. Would I change one or two of my professors in this major, yes?
Being an online student had some collaboration with others, but not much.
I agree with this statement because I am a member of this society and I believe every member of society plays a role in this society. For this society to improve every member or person needs to be committed and responsible with the role they have in this society.

Participant Responses
In my major, I have learned a lot about the obesity epidemic and some of my classes have helped understand how to solve this epidemic by personally training clients to improve their overall health.
I want to teach others what I have learned. I grew to let other people grow as well.
My major has given me skills to be successful in society.
I am a DELETED major, and I am going on to become a therapist, and the whole idea of that is to use this the skills and knowledge I have gained through my educations to help people and improve society.
I have acquired knowledge of how to better serve my patients in a home care setting and coordinate their care and services with other providers.
Happy, I loved my time at SMSU
I finished my last year of college in a DELETED , so these real life issues that I experienced in the hospital has prepared me for the job, and hopefully a way to improve the society.
I believe that gaining intellect has a long-term micro effect on society, but my major and my career probably won't lead to a significant improvement in society.
I will be better off with my degree to have a financially stable life with my family and loved ones. While my job/career will have an impact on society, and I hope to make it a positive one, I don't view it as the absolute #1 main purpose of my degree to improve society. I have learned a lot here at SMSU and I'll be able to pass on the valuable traits and personal values I have learned here to others and future generations.
We're all here together so you know man live it up
I believe that the purpose of having knowledge is to share it with others. I will be open to help others in need.
Because of SMSU, I have figured out that I want to be a cardiac ultrasound technologist. With this, I will be able to test and determine if someone needs to change their lifestyle or find something that could potentially lead to death and help save their life.
One huge problem in all of America right now is Childhood Obesity and using the knowledge I have gained at SMSU I hope to help be the start of the movement to end this problem.
I feel as though with the knowledge and skills I have learned throughout my college career, I will be able to figure out ways to handle problems quickly and effectively. I will be able to use what I have learned to figure out new ways of conducting my work, and other things.
What I learned during college has prepared me to stay involved and to take a stance on what I know to be right.
A college education gives you tools that can be used to help better society and through productive collaboration with others, progress can be made. Without the proper tools and work, progress cannot be made. A college education is not something that everyone is able to attain so it is important to use the tools I have been given to help improve society and not let those tools go to waste.
I agree everything had a great experience this year at smsu
Even in a semi-rural area like Marshall, there's a lot of room for differing viewpoints and ways of life to exist, but sometimes that means conflicts will arise. What I've learned has made me more sympathetic to the situations of those who might not be like me.
That's a very basic social responsibility. My education shouldn't just benefit me, it should benefit others as well.
I did not have any involvement with any programs. I was an online student.
I think no matter what our degrees are, we all can use our education to help improve society in a number of ways whether it be through the sciences or through history, art, or language.
I want the best for my family, which involves the community they live in.

Participant Responses
I agree with this statement. A college education equips you to become a more well-rounded individual in your field.
I agree with this statement because I feel like I can have a conversation with people on the important issues that society faces.
I feel like my skills can better society because there are a lot of uneducated people in the world and I feel like by bringing intelligence into my future job, then It will make society a better place.
My experience at SMSU and the education I have obtained will help me in my job and to help my community.

Note: Responses such as “No” or “None” are not included. Minor typos and misspellings in responses have been corrected. References to individual persons, departments, and organizations have been replaced with “**DELETED**”.

Are there any other comments you would like to make?

Participant Responses
I have yet to graduate. I am currently finishing school through DELETED where I live. I plan to graduate at the end of the fall 2016 semester.
My Self as a Citizen, classes I took this last summer was an outstanding class and I would Highly recommend it to others. It promotes wonderful self-reflection and provides awesome materials.
I'm very excited that I finished my Degree it was a great experience for me.
I appreciate the DELETED program at SMSU. I have obtained a higher paying job with full benefits thanks to SMSU. I also have higher job satisfaction because of my education and how it shaped me.
I have had a wonderful experience with my online classes at SMSU and have already encouraged other co-workers to take a step in their schooling and enroll in classes.
I do think that this survey gives SMSU too much responsibility in regards to personal, community, and civic improvement. Sitting in a classroom and doing coursework does not improve those aspects of humans. Rather, the exposure to other people and field experiences do. I do not attribute the gains that I made to SMSU rather I attribute it to the people that I interacted with. Those people were NOT tied to SMSU.
It's hard for a purely online student to really get what SMSU is trying to accomplish. Online students are not in the atmosphere that SMSU is highly applauded for.
As a distance learning student, it was difficult for me to be able to travel down to Marshall 3-4 times with living almost 4 hours away. It was very challenging because I was told I was unable to work so the struggle to pay for tuition, gas, and hotel stay was very difficult. I would send emails and receive very little feedback and had to find the information on my own.
I chose a 3 or lower for most of the answers above. This is because I am a distant learner at SMSU and I did not have the experience of on-campus learning. Therefore, answering the questions any other way would be incorrect. I do believe my answers would be different if I would have been an on-campus student as this has been an exceptional school to attend!
Being I was off campus I feel I was not a part of the community service in Marshall, but I have been involved in some events in my hometown.
The reason I disagreed with most questions is that I don't believe it was SMSU that prepared me for it, rather it was life experiences
Don't make me fill out this survey if I'm a distant learning student and have no association with the community at SMSU.
I had a great educational experience at SMSU!
I am an online student. Most questions did not apply.
I am extremely sad to be leaving SMSU, but also very thankful for all the connections and relationships I have made with students and specific staff that have helped me move forward in pursuit of my Ph.D.
I will miss the college atmosphere!
There need to be major changes with the DELETED professors as well as the DELETED curriculum.
No survey questions were present in this survey. I attempted to reload the page in multiple different browsers. My responses are thus unreliable, though I need to complete this survey to graduate. If the issue becomes remedied and my true responses are desired, I can be reached at DELETED
I HAVE ENJOYED MY EXPERIENCE AT SMSU AND HOPE TO RETURN AGAIN FOR GOLD COLLEGE:)

Participant Responses
I was not involved in extracurricular activities at SMSU. I am a non-traditional student. I am married, have a child, and a full-time job. The statements that I made reflect the DELETED department. The DELETED department did a wonderful job advocating for all patients and the communities we serve.
Education is very important to me and has to lead me to where I am today -- the way I am thinking at the moment, the perspective I currently have, the way I approach situations, and so much more. It has increased my understanding of everything in the world ranging from my personal relationships to philosophy and ideas about the cosmos. I believe that education is liberating in that it frees us from living a mundane and purposeless life. Being educated allows us to be citizens not only in a society but of the universe. Through it, we may be able to improve our lives and our earth. Moreover, when we are educated, we learn to live a proactive life rather than a reactive one. I seem to wonder what a world of people who are educated would be a great world to live in. Educated parents would be able to raise their children well which would then repeat this cycle full of educated citizens who collaborate together to solve issues and make the world a better place. I think SMSU should offer a class or two about the importance of education and its application to society.
I'm not a DELETED major and did not talk about politics in my classes. This survey does not relate to me at all.
I don't really get involved with community impact projects.
SMSU needs to make a better effort to bring diversity to the university and to embrace it. The DELETED has faced unnecessary adversity when the club has members primarily from non-white ethnicities, this has not and does not sit well with me. The vast majority of students do not interact with any of the foreign exchange students, they do not embrace diversity in Marshall or at SMSU and I strongly wish this were not the case. It is because of these observations and my experiences that I have learned and grown from my time at SMSU, it is not due to my education here.
Many of these questions relate to controversial issues or the background of others. In my eyes, SMSU is not extremely diverse, because I came from a very diverse high school. If I did not come from a very diverse high school my answers may have been different.
I'm still salty that my excess printer allowances didn't roll over from year to year. Since this survey had many questions based on ethics, changing that would be just one small spot where the administration could improve the ethical culture of this university. That's all, thanks.
I feel that many other life experiences outside of SMSU have done more to shape the type of person I am both politically and socially.
I think that my classes at SMSU lacked a lot of knowledge and dedication by professors. I grew tremendously as a person through the clubs and organizations that I was a part of, especially the DELETED and DELETED . Most of the civic involvement was through them. We did mission trips and community projects, the food shelf and much more. I think the school needs to realize the amount of change and collaboration that DELETED has on our campus and in our community.
Each question in this survey starts with 'because of my SMSU experiences ...'. I think this type of question implies more than it should. Many of the questions you've asked I had to answer without reading the 'SMSU' part. For instance, I do want to do my part to improve society, but it is misguided to think I got that way because of taking some classes at SMSU. I took some classes at SMSU because I already felt that way. If you're asking if SMSU has had an influence on my way of thinking, of course, it has. But it is not responsible for my way of thinking. That came first, SMSU came after that.
I have learned far more from other students than any university would ever be able to offer me. I also believe that I came into college with my morals and priorities in the right place, and that school did not change who I want to be a whole lot.
This was a valuable program.

Participant Responses
This campus needs to stop putting money in specific areas and giving less to other areas. It's obvious that DELETED receives a large majority. We do not need to keep updating the DELETED , for example. Focus on areas of degree fields for all. DELETED finally just got smart boards, whereas most classrooms have had them for quite a while. In the " DELETED " we have speakers from the 70's (they've never been updated). The DELETED are in extremely poor shape, etc. Groups get financial assistance to travel for events. The SMSU DELETED gets invited to the one and only DELETED , and we paid for the trip out of pocket and with donations. No help from the institution. To say there isn't favoritism here is ignorance.
I have always been strong in believing for advocacy of people. SMSU has not necessarily improved nor provided inspiration towards community betterment but the education has helped review the importance of nursing in the community.
Loved my experience at SMSU.
Thank you SMSU!
There are various things on campus that should be updated. Almost all the furniture on campus looks like it's from the 70s. The lecture hall seating is kind of uncomfortable. The dorms really need to be updated they are very dated.
I loved my time here at SMSU!
The only comment is that this survey is very lengthy and takes time. I also feel that section III has somewhat repetitive questions.
Yeah. I think this survey is pretty useless, in all honesty. Or dumb. Whichever really. I didn't mark very highly on most of these because SMSU did NOT help with those aspects, and to suggest such implies that nothing else contributed to what we've learned. I did not socialize much with people during my years at SMSU, and I don't regret it. Everything I have learned that has helped me be the person I am today is not because of SMSU but because of my life experiences, through trial and error, and because of my unwillingness to bend where I should not. SMSU offered its own experiences, for better or worse, but to say SMSU is the only reason for those things.. kinda cheapens it. As if to say we didn't overcome our own obstacles and find the inner motivation to keep going. No, that was all because of SMSU right?
It was a great school
Too much redundancy and similarity in questions.
My education is from SMSU my character is from my environment these questions pertain to my character which I developed elsewhere.
I have no idea what is up with all this social responsibility bullshit. We are all social workers. It is our job as individuals to make sure everyone feels good and loved. I am a programmer, I will rarely have interaction with others aside from the group I work with. Also, I do not care if hurt people's feelings with my opinions or beliefs, it is not my job to make sure everyone feels good about what I think.
It was a great college to attend!
Some professors at this college have a lack of engagement and urgency around issues affecting students. I have notified the dean of these and seems no action has taken place. Based on these negative experiences I would not recommend this university as I expect collaboration when paying business thousands of dollars.

Note: Responses such as “No” or “None” are not included. Minor typos and misspellings in responses have been corrected. References to individual persons, departments, and organizations have been replaced with “**DELETED**”.

Further Statistical Analysis

This section of the report presents the results of additional statistical analyses of the data collected in the Civic Engagement Survey. Statistical analyses included here are as follows:

- Reliability for CMG scale
- Correlations between CMG subscales and selected demographic variables
- Cross-tabulations and chi-square tests for various measures of civic engagement and selected demographic variables
- Analysis of variance for CMG subscales indexed by selected demographic variables

Reliability

Scale	Cronbach's Alpha
Entire CMG Scale	.967
Knowledge Subscale	.908
Skills Subscale	.867
Dispositions Subscale	.912
Behavioral Intentions Subscale	.713

Subscale Correlations

Subscale Correlations	Behavioral Intentions	Knowledge	Skills	Dispositions	Overall CMG
No. of Hours Currently Working in a Week*	.064	.066	.038	.037	.051
Current Number of Hours Enrolled*	.024	-.020	.007	-.013	.001
How Often Attend Religious Activities*	.022	.022	-.001	.060	.025
Estimated No. of Courses with Community Involvement^	.095	.130	.168	.162	.164

*Spearman correlation computed for these variables ^Pearson correlation computed for this variable

Note: Highlighted values represent significant correlations at $p \leq .05$.

Cross-tabulations and Chi Squares

Gender Cross-tabs	Value	df	Asymp. Sig. (2-Sided)
X * Volunteering for One-Time Service Activities	5.322	4	.256
X * Volunteering for Campus Events	4.500	4	.343
X * Participation in Political Activities	5.491	4	.240
X * Community Involvement through Campus Organization or Club	16.573	4	.002
X * Participation in Community Service for Scholarship	1.334	1	.248
X * Estimated No. of Courses with Community Involvement	6.384	3	.094

X = Gender

Note: Highlighted values represent significant correlations at $p \leq .05$. See table(s) below for details.

		Community involvement through campus organization or club					Total
		None/Never	Once each school year	Once or twice each semester	About once a month	Nearly every week	
Gender	Male	49	31	24	24	23	151
	Female	148	42	56	24	35	305
Total		197	73	80	48	58	456

Number of Hours Currently Working in a Week Cross-tabs	Value	df	Asymp. Sig. (2-Sided)
X * Volunteering for One-Time Service Activities	14.568	12	.266
X * Volunteering for Campus Events	18.356	12	.105
X * Participation in Political Activities	10.154	12	.602
X * Community Involvement through Campus Organization or Club	24.131	12	.020
X * Participation in Community Service for Scholarship	1.038	3	.792
X * Estimated No. of Courses with Community Involvement	15.537	9	.077

X = Number of Hours Currently Working in a Week

Note: Highlighted values indicate significant chi-square at $p \leq .05$. See table(s) below for details.

		Community involvement through campus organization or club					Total
		None/Never	Once each school year	Once or twice each semester	About once a month	Nearly every week	
Number of Hours	0	45	14	19	13	11	102
Working in a Week	Less than 20	49	25	35	17	24	150
	21-39	56	25	18	14	17	130
	40+	48	10	8	4	6	76
Total		198	74	80	48	58	458

Current Number of Hours Enrolled Cross-tabs	Value	df	Asymp. Sig. (2-Sided)
X * Volunteering for One-Time Service Activities	27.247	8	.001
X * Volunteering for Campus Events	21.649	8	.006
X * Participation in Political Activities	4.547	8	.805
X * Community Involvement through Campus Organization or Club	38.762	8	.000
X * Participation in Community Service for Scholarship	2.039	2	.361
X * Estimated No. of Courses with Community Involvement	7.314	6	.293

X = Current Number of Hours Enrolled

Note: Highlighted values indicate significant chi-square at $p \leq .05$. See table(s) below for details.

		Volunteering for one-time service activities					Total
		None/Never	Once each school year	Once or twice each semester	About once a month	Nearly every week	
Current number of hours enrolled	None	3	2	0	2	0	7
	Less than 12	88	18	14	5	0	125
	12+	157	84	60	19	6	326
Total		248	104	74	26	6	458

		Volunteering for campus events					Total
		None/Never	Once each school year	Once or twice each semester	About once a month	Nearly every week	
Current number of hours enrolled	None	5	1	0	1	0	7
	Less than 12	102	14	8	1	0	125
	12+	204	79	35	7	1	326
Total		311	94	43	9	1	458

		Community involvement through campus organization or club					Total
		None/Never	Once each school year	Once or twice each semester	About once a month	Nearly every week	
Current number of hours enrolled	None	4	1	1	1	0	7
	Less than 12	82	11	13	11	8	125
	12+	112	62	66	36	50	326
Total		198	74	80	48	58	458

Marital Status Cross-tabs	Value	df	Asymp. Sig. (2-Sided)
X * Volunteering for One-Time Service Activities	15.224	4	.004
X * Volunteering for Campus Events	26.459	4	.000
X * Participation in Political Activities	1.604	4	.808
X * Community Involvement through Campus Organization or Club	37.576	4	.000
X * Participation in Community Service for Scholarship	0.391	1	.532
X * Estimated Number of Courses with Community Involvement	9.161	3	.027

X = Marital Status

Note: Highlighted values indicate significant chi-square at $p \leq .05$. See table(s) below for details.

		Volunteering for one-time service activities					Total
		None/Never	Once each school year	Once or twice each semester	About once a month	Nearly every week	
Married or Not	Married	67	14	7	5	1	94
	Not Married	181	90	67	21	5	364
Total		248	104	74	26	6	458

		Volunteering for campus events					Total
		None/Never	Once each school year	Once or twice each semester	About once a month	Nearly every week	
Married or Not	Married	84	6	2	2	0	94
	Not Married	227	88	41	7	1	364
Total		311	94	43	9	1	458

		Community involvement through campus organization or club					Total
		None/Never	Once each school year	Once or twice each semester	About once a month	Nearly every week	
Married or Not	Married	66	12	6	6	4	94
	Not Married	132	62	74	42	54	364
Total		198	74	80	48	58	458

		Estimated number of courses with community involvement				Total
		0	1-2	3-4	5 or more	
Married or Not	Married	34	32	11	17	94
	Not Married	123	168	42	31	364
Total		157	200	53	48	458

How Often Attend Religious Activities Cross-tabs	Value	df	Asymp. Sig. (2-Sided)
X * Volunteering for One-Time Service Activities	13.933	12	.305
X * Volunteering for Campus Events	8.431	12	.751
X * Participation in Political Activities	10.058	12	.611
X * Community Involvement through Campus Organization or Club	13.145	12	.359
X* Participation in Community Services for Scholarship	0.478	3	.924
X * Estimated Number of Courses with Community Involvement	12.793	9	.172

X = How Often Attend Religious Activities

Note: None of the chi-squares reached significance at $p \leq .05$.

One-way ANOVAs Gender

		ANOVA				
		Sum of Squares	df	Mean Square	F	Sig.
BEHAVIORAL INTENTIONS Subscale	Between Groups	.990	1	.990	.876	.350
	Within Groups	512.899	454	1.130		
	Total	513.889	455			
KNOWLEDGE Subscale	Between Groups	3.871	1	3.871	3.906	.049
	Within Groups	446.955	451	.991		
	Total	450.826	452			
SKILLS Subscale	Between Groups	1.696	1	1.696	1.929	.166
	Within Groups	395.553	450	.879		
	Total	397.249	451			
DISPOSITIONS Subscale	Between Groups	1.394	1	1.394	1.452	.229
	Within Groups	435.139	453	.961		
	Total	436.533	454			
OVERALL AVERAGE	Between Groups	1.883	1	1.883	2.156	.143
	Within Groups	389.561	446	.873		
	Total	391.445	447			

Note: Highlighted values indicate significant ANOVA at $p \leq .05$, see table below for details.

Descriptives

		N	Mean
BEHAVIORAL INTENTIONS Subscale	Male	151	3.8433
	Female	305	3.7443
	Total	456	3.7770
KNOWLEDGE Subscale	Male	151	3.9191
	Female	302	3.7230
	Total	453	3.7883
SKILLS Subscale	Male	150	3.7683
	Female	302	3.6382
	Total	452	3.6814
DISPOSITIONS Subscale	Male	151	3.9695
	Female	304	3.8520
	Total	455	3.8910
OVERALL AVERAGE	Male	150	3.8791
	Female	298	3.7417
	Total	448	3.7877

Number of Service Learning Courses

		ANOVA				
		Sum of Squares	df	Mean Square	F	Sig.
BEHAVIORAL INTENTIONS Subscale	Between Groups	9.713	3	3.238	2.896	.035
	Within Groups	507.640	454	1.118		
	Total	517.353	457			
KNOWLEDGE Subscale	Between Groups	18.108	3	6.036	6.273	.000
	Within Groups	433.015	450	.962		
	Total	451.123	453			
SKILLS Subscale	Between Groups	18.148	3	6.049	7.161	.000
	Within Groups	379.297	449	.845		
	Total	397.445	452			
DISPOSITIONS Subscale	Between Groups	19.904	3	6.635	7.186	.000
	Within Groups	417.283	452	.923		
	Total	437.186	455			
OVERALL AVERAGE	Between Groups	18.243	3	6.081	7.244	.000
	Within Groups	373.576	445	.839		
	Total	391.819	448			

Note: Highlighted values indicate significant ANOVA at $p \leq .05$, see table below for details.

Descriptives

		N	Mean
BEHAVIORAL INTENTIONS Subscale	0	157	3.5945
	1-2	200	3.8433
	3-4	53	4.0377
	5 or more	48	3.7847
	Total	458	3.7744
KNOWLEDGE Subscale	0	155	3.5305
	1-2	199	3.9146
	3-4	53	4.0839
	5 or more	47	3.7825
	Total	454	3.7895
SKILLS Subscale	0	154	3.4140
	1-2	199	3.7889
	3-4	53	3.9646
	5 or more	47	3.7926
	Total	453	3.6824
DISPOSITIONS Subscale	0	156	3.6083
	1-2	200	4.0230
	3-4	52	4.1462
	5 or more	48	4.0000
	Total	456	3.8928
OVERALL AVERAGE	0	153	3.5205
	1-2	198	3.9002
	3-4	52	4.0808
	5 or more	46	3.8746
	Total	449	3.7891

Current Number of Hours Enrolled

		ANOVA				
		Sum of Squares	df	Mean Square	F	Sig.
BEHAVIORAL INTENTIONS Subscale	Between Groups	1.707	2	.853	.753	.472
	Within Groups	515.646	455	1.133		
	Total	517.353	457			
KNOWLEDGE Subscale	Between Groups	.390	2	.195	.195	.823
	Within Groups	450.732	451	.999		
	Total	451.123	453			
SKILLS Subscale	Between Groups	.341	2	.170	.193	.825
	Within Groups	397.105	450	.882		
	Total	397.445	452			
DISPOSITIONS Subscale	Between Groups	.461	2	.230	.239	.787
	Within Groups	436.725	453	.964		
	Total	437.186	455			
OVERALL AVERAGE	Between Groups	.204	2	.102	.116	.890
	Within Groups	391.615	446	.878		
	Total	391.819	448			

Note: None of the ANOVAs reached significance at $p \leq .05$.

Descriptives

		N	Mean
BEHAVIORAL INTENTIONS Subscale	None	7	3.2857
	Less than 12	125	3.7893
	12+	326	3.7791
	Total	458	3.7744
KNOWLEDGE Subscale	None	6	3.9815
	Less than 12	124	3.8181
	12+	324	3.7750
	Total	454	3.7895
SKILLS Subscale	None	6	3.8958
	Less than 12	124	3.6603
	12+	323	3.6869
	Total	453	3.6824
DISPOSITIONS Subscale	None	6	4.1667
	Less than 12	125	3.8944
	12+	325	3.8871
	Total	456	3.8928
OVERALL AVERAGE	None	6	3.9722
	Less than 12	123	3.7862
	12+	320	3.7868
	Total	449	3.7891

Number of Hours Currently Working in a Week

		ANOVA				
		Sum of Squares	df	Mean Square	F	Sig.
BEHAVIORAL INTENTIONS Subscale	Between Groups	4.883	3	1.628	1.442	.230
	Within Groups	512.470	454	1.129		
	Total	517.353	457			
KNOWLEDGE Subscale	Between Groups	7.204	3	2.401	2.434	.064
	Within Groups	443.918	450	.986		
	Total	451.123	453			
SKILLS Subscale	Between Groups	2.888	3	.963	1.096	.351
	Within Groups	394.557	449	.879		
	Total	397.445	452			
DISPOSITIONS Subscale	Between Groups	4.716	3	1.572	1.643	.179
	Within Groups	432.471	452	.957		
	Total	437.186	455			
OVERALL AVERAGE	Between Groups	4.728	3	1.576	1.812	.144
	Within Groups	387.090	445	.870		
	Total	391.819	448			

Note: None of the ANOVAs reached significance at $p \leq .05$.

Descriptives

		N	Mean
BEHAVIORAL INTENTIONS Subscale	0	102	3.6830
	Less than 20	150	3.7867
	21-39	130	3.7077
	40+	76	3.9868
	Total	458	3.7744
KNOWLEDGE Subscale	0	100	3.6744
	Less than 20	149	3.8210
	21-39	130	3.6983
	40+	75	4.0385
	Total	454	3.7895
SKILLS Subscale	0	102	3.6238
	Less than 20	147	3.7355
	21-39	129	3.5959
	40+	75	3.8067
	Total	453	3.6824
DISPOSITIONS Subscale	0	102	3.8157
	Less than 20	149	3.9436
	21-39	129	3.7907
	40+	76	4.0697
	Total	456	3.8928
OVERALL AVERAGE	0	100	3.6980
	Less than 20	147	3.8451
	21-39	128	3.6943
	40+	74	3.9649
	Total	449	3.7891

How Often Attend Religious Activities

		ANOVA				
		Sum of Squares	df	Mean Square	F	Sig.
BEHAVIORAL INTENTIONS Subscale	Between Groups	2.199	3	.733	.645	.587
	Within Groups	515.103	453	1.137		
	Total	517.302	456			
KNOWLEDGE Subscale	Between Groups	2.203	3	.734	.735	.532
	Within Groups	448.490	449	.999		
	Total	450.693	452			
SKILLS Subscale	Between Groups	2.219	3	.740	.839	.473
	Within Groups	394.903	448	.881		
	Total	397.122	451			
DISPOSITIONS Subscale	Between Groups	.854	3	.285	.296	.829
	Within Groups	434.619	451	.964		
	Total	435.473	454			
OVERALL AVERAGE	Between Groups	1.542	3	.514	.586	.625
	Within Groups	389.618	444	.878		
	Total	391.160	447			

Note: None of the ANOVAs reached significance at $p \leq .05$.

Descriptives

		N	Mean
BEHAVIORAL INTENTIONS Subscale	Do not attend	111	3.7057
	Once or twice a year	116	3.8046
	Once or twice a month	110	3.8758
	Weekly or more than weekly	120	3.7139
	Total	457	3.7739
KNOWLEDGE Subscale	Do not attend	111	3.7417
	Once or twice a year	114	3.7827
	Once or twice a month	108	3.9074
	Weekly or more than weekly	120	3.7287
	Total	453	3.7881
SKILLS Subscale	Do not attend	111	3.6419
	Once or twice a year	113	3.7080
	Once or twice a month	110	3.7830
	Weekly or more than weekly	118	3.5975
	Total	452	3.6811
DISPOSITIONS Subscale	Do not attend	111	3.8505
	Once or twice a year	115	3.8704
	Once or twice a month	109	3.9651
	Weekly or more than weekly	120	3.8767
	Total	455	3.8899
OVERALL AVERAGE	Do not attend	111	3.7477
	Once or twice a year	112	3.7839
	Once or twice a month	107	3.8872
	Weekly or more than weekly	118	3.7370
	Total	448	3.7873

Marital Status

		ANOVA				
		Sum of Squares	df	Mean Square	F	Sig.
BEHAVIORAL INTENTIONS Subscale	Between Groups	.043	1	.043	.038	.846
	Within Groups	517.310	456	1.134		
	Total	517.353	457			
KNOWLEDGE Subscale	Between Groups	.159	1	.159	.159	.690
	Within Groups	450.964	452	.998		
	Total	451.123	453			
SKILLS Subscale	Between Groups	.000	1	.000	.000	.996
	Within Groups	397.445	451	.881		
	Total	397.445	452			
DISPOSITIONS Subscale	Between Groups	.023	1	.023	.024	.876
	Within Groups	437.163	454	.963		
	Total	437.186	455			
OVERALL AVERAGE	Between Groups	.111	1	.111	.127	.722
	Within Groups	391.708	447	.876		
	Total	391.819	448			

Note: None of the ANOVAs reached significance at $p \leq .05$.

Descriptives

		N	Mean
BEHAVIORAL INTENTIONS Subscale	Married	94	3.7553
	Not Married	364	3.7793
	Total	458	3.7744
KNOWLEDGE Subscale	Married	92	3.7524
	Not Married	362	3.7990
	Total	454	3.7895
SKILLS Subscale	Married	93	3.6828
	Not Married	360	3.6823
	Total	453	3.6824
DISPOSITIONS Subscale	Married	94	3.8787
	Not Married	362	3.8964
	Total	456	3.8928
OVERALL AVERAGE	Married	91	3.7579
	Not Married	358	3.7970
	Total	449	3.7891

APPENDIX

Civic Engagement Survey Items

Section I

Please identify your major field(s):

Current number of credit hours enrolled

Age

Gender

- Male
- Female

Number of hours currently working in a week

Marital Status

- Married
- Single
- Divorced
- Other

Number of children in family

Race (optional)

How often do you attend church, synagogue or religious activities

- Do not attend
- Once or twice a year
- Once or twice a month
- Weekly or more than weekly

Section II

Please indicate how often you have participated in the following as part of your student experiences at SMSU: 1= None/Never 2= Once each school year 3= Once or twice each semester 4= About once a month 5= Nearly every week

Volunteering with others from SMSU for one-time service activities such as: helping out with a Habitat for Humanity project, being part of a food drive, or contributing to the Coats for Kids event

- None/Never
- Once each school year
- Once or twice each semester
- About once a month
- Nearly every week

Volunteering for campus events such as Relay for Life or the annual Chili Feed Cook-off (to support the local food shelf)

Participation in a public debate, working on a political campaign, or assisting with voter registration

Community involvement through a campus organization or club

Community involvement as part of Federal Work Study

Service through another organization not connected with SMSU

Have you ever participated in community service as part of a scholarship?

- No
- Yes

If yes, please enter number of years:

Please estimate the number of courses that you have taken at SMSU that have included community involvement such as volunteer service, community-based learning experiences, one-time service projects, or other service activities:

- 0
- 1-2
- 3-4
- 5 or more courses

Which of the following First Year Experience events have you attended at SMSU?
(Please check all that apply.)

- Convocation Speaker(s)
- Dennis Donovan lecture- Public Achievement
- George McGovern lecture- Ending Hunger in Our Time
- Paul Loeb lecture - Soul of a Citizen
- First Year Experience follow-up events (eg. Photo exhibit, lecture, fund raiser, service activity, panel discussion)
- Winona LaDuke lecture- Sustainability
- Karl Schmidt lecture- Permaculture
- Craig Howe lecture - Sustainability
- Kent Kapplinger- Art Exhibit
- Barbara Liukkonen lecture – Water Resources

Section III

Please indicate whether you agree or disagree with the following statements. 1= Strongly Disagree 6= Strongly Agree

[CMG1] My experiences at SMSU have helped me learn a lot about opportunities to become involved in the community.

- 1-Strongly Disagree
- 2
- 3
- 4
- 5
- 6-Strongly Agree

[CMG2] As a result of my experiences at SMSU, other students who know me well would describe me as a person who can discuss controversial social issues with civility and respect.

[CMG3] My experiences at SMSU have prepared me to write a letter to the newspaper or community leaders about a community issue.

[CMG4] My SMSU education has given me the professional knowledge and skills that I need to help address community issues.

[CMG5] My experiences at SMSU have helped make me a good listener, even when peoples' opinions are different from mine.

[CMG6] Based on my experiences at SMSU, I would say that most other students know less about community organizations and volunteer opportunities than I do.

[CMG7] My experiences at SMSU have helped me realize that it is important for me to vote and be politically involved.

[CMG8] My education at SMSU has increased my confidence that I can contribute to improving life in my community.

[CMG9] Because of my SMSU education, I believe that my community is enriched by having some cultural or ethnic diversity.

[CMG10] My experiences at SMSU have helped me realize that when members of my group disagree on how to solve a problem, I like to try to build consensus.

[CMG11] My education at SMSU has made me aware of a number of community issues that need to be addressed.

[CMG12] My experiences at SMSU have increased my motivation to participate in advocacy or political action groups after I graduate.

[CMG13] Through my experiences at SMSU, I am very familiar with clubs and organizations that encourage and support community involvement for college students.

[CMG14] My SMSU experiences helped me realize that I like to be involved in addressing community issues.

[CMG15] Because of the experiences at SMSU, I believe that having an impact on community problems is within my reach.

[CMG16] Because of my SMSU experiences, I plan to stay current with the local and national news after I graduate.

[CMG17] My experiences at SMSU have enabled me to plan or help implement an initiative that improves the community.

[CMG18] My experiences at SMSU have helped me realize that I prefer to work in settings in which I interact with people who are very different from me.

[CMG19] Because of the experiences I have had at SMSU, I feel a deep conviction in my career goals to achieve purposes beyond my own self-interest.

[CMG20] My experiences at SMSU have helped me develop my ability to respond to others with empathy, regardless of their backgrounds.

[CMG21] Because of my experiences at SMSU, I intend to be involved in volunteer service after I graduate.

[CMG22] My education at SMSU has motivated me to stay up to date on the current political issues in the community.

[CMG23] My SMSU education has convinced me that social problems are not too complex for me to help solve.

[CMG24] I believe that I have a responsibility to use the knowledge that I have gained at SMSU to serve others.

[CMG25] My SMSU education has prepared me to listen to others and understand their perspective on controversial issues.

[CMG26] Based on my experiences at SMSU, I would say that the main purposes of work are to improve society through my career.

[CMG27] As a result of my experiences at SMSU, I want to dedicate my career to improving society.

[CMG28] After being a student at SMSU, I feel confident that I will be able to apply what I have learned in my classes to solve real problems in society.

[CMG29] When discussing controversial social issues during my time at SMSU, I have often been able to persuade others to agree with my point of view.

[CMG30] My SMSU experiences have helped me develop a sense of who I am, which now includes a sincere desire to be of service to others.

Section IV

Please indicate whether you agree or disagree with the following statement by selecting the appropriate number. 1= Strongly Disagree 6= Strongly Agree

I have the responsibility and the commitment to use the knowledge and skills I have gained through my education to collaborate with others to improve society.

- 1-Strongly Disagree
- 2
- 3
- 4
- 5
- 6-Strongly Agree

Please describe the ways in which you agree or disagree with this statement and provide a clear explanation of your opinions.

Are there any other comments you would like to make?