

SOUTHWEST MINNESOTA STATE UNIVERSITY

Civic Engagement Survey 2018

Analysis of data collected July 1, 2017 through June 30, 2018



Table of Contents

Background	2
Section I: General Information	3
Section II: SMSU Experience	13
Section III: Civic Minded Graduate Scale	24
CMG Subscale Scores	55
Knowledge Subscale	56
Skills Subscale	58
Dispositions Subscale	60
Behavioral Intentions Subscale	62
Section IV: Responsibility and Commitment	63
Responsibility and Commitment Comments.....	66
General Comments	81
Further Statistical Analysis.....	84
Reliability	85
Subscale Correlations	85
Cross-tabulations and Chi Squares	86
One-way ANOVAs.....	91
Appendix.....	103

Background

Civic engagement is an integral part of the Southwest Minnesota State University (SMSU) mission statement and a priority area in university strategic planning. Student involvement in civic-related activities is promoted by the campus Liberal Education Program, student clubs and organizations, academic departments and programs, and through a wide variety of course-related service-learning opportunities. Assessment of civic engagement on the SMSU campus is performed using the Civic Engagement Survey.

The Civic Engagement Survey was developed during the spring 2008 semester by SMSU faculty and staff and initially deployed as an online survey in April 2008. Graduating seniors are directed to complete this survey as part of their graduation requirements. Items on the survey measure students' demographics, their participation in volunteerism and other civic-oriented activities sponsored by SMSU, as well as their "civic-mindedness". Civic-mindedness is measured using the Civic Minded Graduate (CMG) Scale, adopted from the Center for Service and Learning at Indiana University – Purdue University at Indianapolis (IUPUI).

Data collected from spring 2008 and summer 2008 graduates (n=168) was reported in a poster presentation at the 2008 SMSU Undergraduate Research Conference and subsequently in a presentation at the 2009 SMSU Strategic Planning Day. For subsequent academic years, the data have been compiled and reported in a series of Civic Engagement Survey documents. Copies of all data files and report documents are maintained by the SMSU Center for Civic Engagement.

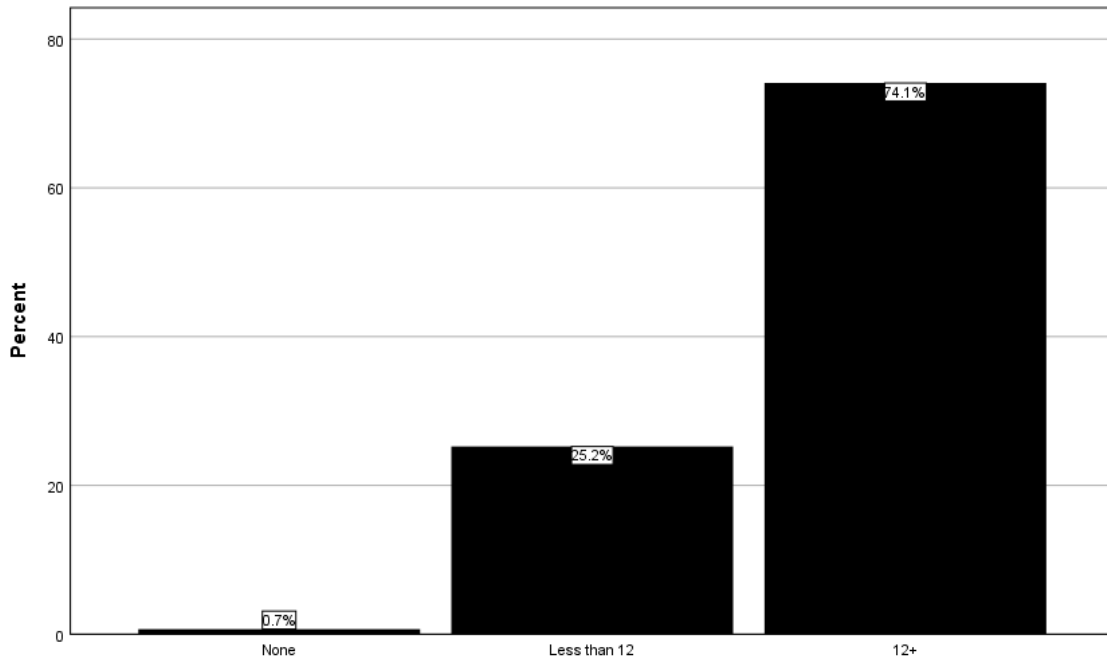
The present report summarizes data collected between July 1, 2017 and June 30, 2018. A total of 440 students completed the survey during this time period. In addition, this report includes trend analysis data for the last nine academic years: 2009-2010, 2010-2011, 2011-2012, 2012-2013, 2013-2014, 2014-2015, 2015-2016, 2016-2017, and 2017-2018. Data collected prior to the 2009-2010 academic year were not included in the trend analysis because they were obtained using a previous version of the Civic Engagement Survey, which utilized significantly different response categories for many of the items. A copy of the current Civic Engagement Survey instrument can be found in the Appendix.

Section I: General Information

Section I of the Civic Engagement Survey asks students to report various demographic characteristics. Data collected for each survey item are presented on a separate page in this section. A summary table is presented at the end of the section providing a review of the demographic characteristics for the past nine academic years.

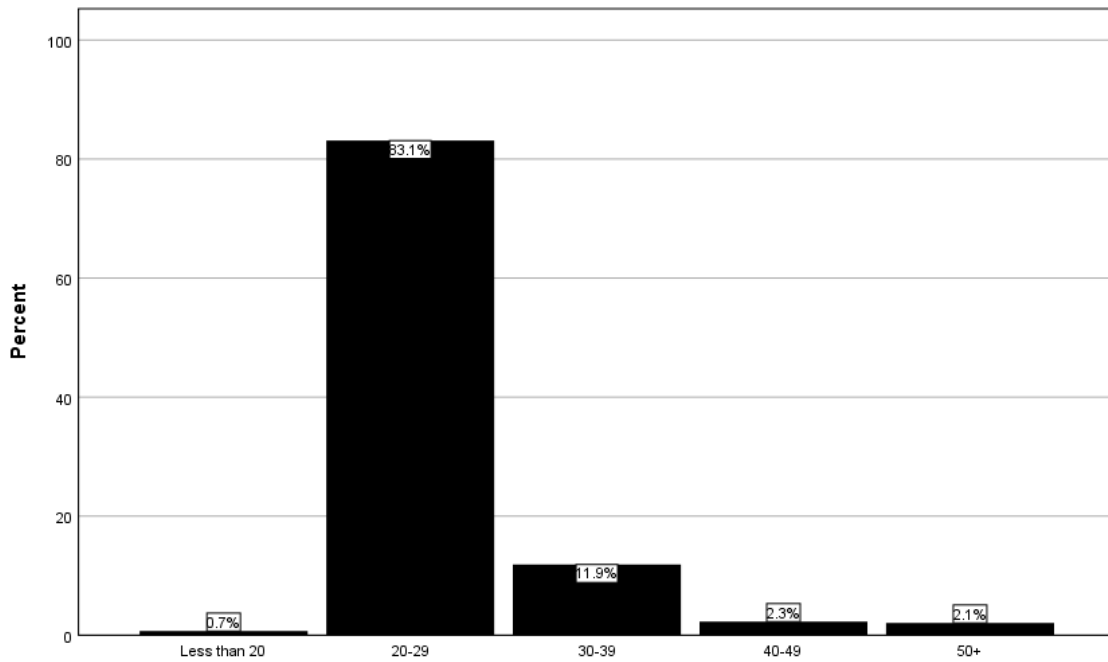
Current number of credit hours enrolled

		Frequency	Percent	Valid Percent
Valid	None	3	.7	.7
	Less than 12	111	25.2	25.2
	12+	326	74.1	74.1
	Total	440	100.0	100.0



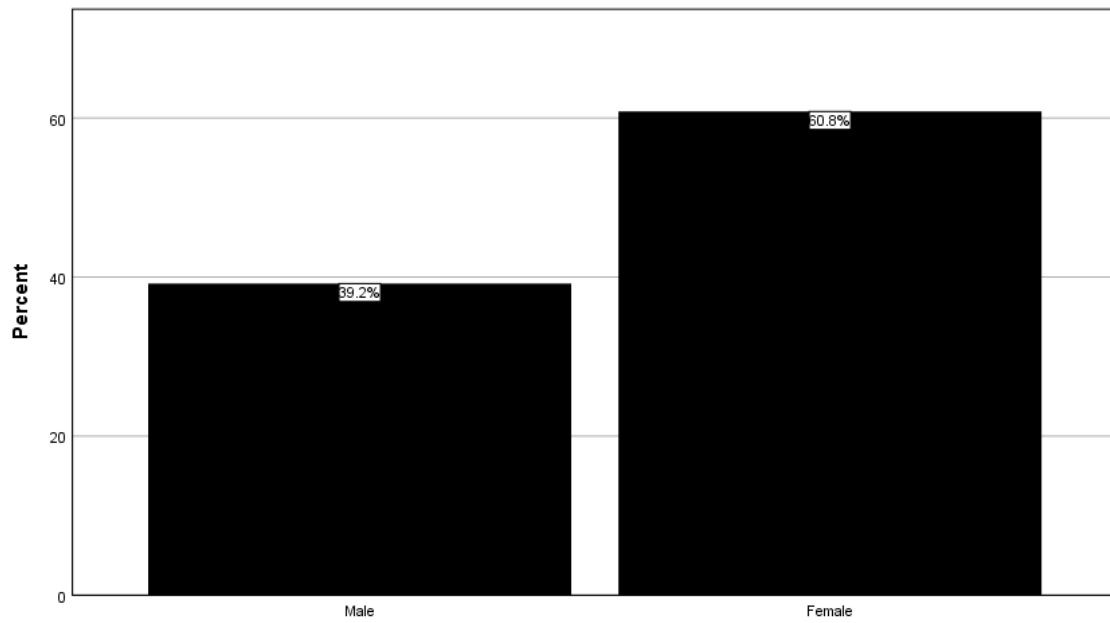
Age

		Frequency	Percent	Valid Percent
Valid	Less than 20	3	.7	.7
	20-29	364	82.7	83.1
	30-39	52	11.8	11.9
	40-49	10	2.3	2.3
	50+	9	2.0	2.1
	Total	438	99.5	100.0
Missing		2	.5	
Total		440	100.0	



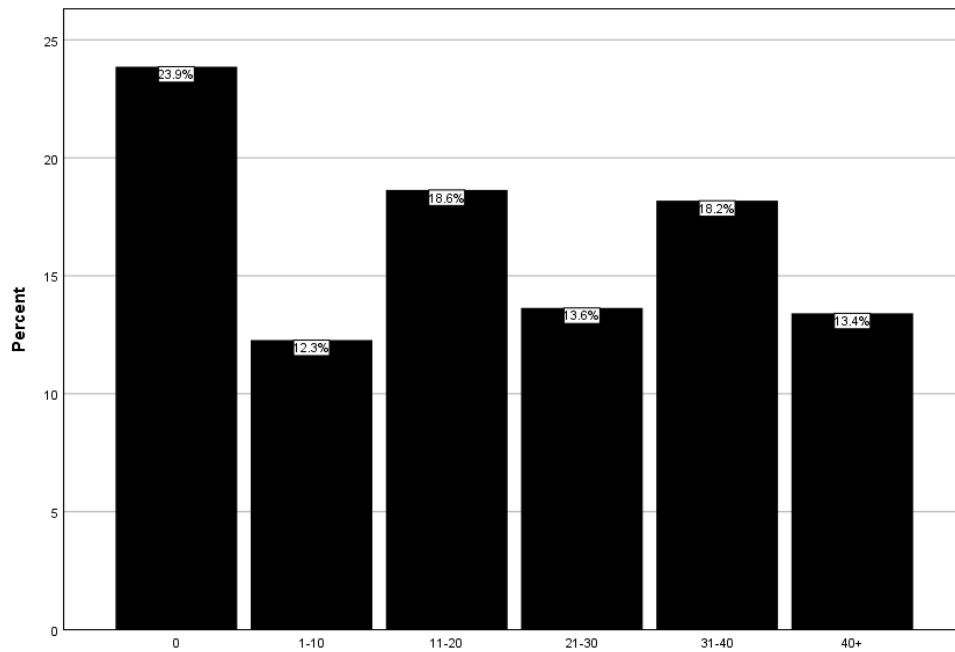
Gender

		Frequency	Percent	Valid Percent
Valid	Male	172	39.1	39.2
	Female	267	60.7	60.8
	Total	439	99.8	100.0
Missing	System	1	.2	
Total		440	100.0	



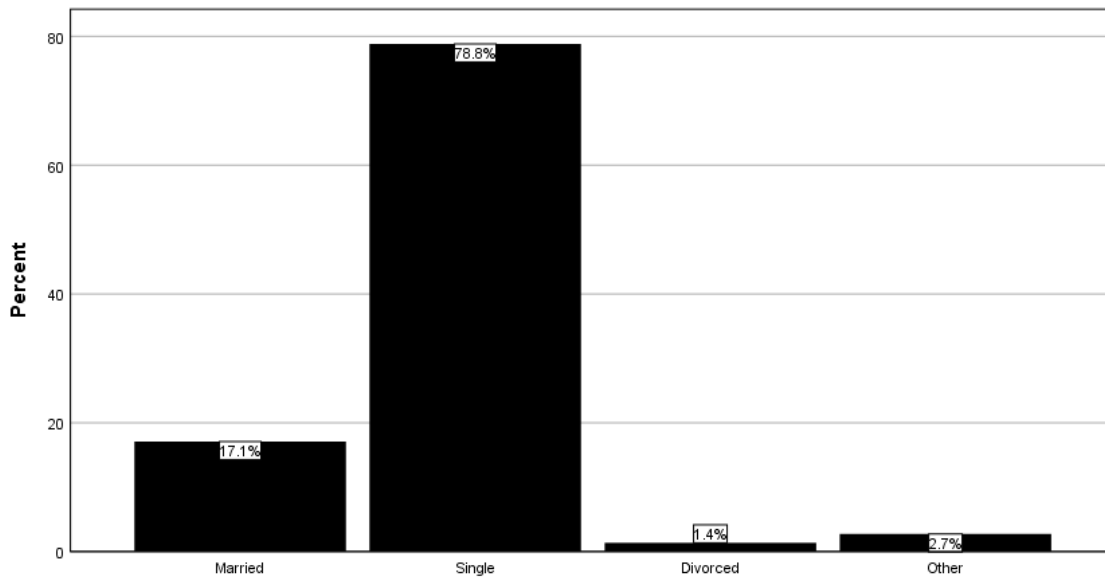
Number of Hours Currently Working in a Week

		Frequency	Percent	Valid Percent
Valid	0	105	23.9	23.9
	1-10	54	12.3	12.3
	11-20	82	18.6	18.6
	21-30	60	13.6	13.6
	31-40	80	18.2	18.2
	40+	59	13.4	13.4
	Total	440	100.0	100.0



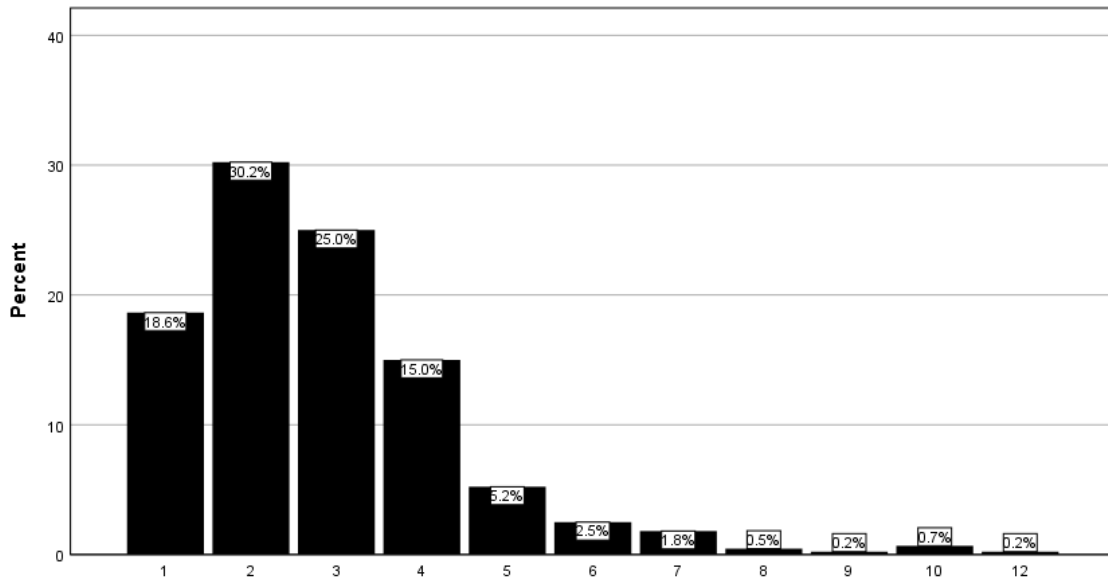
Marital Status

		Frequency	Percent	Valid Percent
Valid	Married	75	17.0	17.1
	Single	346	78.6	78.8
	Divorced	6	1.4	1.4
	Other	12	2.7	2.7
	Total	439	99.8	100.0
Missing	System	1	.2	
Total		440	100.0	



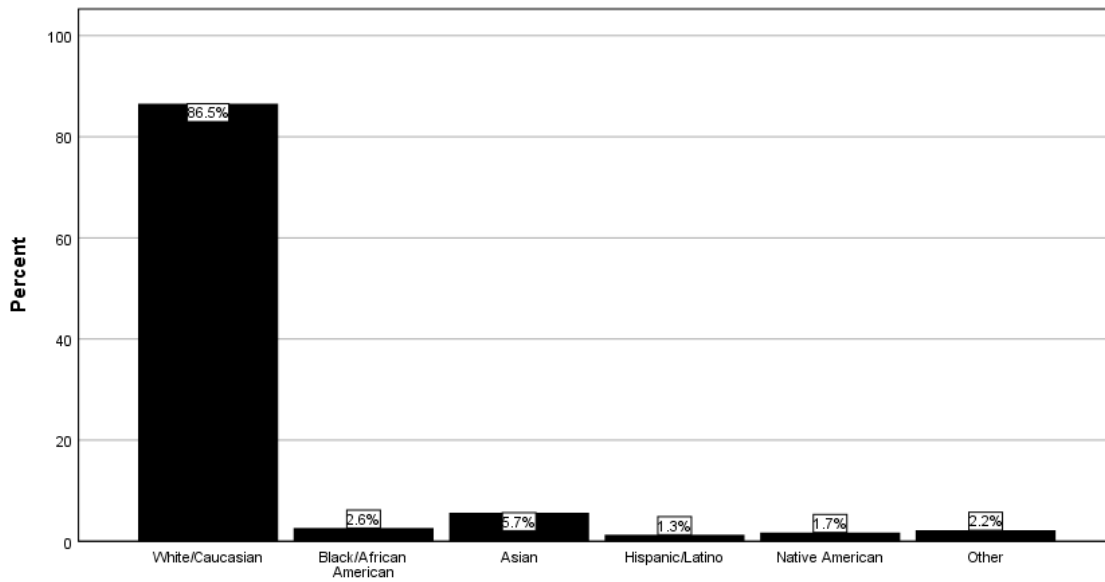
Number of children in your family

		Frequency	Percent	Valid Percent
Valid	1	82	18.6	18.6
	2	133	30.2	30.2
	3	110	25.0	25.0
	4	66	15.0	15.0
	5	23	5.2	5.2
	6	11	2.5	2.5
	7	8	1.8	1.8
	8	2	.5	.5
	9	1	.2	.2
	10	3	.7	.7
	12	1	.2	.2
		Total	440	100.0



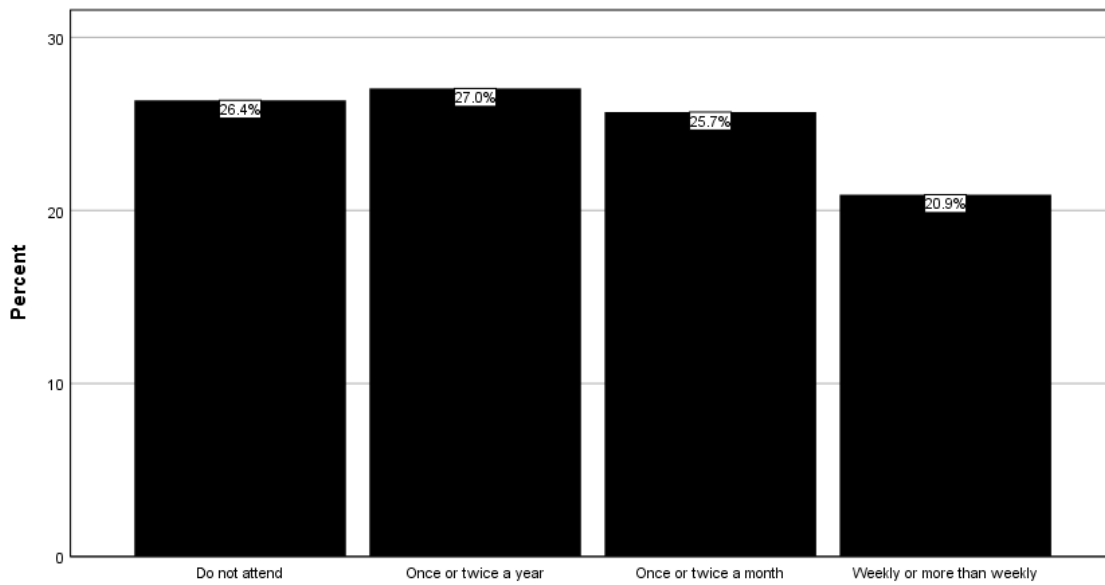
Race

		Frequency	Percent	Valid Percent
Valid	White/Caucasian	199	45.2	86.5
	Black/African American	6	1.4	2.6
	Asian	13	3.0	5.7
	Hispanic/Latino	3	.7	1.3
	Native American	4	.9	1.7
	Other	5	1.1	2.2
	Total	230	52.3	100.0
Missing	System	210	47.7	
Total		440	100.0	



How often do you attend religious activities?

		Frequency	Percent	Valid Percent
Valid	Do not attend	116	26.4	26.4
	Once or twice a year	119	27.0	27.0
	Once or twice a month	113	25.7	25.7
	Weekly or more than weekly	92	20.9	20.9
	Total	440	100.0	100.0



Demographic Trend Analysis

Demographic	Response	2010	2011	2012	2013	2014	2015	2016	2017	2018
Number		474	469	443	454	481	530	496	460	440
Mean Age		24.8	25.1	24.8	25.3	24.8	24.6	25.0	25.3	25.1
Mean Number of Children in Your Family		2.9	2.7	2.9	2.8	2.9	2.9	3.0	2.9	2.8
Current Number of Hours Enrolled	None	4.6%	3.4%	2.5%	2.0%	2.5%	1.5%	0.6%	1.5%	0.7%
	<12	24.7%	26.4%	24.5%	22.0%	26.4%	30.2%	27.6%	27.3%	25.2%
	12+	70.7%	70.1%	72.9%	76.0%	71.1%	68.3%	71.8%	71.2%	74.1%
Gender	Male	39.3%	42.9%	39.7%	37.7%	38.1%	41.3%	36.6%	33.1%	39.2%
	Female	60.7%	57.1%	60.3%	62.3%	61.9%	58.7%	63.4%	66.9%	60.8%
Number of Hours Currently Working in a Week	0	30.6%	31.8%	26.6%	28.9%	28.1%	25.1%	22.8%	22.3%	23.9%
	1-10	12.7%	8.7%	10.8%	12.6%	13.9%	11.1%	15.7%	15.3%	12.3%
	11-20	19.0%	16.6%	18.1%	17.8%	12.9%	17.9%	15.7%	17.5%	18.6%
	21-30	14.3%	15.1%	15.8%	11.9%	13.5%	15.7%	14.9%	13.8%	13.6%
	31-40	12.0%	14.1%	14.2%	14.1%	15.0%	13.2%	13.1%	14.8%	18.2%
	40+	11.4%	13.6%	14.4%	14.8%	16.6%	17.0%	17.7%	16.4%	13.4%
Marital Status	Married	19.1%	22.3%	17.7%	17.7%	17.0%	13.9%	18.8%	20.5%	17.1%
	Single	75.5%	74.2%	78.0%	76.4%	79.2%	81.1%	77.1%	73.4%	78.8%
	Divorced	2.1%	1.7%	1.8%	3.3%	1.9%	2.9%	1.4%	2.6%	1.4%
	Other	3.2%	1.7%	2.5%	2.6%	1.9%	2.1%	2.6%	3.5%	2.7%
Race	White/Caucasian	36.9%	37.7%	42.0%	42.7%	43.0%	51.1%	43.5%	49.8%	45.2%
	Black/African American	2.1%	1.9%	1.4%	2.4%	1.0%	2.1%	2.0%	2.6%	1.4%
	Asian	4.4%	2.8%	3.4%	2.0%	1.7%	1.7%	1.8%	2.4%	3.0%
	Hispanic/Latino	0.8%	0.4%	0.2%	0.7%	0.6%	0.9%	2.2%	0.7%	0.7%
	Multi-racial	0.4%	0.0%	0.9%	0.4%	0.4%	0.8%	0.6%	0.4%	0.0%
	Native American	0.2%	0.2%	0.0%	0.9%	0.2%	0.4%	0.8%	0.0%	0.9%
	Other	0.0%	0.0%	0.5%	0.4%	0.0%	1.1%	1.0%	0.7%	1.1%
Unspecified	55.1%	56.9%	51.7%	50.4%	53.0%	41.9%	47.0%	43.5%	47.7%	
How Often Do You Attend Religious Activities?	Do not attend	21.7%	21.6%	24.0%	24.7%	23.4%	19.7%	20.6%	24.3%	26.4%
	Once or twice a year	21.7%	23.9%	26.1%	24.9%	25.9%	23.9%	27.1%	25.4%	27.0%
	Once or twice a month	29.8%	30.3%	26.8%	27.6%	28.2%	33.0%	28.7%	24.1%	25.7%
	Weekly or more than weekly	26.8%	24.1%	23.1%	22.7%	22.4%	23.5%	23.6%	26.3%	20.9%

Percent's do not include missing values, with the exception of "Race" where missing values are categorized as "Unspecified".

Section II: SMSU Experience

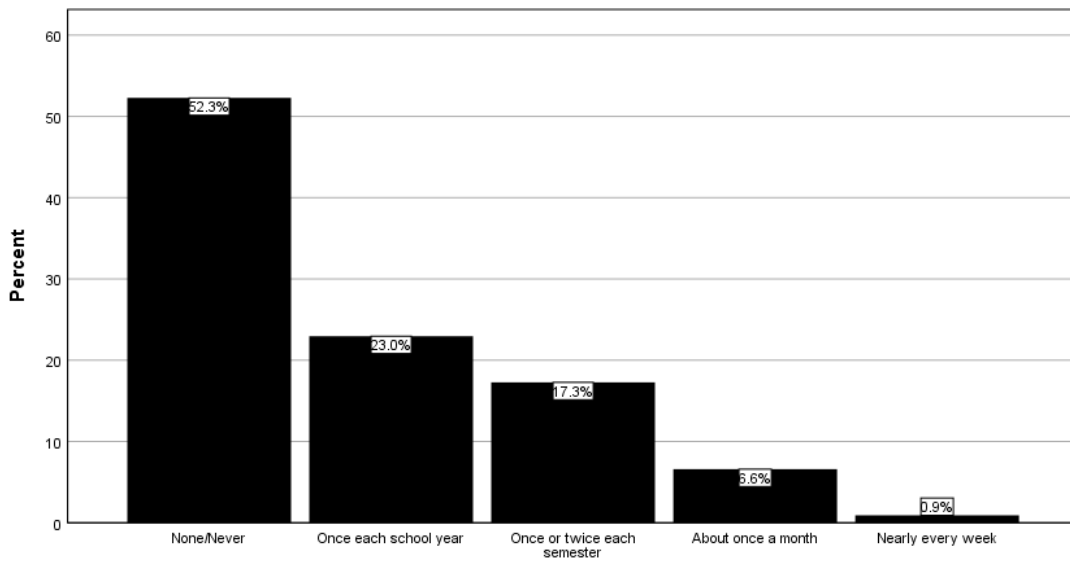
Section II of the Civic Engagement Survey asks students to report on the volunteering and community service experiences they have had while a student at SMSU. Data collected for each survey item are presented on a separate page in this section. For each item, current year data are reported followed immediately by the corresponding trend analysis data covering the past nine academic years.

All survey items in this section of the survey were preceded by the following prompt:

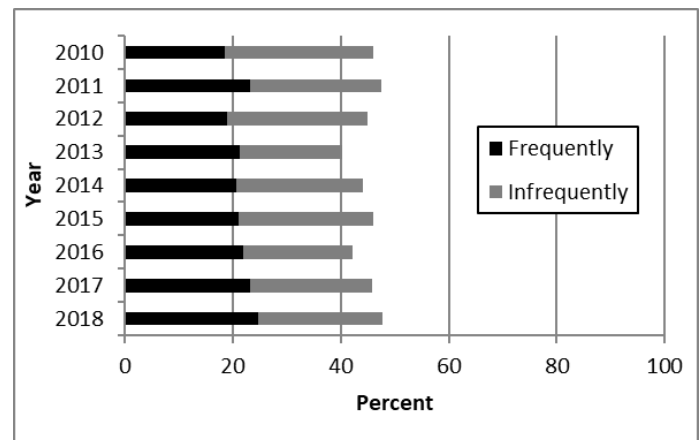
Please indicate how often you have participated in the following as part of your student experiences at SMSU: 1= None/Never 2= Once each school year 3= Once or twice each semester 4= about once a month 5= nearly every week

Volunteering with others from SMSU for one-time service activities

		Frequency	Percent	Valid Percent
Valid	None/Never	230	52.3	52.3
	Once each school year	101	23.0	23.0
	Once or twice each semester	76	17.3	17.3
	About once a month	29	6.6	6.6
	Nearly every week	4	.9	.9
	Total	440	100.0	100.0



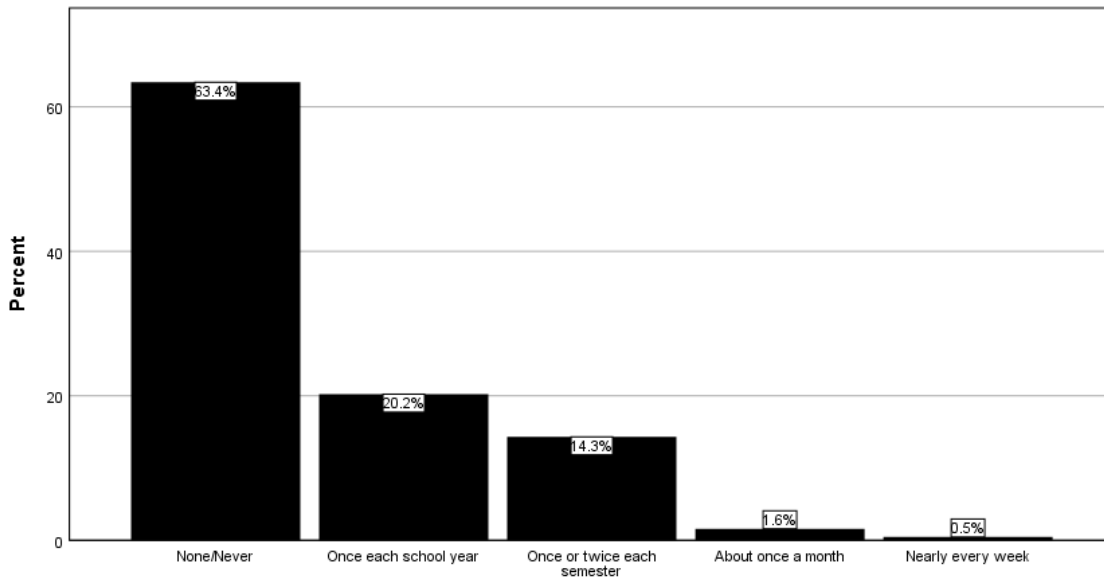
Year	Frequently	Infrequently	None/Never
2010	18.4%	27.6%	54.0%
2011	23.2%	24.3%	52.5%
2012	18.9%	26.1%	55.0%
2013	21.3%	19.0%	59.7%
2014	20.7%	23.5%	55.8%
2015	21.1%	24.9%	54.0%
2016	22.0%	20.2%	57.8%
2017	23.2%	22.7%	54.1%
2018	24.7%	23.0%	52.3%



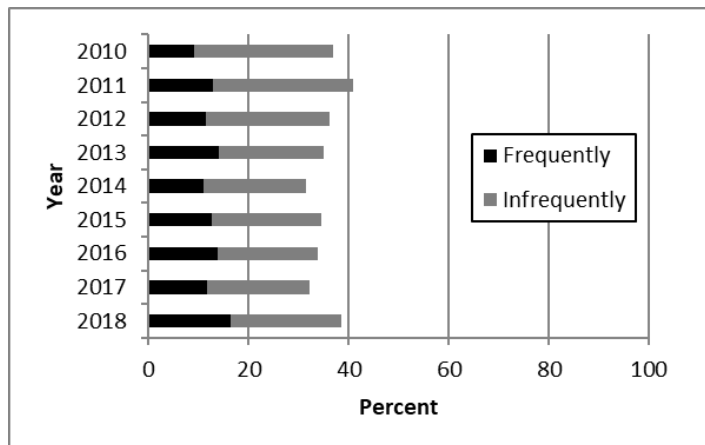
Frequently = Once or more per semester
 Infrequently = Less than once per semester

Volunteering for campus events

		Frequency	Percent	Valid Percent
Valid	None/Never	279	63.4	63.4
	Once each school year	89	20.2	20.2
	Once or twice each semester	63	14.3	14.3
	About once a month	7	1.6	1.6
	Nearly every week	2	.5	.5
	Total	440	100.0	100.0



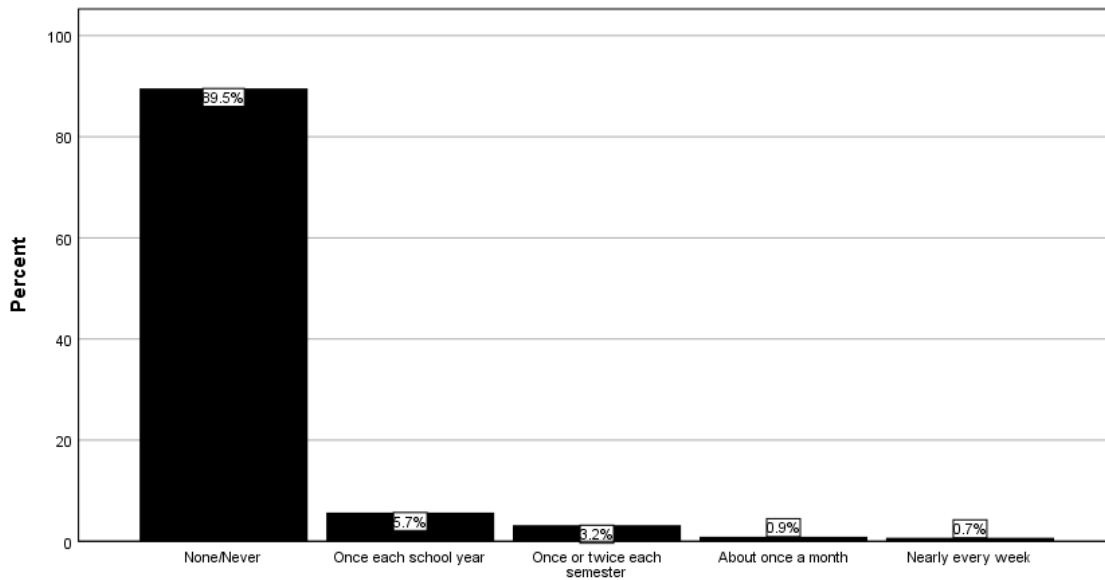
Year	Frequently	Infrequently	None/Never
2010	9.0%	27.9%	63.1%
2011	12.8%	28.2%	59.0%
2012	11.5%	24.7%	63.8%
2013	14.1%	20.8%	65.1%
2014	11.0%	20.5%	68.5%
2015	12.7%	21.8%	65.5%
2016	13.9%	20.0%	66.1%
2017	11.6%	20.5%	67.9%
2018	16.4%	22.2%	63.4%



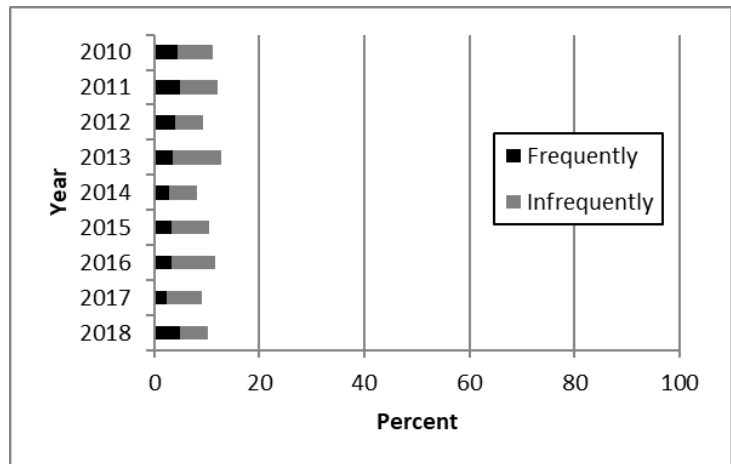
Frequently = Once or more per semester
 Infrequently = Less than once per semester

Participation in political activities

		Frequency	Percent	Valid Percent
Valid	None/Never	394	89.5	89.5
	Once each school year	25	5.7	5.7
	Once or twice each semester	14	3.2	3.2
	About once a month	4	.9	.9
	Nearly every week	3	.7	.7
	Total	440	100.0	100.0



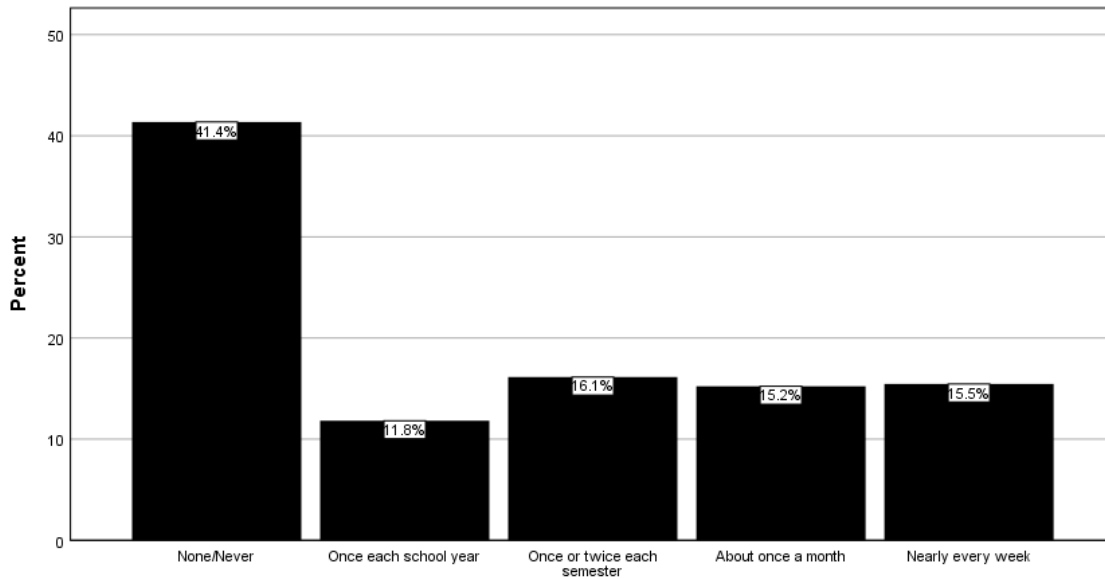
Year	Frequently	Infrequently	None/Never
2010	4.5%	6.7%	88.8%
2011	4.9%	7.1%	88.0%
2012	3.9%	5.4%	90.7%
2013	3.5%	9.3%	87.2%
2014	2.9%	5.2%	91.9%
2015	3.3%	7.2%	89.6%
2016	3.2%	8.5%	88.3%
2017	2.4%	6.6%	91.0%
2018	4.8%	5.5%	89.5%



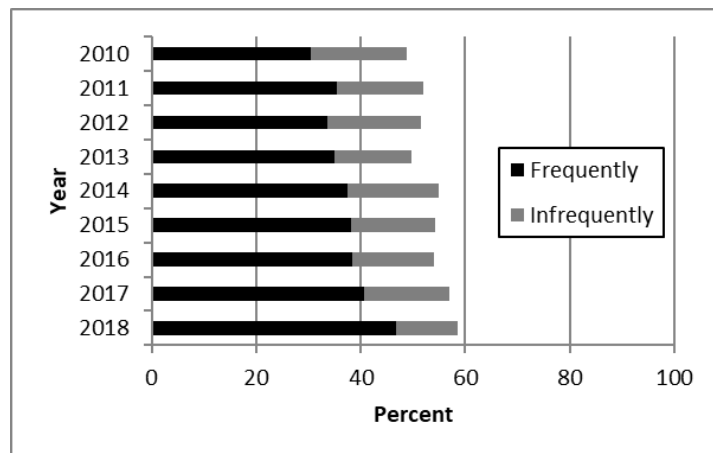
Frequently = Once or more per semester
 Infrequently = Less than once per semester

Community involvement through a campus organization or club

		Frequency	Percent	Valid Percent
Valid	None/Never	182	41.4	41.4
	Once each school year	52	11.8	11.8
	Once or twice each semester	71	16.1	16.1
	About once a month	67	15.2	15.2
	Nearly every week	68	15.5	15.5
	Total	440	100.0	100.0



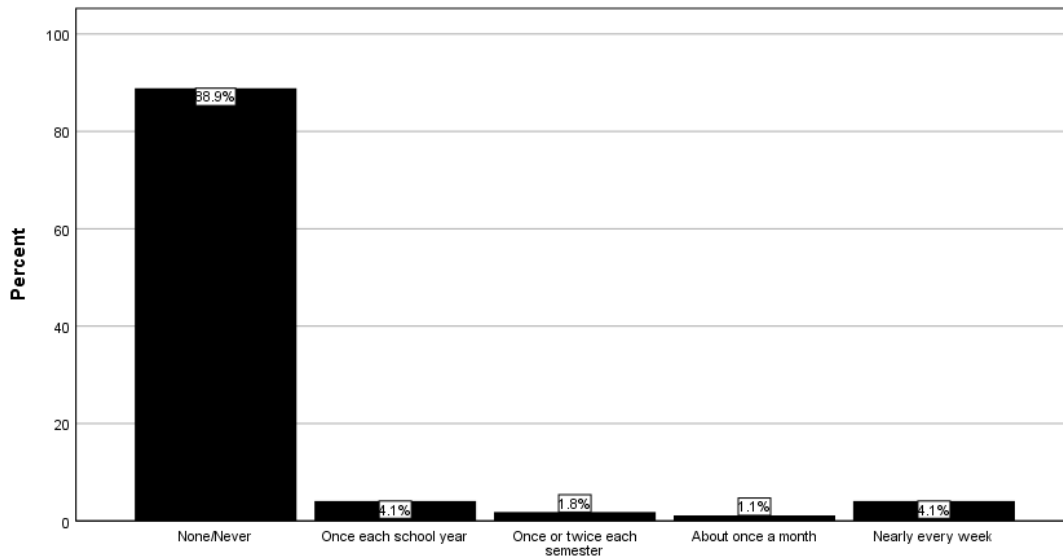
Year	Frequently	Infrequently	None/Never
2010	30.4%	18.5%	51.1%
2011	35.4%	16.5%	48.1%
2012	33.7%	17.8%	48.5%
2013	35.0%	14.8%	50.2%
2014	37.4%	17.5%	45.1%
2015	38.2%	16.1%	45.7%
2016	38.4%	15.5%	46.2%
2017	40.7%	16.2%	43.2%
2018	46.8%	11.8%	41.4%



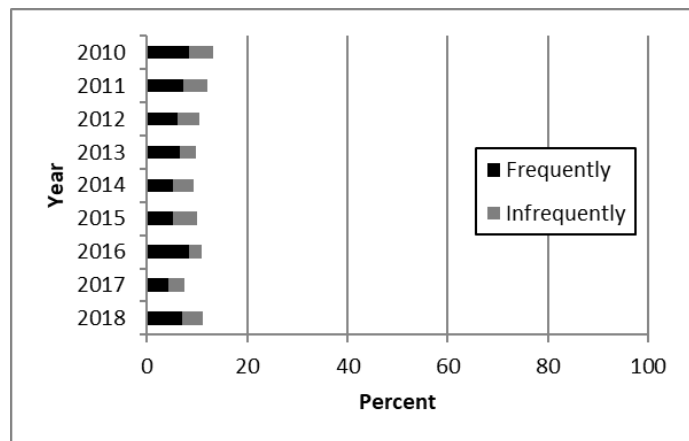
Frequently = Once or more per semester
 Infrequently = Less than once per semester

Have you participated in community service through Federal Work Study?

		Frequency	Percent	Valid Percent
Valid	None/Never	391	88.9	88.9
	Once each school year	18	4.1	4.1
	Once or twice each semester	8	1.8	1.8
	About once a month	5	1.1	1.1
	Nearly every week	18	4.1	4.1
	Total	440	100.0	100.0



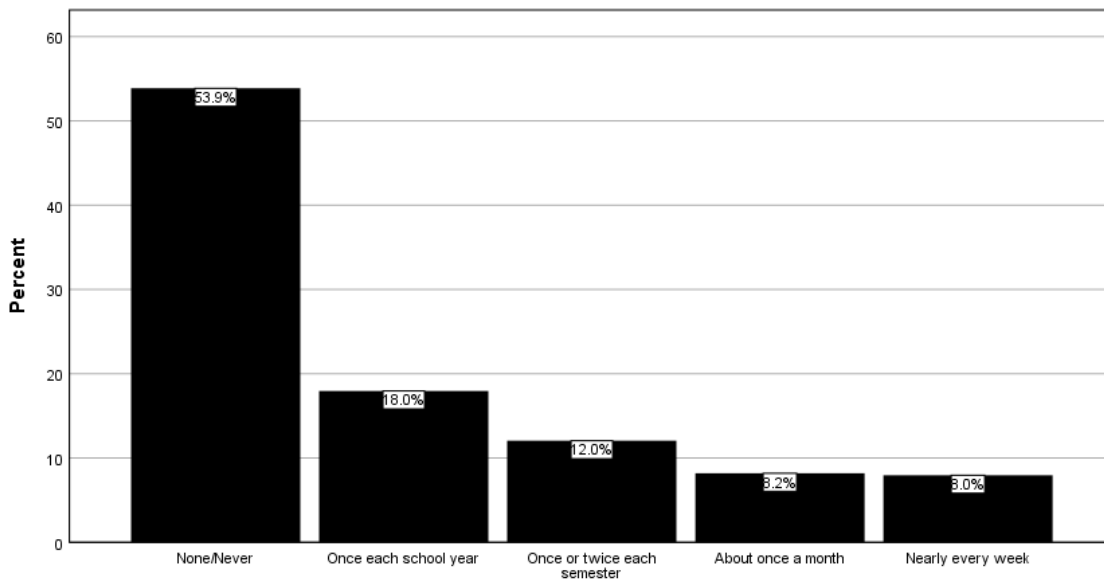
Year	Frequently	Infrequently	None/Never
2010	8.4%	4.9%	86.7%
2011	7.3%	4.7%	88.0%
2012	6.2%	4.3%	89.5%
2013	6.6%	3.1%	90.3%
2014	5.3%	4.0%	90.8%
2015	5.3%	4.7%	90.0%
2016	8.4%	2.6%	88.9%
2017	4.2%	3.3%	92.6%
2018	7.0%	4.1%	88.9%



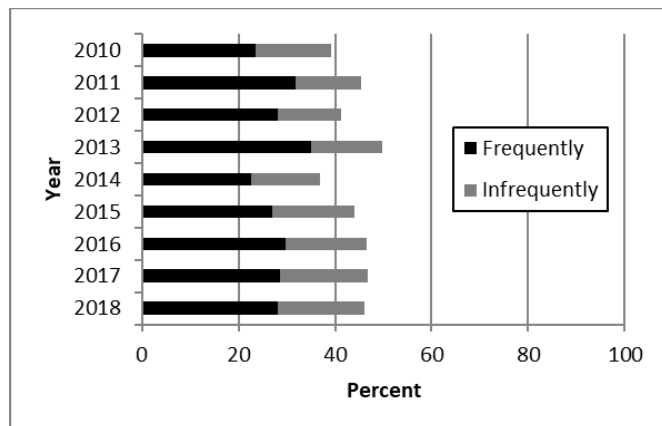
Frequently = Once or more per semester
 Infrequently = Less than once per semester

Have you participated in community service through an organization that was not connected to SMSU?

		Frequency	Percent	Valid Percent
Valid	None/Never	237	53.9	53.9
	Once each school year	79	18.0	18.0
	Once or twice each semester	53	12.0	12.0
	About once a month	36	8.2	8.2
	Nearly every week	35	8.0	8.0
	Total	440	100.0	100.0



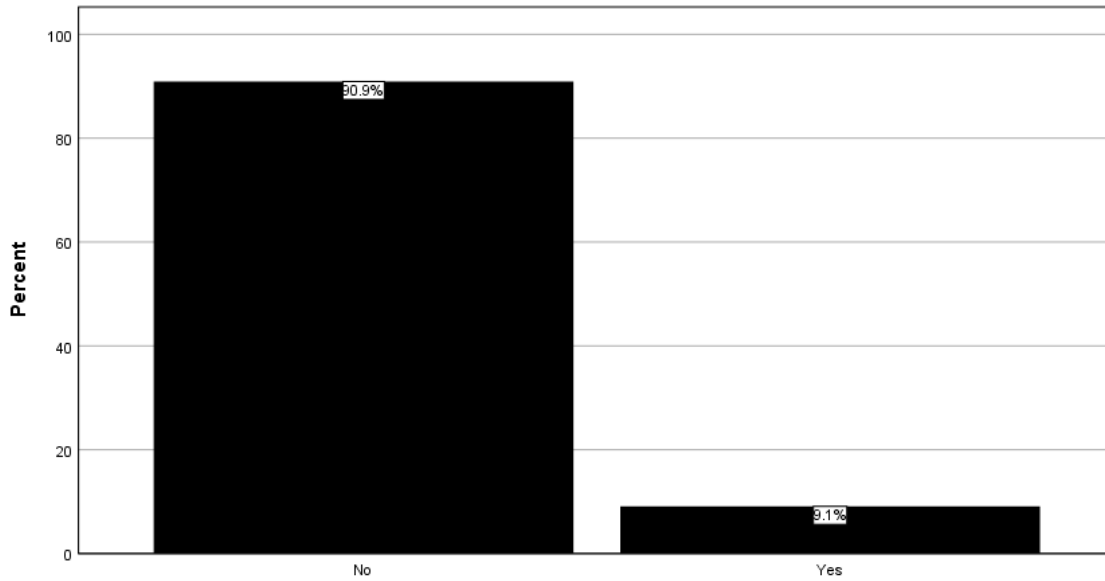
Year	Frequently	Infrequently	None/Never
2010	23.6%	15.5%	60.9%
2011	31.9%	13.4%	54.7%
2012	28.1%	13.2%	58.7%
2013	35.0%	14.8%	50.2%
2014	22.6%	14.2%	63.3%
2015	26.9%	17.2%	55.8%
2016	29.7%	16.9%	53.4%
2017	28.6%	18.1%	53.3%
2018	28.1%	18.0%	53.9%



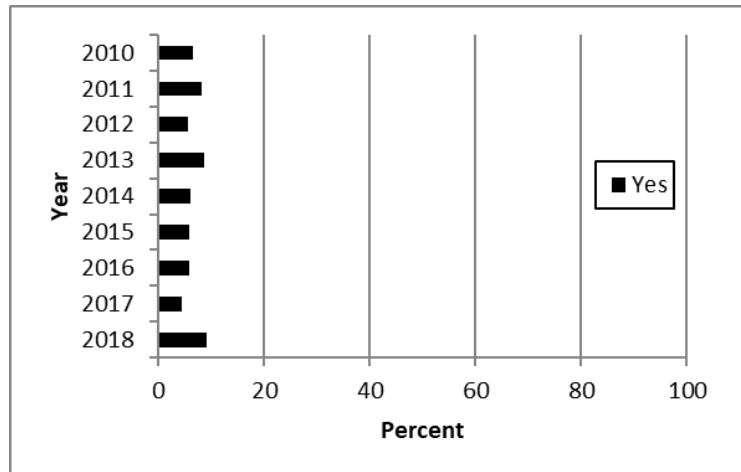
Frequently = Once or more per semester
 Infrequently = Less than once per semester

Have you ever participated in community service as part of a scholarship?

		Frequency	Percent	Valid Percent
Valid	No	400	90.9	90.9
	Yes	40	9.1	9.1
	Total	440	100.0	100.0

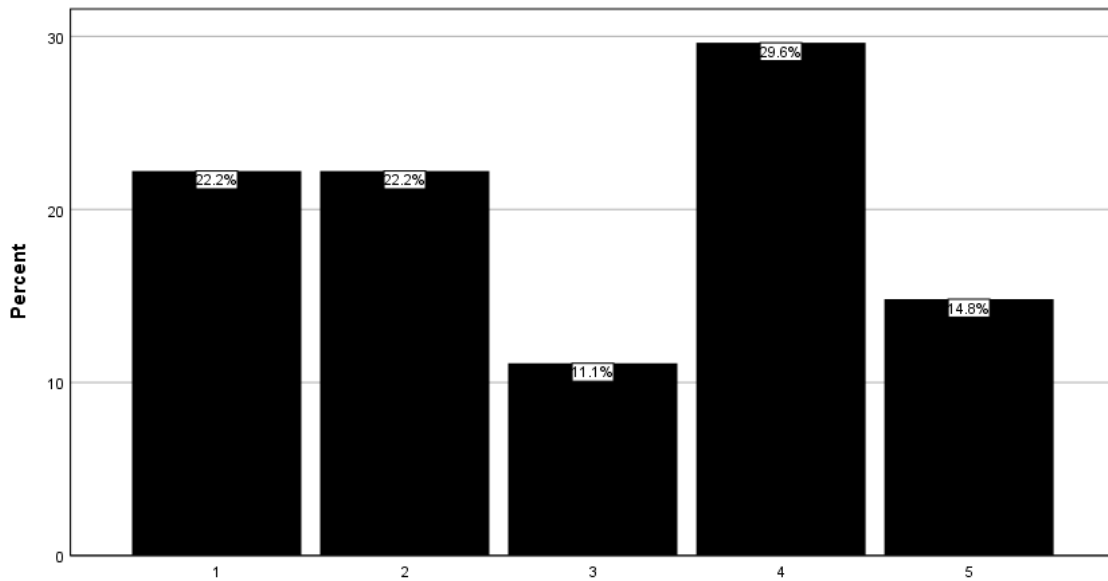


Year	Yes	No
2010	6.5%	93.5%
2011	8.2%	91.8%
2012	5.7%	94.3%
2013	8.7%	91.3%
2014	6.1%	93.9%
2015	6.0%	94.0%
2016	5.9%	94.1%
2017	4.4%	95.6%
2018	9.1%	90.9%



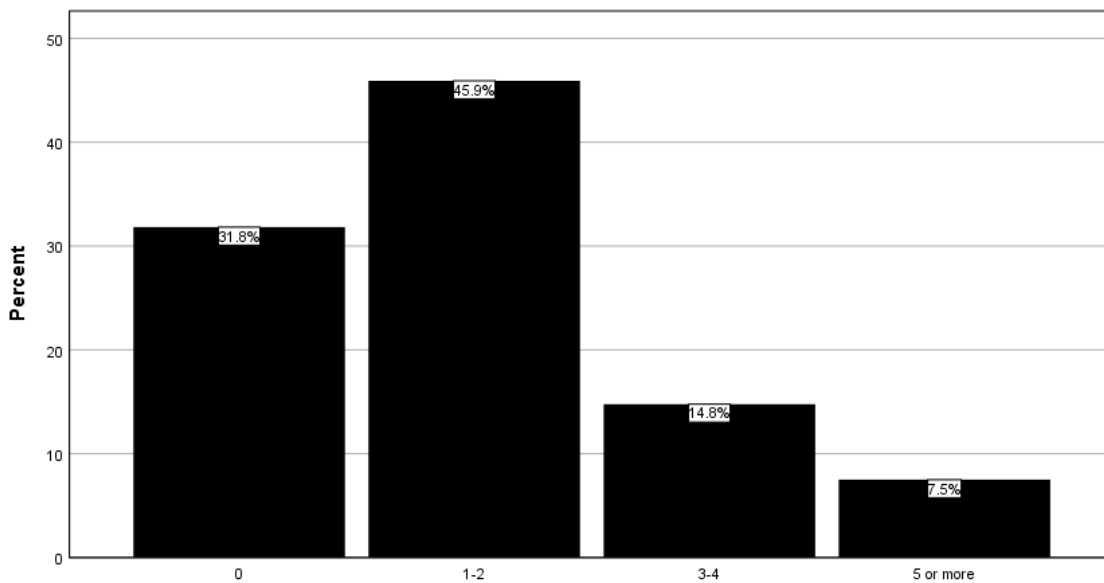
If involved in community service as part of a scholarship, for how many years?

		Frequency	Percent	Valid Percent
Valid	0	1	.2	3.6
	1	6	1.4	21.4
	2	6	1.4	21.4
	3	3	.7	10.7
	4	8	1.8	28.6
	5	4	.9	14.3
	Total	28	6.4	100.0
Missing	System	412	93.6	
Total		440	100.0	

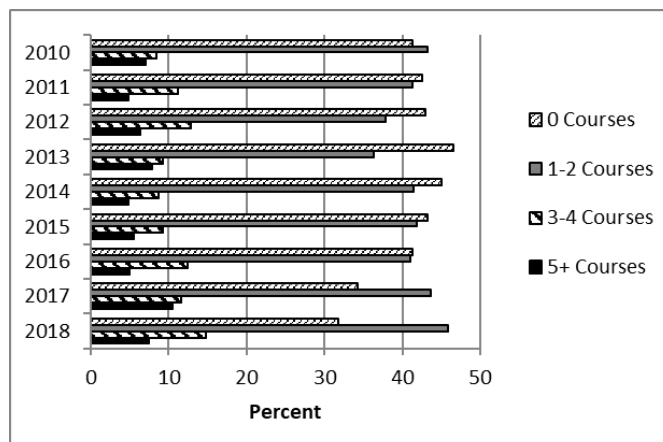


Please estimate the number of courses that you have taken at SMSU that have included community involvement such as volunteer service, community-based learning experiences, one-time service projects, or other service activities.

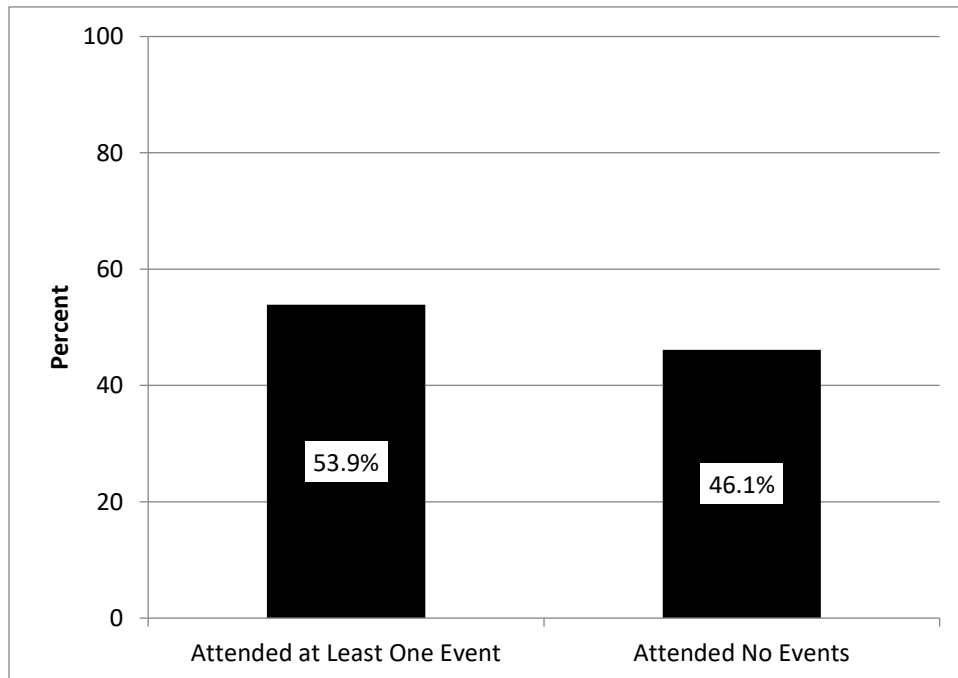
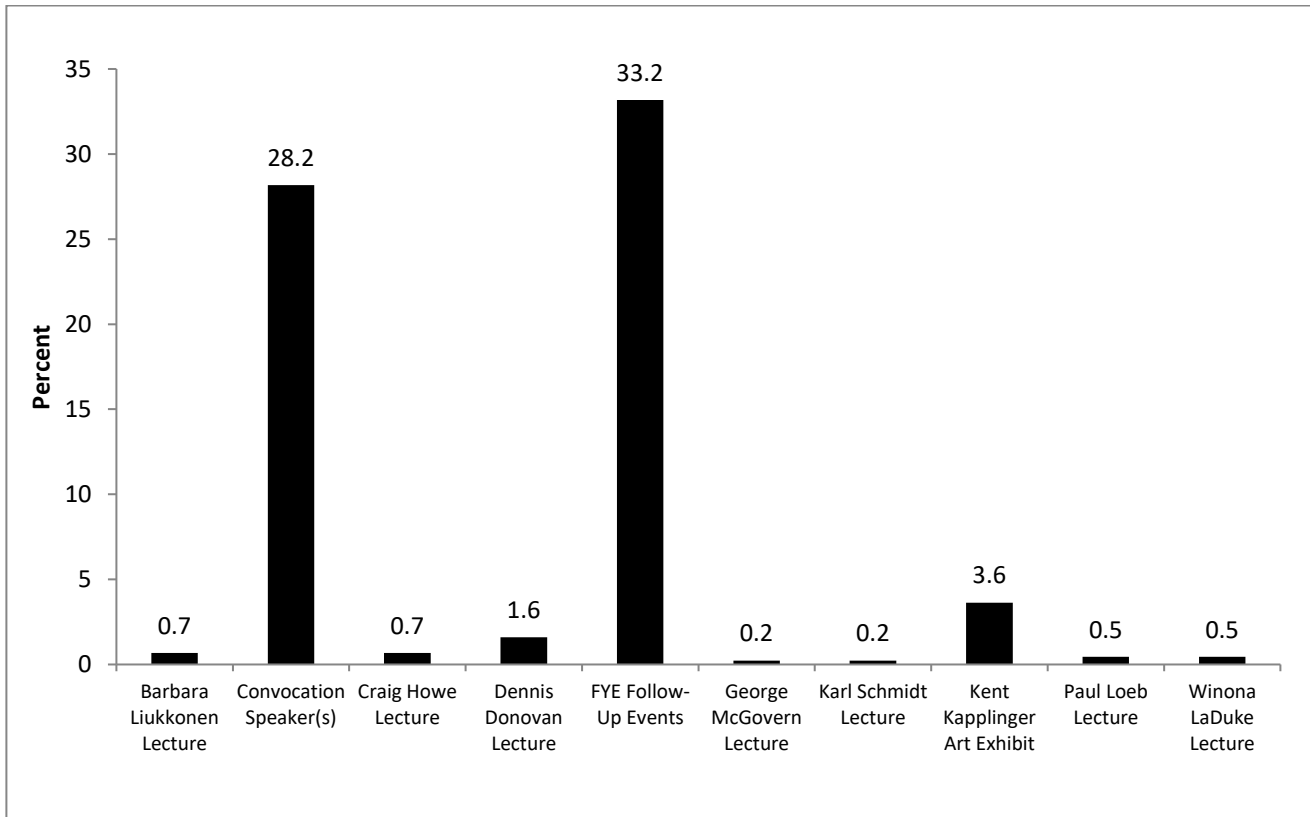
		Frequency	Percent	Valid Percent
Valid	0	140	30.4	31.8
	1-2	202	43.9	45.9
	3-4	65	14.1	14.8
	5 or more	33	7.2	7.5
	Total	440	95.7	100.0
Missing		20	4.3	
Total		460	100.0	



Year	Number of Courses			
	0	1-2	3-4	5+
2010	41.3%	43.2%	8.4%	7.1%
2011	42.6%	41.3%	11.2%	4.8%
2012	43.0%	37.9%	12.8%	6.3%
2013	46.6%	36.3%	9.2%	7.9%
2014	45.0%	41.4%	8.7%	4.9%
2015	43.2%	41.9%	9.3%	5.5%
2016	41.3%	41.1%	12.5%	5.0%
2017	34.3%	43.7%	11.6%	10.5%
2018	31.8%	45.9%	14.8%	7.5%



Which of the following First Year Experience events have you attended at SMSU?
(Check all that apply.)



Section III: Civic Minded Graduate Scale

Section III of the Civic Engagement Survey consisted of the 30-item Civic Minded Graduate [CMG] scale. This scale is used to measure students' knowledge, skills, attitudes, and behavioral intentions toward civic engagement. Data collected for each survey item are presented on a separate page in this section. At the end of the section, data for each of the subscales are compiled and are immediately followed by a trend analysis covering the past seven academic years.

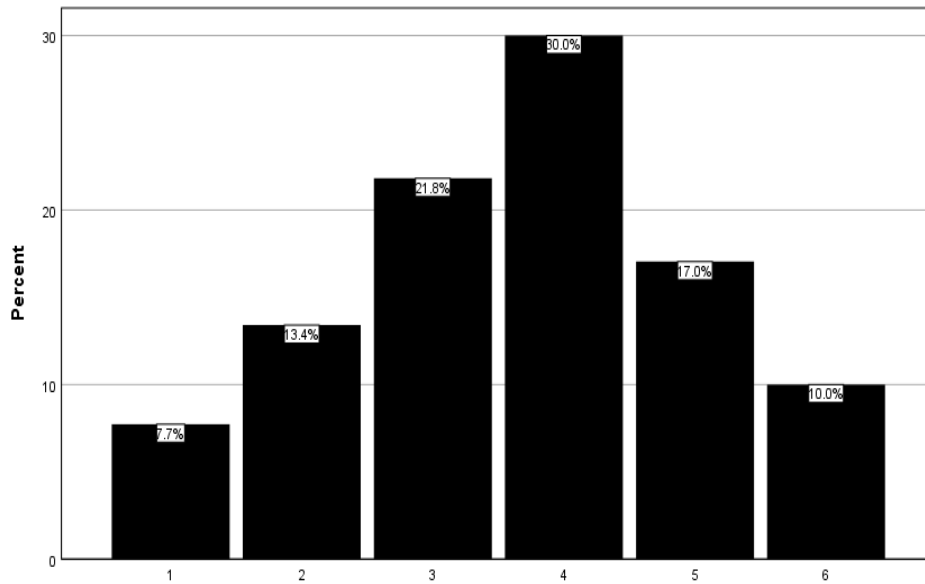
All survey items in this section of the survey were preceded by the following prompt:

Please indicate whether you agree or disagree with the following. 1= Strongly Disagree 6= Strongly Agree

[CMG1] My experiences at SMSU have helped me know a lot about opportunities to become involved in the community.
 (1=Strongly Disagree; 6=Strongly Agree)

N	Valid	440
	Missing	0
Mean		3.65
Std. Deviation		1.380

		Frequency	Percent	Valid Percent
Valid	1	34	7.7	7.7
	2	59	13.4	13.4
	3	96	21.8	21.8
	4	132	30.0	30.0
	5	75	17.0	17.0
	6	44	10.0	10.0
	Total	440	100.0	100.0

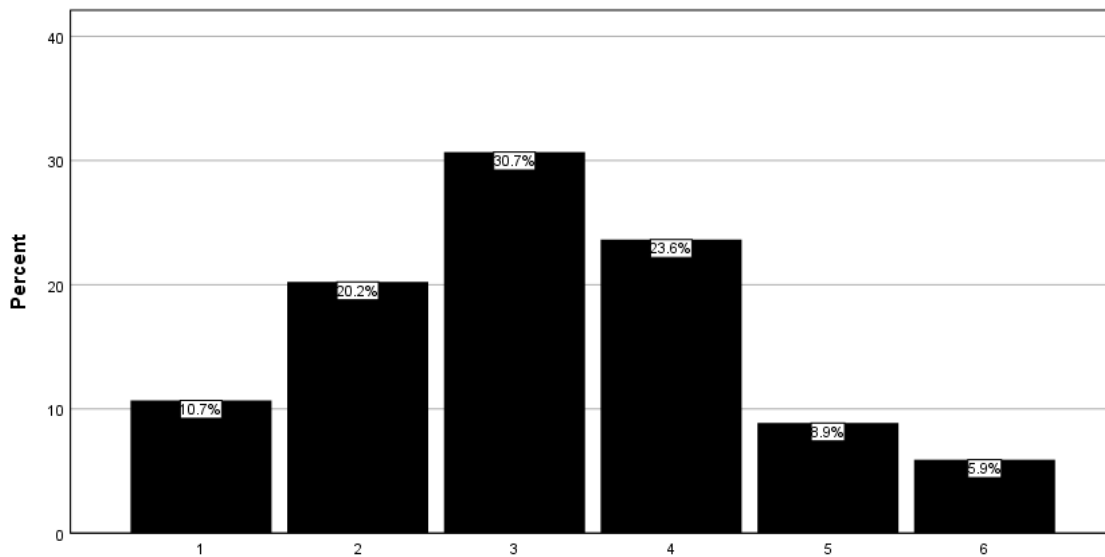


[CMG2] As a result of my experiences at SMSU, other students who know me well would describe me as a person who can discuss controversial social issues with civility and respect.

(1=Strongly Disagree; 6=Strongly Agree)

N	Valid	440
	Missing	0
Mean		3.18
Std. Deviation		1.314

		Frequency	Percent	Valid Percent
Valid	1	47	10.7	10.7
	2	89	20.2	20.2
	3	135	30.7	30.7
	4	104	23.6	23.6
	5	39	8.9	8.9
	6	26	5.9	5.9
	Total	440	100.0	100.0

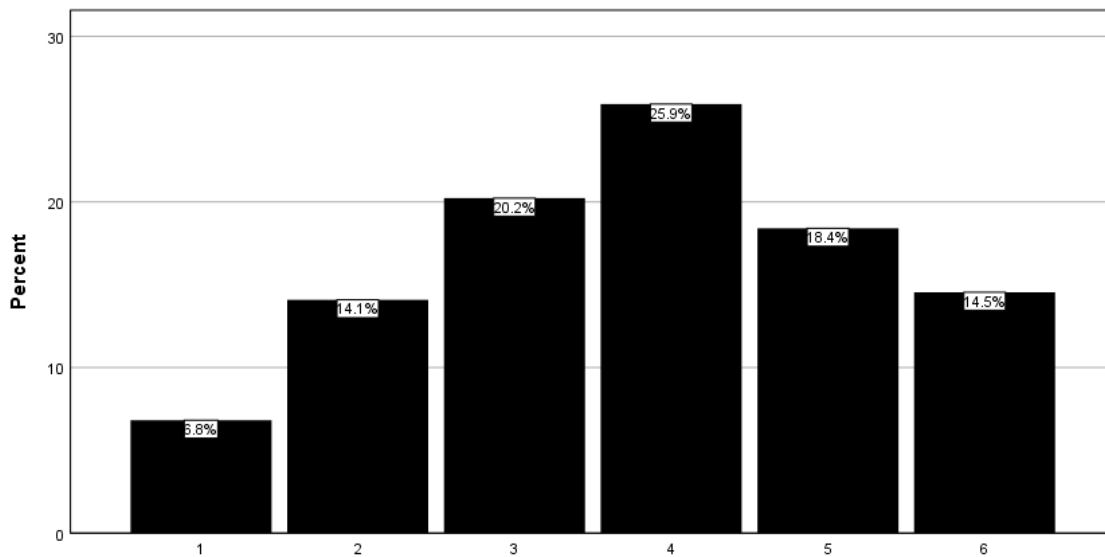


[CMG3] My experiences at SMSU have prepared me to write a letter to the newspaper or community leaders about a community issue.

(1=Strongly Disagree; 6=Strongly Agree)

N	Valid	440
	Missing	0
Mean		3.79
Std. Deviation		1.451

		Frequency	Percent	Valid Percent
Valid	1	30	6.8	6.8
	2	62	14.1	14.1
	3	89	20.2	20.2
	4	114	25.9	25.9
	5	81	18.4	18.4
	6	64	14.5	14.5
	Total	440	100.0	100.0

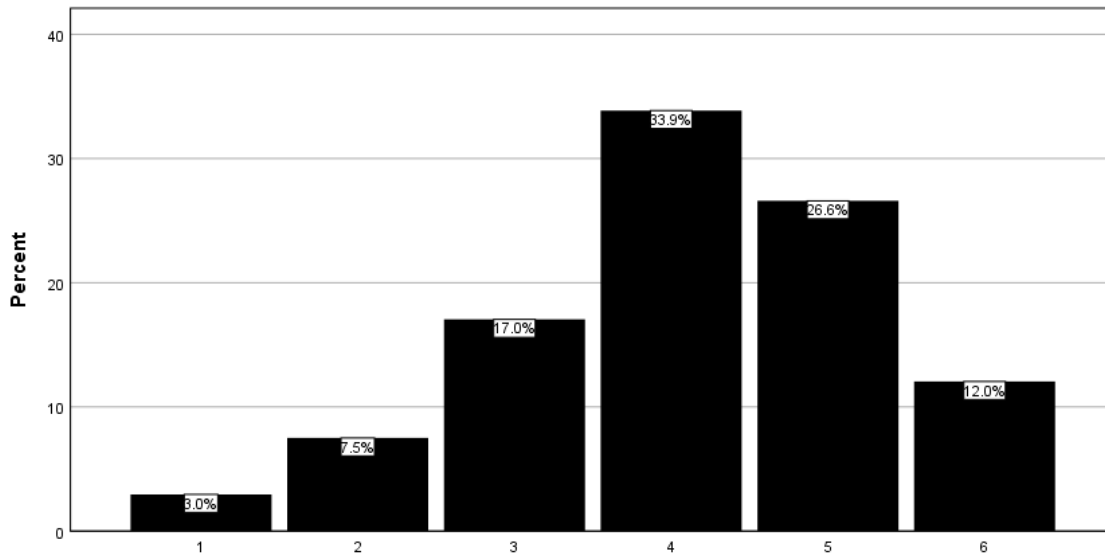


[CMG4] My SMSU education has given me the professional knowledge and skills that I need to help address community issues.

(1=Strongly Disagree; 6=Strongly Agree)

N	Valid	440
	Missing	0
Mean		4.10
Std. Deviation		1.216

		Frequency	Percent	Valid Percent
Valid	1	13	3.0	3.0
	2	33	7.5	7.5
	3	75	17.0	17.0
	4	149	33.9	33.9
	5	117	26.6	26.6
	6	53	12.0	12.0
Total		440	100.0	100.0

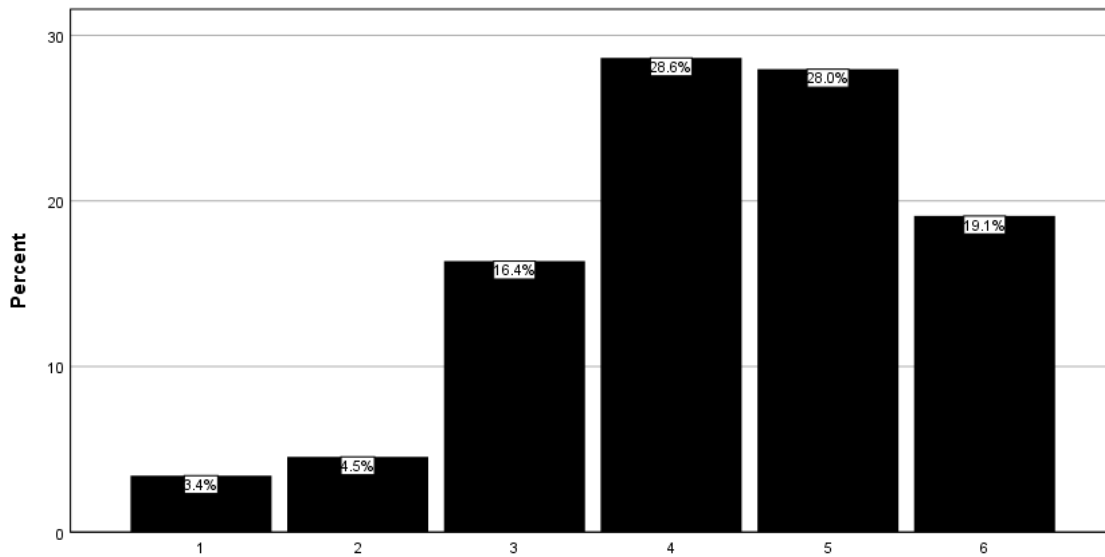


[CMG5] My experiences at SMSU have helped make me a good listener, even when peoples' opinions are different from mine.

(1=Strongly Disagree; 6=Strongly Agree)

N	Valid	440
	Missing	0
Mean		4.30
Std. Deviation		1.267

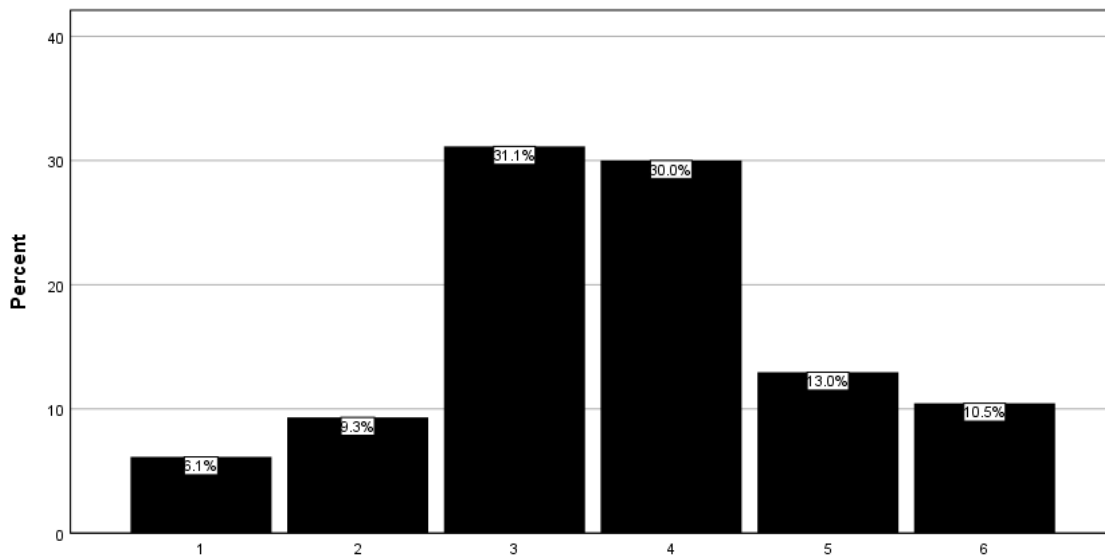
		Frequency	Percent	Valid Percent
Valid	1	15	3.4	3.4
	2	20	4.5	4.5
	3	72	16.4	16.4
	4	126	28.6	28.6
	5	123	28.0	28.0
	6	84	19.1	19.1
	Total	440	100.0	100.0



[CMG6] Based on my experiences at SMSU, I would say that most other students know less about community organizations and volunteer opportunities than I do.
 (1=Strongly Disagree; 6=Strongly Agree)

N	Valid	440
	Missing	0
Mean		3.66
Std. Deviation		1.292

		Frequency	Percent	Valid Percent
Valid	1	27	6.1	6.1
	2	41	9.3	9.3
	3	137	31.1	31.1
	4	132	30.0	30.0
	5	57	13.0	13.0
	6	46	10.5	10.5
	Total	440	100.0	100.0

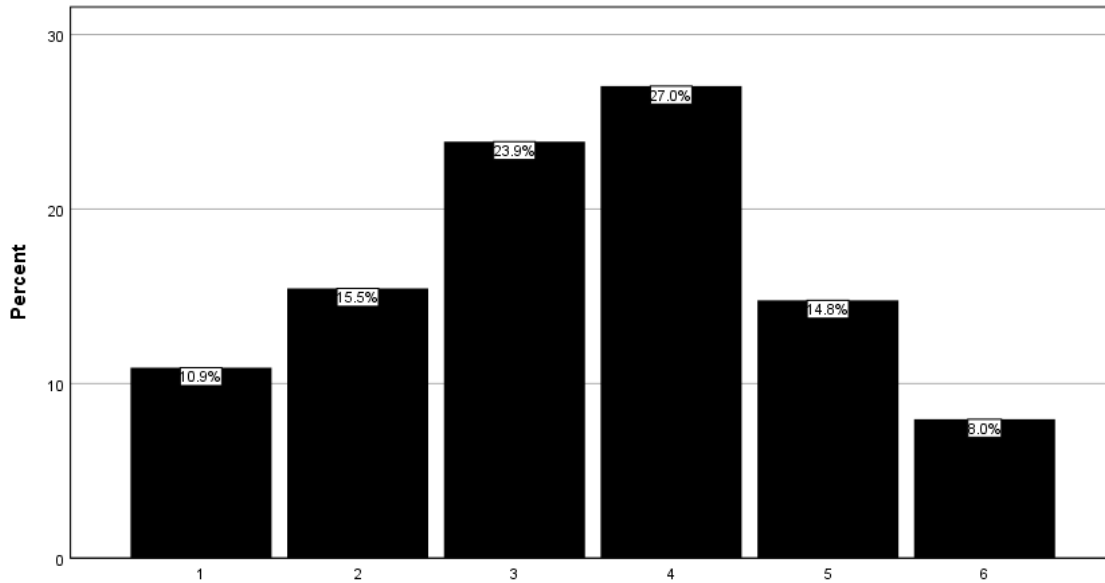


[CMG7] My experiences at SMSU have helped me realize that it is important for me to vote and be politically involved.

(1=Strongly Disagree; 6=Strongly Agree)

N	Valid	440
	Missing	0
Mean		3.43
Std. Deviation		1.409

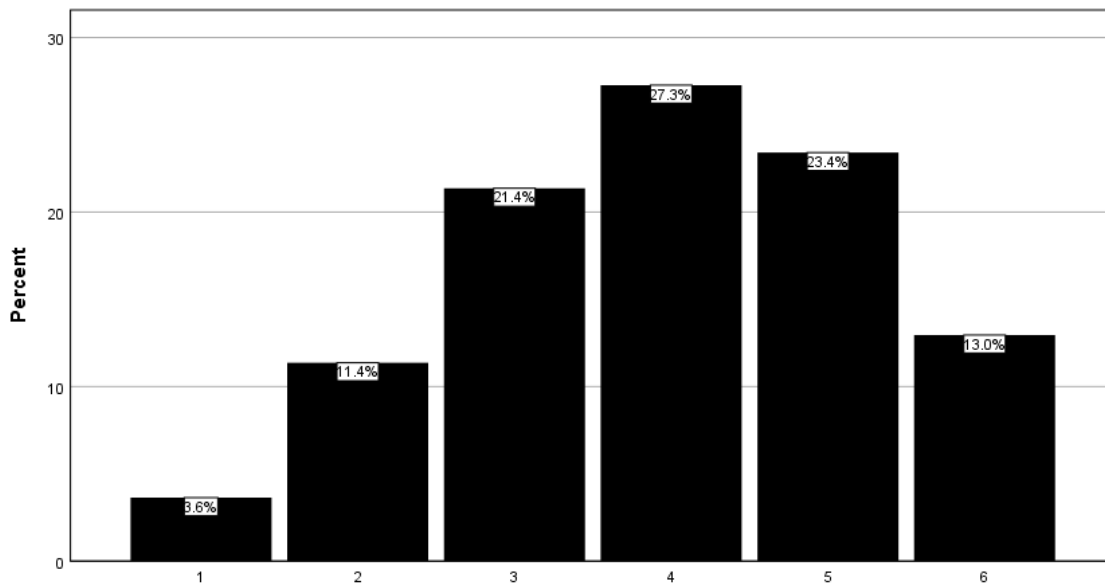
		Frequency	Percent	Valid Percent
Valid	1	48	10.9	10.9
	2	68	15.5	15.5
	3	105	23.9	23.9
	4	119	27.0	27.0
	5	65	14.8	14.8
	6	35	8.0	8.0
	Total	440	100.0	100.0



[CMG8] My education at SMSU has increased my confidence that I can contribute to improving life in my community.
 (1=Strongly Disagree; 6=Strongly Agree)

N	Valid	440
	Missing	0
Mean		3.94
Std. Deviation		1.322

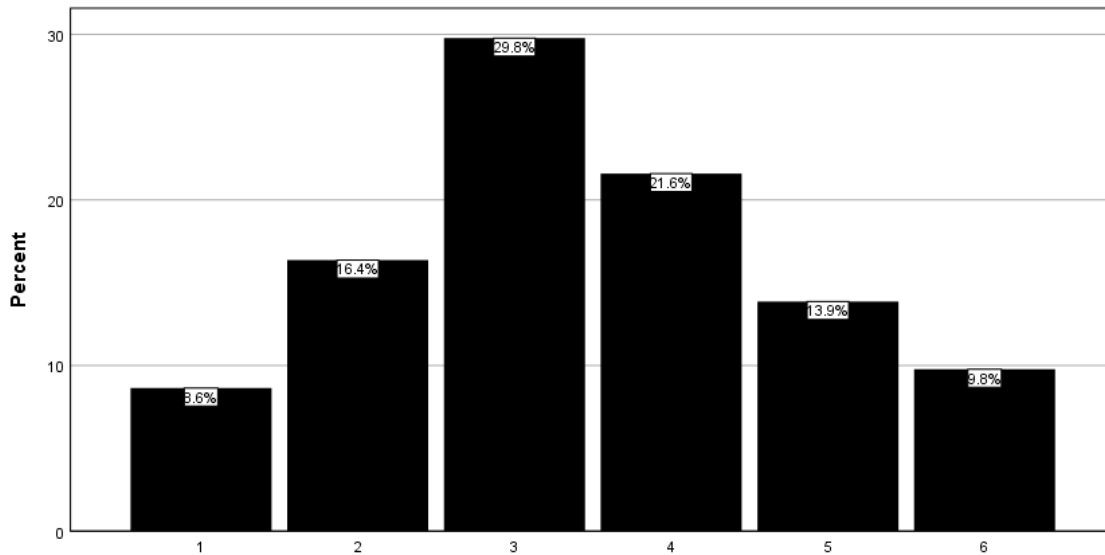
		Frequency	Percent	Valid Percent
Valid	1	16	3.6	3.6
	2	50	11.4	11.4
	3	94	21.4	21.4
	4	120	27.3	27.3
	5	103	23.4	23.4
	6	57	13.0	13.0
	Total		440	100.0



[CMG9] Because of my SMSU education, I believe that my community is enriched by having some cultural or ethnic diversity.
 (1=Strongly Disagree; 6=Strongly Agree)

N	Valid	440
	Missing	0
Mean		3.45
Std. Deviation		1.400

		Frequency	Percent	Valid Percent
Valid	1	38	8.6	8.6
	2	72	16.4	16.4
	3	131	29.8	29.8
	4	95	21.6	21.6
	5	61	13.9	13.9
	6	43	9.8	9.8
	Total	440	100.0	100.0

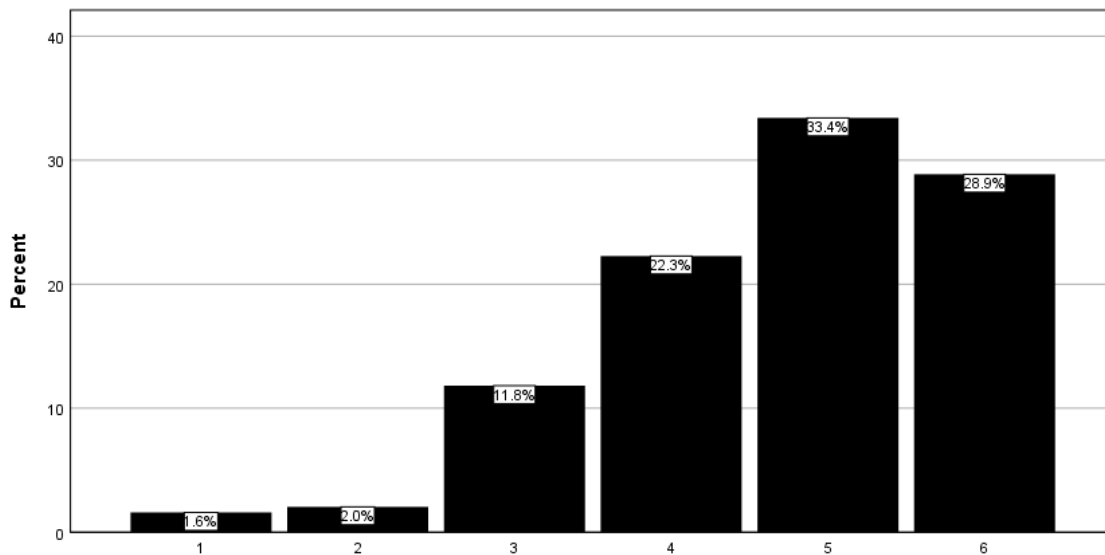


[CMG10] My experiences at SMSU have helped me realize that when members of my group disagree on how to solve a problem, I like to try to build consensus.

(1=Strongly Disagree; 6=Strongly Agree)

N	Valid	440
	Missing	0
Mean		4.70
Std. Deviation		1.157

		Frequency	Percent	Valid Percent
Valid	1	7	1.6	1.6
	2	9	2.0	2.0
	3	52	11.8	11.8
	4	98	22.3	22.3
	5	147	33.4	33.4
	6	127	28.9	28.9
Total		440	100.0	100.0

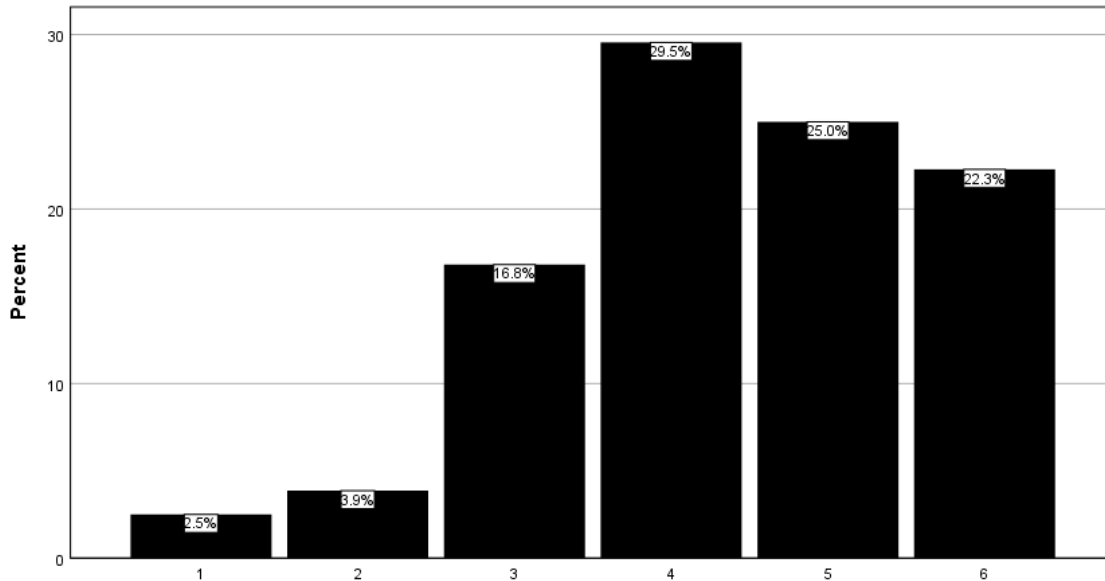


[CMG11] My education at SMSU has made me aware of a number of community issues that need to be addressed.

(1=Strongly Disagree; 6=Strongly Agree)

N	Valid	440
	Missing	0
Mean		4.38
Std. Deviation		1.246

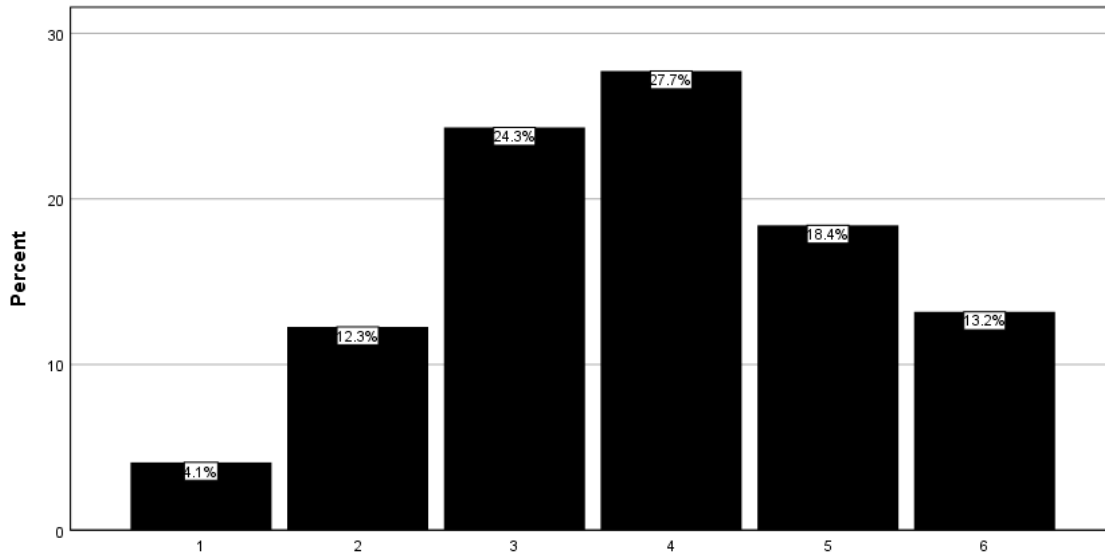
		Frequency	Percent	Valid Percent
Valid	1	11	2.5	2.5
	2	17	3.9	3.9
	3	74	16.8	16.8
	4	130	29.5	29.5
	5	110	25.0	25.0
	6	98	22.3	22.3
Total		440	100.0	100.0



[CMG12] My experiences at SMSU have increased my motivation to participate in advocacy or political action groups after I graduate.
 (1=Strongly Disagree; 6=Strongly Agree)

N	Valid	440
	Missing	0
Mean		3.84
Std. Deviation		1.338

		Frequency	Percent	Valid Percent
Valid	1	18	4.1	4.1
	2	54	12.3	12.3
	3	107	24.3	24.3
	4	122	27.7	27.7
	5	81	18.4	18.4
	6	58	13.2	13.2
	Total		440	100.0

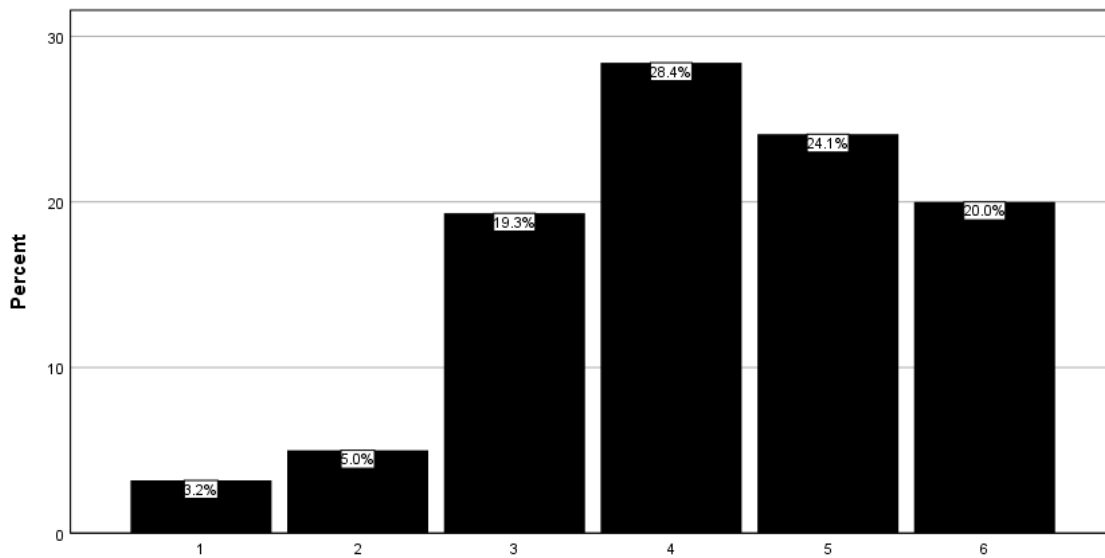


[CMG13] Through my experiences at SMSU, I am very familiar with clubs and organizations that encourage and support community involvement for college students.

(1=Strongly Disagree; 6=Strongly Agree)

N	Valid	440
	Missing	0
Mean		4.25
Std. Deviation		1.289

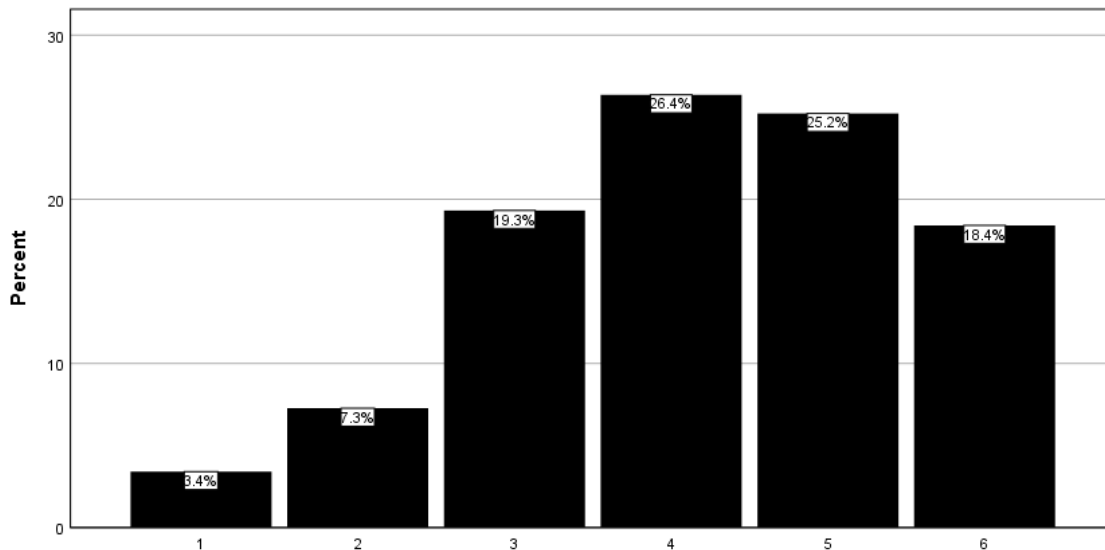
		Frequency	Percent	Valid Percent
Valid	1	14	3.2	3.2
	2	22	5.0	5.0
	3	85	19.3	19.3
	4	125	28.4	28.4
	5	106	24.1	24.1
	6	88	20.0	20.0
	Total	440	100.0	100.0



[CMG14] My SMSU experiences helped me realize that I like to be involved in addressing community issues.
 (1=Strongly Disagree; 6=Strongly Agree)

N	Valid	440
	Missing	0
Mean		4.49
Std. Deviation		1.302

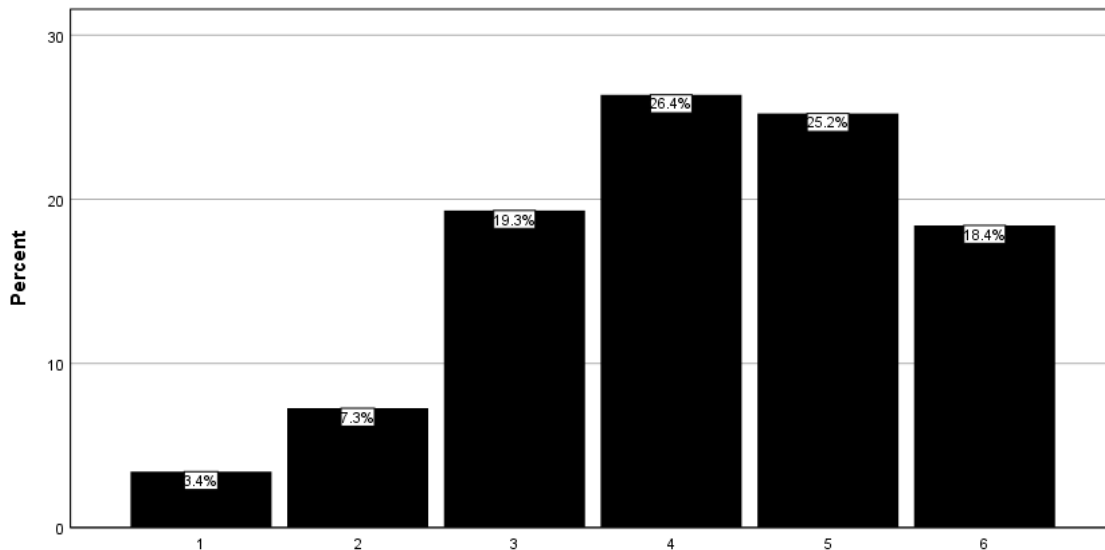
		Frequency	Percent	Valid Percent
Valid	1	10	2.3	2.3
	2	26	5.9	5.9
	3	59	13.4	13.4
	4	110	25.0	25.0
	5	115	26.1	26.1
	6	120	27.3	27.3
Total		440	100.0	100.0



[CMG15] Because of the experiences at SMSU, I believe that having an impact on community problems is within my reach.
 (1=Strongly Disagree; 6=Strongly Agree)

N	Valid	440
	Missing	0
Mean		4.18
Std. Deviation		1.323

		Frequency	Percent	Valid Percent
Valid	1	15	3.4	3.4
	2	32	7.3	7.3
	3	85	19.3	19.3
	4	116	26.4	26.4
	5	111	25.2	25.2
	6	81	18.4	18.4
	Total		440	100.0

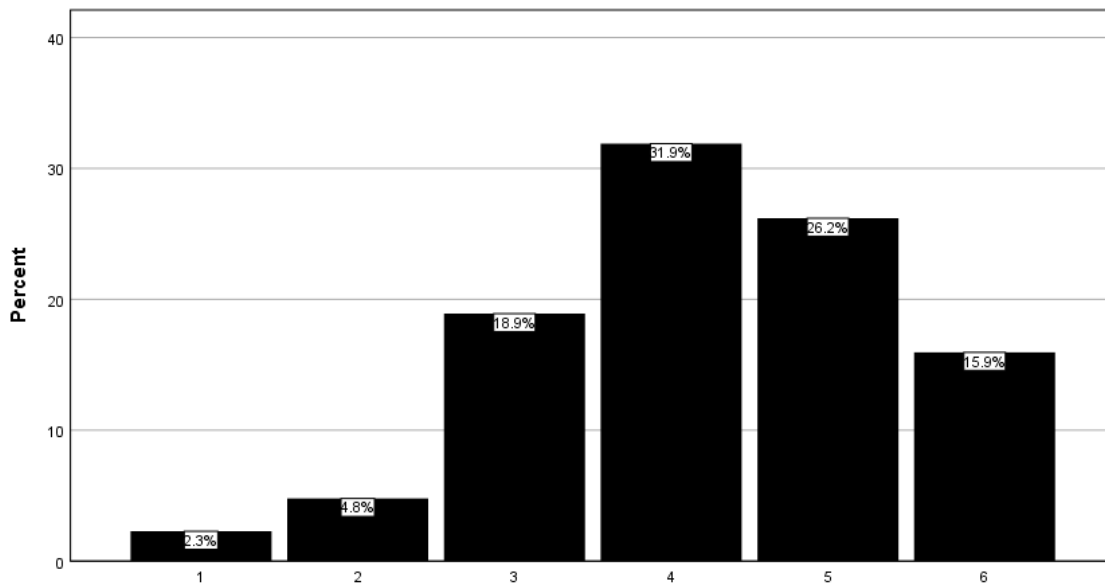


[CMG16] Because of my SMSU experiences, I plan to stay current with the local and national news after I graduate.

(1=Strongly Disagree; 6=Strongly Agree)

N	Valid	439
	Missing	1
Mean		4.23
Std. Deviation		1.199

		Frequency	Percent	Valid Percent
Valid	1	10	2.3	2.3
	2	21	4.8	4.8
	3	83	18.9	18.9
	4	140	31.8	31.9
	5	115	26.1	26.2
	6	70	15.9	15.9
	Total		439	99.8
Missing	System	1	.2	
Total		440	100.0	

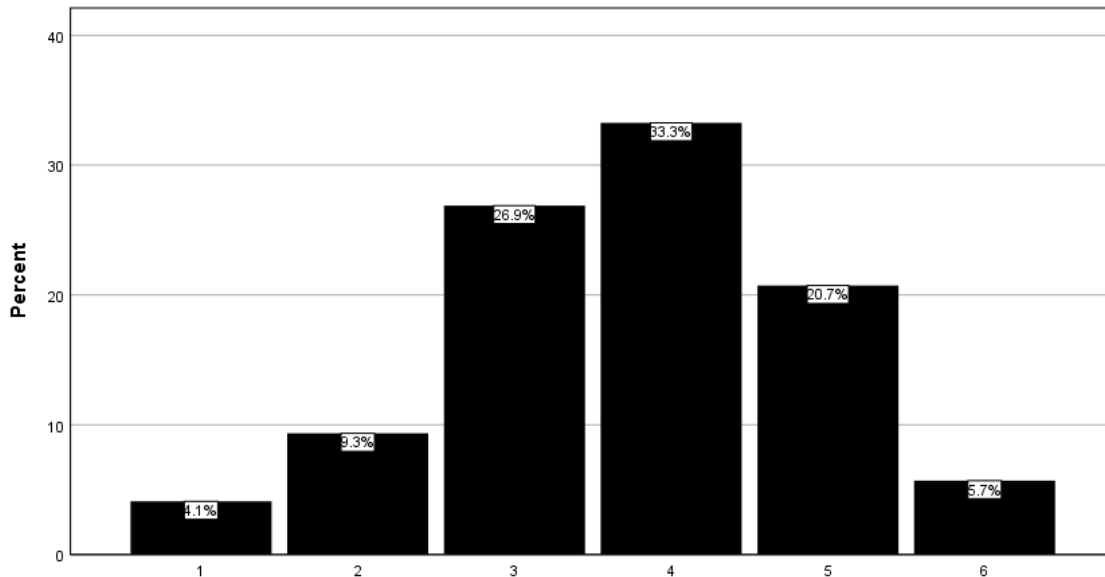


[CMG17] My experiences at SMSU have enabled me to plan or help implement an initiative that improves the community.

(1=Strongly Disagree; 6=Strongly Agree)

N	Valid	439
	Missing	1
Mean		3.74
Std. Deviation		1.176

		Frequency	Percent	Valid Percent
Valid	1	18	4.1	4.1
	2	41	9.3	9.3
	3	118	26.8	26.9
	4	146	33.2	33.3
	5	91	20.7	20.7
	6	25	5.7	5.7
	Total		439	99.8
Missing	System	1	.2	
Total		440	100.0	

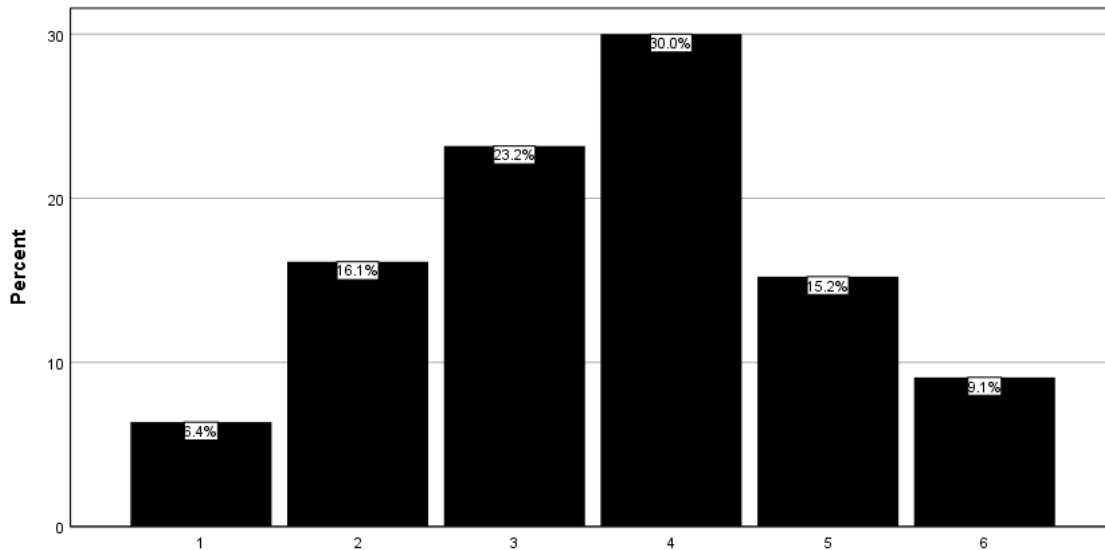


[CMG18] My experiences at SMSU have helped me realize that I prefer to work in settings in which I interact with people who are very different from me.

(1=Strongly Disagree; 6=Strongly Agree)

N	Valid	440
	Missing	0
Mean		3.59
Std. Deviation		1.342

		Frequency	Percent	Valid Percent
Valid	1	28	6.4	6.4
	2	71	16.1	16.1
	3	102	23.2	23.2
	4	132	30.0	30.0
	5	67	15.2	15.2
	6	40	9.1	9.1
Total		440	100.0	100.0

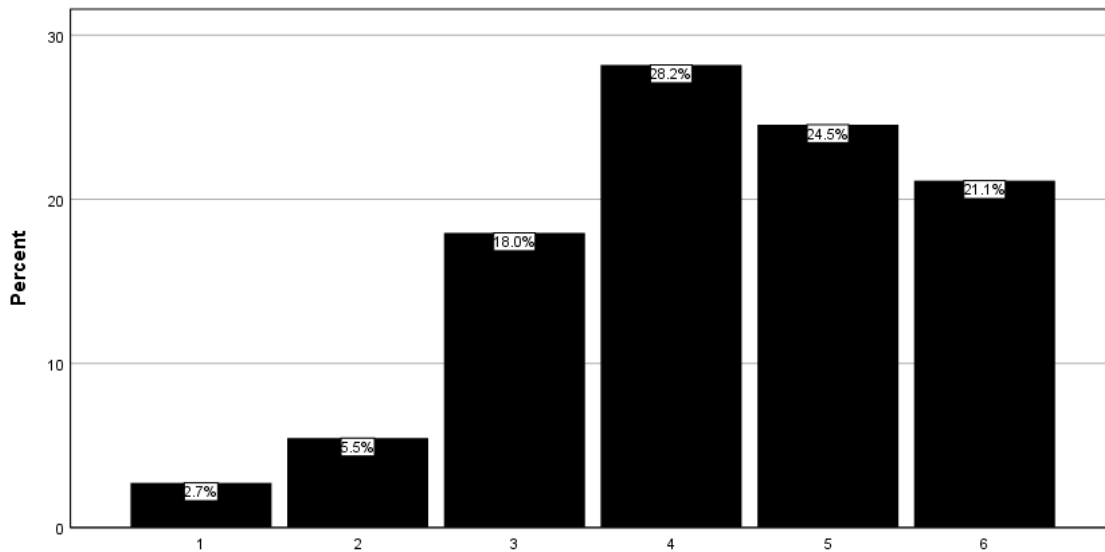


[CMG19] Because of the experiences I have had at SMSU, I feel a deep conviction in my career goals to achieve purposes beyond my own self-interest.

(1=Strongly Disagree; 6=Strongly Agree)

N	Valid	440
	Missing	0
Mean		4.30
Std. Deviation		1.284

		Frequency	Percent	Valid Percent
Valid	1	12	2.7	2.7
	2	24	5.5	5.5
	3	79	18.0	18.0
	4	124	28.2	28.2
	5	108	24.5	24.5
	6	93	21.1	21.1
Total		440	100.0	100.0

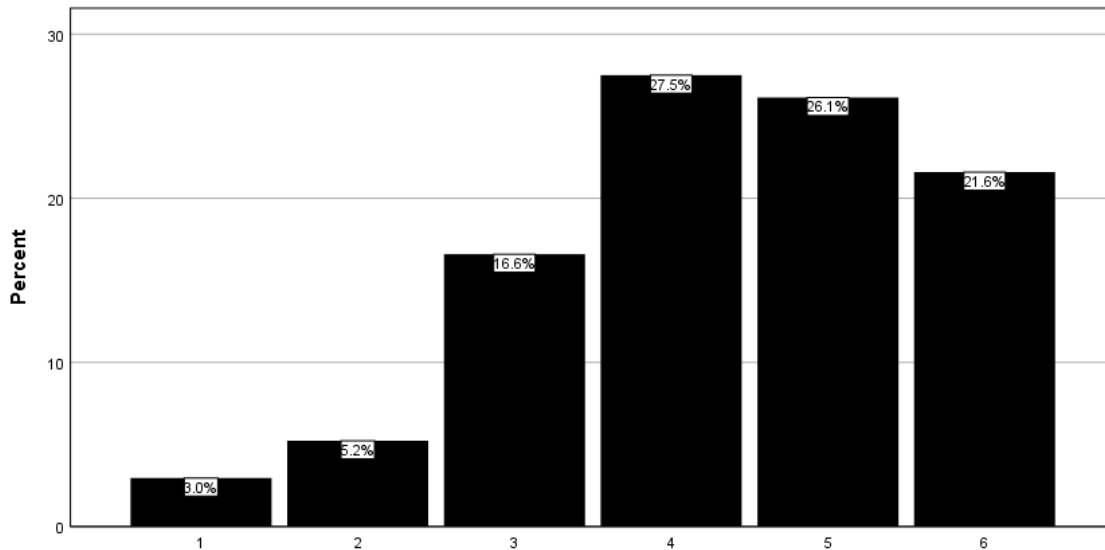


[CMG20] My experiences at SMSU have helped me develop my ability to respond to others with empathy, regardless of their backgrounds.

(1=Strongly Disagree; 6=Strongly Agree)

N	Valid	440
	Missing	0
Mean		4.33
Std. Deviation		1.288

		Frequency	Percent	Valid Percent
Valid	1	13	3.0	3.0
	2	23	5.2	5.2
	3	73	16.6	16.6
	4	121	27.5	27.5
	5	115	26.1	26.1
	6	95	21.6	21.6
Total		440	100.0	100.0

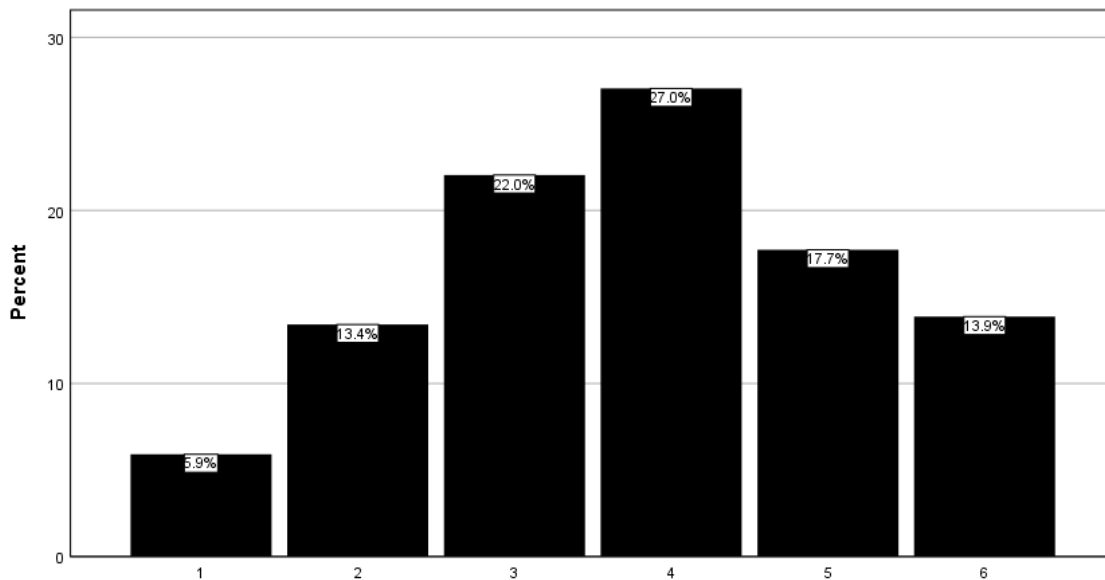


[CMG21] Because of my experiences at SMSU, I intend to be involved in volunteer service after I graduate.

(1=Strongly Disagree; 6=Strongly Agree)

N	Valid	440
	Missing	0
Mean		3.79
Std. Deviation		1.407

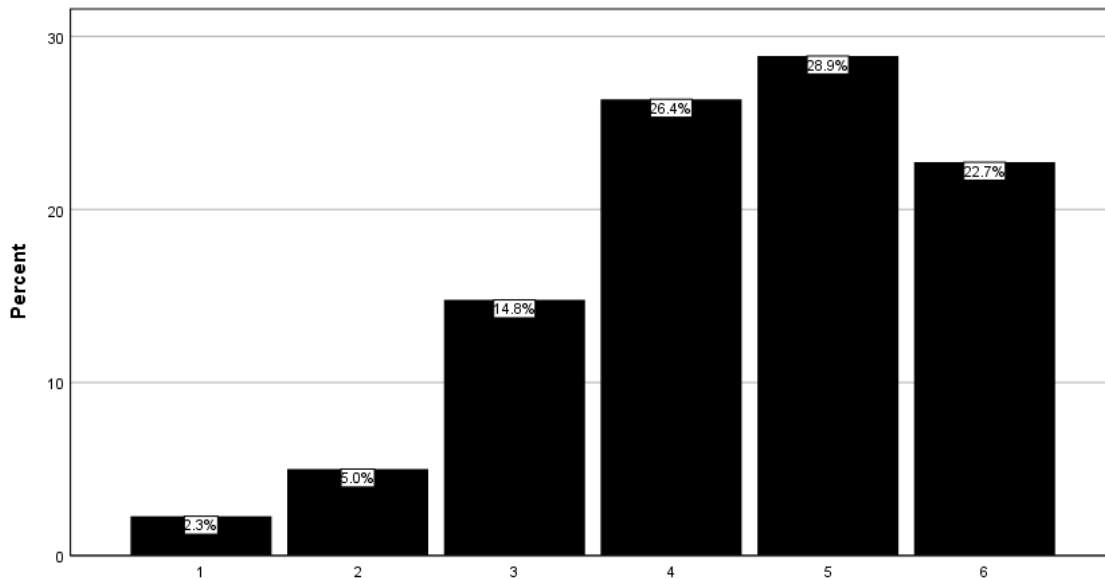
		Frequency	Percent	Valid Percent
Valid	1	26	5.9	5.9
	2	59	13.4	13.4
	3	97	22.0	22.0
	4	119	27.0	27.0
	5	78	17.7	17.7
	6	61	13.9	13.9
	Total		440	100.0



[CMG22] My education at SMSU has motivated me to stay up to date on the current political issues in the community.
 (1=Strongly Disagree; 6=Strongly Agree)

N	Valid	440
	Missing	0
Mean		4.43
Std. Deviation		1.253

		Frequency	Percent	Valid Percent
Valid	1	10	2.3	2.3
	2	22	5.0	5.0
	3	65	14.8	14.8
	4	116	26.4	26.4
	5	127	28.9	28.9
	6	100	22.7	22.7
	Total	440	100.0	100.0

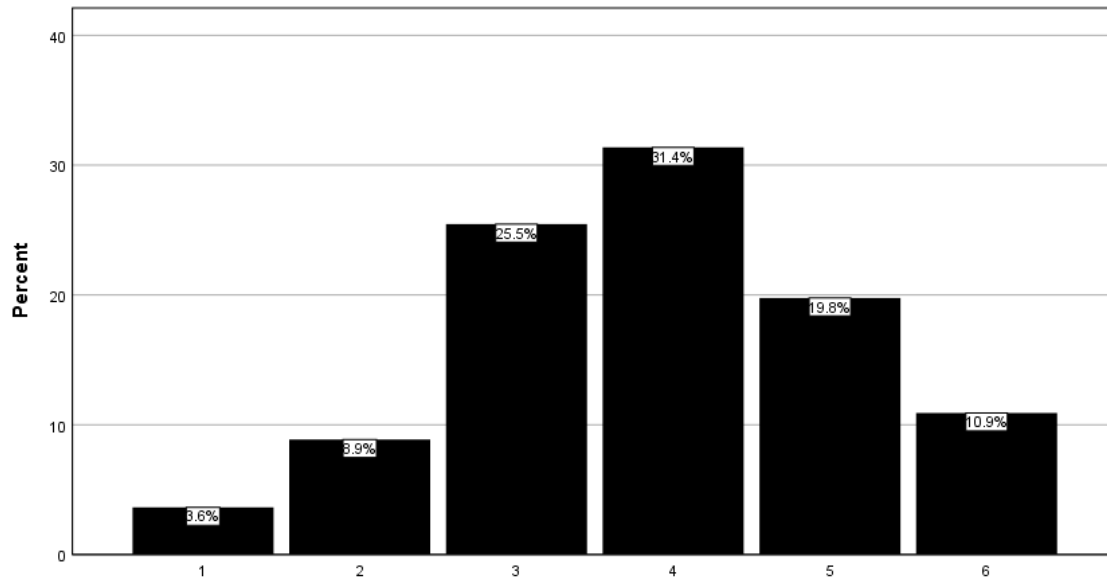


[CMG23] My SMSU education has convinced me that social problems are not too complex for me to help solve.

(1=Strongly Disagree; 6=Strongly Agree)

N	Valid	440
	Missing	0
Mean		3.88
Std. Deviation		1.248

		Frequency	Percent	Valid Percent
Valid	1	16	3.6	3.6
	2	39	8.9	8.9
	3	112	25.5	25.5
	4	138	31.4	31.4
	5	87	19.8	19.8
	6	48	10.9	10.9
	Total	440	100.0	100.0

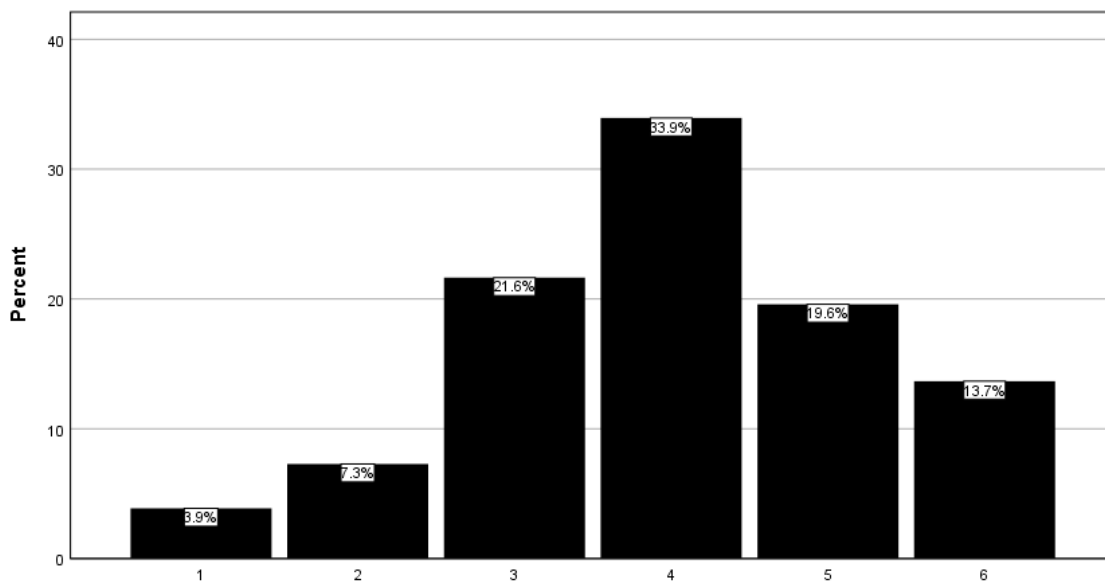


[CMG24] I believe that I have a responsibility to use the knowledge that I have gained at SMSU to serve others.

(1=Strongly Disagree; 6=Strongly Agree)

N	Valid	439
	Missing	1
Mean		3.99
Std. Deviation		1.266

		Frequency	Percent	Valid Percent
Valid	1	17	3.9	3.9
	2	32	7.3	7.3
	3	95	21.6	21.6
	4	149	33.9	33.9
	5	86	19.5	19.6
	6	60	13.6	13.7
	Total		439	99.8
Missing	System	1	.2	
Total		440	100.0	

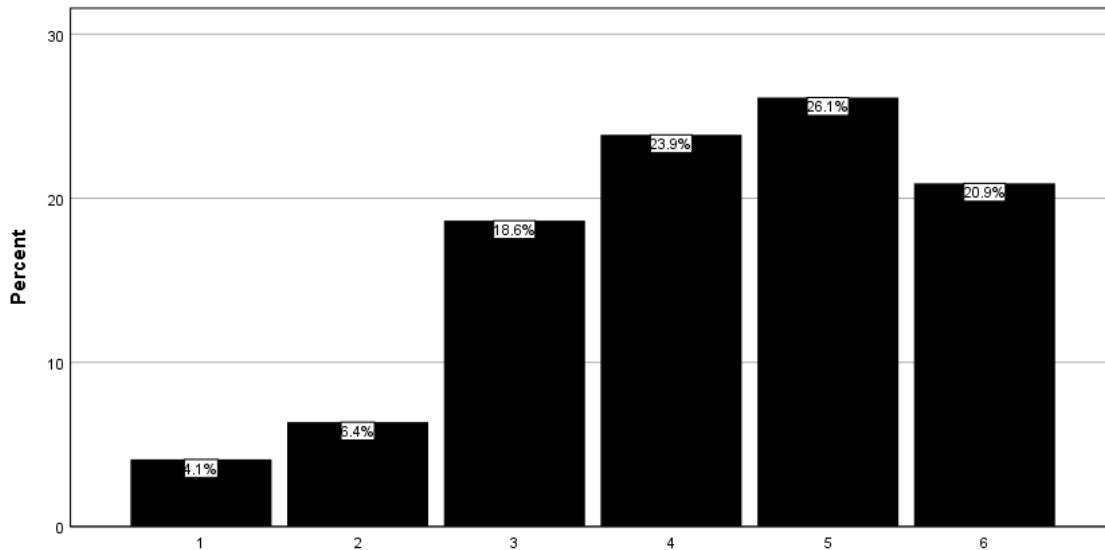


[CMG25] My SMSU education has prepared me to listen to others and understand their perspective on controversial issues.

(1=Strongly Disagree; 6=Strongly Agree)

N	Valid	440
	Missing	0
Mean		4.24
Std. Deviation		1.361

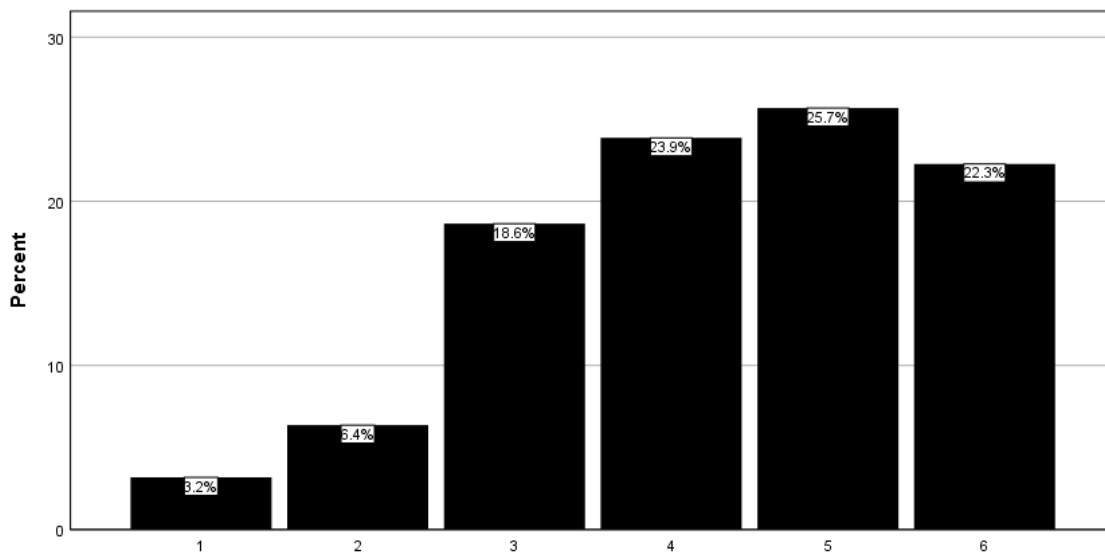
		Frequency	Percent	Valid Percent
Valid	1	18	4.1	4.1
	2	28	6.4	6.4
	3	82	18.6	18.6
	4	105	23.9	23.9
	5	115	26.1	26.1
	6	92	20.9	20.9
	Total	440	100.0	100.0



[CMG26] Based on my experiences at SMSU, I would say that the main purposes of work are to improve society through my career.
 (1=Strongly Disagree; 6=Strongly Agree)

N	Valid	440
	Missing	0
Mean		4.29
Std. Deviation		1.339

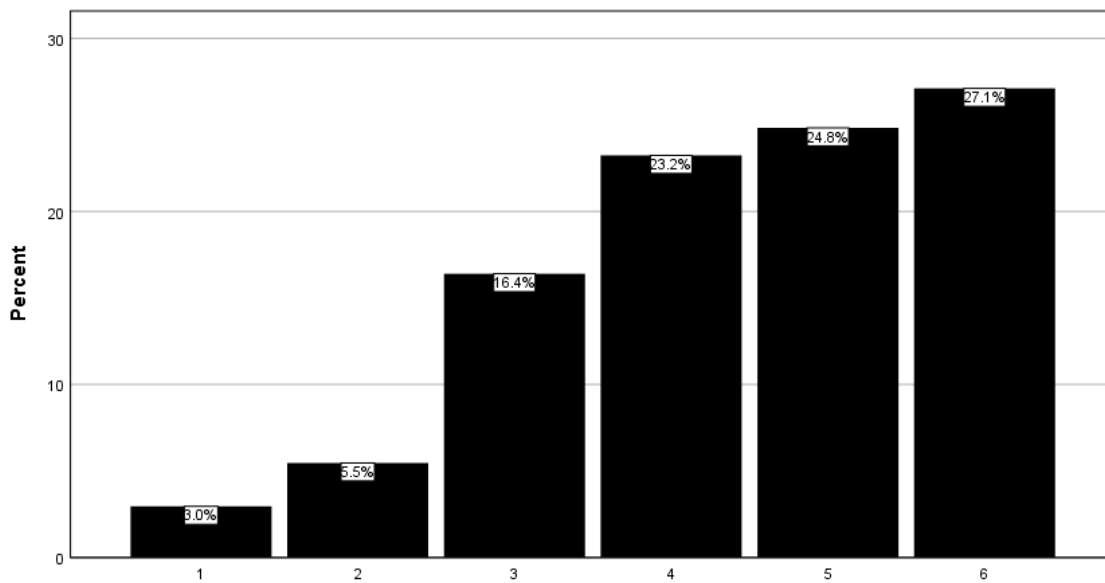
		Frequency	Percent	Valid Percent
Valid	1	14	3.2	3.2
	2	28	6.4	6.4
	3	82	18.6	18.6
	4	105	23.9	23.9
	5	113	25.7	25.7
	6	98	22.3	22.3
	Total	440	100.0	100.0



[CMG27] As a result of my experiences at SMSU, I want to dedicate my career to improving society.
 (1=Strongly Disagree; 6=Strongly Agree)

N	Valid	439
	Missing	1
Mean		4.43
Std. Deviation		1.343

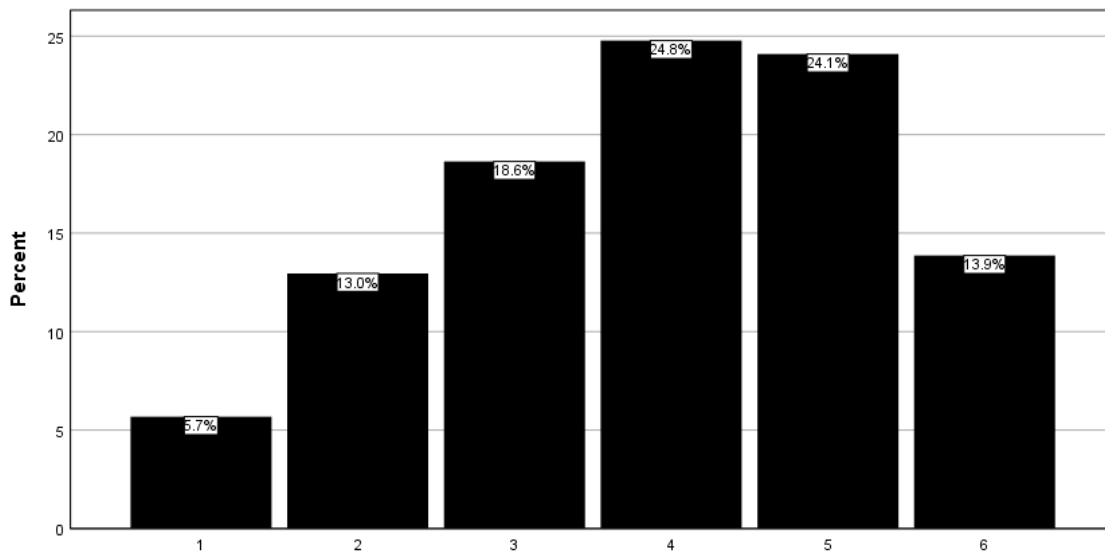
		Frequency	Percent	Valid Percent
Valid	1	13	3.0	3.0
	2	24	5.5	5.5
	3	72	16.4	16.4
	4	102	23.2	23.2
	5	109	24.8	24.8
	6	119	27.0	27.1
	Total		439	99.8
Missing	System	1	.2	
Total		440	100.0	



[CMG28] After being a student at SMSU, I feel confident that I will be able to apply what I have learned in my classes to solve real problems in society.
 (1=Strongly Disagree; 6=Strongly Agree)

N	Valid	440
	Missing	0
Mean		3.90
Std. Deviation		1.416

		Frequency	Percent	Valid Percent
Valid	1	25	5.7	5.7
	2	57	13.0	13.0
	3	82	18.6	18.6
	4	109	24.8	24.8
	5	106	24.1	24.1
	6	61	13.9	13.9
Total		440	100.0	100.0

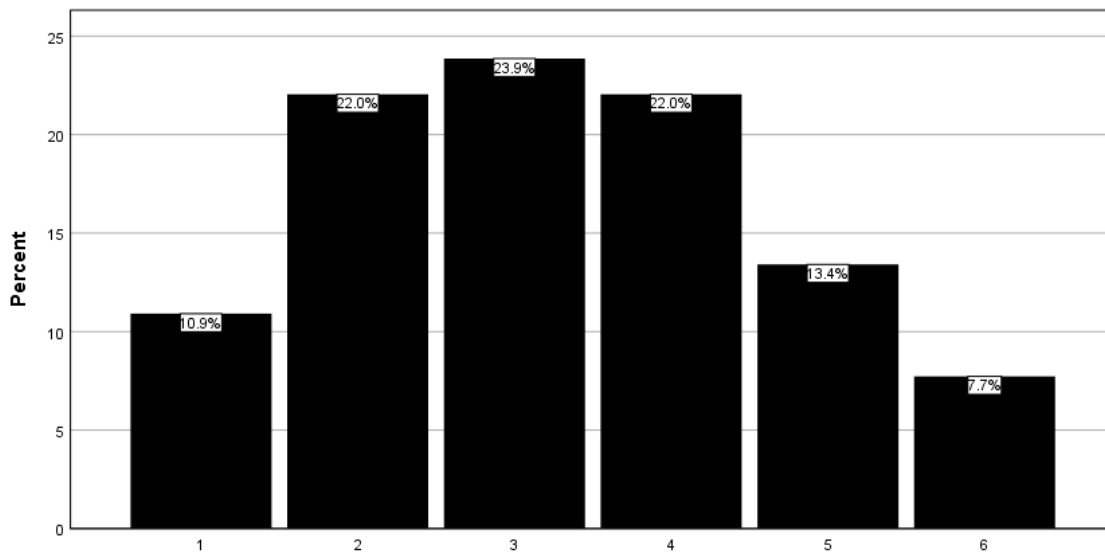


[CMG29] When discussing controversial social issues during my time at SMSU, I have often been able to persuade others to agree with my point of view.

(1=Strongly Disagree; 6=Strongly Agree)

N	Valid	440
	Missing	0
Mean		3.28
Std. Deviation		1.426

		Frequency	Percent	Valid Percent
Valid	1	48	10.9	10.9
	2	97	22.0	22.0
	3	105	23.9	23.9
	4	97	22.0	22.0
	5	59	13.4	13.4
	6	34	7.7	7.7
	Total	440	100.0	100.0

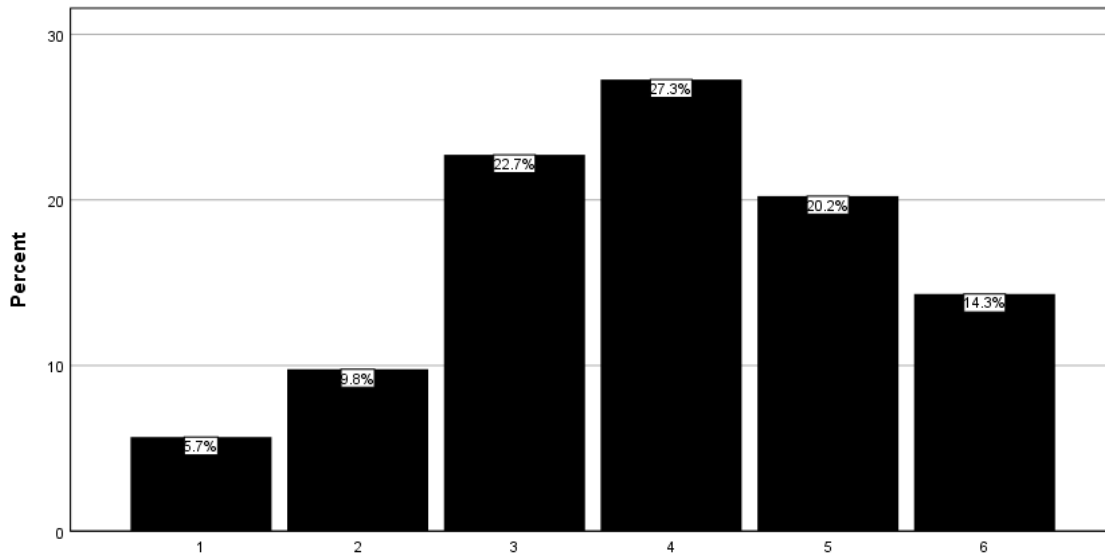


[CMG30] My SMSU experiences have helped me develop a sense of who I am, which now includes a sincere desire to be of service to others.

(1=Strongly Disagree; 6=Strongly Agree)

N	Valid	440
	Missing	0
Mean		3.90
Std. Deviation		1.378

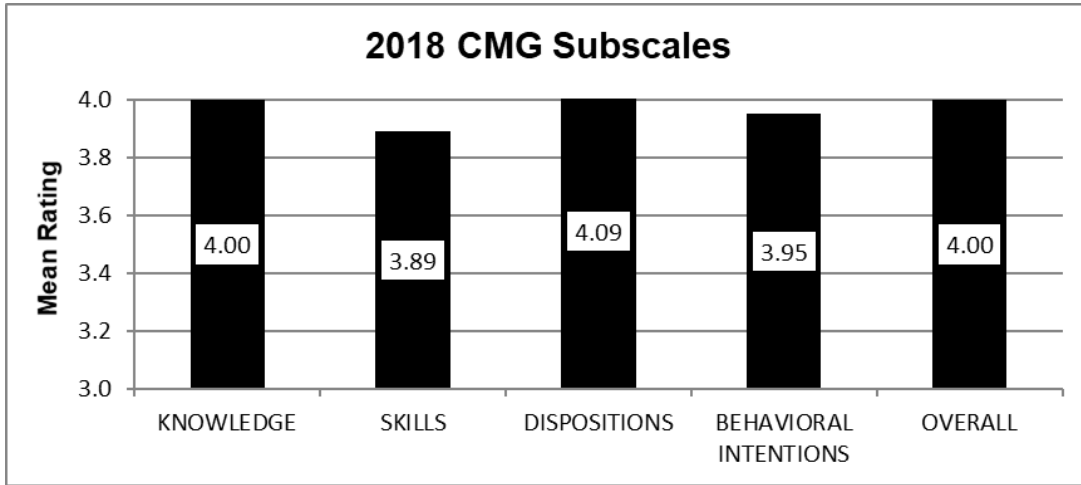
		Frequency	Percent	Valid Percent
Valid	1	25	5.7	5.7
	2	43	9.8	9.8
	3	100	22.7	22.7
	4	120	27.3	27.3
	5	89	20.2	20.2
	6	63	14.3	14.3
	Total	440	100.0	100.0



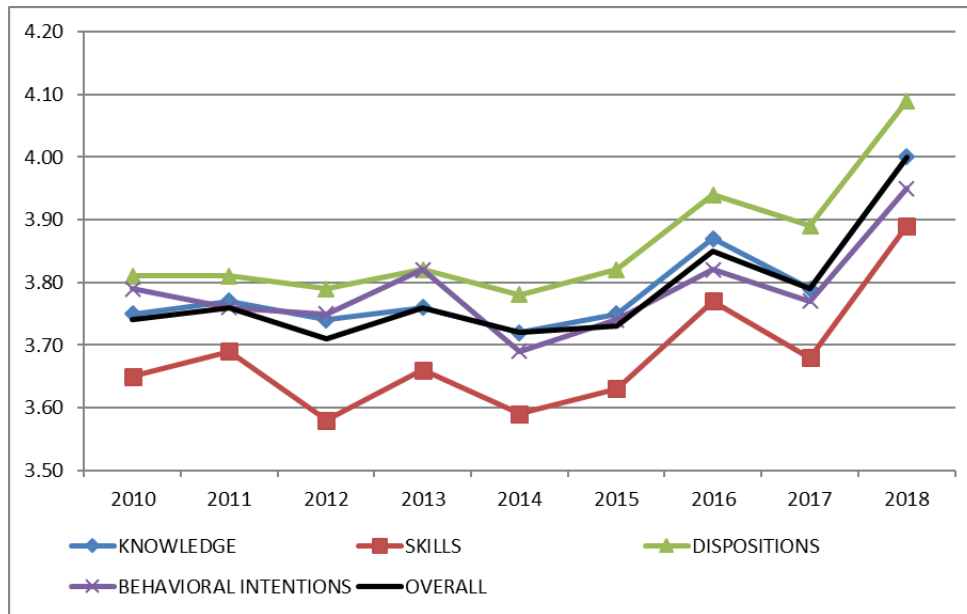
CMG Subscale Scores

Summary of Ratings and Trend Analysis

(1=Strongly Disagree; 6=Strongly Agree)



Subscale	2010	2011	2012	2013	2014	2015	2016	2017	2018
KNOWLEDGE	3.75	3.77	3.74	3.76	3.72	3.75	3.87	3.79	4.00
SKILLS	3.65	3.69	3.58	3.66	3.59	3.63	3.77	3.68	3.89
DISPOSITIONS	3.81	3.81	3.79	3.82	3.78	3.82	3.94	3.89	4.09
BEHAVIORAL INTENTIONS	3.79	3.76	3.75	3.82	3.69	3.74	3.82	3.77	3.95
OVERALL	3.74	3.76	3.71	3.76	3.72	3.73	3.85	3.79	4.00

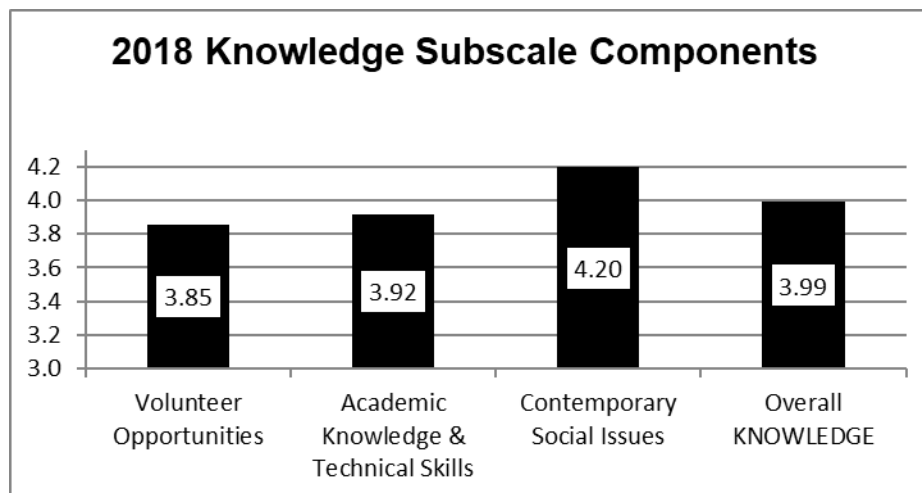


Components for each subscale are presented on subsequent pages. The Behavioral Intentions subscale has no components.

2018 Knowledge Subscale

(1=Strongly Disagree; 6=Strongly Agree)

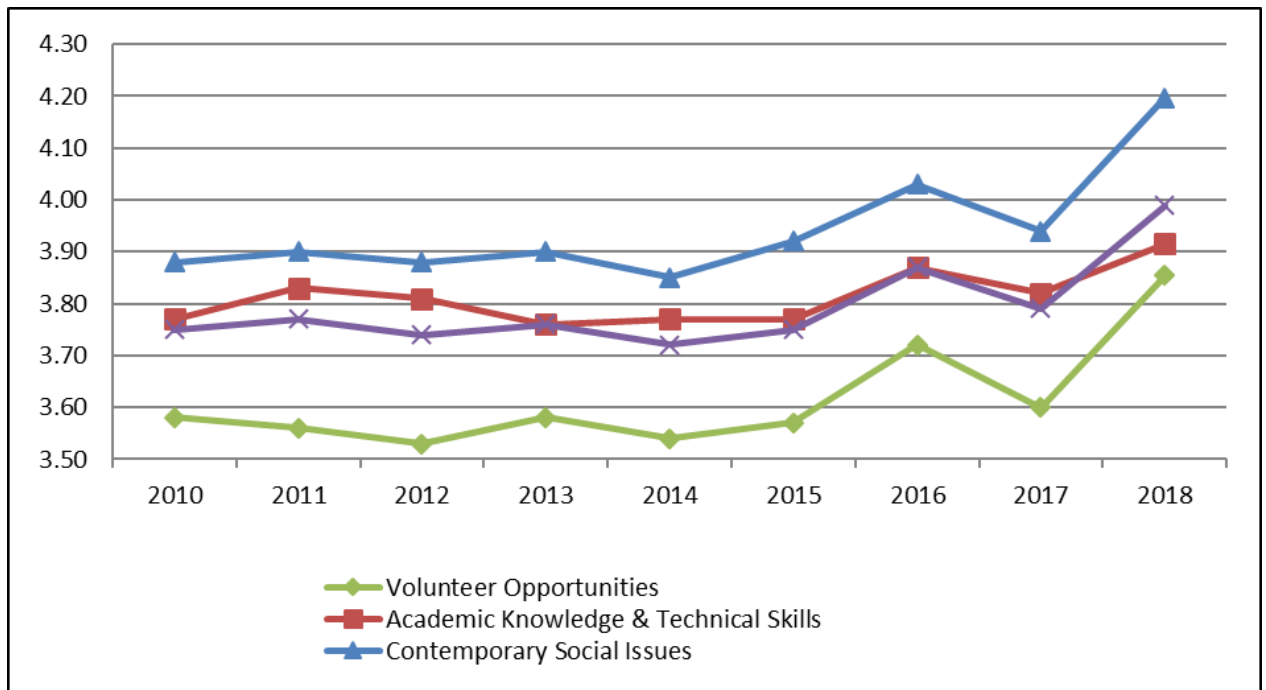
Survey Item	Mean
Volunteer Opportunities	
[CMG1] My experiences at SMSU have helped me know a lot about opportunities to become involved in the community.	3.65
[CMG6] Based on my experience at SMSU, I would say that most other students know less about community organizations and volunteer opportunities than I do.	3.66
[CMG13] Through my experiences at SMSU, I am very familiar with clubs and organizations that encourage and support community involvement for college students.	4.25
Academic Knowledge and Technical Skills	
[CMG4] My SMSU education has given me the professional knowledge and skills that I need to help address community issues.	4.10
[CMG17] My experiences at SMSU have enabled me to plan or help implement an initiative that improves the community.	3.74
[CMG28] After being a student at SMSU, I feel confident that I will be able to apply what I have learned in my classes to solve real problems in society.	3.90
Contemporary Social Issues	
[CMG3] My experiences at SMSU have prepared me to write a letter to the newspaper or community leaders about a community issue.	3.79
[CMG11] My education at SMSU has made me aware of a number of community issues that need to be addressed.	4.38
[CMG22] My education at SMSU has motivated me to stay up to date on the current political issues in the community	4.43



Knowledge Subscale Trend Analysis

(1=Strongly Disagree; 6=Strongly Agree)

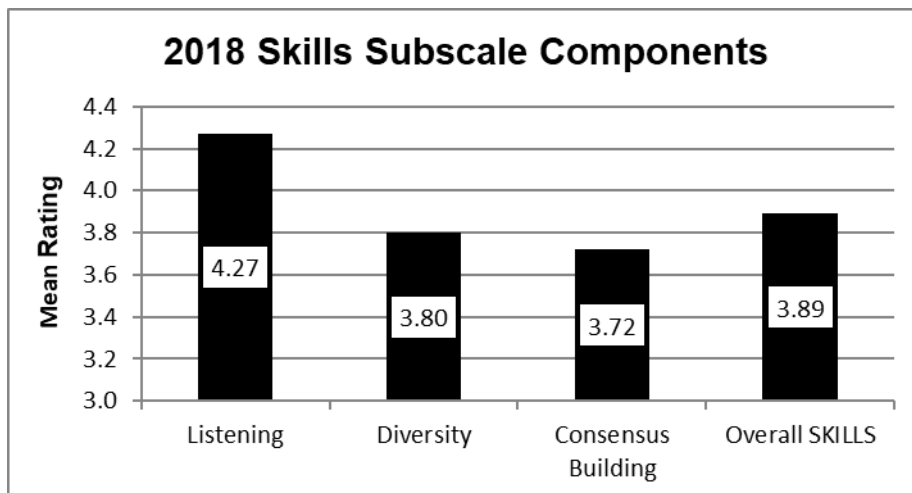
Subscale Components	2010	2011	2012	2013	2014	2015	2016	2017	2018
Volunteer Opportunities	3.58	3.56	3.53	3.58	3.54	3.57	3.72	3.60	3.85
Academic Knowledge and Technical Skills	3.77	3.83	3.81	3.76	3.77	3.77	3.87	3.82	3.92
Contemporary Social Issues	3.88	3.90	3.88	3.90	3.85	3.92	4.03	3.94	4.20
Overall KNOWLEDGE	3.75	3.77	3.74	3.76	3.72	3.75	3.87	3.79	3.99



2018 Skills Subscale

(1=Strongly Disagree; 6=Strongly Agree)

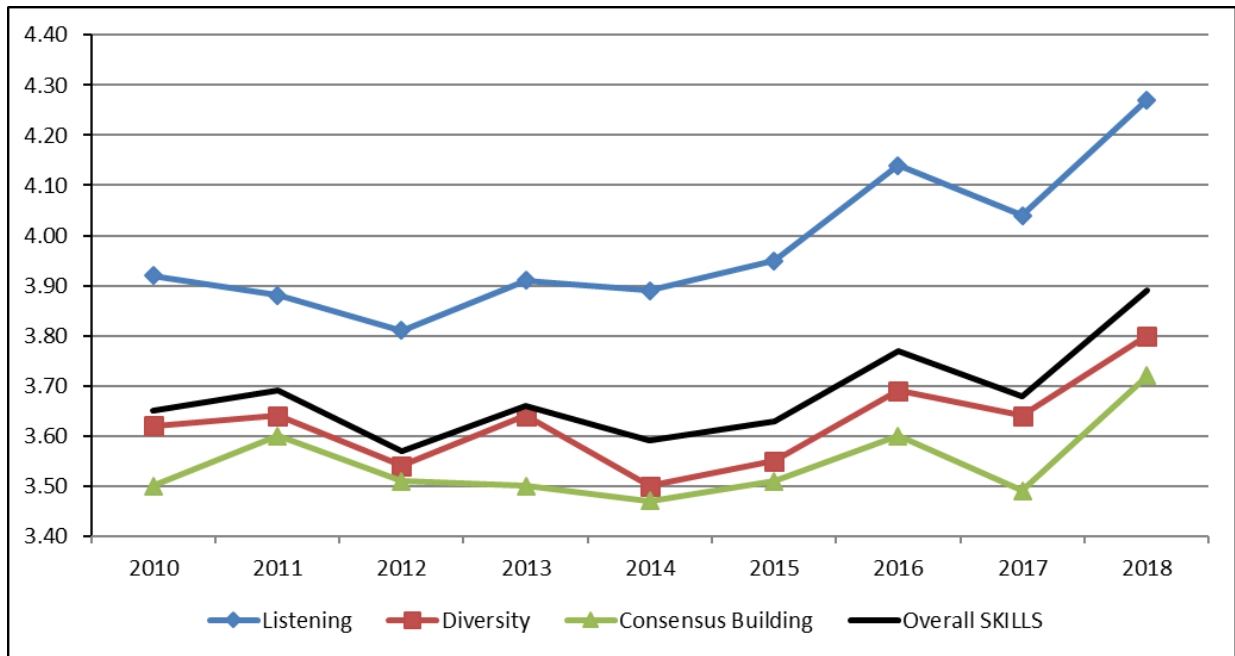
Survey Item	Mean
Listening	
[CMG5] My experiences at SMSU have helped make me a good listener, even when peoples' opinions are different from mine.	4.30
[CMG25] My SMSU education has prepared me to listen to others and understand their perspective on controversial issues.	4.24
Diversity	
[CMG9] My SMSU education has helped me appreciate how my community is enriched by having some cultural or ethnic diversity.	3.45
[CMG18] My experiences at SMSU have helped me realize that I prefer to work in settings in which I interact with people who are different from me.	3.58
[CMG20] My experiences at SMSU have helped me develop my ability to respond to others with empathy, regardless of their backgrounds.	4.33
Consensus Building	
[CMG2] As a result of my experiences at SMSU, other students who know me well would describe me as a person who can discuss controversial social issues with civility and respect.	3.18
[CMG10] My experiences at SMSU have helped me realize that when members of my group disagree on how to solve a problem, I like to try to build consensus.	4.70
[CMG29] When discussing controversial social issues at SMSU, I have often been able to persuade others to agree with my point of view.	3.28



Skills Subscale Trend Analysis

(1=Strongly Disagree; 6=Strongly Agree)

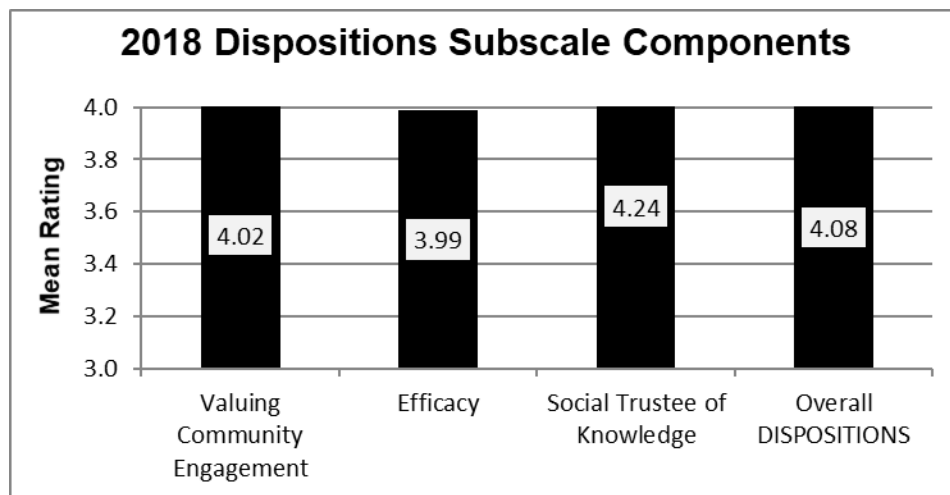
Subscale Components	2010	2011	2012	2013	2014	2015	2016	2017	2018
Listening	3.92	3.88	3.81	3.91	3.89	3.95	4.14	4.04	4.27
Diversity	3.62	3.64	3.54	3.64	3.50	3.55	3.69	3.64	3.8
Consensus Building	3.50	3.60	3.51	3.50	3.47	3.51	3.60	3.49	3.72
Overall SKILLS	3.65	3.69	3.57	3.66	3.59	3.63	3.77	3.68	3.99



2018 Dispositions Subscale

(1=Strongly Disagree; 6=Strongly Agree)

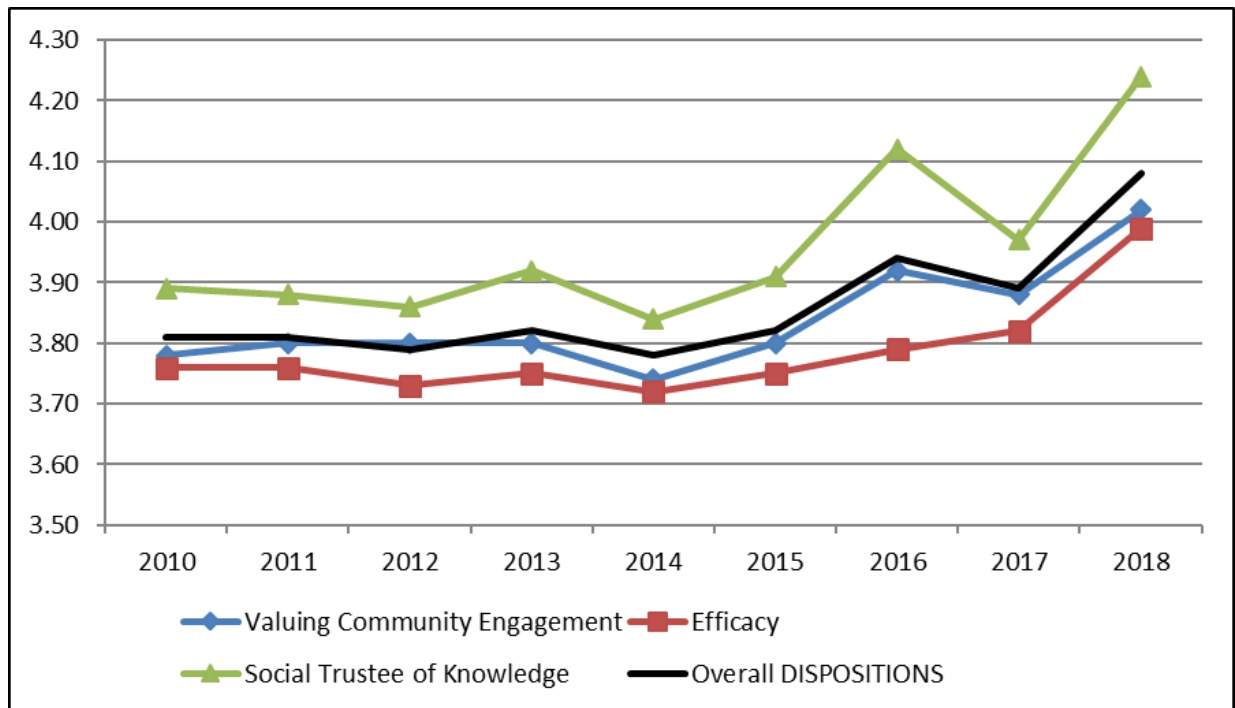
Survey Item	Mean
Valuing Community Engagement	
[CMG7] My experiences at SMSU have helped me realize that it is important for me to vote and be politically involved.	3.43
[CMG14] My SMSU experiences helped me to realize that I like to be involved in addressing community issues.	4.49
[CMG26] Based on my experiences at SMSU, I would say that the main purposes of work are to improve society through my career.	4.29
[CMG30] My SMSU experiences have helped me develop my sense of who I am, which now includes a sincere desire to be of service to others.	3.90
Efficacy	
[CMG8] My education at SMSU has increased my confidence that I can contribute to improving life in my community.	3.94
[CMG15] Because of my experiences at SMSU, I believe that having an impact on community problems is within my reach.	4.18
[CMG23] My SMSU education has convinced me that social problems are <u>not</u> too complex for me to help solve.	3.88
Social Trustee of Knowledge	
[CMG19] Because of the experiences I had at SMSU, I feel a deep conviction in my career goals to achieve purposes that are beyond my own self-interest.	4.30
[CMG24] I believe that I have a responsibility to use the knowledge I have gained at SMSU to serve others.	3.99
[CMG27] As a result of my experiences at SMSU, I want to dedicate my career to improving society.	4.43



Dispositions Subscale Trend Analysis

(1=Strongly Disagree; 6=Strongly Agree)

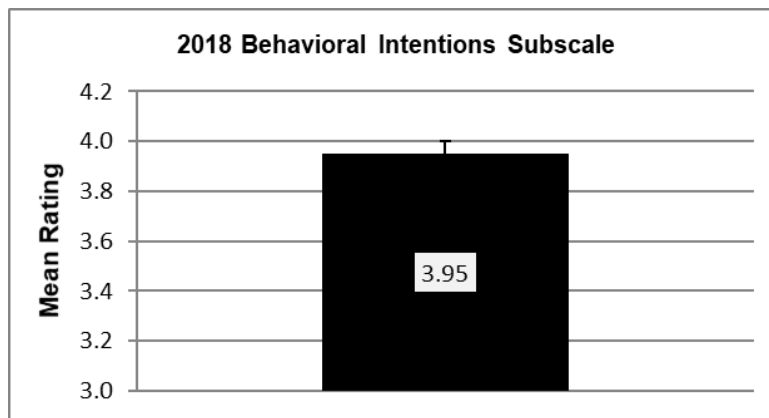
Subscale Components	2010	2011	2012	2013	2014	2015	2016	2017	2018
Valuing Community Engagement	3.78	3.80	3.80	3.80	3.74	3.80	3.92	3.88	4.02
Efficacy	3.76	3.76	3.73	3.75	3.72	3.75	3.79	3.82	3.99
Social Trustee of Knowledge	3.89	3.88	3.86	3.92	3.84	3.91	4.12	3.97	4.24
Overall DISPOSITIONS	3.81	3.81	3.79	3.82	3.78	3.82	3.94	3.89	4.08



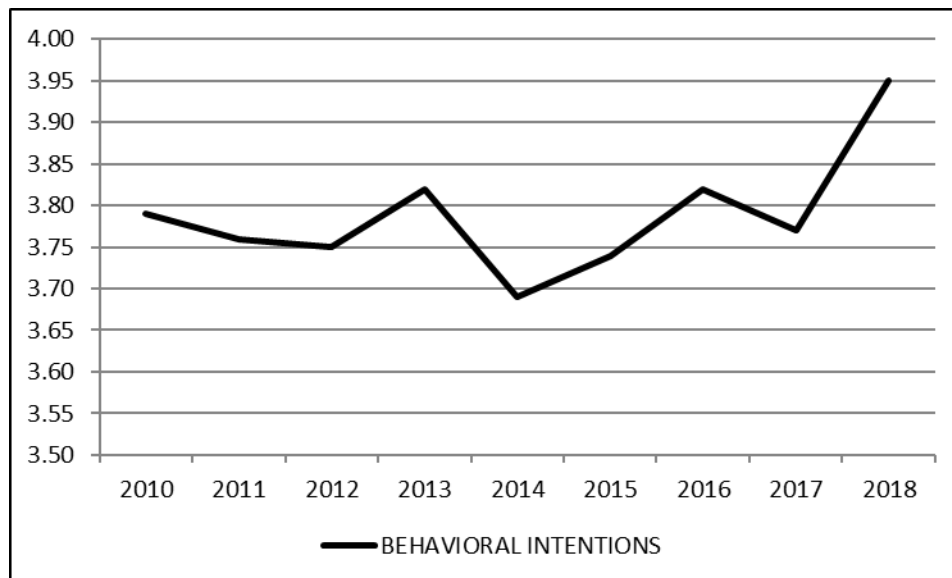
2018 Behavioral Intentions Subscale

(1=Strongly Disagree; 6=Strongly Agree)

Survey Item	Mean
[CMG12] My experiences at SMSU have increased my motivation to participate in advocacy or political action groups after I graduate.	3.84
[CMG16] Because of my SMSU experiences, I plan to stay current with the local and national news after I graduate.	4.23
[CMG21] Because of my experiences at SMSU, I intend to be involved in volunteer service after I graduate.	3.79



Subscale	2010	2011	2012	2013	2014	2015	2016	2017	2018
BEHAVIORAL INTENTIONS	3.79	3.76	3.75	3.82	3.69	3.74	3.82	3.77	3.95



Section IV: Responsibility and Commitment

Section IV of the Civic Engagement Survey consisted of a single scale item and an open-ended prompt regarding students' feelings of responsibility and commitment to engage in civic engagement after leaving SMSU.

The scale item in this section of the survey was preceded by the following prompt:

Please indicate whether you agree or disagree with the following. 1= Strongly Disagree 6= Strongly Agree

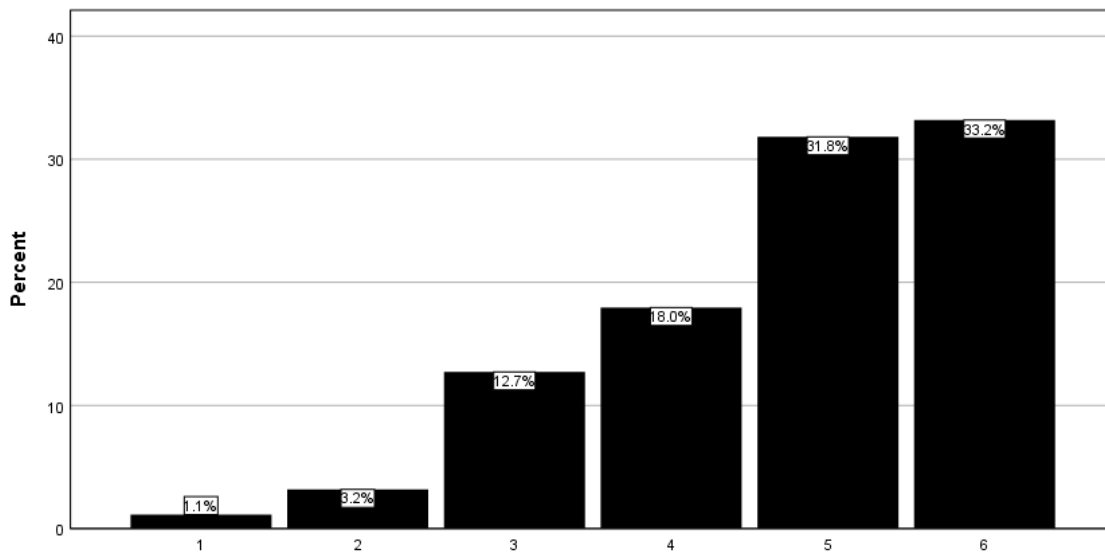
Data for the scale item are presented here along with a trend analysis covering the last seven academic years.

An additional prompt was included at the end of the survey to allow students to make other general comments.

I have the responsibility and commitment to use the knowledge and skills I have gained through my education to collaborate with others to improve society.
 (1=Strongly Disagree; 6=Strongly Agree)

N	Valid	440
	Missing	0
Mean		4.76
Std. Deviation		1.197

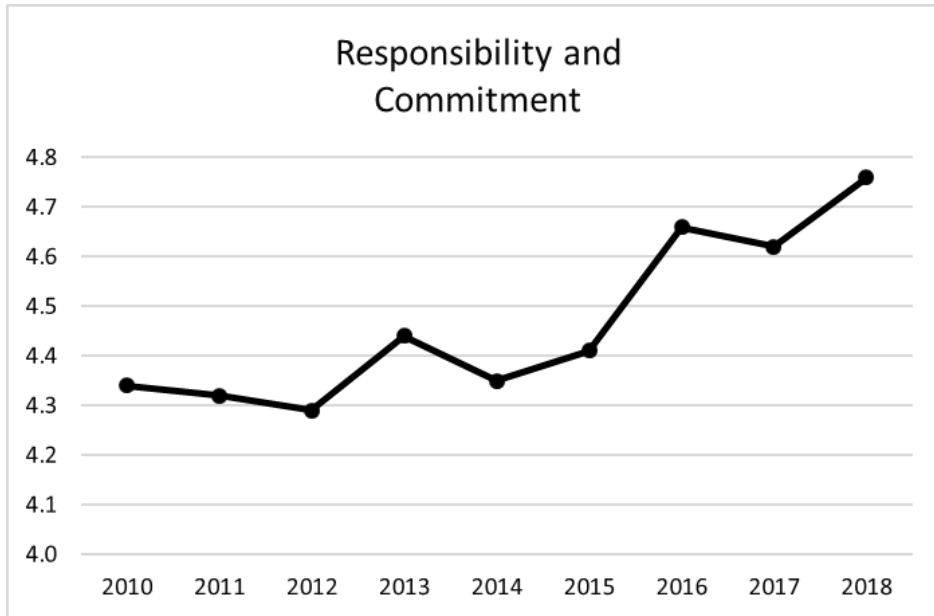
		Frequency	Percent	Valid Percent
Valid	1	5	1.1	1.1
	2	14	3.2	3.2
	3	56	12.7	12.7
	4	79	18.0	18.0
	5	140	31.8	31.8
	6	146	33.2	33.2
	Total	440	100.0	100.0



Responsibility and Commitment Trend Analysis

(1=Strongly Disagree; 6=Strongly Agree)

	2010	2011	2012	2013	2014	2015	2016	2017	2018
Mean	4.34	4.32	4.29	4.44	4.35	4.41	4.66	4.62	4.76



Please describe the ways in which you agree or disagree with this statement and provide a clear explanation of your opinions.

Participant Responses
I've had a good experience at SMSU and feel that I use skills that I've learned every day.
My career now and going forward is focused on improving society. I work at DELETED as a business analyst, but I am also involved in the DELETED program and focus on helping those around me to improve their lives by becoming healthier. I also participate in DELETED and many youth sports organizations. I help run the DELETED . It is important to be involved in the community!
Use my knowledge to help others achieve their dreams
I feel as if I learned so much during my time at SMSU. I want to make society a better place by using the knowledge that I have gained.
Using my skills and knowledge to help better the community is very important for us to all learn from each other to grow as one community.
Any skills and experiences that one gains throughout college, in one way or another, builds a better character. This better character should be used to improve the society that one is in, whether it be through volunteering or sharing these experiences.
With my degree i plan to coach baseball players leading to getting kids active and working out which will help with the problem of obesity in young kids.
Through my time at SMSU, I have collaborated with others in my courses to solve problems with the knowledge we have gained. As I continue on from SMSU, I feel that it is my responsibility to improve society and I am committed to doing it.
I have had a great experience at SMSU and I am not ready to leave yet! I have learned things not only from classes but from faculty, staff and working on campus that I can apply anywhere I go in my career, volunteer work and also in my relationships.
Through my LEP classes I've learned to be an active community member
My education helped me gain more skills to collaborate with society, but my willingness to do so comes more from my personality.
As a future teacher, my entire profession is dedicated towards sharing my education to help benefit children.
When talking to someone i listen to their perspective, and we both come to an agreement or compromise. I do not want them to feel like they need to change their beliefs or opinions on a count of my beliefs and opinions. Their beliefs made them who they are.
Through my time in the education department, we talk about many ways to get through to young students, especially those of diverse backgrounds.
My freshman year of college, I knew that I wanted to either go into business or education, but after spring semester of my freshman year I knew that the DELETED major was the best choice because I was interested in what I was learning about. I also could apply all these skills to my daily life. I also took a class this past summer and we had to pick a social problem to focus on. I chose education and we had to really think critical about the topic. I think all my classes that I have taken, I have been able to take something away from each class and apply to my life now or in my future.
I agree. The knowledge that I have been taught here at SMSU should be paid forward to those who may struggle in a particular area.
None of my education classes really talked about working towards being more involved in society. Nor did we discuss the problems in our community or current events in the news. We focused on how to be a good teacher.

Participant Responses
The classes have made me more aware at the diversity of the business world and ways to maneuver through different cultures.
I have been privileged to receive a higher education and I feel that I should use the knowledge I have gained to help others.
As a teacher, I will have the responsibility to ensure the safety, education, and health of every student within my class as well as those around me. Through my education that I've gained, I've learned useful tools to help me be successful in this regard.
As an educator, I anticipate working in the DELETED field to build up our young students to be our future!!!
I strongly agree with this statement because in the field of education I will work with students, families, co-workers and the community to create a positive learning space. I will have to be willing to collaborate with many people in order to make this happen. Once we all collaborate we will then improve society and improve the next generation of people.
I agree with this statement because SMSU has showed me that through student collaboration, anything is possible. SMSU has very bright students and when they put their heads together, they can really make a difference. Also, the difference they make has the potential to be the change that everyone needs.
When working with children I will need to stay up to date on the current issues in education along with working with a variety of cultures to make sure all children have an equal learning vantage point once they start school
As a future educator, I feel like I have been prepared through my classes at SMSU to be able to work with other educators to improve the overall learning through collaboration.
I agree with this statement because SMSU has helped me to prepare for public speaking which could help me with collaborating with other people to help improve society.
I feel through my education at SMSU I have been able to see problems within the society, this has given me the knowledge of trying to find ways to fix problems in need. This will help me in my future as I try to get other people involved with improving society.
SMSU is awesome if you are an athlete
It is important to voice your opinions to the community. Some people might have the same opinions but don't want to say them either. So it's important to voice it.
With sharing my knowledge and skills that I have gained through my education, maybe someone who isn't as informed about said topic will want to push themselves to learn more about society, as well.
Improving a society can help the world in many ways.
I don't think i need to make a commitment. If i can help i would but it's not likely
As a DELETED major I have a responsibility to the younger generation to teach and encourage physical health and well being.
Throughout my schooling I have been involved with DELETED and great hard working people who have shown me that our profession we all are interested in affects the community directly. We have worked with farmers and co-ops that have shown us how what we say and do will change the way other people will say and do things.
I think I have always had the skills to improve society. It is just a whether you want to or not. Anyone can help improve society, it does not take a college education to do so.
As a future DELETED , I truly believe that a huge part of my career is to help students be successful in school. The way I can help the most is by being an advocate for them, whether it's within an IEP meeting, the school district, or at the state and national level. Education is crucial to children of today in preparing them for life outside of high school and being educated members of society.

Participant Responses
I have learned a lot of things while being at SMSU, and those experiences should be able to help me work with others and find a way to make something better in society.
In the field of DELETED it is vital to be an advocate for the growth and learning of young children. Teachers of young children need to collaborate to meet the needs of all students and reach out to communities to provide all students with quality education and resources for families.
What I have learned throughout the past 3 semesters at SMSU has helped me prepare to collaborate with others to improve society. My in-classroom experiences have been monumental to my career and the extent of knowledge I gained is invaluable.
I agree with this statement because I feel that I will take what I learned from college with me. The skills I learned are something that I can use to help improve the world around me by making sure that I share my talents with others and continue to collaborate with people of all ages, diversities, and etc. to make the world a better place. I feel that I gained valuable skills through my education and I want to share those with others in order to help improve our society.
The education specific courses have taught me skills of how to handle conflict and what it looks like to positively collaborate with others. The DELETED does a great job of preparing student to be DELETED that will respect and encourage their students.
I don't think it is everyone's responsibility to improve the society.
It is important to use what one knows to improve society, as one cannot know everything. Therefore, each person with his or her unique background has a duty to improve society in his or her area. It is also important to be somewhat involved in other areas to keep people in control and moral.
It's a give and take world.
While the courses relevant to my major and minor were extremely helpful to me career-wise, I personally found classes that encouraged critical thinking and problem solving to be the most valuable to me. I can use these skills to inform others of their rights, and I have regularly used them to help people see stories from another person's point of view.
I have gained new knowledge on how to start a conversation, so now I can go up to different individuals with this information that I have learned and use it to learn the other individual's issues and help them find new solutions to their issues hopefully.
The purpose of paying for an education is to study that which we are interested and use that knowledge to serve a purpose.
I agree in the sense that I would like to work in physical rehab. This means helping those in the community to live their life better by helping patients in pain and give suggestions on improving health or seeing further providers based upon the knowledge I have gained in class. This job will include working with those with higher education and other fellow coworkers to provide the best service for these people.
I choose to enter into an DELETED career. It is my duty to educate not only my students but my community about ways to become better as a whole society.
I was given many opportunities to work with others and learn how to collaborate well with people who are drastically different than I am. I was put into new situations and was taught on how to handle them.
I agree with this statement because being at SMSU offers a lot of opportunities to be involved in a variety of student based clubs and organizations. For those that took a large part in being involved, then yes, every student should have gained tremendous amount of knowledge and skills from their experiences. For those that were not as involved, then I would mostly disagree with this statement because, they don't apply what they learn in class from a knowledge and skills perspective. It is one thing to learn about it, but it's a whole another thing to actually apply the skills and knowledge.
As a DELETED , I will be doing this regularly to help students and their families.

Participant Responses
We are here to help ourselves and help others. so this skill i learned will help others in many ways
As a DELETED , I realize that I will be working closely with people from different backgrounds, cultures, and perspectives that may be different from my own. I view this as a positive thing, because I will keep learning, and it will help me become a better teacher and member of my community.
I was given the privilege to expand my knowledge and skills in order to serve those in my community, specifically families and children since I will be working in the field of DELETED . Since I was given this privilege, I do have feel as though I have a responsibility and commitment to serve others being that not everyone is given the opportunity to have this experience.
I will collaborate with others in my professional field.
I have been given the skills necessary to improve community relations within my profession which is one of the most important issues facing America right now.
I can only think of three professors that talked about society and how we can make an impact Professor DELETED , DELETED , and DELETED . We would actually talk about ways to improve ourselves and others around us. In Professor DELETED class, we were required to buy the New York Times and read what has been going on in the world. It gave me a new appreciation for the news and the new papers. In Professor DELETED class, she brought in guest speakers, and how their work impacts the community, and how we would be able to help them, or keep their jobs going. Finally, in Professor DELETED class, we had groups of 3-4 people, and we would discuss our "why" statement and how it affects us. We would discuss how we felt, what we thought, and how it changed the way we looked as things.
I cannot say that the skills I learned in school will help improve society.
As a distance learning student, I don't have the interaction necessary to answer most of these questions with a AGREE or above. I do however feel that I have learned enough through my classes and group efforts to understand how important collaboration in general is.
With the knowledge and skills that I have gained through my education at SMSU, I hope to improve society by compromising with other people on issues. Not everyone is on the same page and I hope to help people see that there is always compromise on any given situation no matter how hopeless it might seem.
I plan to help others gain an open mind through communication.
I agree with this statements because with the skills I have, I now know I can improve society through my profession with the skills I have.
SMSU really didn't help me with learning anything.
It is everyone's job to improve the society around them regardless if they have attended college or not.
Years of experience in college have taught me how to ha far many different situations
I have entered the teaching field and believe that the education of young men and women is a collaborative effort with teachers, administration, parents, and the community. The knowledge and skills that I learned through my education will help me become an effective DELETED and role model to create good and responsible people to become positive contributors to society.
I believe as a DELETED it is my responsibility to make the better place through design. People are heavily influenced by the printed and digital design materials around them and it is my job to use this power for good not evil. Hitler used DELETED to help push his agenda which is an example of an extreme bad that could come about from skilled designers if they choose to negatively influence the world. I choose to positively influence it with my skills as a DELETED .
I feel that I am obligated to use the knowledge I have gained to effectively teach children and improve their lives. If I can, I will.

Participant Responses
In my belief, we all do have the responsibility to use our knowledge and skills we have gained through our education to improve society. Our responsibility is to share our knowledge that we gained to the people or try to come up with new ideas to help our society grow.
With my education I plan to help others improve their life
If i have the knowledge to help someone live a healthier lifestyle I feel that i should.
Everything we do has an impact. DELETED is not just the telling of stories, it is the spreading of ideas. Its structure, as a whole, relies on collaboration. You cannot put on a show and expect someone to come out unchanged. Granted, some shows are more direct than others in that their messages are more cohesive, but the principle is constant. All art gives its receiver the chance to reflect. DELETED is a great outlet for youths to express themselves. I believe my field has the power to expose individuals to how they truly think and feel.
I strongly agree with the statement provided because I went to college for a reason, which was to become knowledgeable about how young children learn and develop as they grow. I want to be able to use this knowledge and apply it to working with young children and families to help then raise healthy and happy children. Education is very important to me and I want to share what I know with others in order to help them.
I am able to collaborate with others well. I enjoy listening to other people's ideas, even if they're different from mine. I also feel comfortable to share my ideas. If I'm able to collaborate in a calm and respective manner, we could accomplish a lot that could help our society.
Helping others with the knowledge I have gained is just the morally right thing to do.
My education did not teach me to help improve society.
I have had a strong desire for public service long before coming to SMSU. While I agree with the above statements regarding myself I see SMSU in no way playing a component in such things. I spent a great deal of my time in SMSU in shock at the bubble that most of the students live in and the lack of challenge brought forth against the beliefs of their students. SMSU drastically lacks a sense of challenge and debate that college campuses ought to have. Outside of one or two professors, SMSU the institution has done nothing in terms of my career goals or much of my preparedness for future work.
I believe education is a huge factor in improving society. The more we abolish ignorance the more people can work together and grow as communities.
Graduating with a degree in DELETED , I believe I not only have the momentum to be a lifelong learner and continue engaging in discourse, problem solving, and research, but also to pass knowledge down to help shape our future minds. Because of the skills I have attained, I feel confident that every opinion matters, regardless if it is the same as my own, and teaching not only the persuasion, but listening of differences of such opinions help shape our society to a more peaceful, harmonious place in which consensus and discussion can prevail.
I don't necessarily believe it is a demanded responsibility to try and change society, rather I believe people should try and benefit others with the skills that they have, which in turn would likely help them, thus making the whole community a better place, at least in this one off example. I don't think it is rational or wise to try and label it as a responsibility, though it is understandable to see it from that perspective.
I have learned to work with others, even if we have differing views.
I would like to implement my knowledge and skills to improve society.
I have gained many new friends at SMSU, people who I will be friends with for a lifetime. These are also people I never would have expected to become friends with. They are very different from me, but SMSU brought us together and I was forced out of my comfort zone to meet new people. I have

Participant Responses
gained confidence and will collaborate with anyone, since my DELETED classes provided many group projects. I was forced to meet new people, which is wonderful. My life would not be the same if I hadn't gone to SMSU.
I have gained many new friends at SMSU, people who I will be friends with for a lifetime. These are also people I never would have expected to become friends with. They are very different from me, but SMSU brought us together and I was forced out of my comfort zone to meet new people. I have gained confidence and will collaborate with anyone, since my education classes provided many group projects. I was forced to meet new people, which is wonderful. My life would not be the same if I hadn't gone to SMSU.
It is not my responsibility to improve society. I am only responsible to improve myself first before establishing an improvement on others. Goes to everyone. Without a strong motive and goal, no one can really improve society.
I can affect the community through writing
I am an DELETED major, therefore I have the responsibility and the commitment to use the knowledge and skills I have gained throughout DELETED to collaborate with others in the DELETED work force to help improve society. I plan to make a positive impact on students' lives every day in the classroom, communicate effectively and positively with other staff members and parents, and to become a good role model for all.
I agree that it is my responsibility to share my skills and education to help others. Not only should I use my education to help others in academic areas, but to help provide them with the necessary services in order to be successful in society as well. I also believe my education has helped me to validate ideas that others have as well as share my own ideas.
Being one of the first dual-enrolled student at DELETED and SMSU was a fun experience. We had a small cohort class and we learned everything and taught everything together. Essentially we were a school family that we would fall back on if we ever needed help. As for the education aspect, it was a great opportunity to enroll in the program and the criteria provided from the SMSU and DELETED professors with different teaching techniques and expectations. It was also a learning curve for us considering we were the first ones through the program.
Individuals who have a strong conviction of their beliefs towards society in our day and age won't change their thought processes to better society. Those who support our current President in my opinion have been emboldened by his narcissistic behavior and i personally feel like its set back our society at least two decades. People will always have differing opinions, which is fine because that is what makes our country great. Yet i also feel like the educated have a responsibility to set the standard of what our society can be but ultimately we will fall short of that due to the conflicts of interest in the "improvement" of our society.
I believe that I have the responsibility and the commitment to use the knowledge and skills I have gained through my education because I now have a more skillful realization about others in the community. I also had to take into consideration that others may not have the same views as I do, so SMSU prepared me to learn and discuss the differences in a civil manner and to do so in a professional way.
The knowledge and skills I have gained through my education at SMSU have prepared me to start a career in my field of study. I have always wanted to serve others and now I have the chance to use my knowledge to.
This survey does not apply to me. I am DELETED -years-old and I am an DELETED student. I am married and do not reside or work in the Marshall area. I have had to come to campus once or twice a semester for my DELETED classes. My gen eds were taken care of in my previous degree. I have a DELETED Degree from DELETED . This survey is totally not applicable!

Participant Responses
With my career path, I believe this is a given. I feel like this has a lot to do with maturing, not just my education.
My experiences here have helped me to realize how diverse our population and how those diversities can help strengthen our knowledge of culture and learn other perspectives from people who may be different from you.
I agree because I think everyone should strive to improve society because that is our duty. I think everyone should want to better society in in any way possible. Our society can always be improved and it is up to us as individuals to achieve that.
I think it is important to improve society with the skills you gain through higher education.
I would like to spend more time volunteering and bringing everyone together within a community
I agree with this statement because I have always had a strong sense of responsibility and so I know that using my skills to improve society is the right thing to do.
Going into the DELETED field, it is important to be constantly collaborating with others to help improve upon the students' education and their ability to contribute to society. Through my education at SMSU, I have developed the skills needed recognize this responsibility and develop my commitment to helping to improve the education for students to come.
There are many things that I have learned here at SMSU. One of the biggest is how to work well with others. I would say that the number one common theme that my education had was many projects that involved a group, and how to have a successful group.
What I have learned in DELETED classes I can use that to better the community I work it and make it safer.
I would rather improve it than ruin it. The world has its good and bad, but helping to increase the good feels way better than decreasing it.
I find that it's important to take what you've learned and share it with others around you. As it may show others another way of thinking or give them a new perspective in the way you look at situations or life in general. That they may have not seen or thought of.
I agree that I have the knowledge and skills to collaborate with others to improve society. I currently work at a school in DELETED and every day we strive to improve our society.
I want to help improve society with the use of my education. This is not a one person job, and will need help from many other people
I believe that people have a responsibility to use their talents and hard work in order to help the communities in which they live in. Not using these skills in a way to serve people for the greater good is a disservice in my opinion. We have an obligation to use the knowledge we worked so hard to obtain here for the enhancement of the people we serve with it. I think that I have gained a lot of knowledge and experience at SMSU. I want to use it for helping the communities I live in throughout my life. In order to do this, I will need to collaborate and work well with others. If we all did this, society would be even better.
As a DELETED student, my education has taught me how to collaborate correctly and efficiently with others for the public's benefit.
I have learned a great deal about what constitutes as a social problem and some of the ways in which I can help solve such problems and educate others about them to begin working on fixing them on a small scale, which can then in turn assist in improving upon them on a much larger scale. Also, by having to engage in hands-on experiences with helping among the community, I feel as though I am much more confident in my knowledge base an my ability and responsibility to use the knowledge and skills that I have gained through my education to help others among the community. The incorporation of DELETED is a great asset to the students of SMSU and is something that should be articulated more to incoming students! Also, having to complete undergraduate research and an

Participant Responses
internship before graduation is something that should be well-articulated to incoming students as this is another phenomenal experience that sets SMSU students apart from students from other universities who are seeking employment after graduation.
Knowledge is power, and it needs to be used for good.
I am better equipped with skills and confidence that will assist me with speaking to others and using what I have learned.
My undergraduate education has given me the resources I need to work efficiently with others to achieve a common goal.
I believe that everyone has a role in our society. The knowledge I learned at SMSU has geared me to help society whether I knew it or not. I now see that the Marshall community and SMSU community has really given me as much help as they could. I think it is now my turn to give back to society with the knowledge that I have learned. I wish to do good in my life and I think this is a great place to start.
The knowledge and skills I have learned the past four years have helped me develop social and personal skills that I will be able to use in my profession as well as in normal communication every day. I have become more confident and strong over my four years at SMSU.
My education and my degree are very important to me. I am very passionate about DELETED and I am very dedicated to help others thrive.
I agree that the skills that I have gained can help to improve society and better the community as a whole. The community is a very important part of the experience and we need to strive to keep communities safe for other people.
I feel confident in saying that SMSU has prepared me for the workforce and that I am prepared to take my knowledge and apply it to real-life scenarios.
Being a DELETED major and DELETED minor I have developed tools and skills to understand people and life and I hope to impact youth positively through therapy.
As a DELETED it is my responsibility to advocate for my students and to teach them the skills needed for self-advocacy. Doing this and collaborating with teachers and parents will help provide opportunity for my students and create understanding.
I have still more to learn past a four year college degree. In the real world is where I see developing more skills and have the desire to keep working to help those in society. It is a matter of applying those skills developed from college into the real world that counts.
I feel it is my responsibility to help others. Others may not have had the chance to get a good education and I will not squander mine.
I plan to attend community meetings and vote in all elections that I find to be important.
I agree with this statement because I feel as if I have a responsibility to my peers and my professors to bring something to society in a positive way and continue to strive for ways to improve myself and others around me.
I feel that the information I have gained from SMSU has well prepared me to have a voice and stand up for what I believe in.
I strongly believe that the study of DELETED can help enrich the lives of people of all ages, genders, and nationalities. Because of my time here at SMSU I believe that it is important for me to help others understand historical events and ideas and to encourage others to study DELETED as a way to better understand ourselves and the world around us.
From my personal experiences at SMSU I am able to recognize my dream career path(s). Through SMSU, I found out that I desire to uphold a leadership position and give back to the community through volunteer work not only volunteer work though. I plan to work for a company whose mission is to help people and impact their lives.

Participant Responses
I believe with the knowledge and skills I have gained through my education at SMSU, I will be able confidently DELETED , which will be my commitment to improve society.
I work in DELETED and will use the assessment and skills I have achieved during my education to bring awareness to the needs and wants of different groups of people in the community.
My degree did not talk much about community involvement. Hopefully someday, I will be able to be more involved in the community I live in.
I agree with the above statement because it's very important to be able to collaborate with others to improve society it's the only way anything will get done.
Once I graduate I feel like I am obligated to improve society and make our community a better place to live.
My education at SMSU has equipped me with the skills and the desire to improve society. This may be on a small scale or a large one. I have attained the skills to collaborate with community members around me and to communicate my ideas.
My job is to serve our country again in the DELETED . SMSU did not make me feel this obligation.
In school we learn a lot of skills and the knowledge that is needed for us to be able to have the tools that are needed to come together and improve our society.
Within means yes, it has to improve myself and the community or the other people I'm serving.
With a degree in DELETED , I feel that I have a responsibility to help improve society one person at a time. I also have the skills to be able to work with others to help give the knowledge and skills to help improve society's health concerns.
I think that being educated means that I have responsibility to use the knowledge to help others and to always follow the correct path. I think that the people and clubs I'm involved with have taught me to work with others to achieve greater common goals.
I think that being educated means that I have responsibility to use the knowledge to help others and to always follow the correct path. I think that the people and clubs I'm involved with have taught me to work with others to achieve greater common goals.
We all have the ability to make an impact on society. What we learn at SMSU helps us make the right choices to do so. Each day we are working with our classmates or members of the community to collaborate. By doing so, we are improving our society by working together.
I tried to type in here but the survey kept timing out on me.
The ways which I agree with the statement is because with managing I can help better manage companies or organizations with different diversities. I can also use my skills to communicate with many different types of people. I can stay professional in most situations and confident with my knowledge. I feel that I can make a difference in my leadership skills.
I have the privilege to be educated on so many different levels. I need to use that education to help Improve our society because that is really what it is all about. When you learn, you do not just keep all the knowledge to yourself, you share it with the world. This benefits society because we can work together to make the world a better place through education and understanding. I plan to do my best to do just that.
With the knowledge I have gained I will help enrich the lives of my patients through my work.
I agree that i have gained some skills from my time here at SMSU that will help me in many different aspects of my life. I am happy with my decision of what I decided to go into and I feel comfortable going out into the real world with this education.
I agree that i have gained some skills from my time here at SMSU that will help me in many different aspects of my life. I am happy with my decision of what I decided to go into and I feel comfortable going out into the real world with this education.

Participant Responses
I agree with the above statement and will use the skills from my degree to ensure its completion.
As a DELETED in the community, I feel as though my education here has built my confidence to serve our community to the best of my ability. I have learned how to effectively communicate, collaborate, and critically think as a nurse which will be useful to my practice. I plan to use my education to provide the best patient care I can and give selflessly back to the community that gave me so much.
I agree with this statement because not everyone is able to attain/further their education whether that is because of money issues or family environment, etc. I feel that because I was given the opportunity to further my education that I have a responsibility to use the knowledge I was given to improve society so that maybe one day everyone will be given equal opportunity to gain the knowledge and skills that higher education such as SMSU provides.
With the education received I will use the skills to collaborate and talk with individuals about society. I will use problem solving and communication to accomplish this.
SMSU has taught me loads of knowledge to use in all of my future choices.
I agree with this statement because as an DELETED major I aim to inspire, help, and collaborate with students to help them learn and grow.
I have been able to use my knowledge in real life experiences.
Serving others is my passion. My major and faith in God keep me going to be able to make a difference, one person at a time.
Through my 4 years of school, I understand that I have the responsibility to help improve society. I also am committed to helping improve society as well.
I feel like I have had this drive within myself to be a competent, active member of society rather than having SMSU help me develop these traits.
I have taken many courses that have stimulated my interest in other cultures, other professions, other races and history.
I hope with my knowledge of music and theater, I hope to build on my craft, and continue the tradition of keeping the arts alive wherever I head off too. I'll continue to prove how these tool are important to society and they need to build.
I like to help others in need and have helped others that have been in need. I have grown in who i am today and who i want to be in the future.
During my time I never really had classes that talked about improving society. However, after being at SMSU I do have some knowledge about what it would take to improve society.
As a DELETED in this digital world, i have connections and skills that give me an opportunity to make a difference. I have the ability to bring light to issues and make clear on things that some won't know or understand.
Being an DELETED major, I plan on DELETED . To which I believe can help society in a small way by creating an escape for readers but also reminding them that they're not alone in what they go through.
My degree in DELETED has prepared me to understand the social issues that are pressing and need to be addressed. I have learned how to advocate for change, how to help other advocate for themselves, and to work with others to problem solve.
With my education. I have gain skills and knowledge on different aspects of life that can improve the community
One thing that we got to do in the DELETED program was to volunteer at the free tax clinic at Western Community Action. Here we actually got to apply the things that we learned in the classroom and got to help the community by preparing their taxes at no cost to them.

Participant Responses
I want to work in an environment with teens and young adults who have faced issues in their past and want help to work past those issues and the hold it may have on them. So I agree that my education has made me want to improve society, in many different ways, but that is just one.
I HAVE BEEN A FUNCTIONAL MEMBER OF MARSHALL FOR 10 YEARS AND WAS ALREADY INVOLVED IN MY COMMUNITY. SMSU HAD NO EFFECT ON THAT.
I agree with this statement because of the way I was educated by my online professors. I may not have been a part of the Marshall community (online student), but many of my professors express the importance of being involved. I believe that my degree and textbooks also helped guide me to this belief about society.
I agree because I have gained those skills. I want to be a therapist and I can do better in my choice of job by using the knowledge I gained from my education.
Well I want to be a DELETED at some point in my life, and that is a way I can help others. DELETED , the adviser for DELETED , has helped me understand ways in which I can come up with my own ways to improve society
I have gained more knowledge and insight on issues that are important to me and my history and also to the issues that are important to me. I am a hard worker and will continue to be and have gained knowledge and ability to work with others in my college experience.
As a vegan and animal rights activists, I have the responsibility to educate people that using animals as a commodity is pure evil. When slavery was legal, many people believed it was not right but were too scared to speak out. When Hitler killed millions of people in concentration camps, many people believed it was not right but were silent and afraid. I am an unafraid vegan, and I openly say: it is not right to do what the majority of humankind is doing now. I decline to respect evil.
Continuing my education past high school allowed for me to experience and learn that there is more out there than just my small community. Making myself aware of what is happening around me has made myself think about what can be improved.
I always say knowledge is power and you can never know too much. Also I believe communication is the key to success, if you're a good speaker you can get into any school, get any job and have any girl you want. Backing up what you say with knowledgeable facts always helps.
Helping to volunteer and help other in need.
Working as a team through group work and projects, allows students to collaborate on a bigger picture than just individual work.
We are all part of society and I believe it is each of our individual responsibilities to better society.
Improving society as I get older and have a say is necessary.
I'm just not sure how I'm exactly supposed to help with a DELETED major. I could see how other majors could make more of a difference.
SMSU has helped shaped me into the person I am today over the past four years. I have increased my knowledge through the course I have taken and challenged myself with the clubs of DELETED and collegiate DELETED . I have met great friends throughout my time here. My education at SMSU will help direct me into a career that I hope will make an impact to improve society.
I strongly agree with this statement because of a better society means better opportunities go gain knowledge and skills.
I feel like I can communicate well and listen to other people's problems so that I can try my best to help them with their problems.
I agree with this statement as i always intend to help my community
We must study the past so we can learn from it and hopefully not make the same mistakes. Once we understand how we arrived at this point in time we can begin to understand how to approach current issues from a wider point of view. It can also help us to have a better understanding of people who

Participant Responses
are different from us. When we understand their past we can better see things from their perspective and see where we are alike.
I agree with the above statement because I have the conviction to help others and to serve others in whatever way possible. I believe with that conviction, as well as my education at SMSU, I can serve others in order to improve our society. In my time at SMSU, I worked with many people of various backgrounds to better SMSU as a whole. I believe that was just the start of what will be achieved after we graduate. I truly believe nothing great can happen unless one works with those around them. I have learned so much about collaboration and the value of service to others throughout my time, and I truly am excited to see how those skills can be applied upon graduation.
I agree with the above statement because of the major that I will be graduating with. As an DELETED graduate, the main focus of the entire major is to work to a common goal of helping individuals within the community.
I graduate with DELETED degree and I have learn how to look into community issue with broader social perspective. However, there are some other side of issue that must be related to economic or political, thus, it is important for me to collaborate with people who have experience in different filed.
Being in the DELETED field I have already pretty much dedicated my life to making someone's day. It's what I love to do and the education that SMSU has provided me with will help me make an impact on society through one person at a time.
Each person in society has a role to play that can either be positive or negative, I choose to be a positive influence.
No matter what job I have after graduation I will always strive to make my workplace and my community better.
I agree with this statement because SMSU has taught me valuable lessons that I can use to improve society with others.
I agree that I have gained the responsibility and the commitment to collaborate with others to improve society. Through the assignments of group projects and group discussions, I have learned to understand what it is like to work with those who agree with you and to work with those who do not agree with you.
As a future teacher, I plan to use the knowledge I gained to work with students and other teachers to help improve students' learning.
I feel that I more so agree to this because I have learned lot of responsibility and what it means to use skills throughout my education experience and how important collaborating with your peers in the environment you work in is. It helps make the environment more healthy and improves the communication between employers in your workplace.
I just feel like it's my duty to give back. I wouldn't be where I am if it weren't for others, and I have the duty to do the same. And I enjoy helping.
I'm an DELETED major, I'm just not sure how that could be used to improve society, although I'm sure there's a way.
I agree with the statement, for the most part, but I actually arrived here already feeling that way, so the fact that I attended SMSU didn't have a huge impact.
I have the knowledge and skills - gained through my education - to help others improve in society by informing them the benefits and goals that exercise can do for one's overall well-being.
I think it is important for everyone to feel the responsibility of bettering the community and world around them. There are so many issues that have to be fixed right now, and it's going to take all of us coming together to really make that difference we need.
I believe that we must be the change we wish to see in the world, so it is my personal responsibility to use all my knowledge and power to improve this world and it all starts with our inner knowingness.

Participant Responses
We all have the power to make changes, it is just a matter of how bad we truly want to improve the world.
I may forget but most of the knowledge I learned from my experience will be remembered.
I believe with my education from SMSU I will be able to confidently give my input with the community's best interest in mind.
I would agree that i have a responsibility to use what i've learned at school to better my community and society. Not everyone can afford or have the opportunity to attend a university. As such they may not have the connections, resources, and/or education to help other citizens or even themselves. As someone who was privileged enough to receive a higher education, it is my responsibility to make a positive contribution to the community i live in, and it is my civic duty to be an active participant in this country's affairs.
I want to use my degree to help people in crisis situations and those suffering from long term effects of trauma.
For me, getting involved in clubs and organizations at SMSU helped me to collaborate with society and want to make it better. The courses I was involved in with SMSU did not talk about improving society or making the community better.
I think it is always our duty as a society to continue to grow and improve our society.
My SMSU experience was very good.
The professors made it really enjoyable to learn.
I believe if i have the knowledge and skills to help our society, i should definitely use those skills for the greater good. This is what a career in DELETED is all about. We have to collaborate with others to help people in the community.
I agree with this because I have gained so much knowledge here at SMSU to help improve society.
I can use the knowledge at which I gained at SMSU to improve my own community.
My education helped me understand the field I am entering as well as how to utilize teamwork.
I don't think improving society is a responsibility, but rather a choice that individuals make. That being said, I do plan on using my knowledge and skills to try to improve society.
I agree that I can make a difference in society. But I do not plan on being a social activist. I can work to improve society.
I strongly agree with this statement because I believe that through the courses that I have taken at SMSU I have gained knowledge and skills to collaborate with colleagues and other people to work towards one goal. With a career in education, I will be collaborating with other teachers to improve our society as we educate young children.
I feel with my specific degree I have learned more about people and have become a more understanding person.
I wouldn't say that I'm required to or that it's my "responsibility and commitment" to improve society. However, I do believe I have gained skills to help improve society.
Since my first day at SMSU this school has shown me how important community is and how I can contribute to improving society. I feel that it is my responsibility to represent SMSU in this way.
Could have been better
I agree with the fact that my SMSU education and experience has helped me a lot.
I don't feel like I learned about changing society too much in my college career. Professors are too worried about teaching background information.
I have been given the tools and knowledge to use at my disposal what i have learned in college to help improve society.

Participant Responses
I feel someone needs to know both sides of the story before picking a side and figuring out a happy medium. Before all of that someone needs to understand someone for who they are before making assumptions and stuff.
I have learned that it is ok to agree to disagree sometimes. I learned that all opinions are important even if they don't necessarily match your own.
Through my major I have learned that food can be a huge way to help society. I can create new foods for everyone to be able to eat. Also through my LEP 400 I have learned to not take the back seat. I learned to stand up for what I want to fight for. Don't let someone else do it.
I will be graduating with a Bachelor of Arts in DELETED with multiple emphasis. In my future career, I plan on DELETED as a way to help improve my own life as well as the condition of society. My goal is to help keep DELETED alive and continue to push the arts forward into the future. My goal as an DELETED is to keep DELETED alive for future generations to enjoy and continue to experience.
I fail to relate to most of the issues and causes I see on posters throughout the SMSU campus.
My DELETED major has really unlocked my passion for helping those with mental health needs and the significance of how a healthy mind can promote a happy healthy individual
I am completing the DELETED program, which was primarily online so many of these questions did not apply to taking primarily online classes without being on campus very many times. I have a family and a full time job besides taking 8 credits this semester. I plan on using the knowledge that I've gained to continue to work the DELETED and volunteer in our local school system as able to.
I agree with this statement because the classes I have taken in the DELETED program has given me enough knowledge and hands on experience to help improve others. It has given me more confidence going into society and being able to work well with others.
My college education has thoroughly prepared me to collaborate with others in order to improve society.
Using ones education to shape society is essentially important as we are the up and coming for dictating how society functions.
The state helped me in order to pay for this degree, so i would like to see what i can do to improve society in my own way according to my passion and education
Not yes not no and not even
I believe that through hardships and discussions that I have had with those around me and the professors that I had the honor to learn from there is a great deal of knowledge and skills that I learned to continue to help improve society. The ability to have a discussion rather than an argument is one of the things that I learned.
Not everyone is capable of gaining higher education, so it is important for me and others like me to share our knowledge and experience from higher education with those who do not get the same opportunity. This helps everyone in being able to actively make an effort to improve society, because it takes the whole of society to change the society, not just a select few.
I agree with this statement because I truly believe that I can go out into the world and help to make it a better place because of the knowledge I have gained in my time at SMSU.
Collaborative conversations is what fuel the world and our advancements! Being able to practice classic rhetoric and being able to build from another's idea is what it is all about!!! Listen, reflect, don't take it personal, and build from there!
Being able to just communicate about a problem and being able to solve it with other people to make society better is what everyone probably wants to do.
I believe I have developed really good communication skills. This is the most important part of being able to work with others and better society. I have learned this through being a part of a DELETED team at SMSU, being a part of the DELETED , and working with other classmates on projects.

Participant Responses
Of course I want to improve society. Who wouldn't want to improve society?
Being an DELETED major, I feel that I can help society from a natural perspective and help improve the environment in which we live in. Also to help others make a difference in their own lives conserving our natural resources.
Two of the professors have guided me and pointed me in the right direction working in a diverse field.
I believe that as a teacher I will improve the lives of many every single day. SMSU has allowed me to achieve this and understand how to improve student lives.
I am going into DELETED so i will be dealing with many cultural backgrounds. I chose 5 because as one person in DELETED I have a duty to improve society but may not have the political pull to do everything that everyone wants me to do.
It's kind of my job
I was a fully functioning adult before and after my time at SMSU. Nothing done in that school changed how I think.
I plan to use the skills I have learned to apply in my life in both jobs and everyday life. I am doing this because I paid for this education and therefore if what I apply is not correct then I have someone other than myself to blame.
It is not just my education that has helped me better collaborate with others to improve society. I have also been working in a collaborative company for 15 years that has also prepared me for debate and helping society.
The DELETED program taught me skills needed in order to collaborate with other DELETED professionals and other programs in the community to help patient's in need.
I agree this statement in that I have the ability to work with others.
My skills as a leader that i developed in college make it so that I am supposed to be a leader.
I completely agree with this statement because I do have the responsibility and the commitment to use the knowledge I gained here at SMSU to collaborate with others to improve society and the field of DELETED . By doing these things and relying on my knowledge and ethics I've learned through my educational career I can offer new insights in hopes to create a better outcome.
All statements are good
I am capable of providing a safe, comforting, loving, caring and healthy learning environment for you students. I have gained the skills necessary to make this happen by earning my degree. I will work collaboratively with others and the community to better society with my ability to teach effectively.
I will earn a career in helping others. This will hopefully improve society.
Indifferent
Our community and society is more important to us than we think. If individuals try to improve the community and society one at a time, we will eventually make everything improve. Our knowledge and skills can help us improve our society one step at a time.
I agree that it is my responsibility to use the knowledge and skills I have learned at SMSU to collaborate with other to improve communities and populations as a DELETED . I have learned how to collaborate with agencies to bring quality equal healthcare to all.

Note: Responses such as “No” or “None” are not included. Minor typos and misspellings in responses have been corrected. References to individual persons, departments, and organizations have been replaced with “**DELETED**”.

Are there any other comments you would like to make?

Participant Responses
Since I mainly did online classes these questions don't apply to me so much.
I truly value all of the experiences I was given the opportunity to have during my time at SMSU. I know that I will greatly miss SMSU and the community.
I am a student through the partnership with NCC and this survey does not exactly apply to me.
As an off-campus student I did not agree that SMSU has been the only influence on these situations for me. I have more so been affected by the experiences in my jobs.
I do not recall any volunteering opportunities that were widely told. Emails would have been helpful.
DELETED doesn't do anything but DELETED . Also communicating with them is hard because of the language barrier in that English is not always their first language.
Go Stangs!
SMSU, as an institute, did not really contribute to my growth in political views or anything stated above. A lot of growth was in me as a person.
This survey only targets a group of students which I feel will make the results ineffective.
The DELETED program needs a lot of work. I would not recommend this program to anyone looking for DELETED licensure.
Professor's DELETED, DELETED, DELETED, DELETED, DELETED, DELETED, DELETED, and DELETED have made a large impact on my life. Though I have not had a class with many them since my freshman year, I know that they were always rooting for me. If I would ever need a reference, a laugh, someone to talk to, or guidance, I know they would all be willing to help. They are the reasons I stayed at SMSU, and why I was able to graduate. These people have gone above and beyond what is expected of them, and because of their guidance and support, I will graduate with a B.S. degree in 3.5 years. My success is devoted to those wonderful beings.
The DELETED program that is offered seems to just push students through in a vague effort to teach them very little on the subject. Professor DELETED has little to no knowledge on how to effectively teach or even help the students to be engaged citizens. Very disappointed in my decision to trust in SMSU to provide an education on the subject. Something should change to better provide the students with a well-rounded and engaging curriculum.
SMSU does not promote diversity of ideas in the DELETED department refusing to incorporate professors that are not liberals.
Being a distant learner, I didn't have the same experience, making it harder for me to answer these questions.
I am proud to have achieved a degree at SMSU and I have thoroughly enjoyed my professors as well as the DELETED program.
As a person who attended SMSU coming straight from the inner city of DELETED , I would just like to say I'm very fortunate to have had this opportunity. I feel that person living in DELETED for the time that I did equip me to properly understand people of different backgrounds and diversities regardless of their appearance. A lot of stereotypes that I had were squashed and I've made lifelong friends with people that I would have never expected to. I will always look back on my time at DELETED with fond memories of the great people as well as professors that I met on my journey.
Even though I attended my SMSU classes at DELETED through a cohort program, I was still able to take online classes with different professors and I am grateful for each class and for the knowledge I gained.
Why is this part of the graduation process?

Participant Responses
It is difficult for me to find time to invest a lot into community service since I've been working between 25-40 hours per week plus taking at least 16 credits or so per semester. I think it would be beneficial if the SMSU faculty and students were more vocal about community and campus-wide engagement and how to invest in that despite a busy schedule. I find it difficult to commit to regularly doing so with how crazy my schedule is, so being more exposed to such options would've been very beneficial to me and to build up that part of my resume.
There is a big world out there, besides inside the walls of SMSU. People after graduating still need to have that desire to learn and develop more skills to get you where you want to go. The things learned in numerous lecture will help, but it just comes down to the willingness to step outside the doors after college and into the job world.
I'm a non-traditional student. I had a pretty clear idea of the type of services and work that I wanted to do for the communities in which I live and work. Attending SMSU has helped me to solidify and strengthen my ideas and motivations and helped me learn more about what I can do.
I tried to type in here but the survey kept timing out on me.
SMSU really is where I belong. This place will always be home to me, even when I leave to pursue the rest of my life. This place is amazing and I am grateful to have been a part of this family for four years. I am definitely going to miss it.
Thank you for the last four years, SMSU. It truly has been a home away from home for me.
I have been an online student throughout my time at SMSU and have been uninvolved in any volunteer opportunities on campus or related to SMSU in any way.
YOU NEED TO FIND A BETTER SURVEY FOR THOSE WHO ARE NON TRADITIONAL STUDENTS.
Majority of the questions in this survey were only related to at a low level since I was an online student. From postings (social media, e-mails, etc.) and word of mouth, it sounds like SMSU has a high involvement level when it comes to the student body and community. My results would have been different if I would have been an on-campus student.
SMSU is a GREAT University.
I learned one thing: GPA sucks! My GPA is 3.98, and I worked really hard for it. Unfortunately, it gave me very little opportunities. I am still a subject to what I call an NPG Discrimination. NPG stands for Not in Protected Group. It is sort of discrimination in which a person is actually a victim of discrimination, but this kind of discrimination is not listed in a list of "protected groups" made by the government. I am discriminated by my immigration status (F-1). Nobody cares, however, that it is not my fault that I was born in the wrong country: it is simply not my choice. And my high GPA doesn't help me at all. Students who constantly asked me for help with DELETED and other assignments and definitely less skilled than I am, got jobs that I was rejected. During the 4 years at SMSU, I learned that equality and non-discrimination do not exist.
This survey needs to have a section for those who did all or most of their classes online and who may have never come to the campus.
I am very thankful for my education and overall experience at SMSU. It has changed my life for the better and I am so excited to see what the future has in store. :)
It's been a journey.
In my courses at SMSU, we focused on the coursework material and not about society or improving life. There were a few courses that we discussed it in but rarely three.
I think a lot of the questions were valid, but I put a lot of "3's" because although I might agree with the question, I wouldn't really consider it to be because of SMSU.
SMSU is a great learning institution. The DELETED faculty are great. Thank for the opportunity of learning at SMSU.

Participant Responses
SMSU has been a wonderful place to receive my undergraduate degree. I chose SMSU originally, not really concerned about where I was going for my education. I had friends that stayed around their hometown or home state, but I think out of all of those individuals, I had the best education and college experience. I've learned so much about myself, this community, and more about my major. I would not trade this experience for anything. And my favorite part is that it saved me so much money in comparison to most state schools. I am forever grateful for all the positive experiences, and the personal and professional growth I have undergone through my SMSU journey.
I wavered on a lot of the questions because I don't think I agree with all of those statements BECAUSE I came to SMSU. I think I already had a sense of helping others and improving society on my own.
I am not sure how the questions on this survey relate to my major. DELETED has for sure made me a better person, aware of social issues, and has given me a want to change things that are wrong in the world. But I do not know how any of these questions relate to my major. Yes, I'll work to be a good person, and my time at SMSU and in the DELETED program has changed me for the better.
I felt like a lot of these questions were irrelevant or repetitive. Not exactly sure what else I'm supposed to comment on. I didn't participate in many activities apart from class.
Overall had a wonderful experience at SMSU participating in DELETED while learning how to solve problems in groups and also gaining an understanding of how our own governments work for us.
The other survey we take is misleading to respondents. Which would lead to misleading results regarding education? When asking students about a "paying job", people will report their minimum wage job. Which is bad writing, bad stats, and leads people to make uneducated decisions
SMSU is way too liberal and has professors that aren't willing to listen or even discuss conservative views in a manner that is educational.
I think there are some social clubs that are very important that are often felt left out by the university atmosphere. Those that have the greatest needs to feel safe and secure can often feel like outliers in the community and can be hard for those in those communities for feel like they make a difference. I think the college reaching out to some of the smaller social clubs, see what they need, and could help the sense of community immensely.
SMSU has enabled me to improve myself, and the way I think. I am saying I less, and listening more!
Whoever thinks these exit interviews are "worth it" need to look themselves in the mirror. SMSU could probably hire a real professor instead of wasting time and manpower to write and read these exit surveys that no one takes seriously.
My community involvement has nothing to do with my experience in attending SMSU. It has to do with the years of experience of living. The fact that I had to fill out this survey before I could graduate, almost seems unconstitutional.
I am just filling out this survey to get my diploma.
I was very pleased with SMSU and the DELETED program.
I am thankful for the experience that SMSU gave me.
Some of these questions were hard to answer. As an older person returning to college, I feel I possessed a lot of these qualities prior to attending SMSU and didn't necessarily gain them through my education. I am sure it helped to polish them though.

Note: Responses such as “No” or “None” are not included. Minor typos and misspellings in responses have been corrected. References to individual persons, departments, and organizations have been replaced with “**DELETED**”.

Further Statistical Analysis

This section of the report presents the results of additional statistical analyses of the data collected in the Civic Engagement Survey. Statistical analyses included here are as follows:

- Reliability for CMG scale
- Correlations between CMG subscales and selected demographic variables
- Cross-tabulations and chi-square tests for various measures of civic engagement and selected demographic variables
- Analysis of variance for CMG subscales indexed by selected demographic variables

Reliability

Scale	Cronbach's Alpha
Entire CMG Scale	.971
Knowledge Subscale	.911
Skills Subscale	.892
Dispositions Subscale	.924
Behavioral Intentions Subscale	.749

Subscale Correlations

Subscale Correlations	Behavioral Intentions	Knowledge	Skills	Dispositions	Overall CMG
No. of Hours Currently Working in a Week*	.034	-.001	.029	.020	.014
Current Number of Hours Enrolled*	-.025	.173	.034	.048	.050
How Often Attend Religious Activities*	.095	.120	.101	.126	.121
Estimated No. of Courses with Community Involvement^	.141	.203	.177	.172	.186

*Spearman correlation computed for these variables ^Pearson correlation computed for this variable

Note: Highlighted values represent significant correlations at $p \leq .05$.

Cross-tabulations and Chi Squares

Gender Cross-tabs	Value	df	Asymp. Sig. (2-Sided)
X * Volunteering for One-Time Service Activities	2.158	4	.707
X * Volunteering for Campus Events	5.919	4	.205
X * Participation in Political Activities	2.279	4	.685
X * Community Involvement through Campus Organization or Club	5.592	4	.232
X * Participation in Community Service for Scholarship	.204	1	.652
X * Estimated No. of Courses with Community Involvement	2.949	3	.399

X = Gender

Note: Highlighted values represent significant correlations at $p \leq .05$. See table(s) below for details.

Number of Hours Currently Working in a Week Cross-tabs	Value	df	Asymp. Sig. (2-Sided)
X * Volunteering for One-Time Service Activities	18.809	12	.093
X * Volunteering for Campus Events	16.635	12	.164
X * Participation in Political Activities	11.231	12	.509
X * Community Involvement through Campus Organization or Club	54.974	12	.000
X * Participation in Community Service for Scholarship	2.485	3	.478
X * Estimated No. of Courses with Community Involvement	8.794	9	.457

X = Number of Hours Currently Working in a Week

Note: Highlighted values indicate significant chi-square at $p \leq .05$. See table(s) below for details.

		Community involvement through campus organization or club					Total
		None/Never	Once each school year	Once or twice each semester	About once a month	Nearly every week	
Number of Hours Working in a Week	0	38	14	19	15	19	105
	Less than 20	32	23	24	33	26	138
	21-40	70	11	19	16	22	138
	40+	42	4	9	3	1	59
Total		182	52	71	67	68	440

Current Number of Hours Enrolled Cross-tabs	Value	df	Asymp. Sig. (2-Sided)
X * Volunteering for One-Time Service Activities	17.788	8	.023
X * Volunteering for Campus Events	21.995	8	.005
X * Participation in Political Activities	43.006	8	.000
X * Community Involvement through Campus Organization or Club	49.924	8	.000
X * Participation in Community Service for Scholarship	0.449	2	.779
X * Estimated No. of Courses with Community Involvement	2.903	6	.821

X = Current Number of Hours Enrolled

Note: Highlighted values indicate significant chi-square at $p \leq .05$. See table(s) below for details.

		Volunteering for one-time service activities					Total
		None/Never	Once each school year	Once or twice each semester	About once a month	Nearly every week	
Current number of hours enrolled	None	1	0	1	1	0	3
	Less than 12	74	20	13	3	1	111
	12+	155	81	62	25	3	326
Total		230	101	76	29	4	440

		Volunteering for campus events					Total
		None/Never	Once each school year	Once or twice each semester	About once a month	Nearly every week	
Current number of hours enrolled	None	1	1	1	0	0	3
	Less than 12	90	12	9	0	0	111
	12+	188	76	53	7	2	326
Total		279	89	63	7	2	440

		Participation in political activities					Total
		None/Never	Once each school year	Once or twice each semester	About once a month	Nearly every week	
Current number of hours enrolled	None	1	1	0	1	0	3
	Less than 12	98	9	3	0	1	111
	12+	295	15	11	3	2	326
Total		394	25	14	4	3	440

		Community involvement through campus organization or club					Total
		None/Never	Once each school year	Once or twice each semester	About once a month	Nearly every week	
Current number of hours enrolled	None	0	1	1	0	1	3
	Less than 12	75	10	11	12	3	111
	12+	107	41	59	55	64	326
Total		182	52	71	67	68	440

Marital Status Cross-tabs	Value	df	Asymp. Sig. (2-Sided)
X * Volunteering for One-Time Service Activities	20.588	4	.000
X * Volunteering for Campus Events	23.599	4	.000
X * Participation in Political Activities	4.014	4	.404
X * Community Involvement through Campus Organization or Club	61.691	4	.000
X * Participation in Community Service for Scholarship	6.472	1	.011
X * Estimated Number of Courses with Community Involvement	2.858	3	.414

X = Marital Status

Note: Highlighted values indicate significant chi-square at $p \leq .05$. See table(s) below for details.

		Volunteering for one-time service activities					Total
		None/Never	Once each school year	Once or twice each semester	About once a month	Nearly every week	
Married or Not	Married	56	11	5	2	0	74
	Not Married	173	90	71	27	4	365
Total		229	101	76	29	4	439

		Volunteering for campus events					Total
		None/Never	Once each school year	Once or twice each semester	About once a month	Nearly every week	
Married or Not	Married	64	6	3	0	1	74
	Not Married	214	83	60	7	1	365
Total		278	89	63	7	2	439

		Community involvement through campus organization or club					Total
		None/Never	Once each school year	Once or twice each semester	About once a month	Nearly every week	
Married or Not	Married	60	5	1	1	7	74
	Not Married	121	47	70	66	61	365
Total		181	52	71	67	68	439

		Participation in community service for scholarship		
		No	Yes	Total
Married or Not	Married	73	1	74
	Not Married	326	39	365
Total		399	40	439

How Often Attend Religious Activities Cross-tabs	Value	df	Asymp. Sig. (2-Sided)
X * Volunteering for One-Time Service Activities	6.042	12	.914
X * Volunteering for Campus Events	12.795	12	.384
X * Participation in Political Activities	16.619	12	.164
X * Community Involvement through Campus Organization or Club	25.803	12	.011
X* Participation in Community Services for Scholarship	3.824	3	.281
X * Estimated Number of Courses with Community Involvement	5.609	9	.778

X = How Often Attend Religious Activities

Note: Highlighted values indicate significant chi-square at $p \leq .05$. See table(s) below for details.

		Community involvement through campus organization or club					Total
		None/Ne- ver	Once each school year	Once or twice each semester	About once a month	Nearly every week	
How often attend religious activities	Do not attend	57	8	22	17	12	116
	Once or twice a year	52	18	14	17	18	119
	Once or twice a month	36	16	24	23	14	113
	Weekly or more than weekly	37	10	11	10	24	92
Total		182	52	71	67	68	440

One-way ANOVAs

Gender

		ANOVA				
		Sum of Squares	df	Mean Square	F	Sig.
BEHAVIORAL INTENTIONS Subscale	Between Groups	2.305	1	2.305	2.017	.156
	Within Groups	498.157	436	1.143		
	Total	500.462	437			
KNOWLEDGE Subscale	Between Groups	.246	1	.246	.248	.619
	Within Groups	432.267	436	.991		
	Total	432.513	437			
SKILLS Subscale	Between Groups	1.623	1	1.623	1.645	.200
	Within Groups	430.971	437	.986		
	Total	432.594	438			
DISPOSITIONS Subscale	Between Groups	2.076	1	2.076	2.002	.158
	Within Groups	451.055	435	1.037		
	Total	453.131	436			
OVERALL AVERAGE	Between Groups	1.325	1	1.325	1.405	.237
	Within Groups	408.437	433	.943		
	Total	409.763	434			

Note: None of the ANOVAs reached significance at $p \leq .05$.

Descriptives

		N	Mean
BEHAVIORAL INTENTIONS Subscale	Male	172	3.8527
	Female	266	4.0013
	Total	438	3.9429
KNOWLEDGE Subscale	Male	172	3.9561
	Female	266	4.0046
	Total	438	3.9855
SKILLS Subscale	Male	172	3.8052
	Female	267	3.9298
	Total	439	3.8810
DISPOSITIONS Subscale	Male	172	3.9948
	Female	265	4.1358
	Total	437	4.0803
OVERALL AVERAGE	Male	172	3.9184
	Female	263	4.0313
	Total	435	3.9867

Number of Service Learning Courses

ANOVA

		Sum of Squares	df	Mean Square	F	Sig.
BEHAVIORAL INTENTIONS Subscale	Between Groups	13.013	3	4.338	3.838	.010
	Within Groups	491.671	435	1.130		
	Total	504.684	438			
KNOWLEDGE Subscale	Between Groups	26.558	3	8.853	9.421	.000
	Within Groups	408.775	435	.940		
	Total	435.333	438			
SKILLS Subscale	Between Groups	15.515	3	5.172	5.362	.001
	Within Groups	420.564	436	.965		
	Total	436.079	439			
DISPOSITIONS Subscale	Between Groups	19.587	3	6.529	6.497	.000
	Within Groups	436.161	434	1.005		
	Total	455.748	437			
OVERALL AVERAGE	Between Groups	19.033	3	6.344	6.960	.000
	Within Groups	393.773	432	.912		
	Total	412.807	435			

Note: Highlighted values indicate significant ANOVA at $p \leq .05$, see table below for details.

Descriptives

		N	Mean
BEHAVIORAL INTENTIONS Subscale	0	140	3.7238
	1-2	201	3.9917
	3-4	65	4.2256
	5 or more	33	4.0808
	Total	439	3.9476
KNOWLEDGE Subscale	0	140	3.6333
	1-2	201	4.1294
	3-4	65	4.2291
	5 or more	33	4.1751
	Total	439	3.9894
SKILLS Subscale	0	140	3.6277
	1-2	202	3.9524
	3-4	65	4.0865
	5 or more	33	4.1705
	Total	440	3.8852
DISPOSITIONS Subscale	0	139	3.7763
	1-2	201	4.2050
	3-4	65	4.2754
	5 or more	33	4.2667
	Total	438	4.0840
OVERALL AVERAGE	0	139	3.6914
	1-2	199	4.0955
	3-4	65	4.2062
	5 or more	33	4.1949
	Total	436	3.9907

Current Number of Hours Enrolled

		ANOVA				
		Sum of Squares	df	Mean Square	F	Sig.
BEHAVIORAL INTENTIONS Subscale	Between Groups	.295	2	.148	.128	.880
	Within Groups	504.389	436	1.157		
	Total	504.684	438			
KNOWLEDGE Subscale	Between Groups	2.975	2	1.487	1.500	.224
	Within Groups	432.359	436	.992		
	Total	435.333	438			
SKILLS Subscale	Between Groups	1.412	2	.706	.710	.492
	Within Groups	434.667	437	.995		
	Total	436.079	439			
DISPOSITIONS Subscale	Between Groups	1.178	2	.589	.564	.569
	Within Groups	454.570	435	1.045		
	Total	455.748	437			
OVERALL AVERAGE	Between Groups	1.427	2	.714	.751	.472
	Within Groups	411.379	433	.950		
	Total	412.807	435			

Note: None of the ANOVAs reached significance at $p \leq .05$.

Descriptives

		N	Mean
BEHAVIORAL INTENTIONS Subscale	None	3	4.2222
	Less than 12	111	3.9670
	12+	325	3.9385
	Total	439	3.9476
KNOWLEDGE Subscale	None	3	4.2963
	Less than 12	111	3.8529
	12+	325	4.0332
	Total	439	3.9894
SKILLS Subscale	None	3	4.3333
	Less than 12	111	3.8086
	12+	326	3.9072
	Total	440	3.8852
DISPOSITIONS Subscale	None	3	4.3000
	Less than 12	111	3.9991
	12+	324	4.1111
	Total	438	4.0840
OVERALL AVERAGE	None	3	4.3000
	Less than 12	111	3.9012
	12+	322	4.0186
	Total	436	3.9907

Number of Hours Currently Working in a Week

		ANOVA				
		Sum of Squares	df	Mean Square	F	Sig.
BEHAVIORAL INTENTIONS Subscale	Between Groups	4.610	3	1.537	1.337	.262
	Within Groups	500.073	435	1.150		
	Total	504.684	438			
KNOWLEDGE Subscale	Between Groups	2.838	3	.946	.951	.416
	Within Groups	432.496	435	.994		
	Total	435.333	438			
SKILLS Subscale	Between Groups	1.866	3	.622	.624	.599
	Within Groups	434.213	436	.996		
	Total	436.079	439			
DISPOSITIONS Subscale	Between Groups	4.204	3	1.401	1.347	.259
	Within Groups	451.544	434	1.040		
	Total	455.748	437			
OVERALL AVERAGE	Between Groups	2.624	3	.875	.921	.431
	Within Groups	410.183	432	.949		
	Total	412.807	435			

Note: None of the ANOVAs reached significance at $p \leq .05$.

Descriptives

		N	Mean
BEHAVIORAL INTENTIONS Subscale	0	105	3.7905
	Less than 20	138	4.0676
	21-40	137	3.9392
	40+	59	3.9661
	Total	439	3.9476
KNOWLEDGE Subscale	0	105	3.9386
	Less than 20	138	4.0451
	21-40	137	4.0454
	40+	59	3.8192
	Total	439	3.9894
SKILLS Subscale	0	105	3.8179
	Less than 20	138	3.9022
	21-40	138	3.9611
	40+	59	3.7881
	Total	440	3.8852
DISPOSITIONS Subscale	0	104	3.9769
	Less than 20	137	4.1591
	21-40	138	4.1580
	40+	59	3.9254
	Total	438	4.0840
OVERALL AVERAGE	0	104	3.9096
	Less than 20	137	4.0518
	21-40	136	4.0473
	40+	59	3.8610
	Total	436	3.9907

How Often Attend Religious Activities

		ANOVA				
		Sum of Squares	df	Mean Square	F	Sig.
BEHAVIORAL INTENTIONS Subscale	Between Groups	6.768	3	2.256	1.971	.118
	Within Groups	497.916	435	1.145		
	Total	504.684	438			
KNOWLEDGE Subscale	Between Groups	11.979	3	3.993	4.103	.007
	Within Groups	423.354	435	.973		
	Total	435.333	438			
SKILLS Subscale	Between Groups	6.211	3	2.070	2.100	.100
	Within Groups	429.868	436	.986		
	Total	436.079	439			
DISPOSITIONS Subscale	Between Groups	9.208	3	3.069	2.983	.031
	Within Groups	446.540	434	1.029		
	Total	455.748	437			
OVERALL AVERAGE	Between Groups	8.903	3	2.968	3.174	.024
	Within Groups	403.904	432	.935		
	Total	412.807	435			

Note: Highlighted values indicate significant ANOVA at $p \leq .05$, see table below for details.

Descriptives

		N	Mean
BEHAVIORAL INTENTIONS Subscale	Do not attend	116	3.7414
	Once or twice a year	118	4.0395
	Once or twice a month	113	4.0147
	Weekly or more than weekly	92	4.0072
	Total	439	3.9476
KNOWLEDGE Subscale	Do not attend	116	3.7241
	Once or twice a year	119	4.0803
	Once or twice a month	112	4.1468
	Weekly or more than weekly	92	4.0145
	Total	439	3.9894
SKILLS Subscale	Do not attend	116	3.6929
	Once or twice a year	119	3.9296
	Once or twice a month	113	4.0011
	Weekly or more than weekly	92	3.9280
	Total	440	3.8852
DISPOSITIONS Subscale	Do not attend	116	3.8457
	Once or twice a year	118	4.1407
	Once or twice a month	113	4.2053
	Weekly or more than weekly	91	4.1637
	Total	438	4.0840
OVERALL AVERAGE	Do not attend	116	3.7580
	Once or twice a year	117	4.0536
	Once or twice a month	112	4.1199
	Weekly or more than weekly	91	4.0473
	Total	436	3.9907

Marital Status

		ANOVA				
		Sum of Squares	df	Mean Square	F	Sig.
BEHAVIORAL INTENTIONS Subscale	Between Groups	2.275	1	2.275	1.975	.161
	Within Groups	502.329	436	1.152		
	Total	504.605	437			
KNOWLEDGE Subscale	Between Groups	.353	1	.353	.354	.552
	Within Groups	434.970	436	.998		
	Total	435.323	437			
SKILLS Subscale	Between Groups	3.922	1	3.922	3.966	.047
	Within Groups	432.100	437	.989		
	Total	436.021	438			
DISPOSITIONS Subscale	Between Groups	1.085	1	1.085	1.039	.309
	Within Groups	454.656	435	1.045		
	Total	455.741	436			
OVERALL AVERAGE	Between Groups	1.414	1	1.414	1.489	.223
	Within Groups	411.392	433	.950		
	Total	412.806	434			

Note: Highlighted values indicate significant ANOVA at $p \leq .05$, see table below for details.

Descriptives

		N	Mean
BEHAVIORAL INTENTIONS Subscale	Married	74	4.1081
	Not Married	364	3.9158
	Total	438	3.9482
KNOWLEDGE Subscale	Married	74	4.0526
	Not Married	364	3.9768
	Total	438	3.9896
SKILLS Subscale	Married	74	4.0946
	Not Married	365	3.8421
	Total	439	3.8847
DISPOSITIONS Subscale	Married	74	4.1946
	Not Married	363	4.0617
	Total	437	4.0842
OVERALL AVERAGE	Married	74	4.1167
	Not Married	361	3.9649
	Total	435	3.9907

APPENDIX

Civic Engagement Survey Items

Section I

Please identify your major field(s):

Current number of credit hours enrolled

Age

Gender

- Male
- Female

Number of hours currently working in a week

Marital Status

- Married
- Single
- Divorced
- Other

Number of children in family

Race (optional)

How often do you attend church, synagogue or religious activities

- Do not attend
- Once or twice a year
- Once or twice a month
- Weekly or more than weekly

Section II

Please indicate how often you have participated in the following as part of your student experiences at SMSU: 1= None/Never 2= Once each school year 3= Once or twice each semester 4= About once a month 5= Nearly every week

Volunteering with others from SMSU for one-time service activities such as: helping out with a Habitat for Humanity project, being part of a food drive, or contributing to the Coats for Kids event

- None/Never
- Once each school year
- Once or twice each semester
- About once a month
- Nearly every week

Volunteering for campus events such as Relay for Life or the annual Chili Feed Cook-off (to support the local food shelf)

Participation in a public debate, working on a political campaign, or assisting with voter registration

Community involvement through a campus organization or club

Community involvement as part of Federal Work Study

Service through another organization not connected with SMSU

Have you ever participated in community service as part of a scholarship?

- No
- Yes

If yes, please enter number of years:

Please estimate the number of courses that you have taken at SMSU that have included community involvement such as volunteer service, community-based learning experiences, one-time service projects, or other service activities:

- 0
- 1-2
- 3-4
- 5 or more courses

Which of the following First Year Experience events have you attended at SMSU?
(Please check all that apply.)

- Convocation Speaker(s)
- Dennis Donovan lecture- Public Achievement
- George McGovern lecture- Ending Hunger in Our Time
- Paul Loeb lecture - Soul of a Citizen
- First Year Experience follow-up events (eg. Photo exhibit, lecture, fund raiser, service activity, panel discussion)
- Winona LaDuke lecture- Sustainability
- Karl Schmidt lecture- Permaculture
- Craig Howe lecture - Sustainability
- Kent Kapplinger- Art Exhibit
- Barbara Liukkonen lecture – Water Resources

Section III

Please indicate whether you agree or disagree with the following statements. 1= Strongly Disagree 6= Strongly Agree

[CMG1] My experiences at SMSU have helped me learn a lot about opportunities to become involved in the community.

- 1-Strongly Disagree
- 2
- 3
- 4
- 5
- 6-Strongly Agree

[CMG2] As a result of my experiences at SMSU, other students who know me well would describe me as a person who can discuss controversial social issues with civility and respect.

[CMG3] My experiences at SMSU have prepared me to write a letter to the newspaper or community leaders about a community issue.

[CMG4] My SMSU education has given me the professional knowledge and skills that I need to help address community issues.

[CMG5] My experiences at SMSU have helped make me a good listener, even when peoples' opinions are different from mine.

[CMG6] Based on my experiences at SMSU, I would say that most other students know less about community organizations and volunteer opportunities than I do.

[CMG7] My experiences at SMSU have helped me realize that it is important for me to vote and be politically involved.

[CMG8] My education at SMSU has increased my confidence that I can contribute to improving life in my community.

[CMG9] Because of my SMSU education, I believe that my community is enriched by having some cultural or ethnic diversity.

[CMG10] My experiences at SMSU have helped me realize that when members of my group disagree on how to solve a problem, I like to try to build consensus.

[CMG11] My education at SMSU has made me aware of a number of community issues that need to be addressed.

[CMG12] My experiences at SMSU have increased my motivation to participate in advocacy or political action groups after I graduate.

[CMG13] Through my experiences at SMSU, I am very familiar with clubs and organizations that encourage and support community involvement for college students.

[CMG14] My SMSU experiences helped me realize that I like to be involved in addressing community issues.

[CMG15] Because of the experiences at SMSU, I believe that having an impact on community problems is within my reach.

[CMG16] Because of my SMSU experiences, I plan to stay current with the local and national news after I graduate.

[CMG17] My experiences at SMSU have enabled me to plan or help implement an initiative that improves the community.

[CMG18] My experiences at SMSU have helped me realize that I prefer to work in settings in which I interact with people who are very different from me.

[CMG19] Because of the experiences I have had at SMSU, I feel a deep conviction in my career goals to achieve purposes beyond my own self-interest.

[CMG20] My experiences at SMSU have helped me develop my ability to respond to others with empathy, regardless of their backgrounds.

[CMG21] Because of my experiences at SMSU, I intend to be involved in volunteer service after I graduate.

[CMG22] My education at SMSU has motivated me to stay up to date on the current political issues in the community.

[CMG23] My SMSU education has convinced me that social problems are not too complex for me to help solve.

[CMG24] I believe that I have a responsibility to use the knowledge that I have gained at SMSU to serve others.

[CMG25] My SMSU education has prepared me to listen to others and understand their perspective on controversial issues.

[CMG26] Based on my experiences at SMSU, I would say that the main purposes of work are to improve society through my career.

[CMG27] As a result of my experiences at SMSU, I want to dedicate my career to improving society.

[CMG28] After being a student at SMSU, I feel confident that I will be able to apply what I have learned in my classes to solve real problems in society.

[CMG29] When discussing controversial social issues during my time at SMSU, I have often been able to persuade others to agree with my point of view.

[CMG30] My SMSU experiences have helped me develop a sense of who I am, which now includes a sincere desire to be of service to others.

Section IV

Please indicate whether you agree or disagree with the following statement by selecting the appropriate number. 1= Strongly Disagree 6= Strongly Agree

I have the responsibility and the commitment to use the knowledge and skills I have gained through my education to collaborate with others to improve society.

- 1-Strongly Disagree
- 2
- 3
- 4
- 5
- 6-Strongly Agree

Please describe the ways in which you agree or disagree with this statement and provide a clear explanation of your opinions.

Are there any other comments you would like to make?